



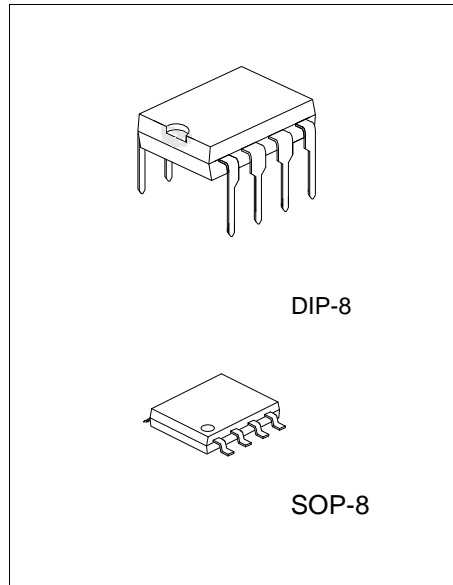
3563

CMOS IC

HIGH-EFFICIENCY DC/DC CONVERTER

DESCRIPTION

The UTC 3563 is a monolithic control circuit containing the primary functions required for DC to DC converters and high-side-sensed constant current source. The device consists of an internal temperature compensated reference, comparator, controlled duty cycle oscillator with an active current sense circuit, bootstrapped driver, and high current output switch. This device is specifically designed to construct a constant current source for battery chargers with a minimum number of external components. Bootstrapped driver can drive the NPN output switch to saturation for higher efficiency and less heat dissipation.



FEATURES

- * 3V to 30V input voltage operation.
- * Internal 2A peak current switch.
- * 1.5A continuous output current.
- * Bootstrapped driver.
- * High side current sense capability.
- * High efficiency (up to 90%)
- * Internal $\pm 2\%$ reference.
- * Low quiescent current at 1.6mA.
- * Frequency operation from 100Hz to 100KHz

ORDERING INFORMATION

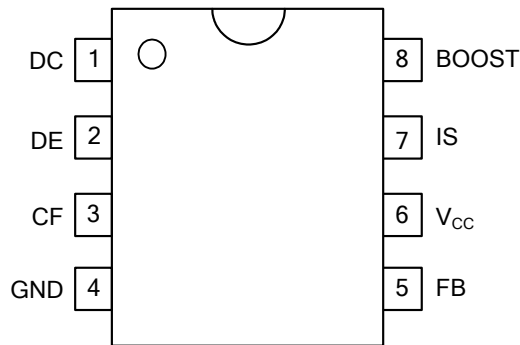
| Ordering Number | | Package | Packing |
|-----------------|--------------|---------|-----------|
| Lead Free | Halogen Free | | |
| 3563L-D08-T | 3563G-D08-T | DIP-8 | Tube |
| 3563L-S08-R | 3563G-S08-R | SOP-8 | Tape Reel |

| | |
|--|---|
| <p>3563G-D08-T</p> <p>(1)Packing Type (2)Package Type (3)Green Package</p> | <p>(1) T: Tube, R: Tape Reel (2) D08: DIP-8, S08: SOP-8 (3) G: Halogen Free and Lead Free, L: Lead Free</p> |
|--|---|

MARKING

| DIP-8 | SOP-8 |
|---|---|
| <p> 8 7 6 5 → Date Code UTC □ □ □ □ 3563 □ L: Lead Free G: Halogen Free □ □ □ □ → Lot Code 1 2 3 4 </p> | <p> 8 7 6 5 → Date Code UTC □ □ □ □ 3563 □ L: Lead Free G: Halogen Free □ □ □ □ → Lot Code 1 2 3 4 </p> |

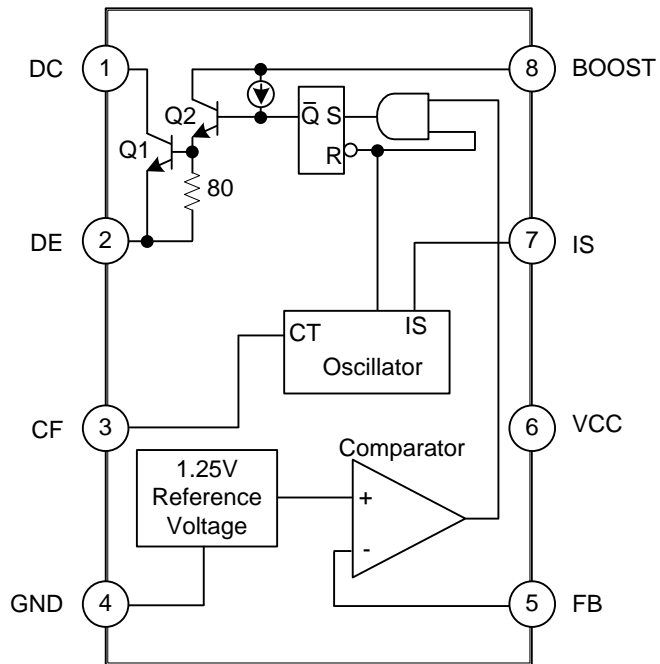
PIN CONFIGURATION



PIN DESCRIPTION

| PIN | SYMBOL | DESCRIPTION |
|-----|-----------------|--|
| 1 | DC | 2A switch collector |
| 2 | DE | Darlington switch emitter |
| 3 | CF | Oscillator timing capacitor |
| 4 | GND | Power ground |
| 5 | FB | Feedback comparator inverting input |
| 6 | V _{CC} | Power supply input |
| 7 | IS | Highside current sense input (V _{CC} -V _{IS} =300mV) |
| 8 | BOOST | Bootstrapped driver collector |

■ BLOCK DIAGRAM



■ ABSOLUTE MAXIMUM RATINGS (T_A=25°C, unless otherwise specified)

| PARAMETER | | SYMBOL | RATINGS | UNIT |
|-------------------------------------|-------|-------------------------|------------|------|
| Supply Voltage | | V _{CC} | 30 | V |
| Comparator input voltage range | | V _I | -0.3 ~ +30 | V |
| Switch collector voltage | | V _{C(switch)} | 30 | V |
| Switch emitter Voltage | | V _{E(switch)} | 30 | V |
| Switch collector to emitter voltage | | V _{CE(switch)} | 30 | V |
| Driver collector Voltage | | V _{C(driver)} | 30 | V |
| Switch current | | I _{SW} | 2 | A |
| Power dissipation | DIP-8 | P _D | 1000 | mW |
| | SOP-8 | | 625 | mW |
| Operating junction temperature | | T _J | +125 | °C |
| Operating ambient temperature range | | T _A | -20 ~ +85 | °C |
| Storage temperature range | | T _{STG} | -65 ~ +150 | °C |

Note: Absolute maximum ratings are those values beyond which the device could be permanently damaged. Absolute maximum ratings are stress ratings only and functional device operation is not implied.

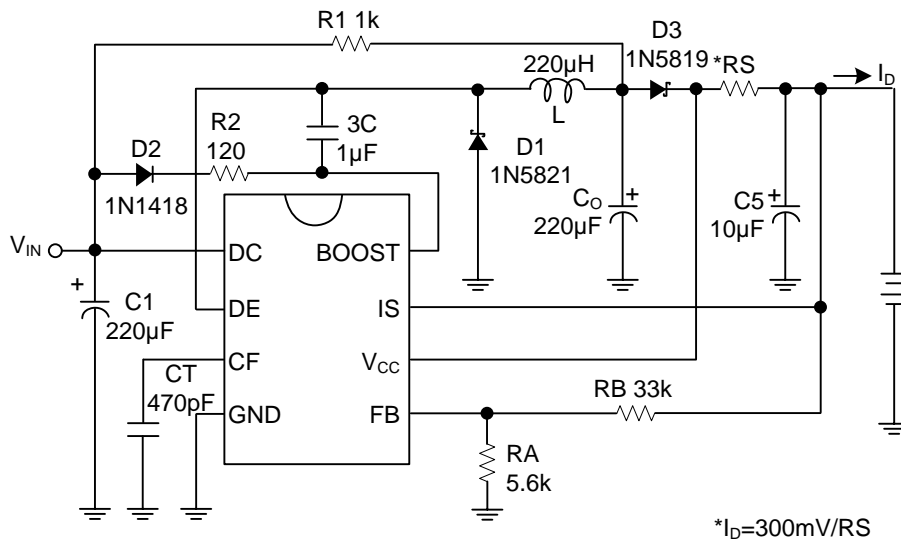
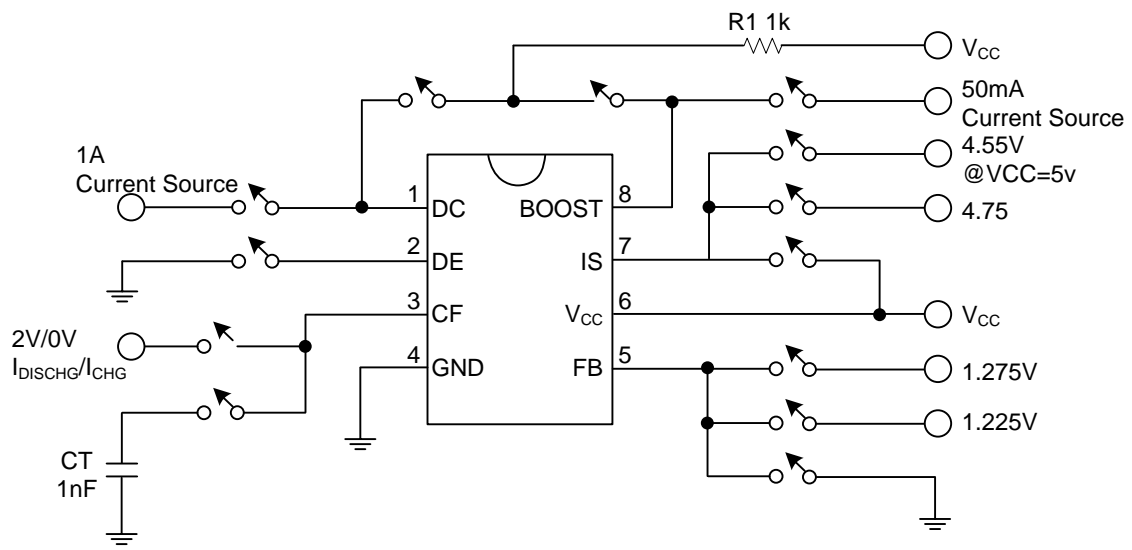
■ THERMAL RESISTANCES CHARACTERISTICS

| PARAMETER | SYMBOL | RATINGS | UNIT |
|---------------------|-----------------|---------|------|
| Junction to Ambient | θ _{JA} | 100 | °C/W |
| Junction to Case | θ _{JC} | 160 | °C/W |

■ ELECTRICAL CHARACTERISTICS (V_{CC}=5.0V, T_A=25°C, unless otherwise specified)

| PARAMETER | SYMBOL | TEST CONDITIONS | MIN | TYP | MAX | UNIT |
|---|--|--|-------|-------|-------|------|
| Oscillator | | | | | | |
| Charging Current | I _{CHG} | 5V ≤ V _{CC} ≤ 30V | 10 | 25 | 40 | μA |
| Discharging Current | I _{DISCHG} | 5V ≤ V _{CC} ≤ 30V | 100 | 150 | 200 | μA |
| Voltage Swing | V _{OSC} | PIN 3 | | 0.6 | | V |
| Discharge to Charge Current Ratio | I _{DISCHG} / I _{CHG} | V _{IS} =V _{CC} | | 6.0 | | |
| Current limit Sense Voltage | V _{CC-VIS} | I _{CHG} =I _{DISCHG} | 250 | 300 | 350 | mV |
| Output Switch | | | | | | |
| Saturation Voltage, Emitter Follower Connection | V _{CE(SAT)} | I _{DE} =1.0A, V _{BOOST} =V _{DC} =V _{CC} | | 1.5 | 1.8 | V |
| Saturation Voltage | V _{CE(SAT)} | I _{DC} =1.0A, I _{BOOST} =50mA, (Forced β≈20) | | 0.4 | 0.7 | V |
| DC Current Gain | h _{FE} | I _{SC} =1.0A, V _{CE} =5.0V | 35 | 120 | | |
| Collector Off State Current | I _{C(OFF)} | V _{CE} =30V | | 10 | | nA |
| Comparator | | | | | | |
| Threshold Voltage | V _{FB} | T _A =25°C | 1.225 | 1.250 | 1.275 | V |
| | | 0°C ≤ T _A ≤ 70°C | 1.210 | 1.250 | 1.290 | V |
| Threshold voltage Line Regulation | R _{EGLINE} | 3V ≤ V _{CC} ≤ 30V | | 0.1 | 0.3 | mV/V |
| Input Bias Current | I _{IB} | V _{IN} =0V | | 0.4 | 1.0 | μA |
| Supply Current | I _{CC} | V _{IS} =V _{CC} , PIN 5 > V _{FB} , 5.0V ≤ V _{CC} ≤ 30V, C _T =1nF, PIN 2=GND, Remaining pins open | | 1.6 | 3.0 | mA |

■ TEST CIRCUIT



■ APPLICATION INFORMATION

Tabel 1. DESIGN FORMULA TABLE

| CALCULATION | STEP-DOWN | STEP-UP |
|----------------------------|---|---|
| t_{ON} / t_{OFF} | $\frac{V_{OUT} + V_F}{V_{IN(MIN)} - V_{SAT} - V_{OUT}}$ | $\frac{V_{OUT} + V_F - V_{IN(MIN)}}{V_{IN(MIN)} - V_{SAT}}$ |
| $(t_{ON} + t_{OFF})_{MAX}$ | $1 / F_{MIN}$ | $1 / F_{MIN}$ |
| C_T | $4 \times 10^{-5} t_{ON}$ | $4 \times 10^{-5} t_{ON}$ |
| $I_{C(SWITCH)}$ | $2I_{OUT(MAX)}$ | $2I_{OUT(MAX)} \frac{t_{ON} + t_{OFF}}{t_{OFF}}$ |
| R_S | $0.3 / I_{C(SWITCH)}$ | $0.3 / I_{C(SWITCH)}$ |
| $L(MIN)$ | $\frac{V_{IN(MIN)} - V_{SAT} - V_{OUT}}{I_{C(SWITCH)}} t_{ON(MAX)}$ | $\frac{V_{IN(MIN)} - V_{SAT}}{I_{C(SWITCH)}} t_{ON(MAX)}$ |
| C_o | $\frac{I_{C(SWITCH)} (t_{ON} + t_{OFF})}{8V_{RIPPLE(P-P)}}$ | $\frac{I_{OUT} t_{ON}}{V_{RIPPLE(P-P)}}$ |

V_{SAT} : Saturation voltage of the output switch

V_F : Forward voltage of the ringback rectifier

The following power supply characteristics must be chosen:

V_{IN} : Norminal input voltage

V_{OUT} : Desired output voltage, $V_{OUT} = 1.25(1 + R_B/R_A)$

I_{OUT} : Desired output current

F_{MIN} : Minimum desired switching frequency at selected values for V_{IN} AND I_{OUT}

$V_{RIPPLE(P-P)}$: Desired peak-to-peak output ripple voltage. In practice, the calculated value will need to be increased due to the capacitor equivalent series resistance and board layout. The ripple voltage should be kept to a low value since it will directly affect the line and load regulation.

APPLICATION EXAMPLES

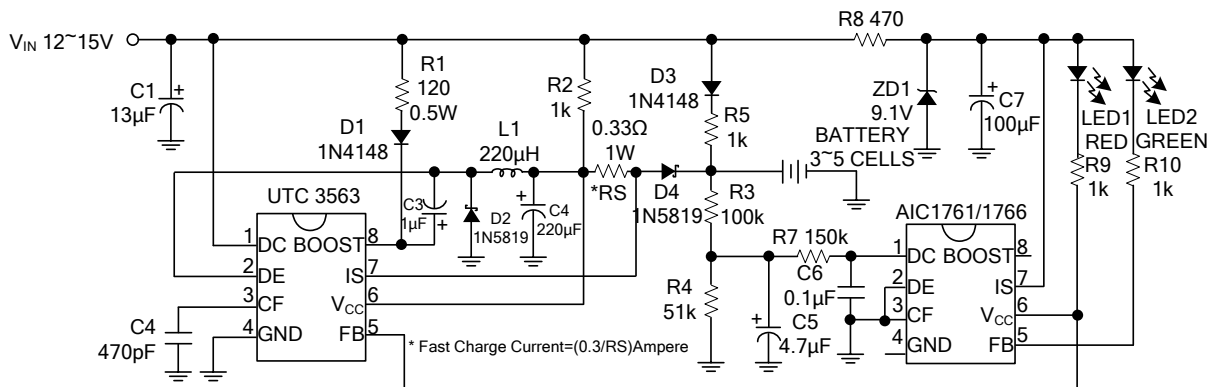
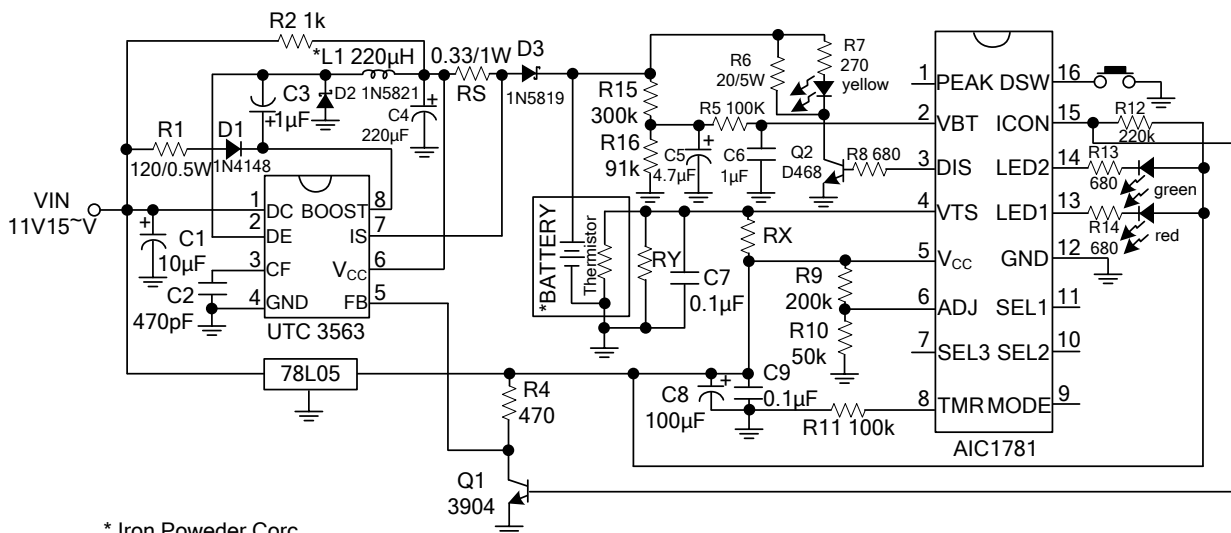


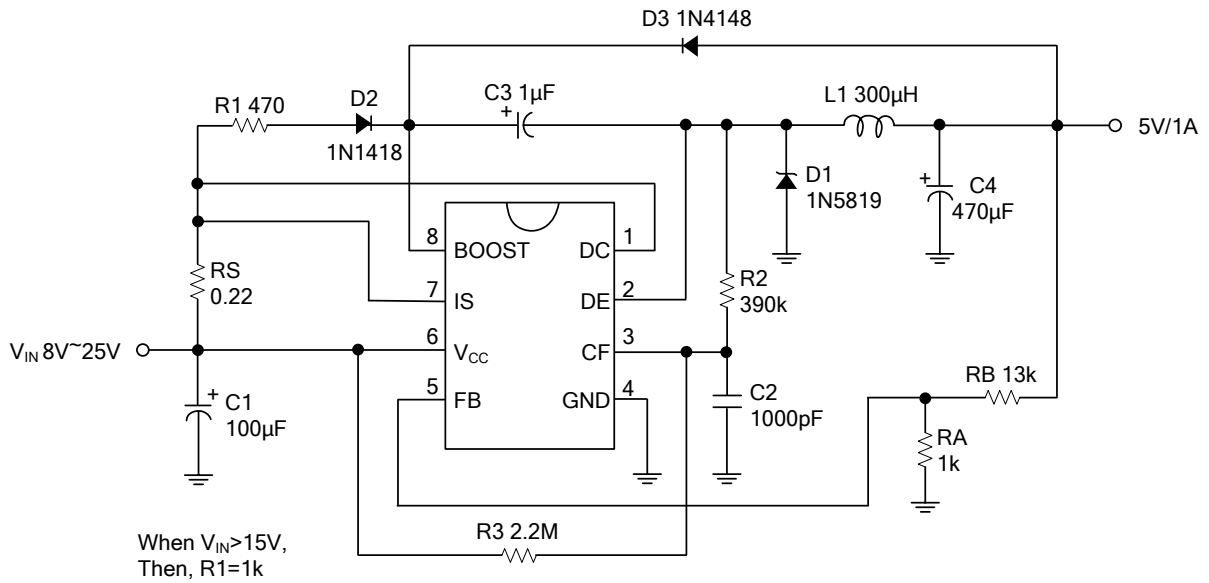
Fig. 1 Simplified Battery Charge Circuit for Ni-Cd/Ni-MH Battery



* Iron Powdered Corc
 ** 3~5 NiMH/NiCd Cells
 Note: Charge Current: 3.0V/RS Ampere
 Safety Timer=80 min.
 T/ t=10 /min.

Fig.2 Battery Charge Circuit for Fluctuating Charging Current Applications

■ APPLICATION EXAMPLES (Cont.)



Line regulation: 40mV ($V_{IN}=10V\sim 20V$, @ $I_O=1A$)
 Load regulation: 20mV ($V_{IN}=15V$, @ $I_O=100mA\sim 1A$)
 Short circuit current: 1.3A ($V_{IN}=15V$, @ $R_L=0.1\Omega$)

Fig. 3 Step-Down Converter

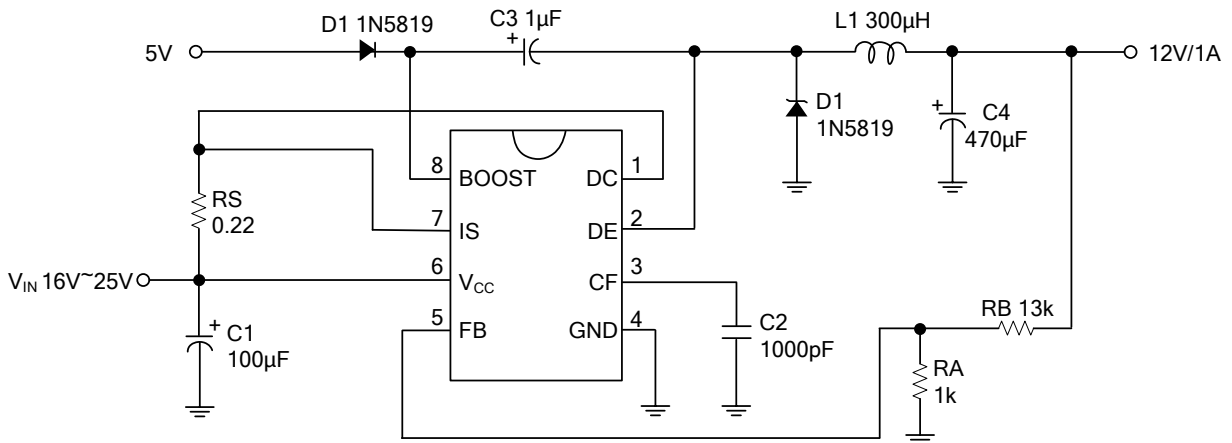
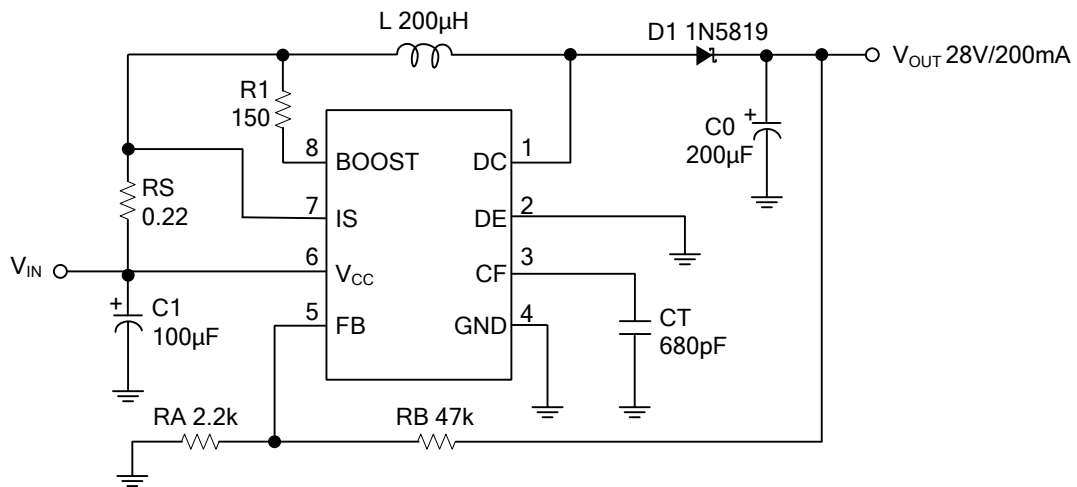


Fig. 4 Step-Down Converter with External 5V Bootstrap

■ APPLICATION EXAMPLES (Cont.)



Line regulation: 100mV ($V_{IN}=8V\sim 16V$, @ $I_O=200mA$)
 Load regulation: 40mV ($V_{IN}=12V$, @ $I_O=80mA\sim 200mA$)

Fig. 5 Step-Up Converter

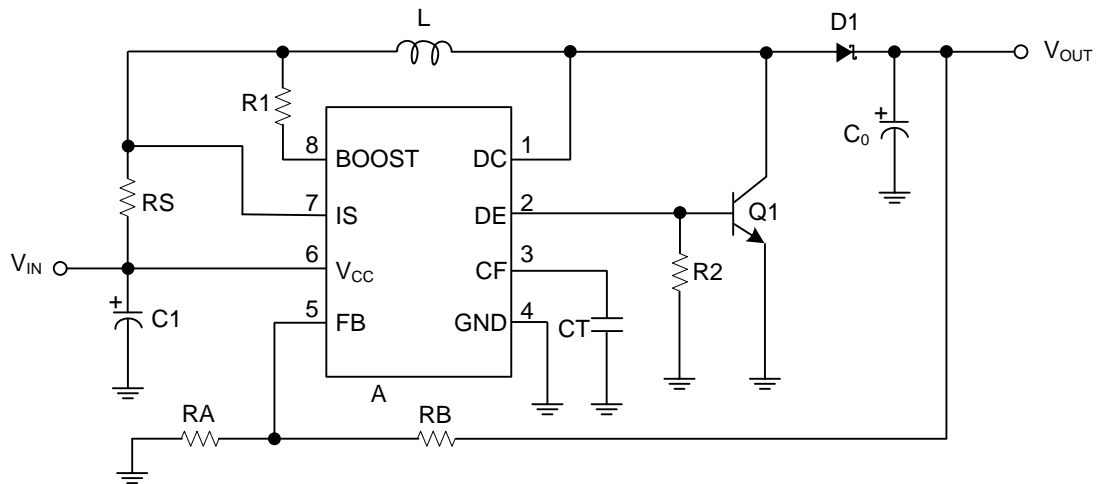
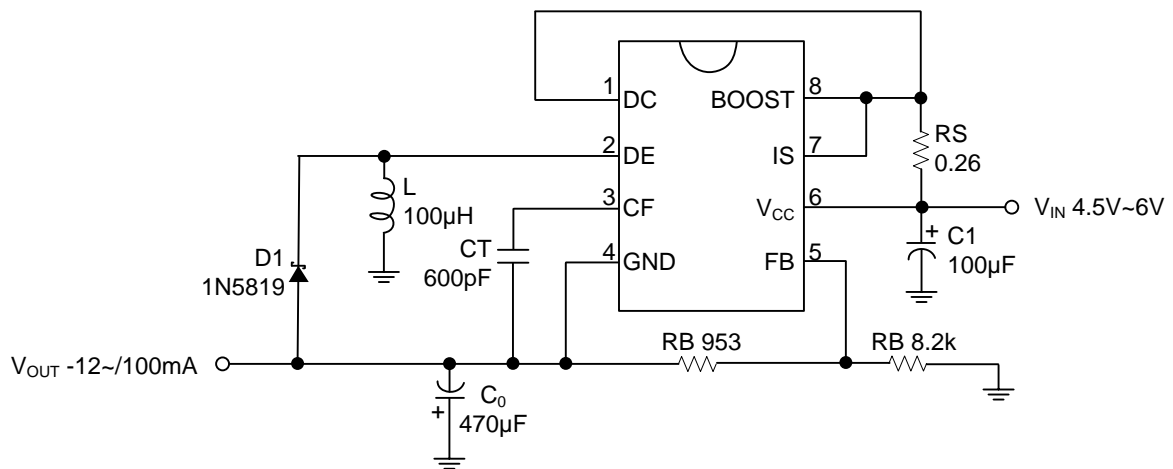


Fig. 6 Step-Up Converter with External NPN Switch

■ APPLICATION EXAMPLES (Cont.)

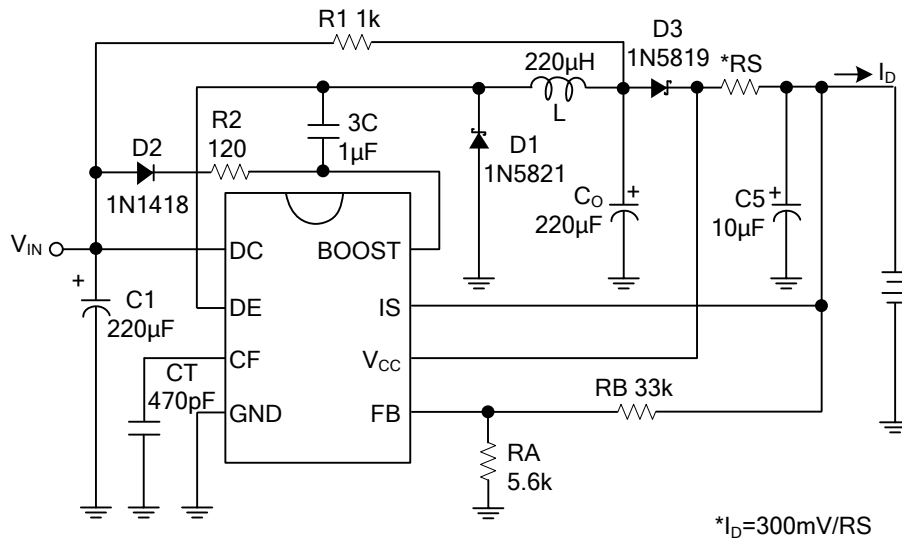


Line regulation: 20mV ($V_{IN}=4.5V\sim 6V$, @ $I_O=100mA$)

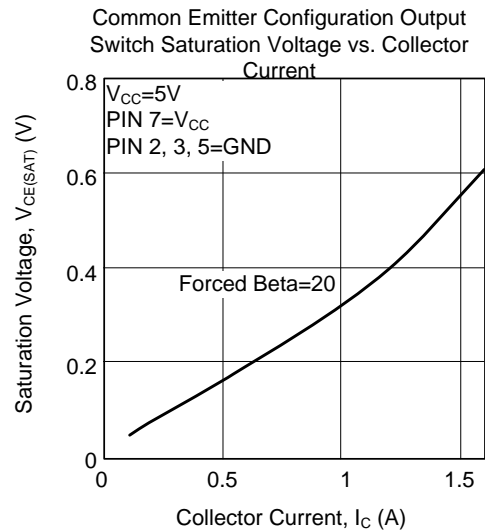
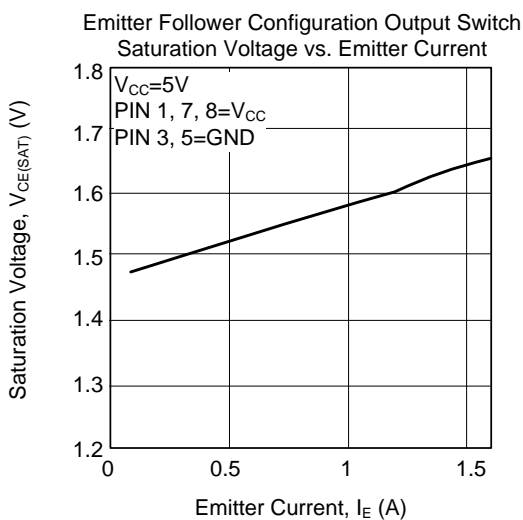
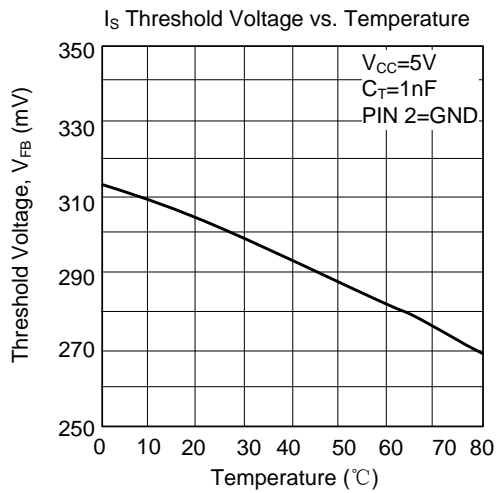
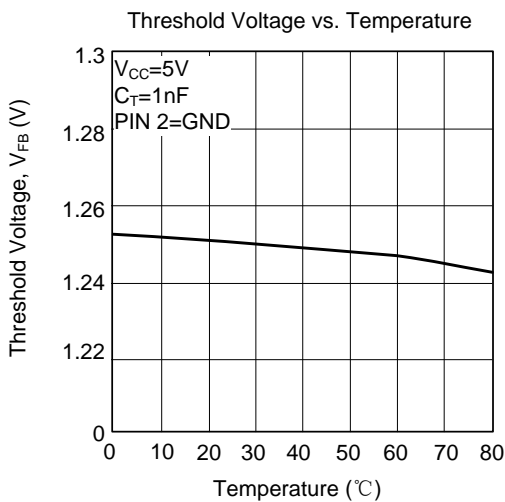
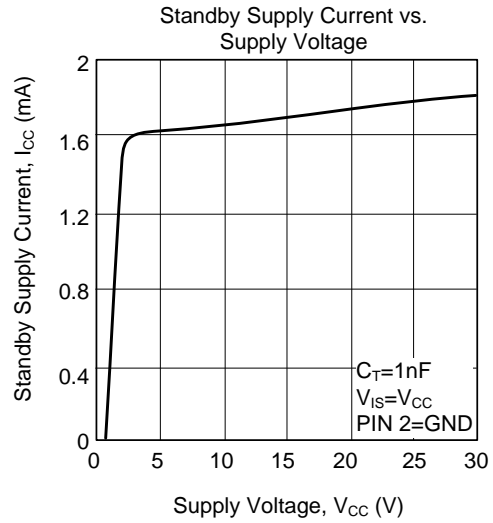
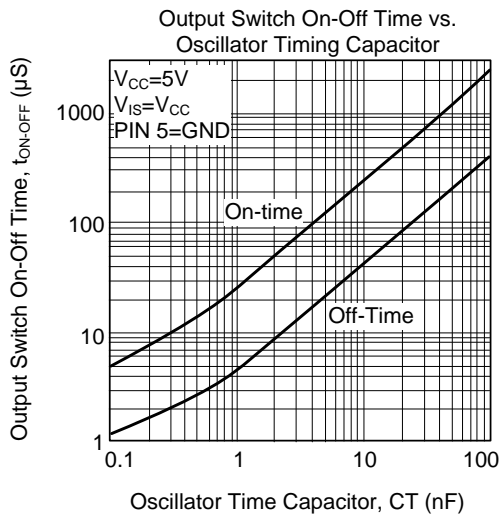
Load regulation: 100mV ($V_{IN}=5V$, @ $I_O=10mA\sim 100mA$)

Fig. 7 Inverting Converter

■ TYPICAL APPLICATION CIRCUIT



■ TYPICAL CHARACTERISTICS



UTC assumes no responsibility for equipment failures that result from using products at values that exceed, even momentarily, rated values (such as maximum ratings, operating condition ranges, or other parameters) listed in products specifications of any and all UTC products described or contained herein. UTC products are not designed for use in life support appliances, devices or systems where malfunction of these products can be reasonably expected to result in personal injury. Reproduction in whole or in part is prohibited without the prior written consent of the copyright owner. UTC reserves the right to make changes to information published in this document, including without limitation specifications and product descriptions, at any time and without notice. This document supersedes and replaces all information supplied prior to the publication hereof.