

### 3 WATT DUAL DC/DC CONVERTERS

#### Key Features

- Low Noise <50 mv
- Overload/Short Circuit Protection
- EN55022 Class A
- 2000 VDC Isolation
- SMD Technology

#### Applications

- Wireless Communications
- Cellular Base Stations
- Distributed Power Systems



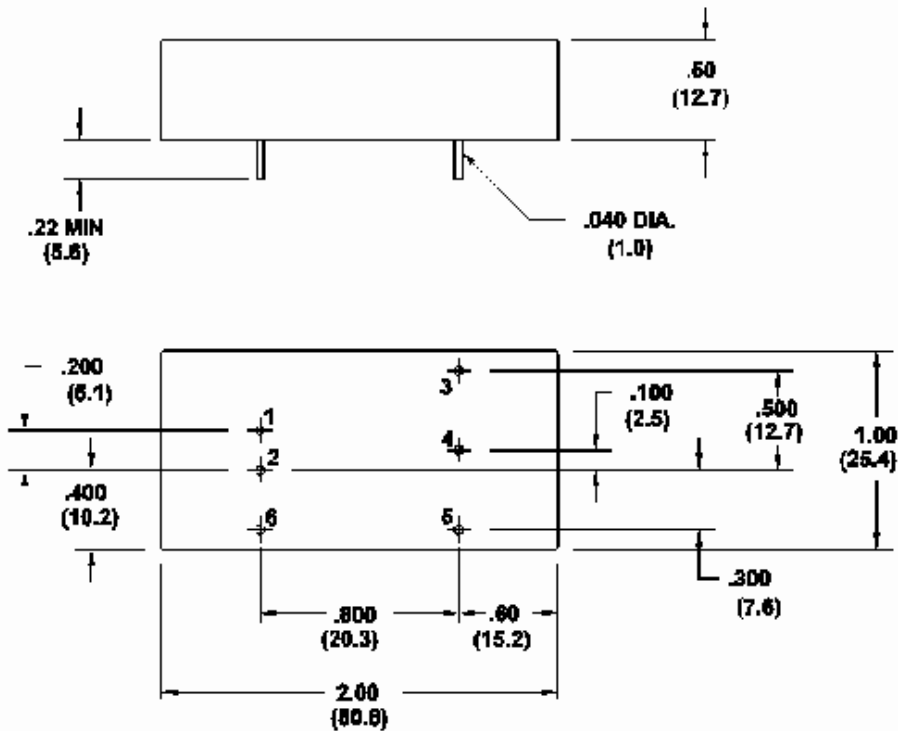
#### General Electrical Specifications

(Specifications at Nominal Input and 25 C, nominal input voltage and rated output current unless otherwise noted.)

Parameter	Limits	Conditions
Vin	36 to -110 VDC	80 VDC Nominal
V out/I out	+3.6VDC @600ma; +5.1 VDC @ 200 ma	
Efficiency	78% Typical	Nominal line, full load
I/O Isolation	2000 VDC	
Size	1" x 2" x 0.5"	
Operating Temperature	-40°C to +85°C	
Storage Temperature	-55° to +125°C	
Temperature Coefficient	±0.2% per °C	
Ripple/Noise	50 mV Pk-Pk max	20Mhz bandwidth
Output Accuracy	± 2%	Full Load, Nominal Line
Line Regulation	± 1%	Full Load
Load Regulation	+2, -1%	One output at Full Load; the other output at 10% - 100% of Full Load
Short Circuit Protection	Continuous, self recovering	
Overvoltage	4.3V, 6.2V	On 3.6V and 5.1V outputs, respectively
Remote On/Off	Low, <4V Unit is Off	TTL Compatible
Minimum Load Required	10% of Full Load	Each Output
EMI-RFI	EN55022 Class A	As measured in D.C. mains
Regulatory	Designed to meet UL 1950	
Case	Plastic	
Undervoltage Lockout	25-30 VDC	

#### Selection Guide

Device Type	Input Voltage Range VDC	Typical Input Current (A) @ Max Load	Output Voltage VDC	Max Output Current (A)
3A80R5-3.6SD	36-110	.0516	+ 3.6, +5.1	.600, .200

**MECHANICAL SPECIFICATIONS**


PIN	FUNCTION
1	+INPUT
2	-INPUT
3	+OUT1 (5.1V)
4	COMMON
5	+OUT2 (3.6V)
6	SHUTDOWN

**BOTTOM VIEW**

- All dimensions in parentheses are metric.
- Tolerances unless otherwise specified: .xx =  $\pm 0.3$  (.76)  
.xxx =  $\pm .015$  (.38)

Reliability Power Locations	
HEADQUARTERS & CUSTOMER SERVICE	SALES
Reliability Power, Incorporated 33 Musick Irvine, CA 92618 USA Tel: (949) 305-6700 Fax: (949) 305-6701 <a href="http://www.reliabilitypower.com">www.reliabilitypower.com</a>	Reliability Power, Incorporated Attention: SALES  Tel: (805) 449-1667 Fax: (805) 557-4530 <a href="mailto:sales@reliabilitypower.com">sales@reliabilitypower.com</a>