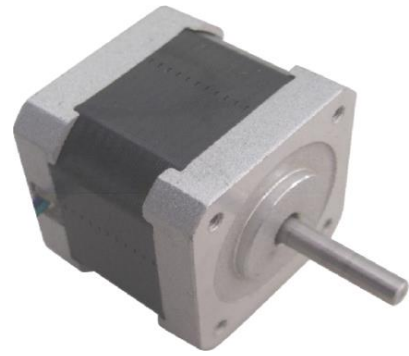


Hybrid Stepper Motor

42BYGH Series

General Specifications

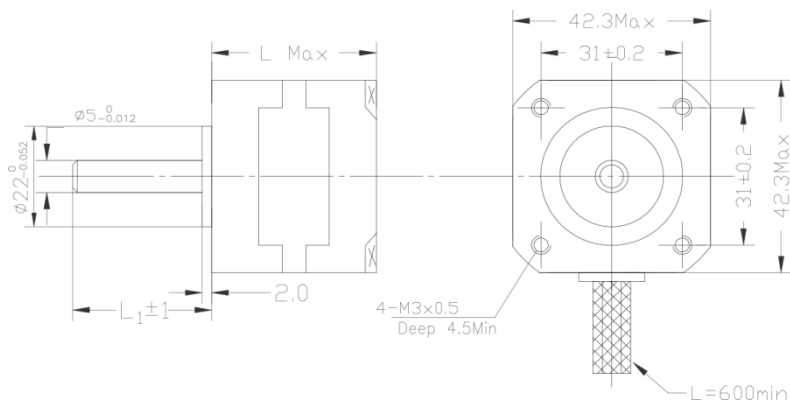
Step Accuracy	± 5%
Temperature Rise	80°C Max
Ambient Temperature Range	-20°C ~ +50°C
Insulation Resistance	100 MΩ Min. 500 VDC
Dielectric Strength	500 VAC 1 minute
Customized solutions on request.	



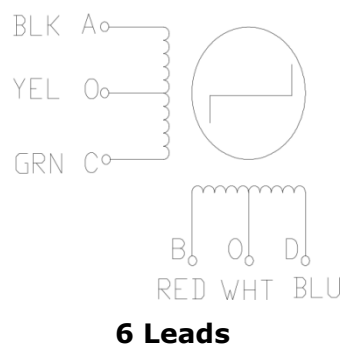
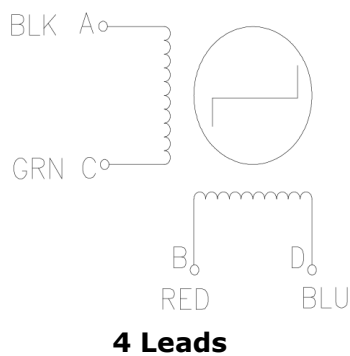
Electrical Specifications

Model	Step angle	Motor Length	Rate Voltage	Rate Current	Phase Resistance	Phase Inductance	Holding Torque	Detent Torque	Rotor Inertia	Lead Wire	Motor Weight
	°	L (mm)	V	A	Ω	mH	mNm	mNm	gcm ²	NO.	kg
42BYGH201-07	1.8	34	12	0.16	75	42	95	19.6	34	5	0.2
42BYGH202-05	1.8	34	12	0.3	40	19	125	19.6	34	6	0.2
42BYGH610-07	1.8	40	6.5	1.2	5.47	11	520	21.6	54	4	0.24
42BYGH613-01	1.8	40	2.4	1.7	1.43	2.75	400	21.6	54	4	0.24
42BYGH616A	1.8	40	4.1	0.5	8.2	16	400	21.6	54	4	0.24
42BYGH718-09	1.8	44	8.9	0.5	17.8	22	330	24.5	50	6	0.3
42BYGH721	1.8	44	10.5	0.25	42	38.3	220	24.5	50	6	0.3
42BYGH801	1.8	48	12	0.4	30	22	380	27.5	68	6	0.34
42BYGH803-01	1.8	48	6.0	0.8	7.5	5.0	240	27.5	68	6	0.34

Mechanical Dimensions



Wiring Diagram



Hybrid Stepper Motor

Pulse-Torque Characteristics

