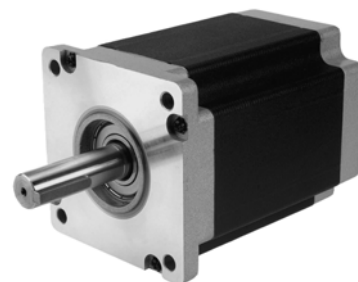


□ 109.86mm(□ 4.33in.)

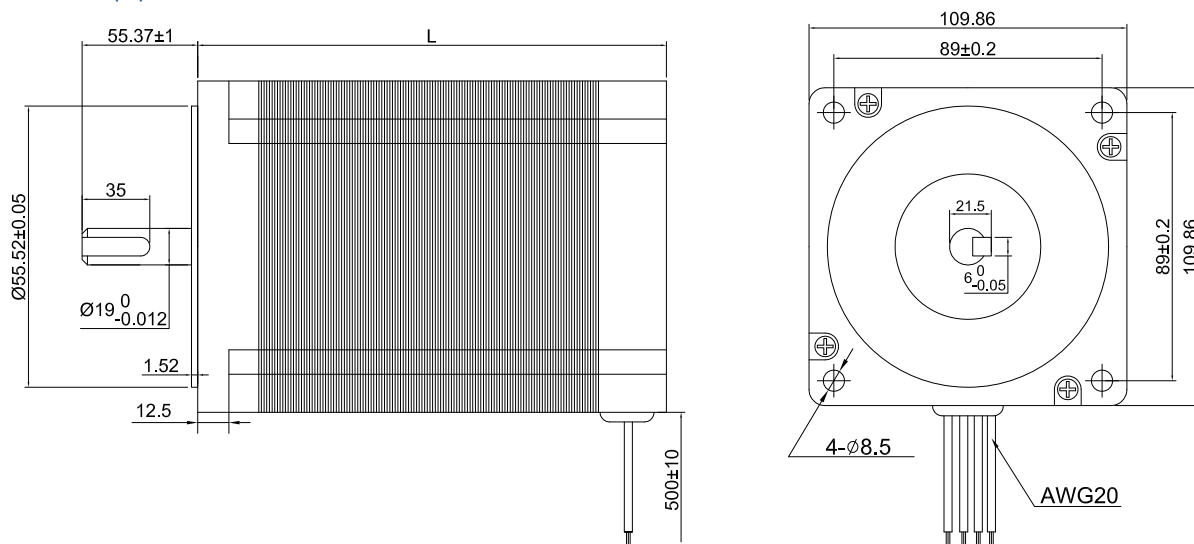
Step Angle 1.8° 42HS High-Torque Type

Common Rating

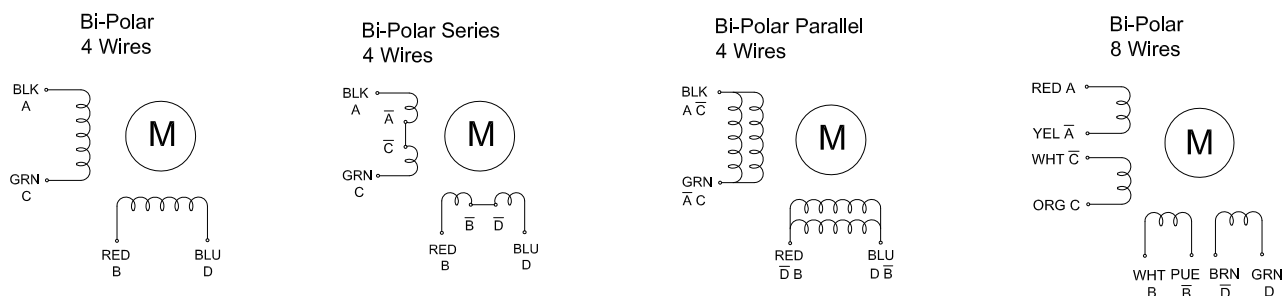
Item	Specification
Step Angle Accuracy	±5% (full step, no load)
Temperature Rise	80°C Max. (rated current, 2 phase on)
Ambient Temperature	-10°C~+50°C
Insulation Resistance	100MΩ Min. 500VDC
Dielectric Strength	500VAC for one minute



Dimension Unit = mm(in.)



Wiring Diagram



Specifications

Model	Torque		Voltage	Current	Resistance	Inductance	Inertia	Bi/Unipolar	Weight	Length "L"	
	N.m	lb.ft	V/Phase	A/Phase	Ohm/Phase	mH/Phase	kg.cm2	# of Leads	Kg	mm	in
42HS39-5504S	11.2	8.3	4.95	5.5	0.9	12	5.5	Bi (4)	5	99	3.90
42HS59-6804S	21	15.5	5.44	6.8	0.8	12	10.9	Bi (4)	8.4	150	5.91
42HS65-6004S	24	17.7	4.8	6	0.8	14	12.5	Bi (4)	9.5	165	6.50
42HS79-8004S	28	20.7	5.36	8	0.67	12	16.2	Bi (4)	11.7	201	7.91

* Specify -S for Single Shaft; -D for Double Shaft * All motor's specifications are based on full-step constant current operation