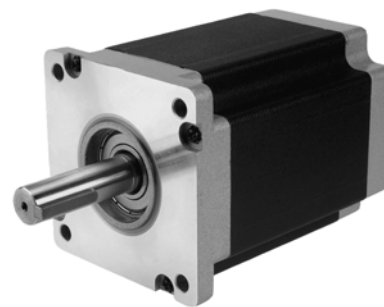


□ 109.86mm(□ 4.33in.)

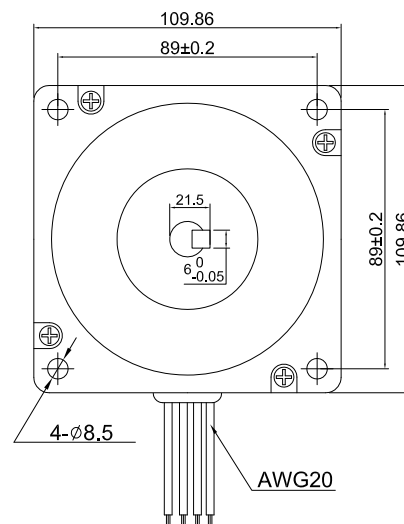
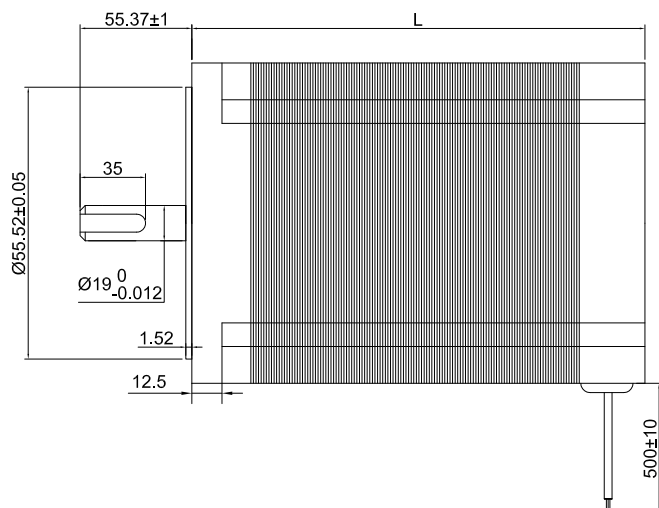
Step Angle 1.2° 42HT 3-Phase Type

Common Rating

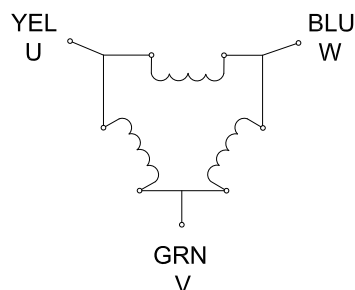
Item	Specification
Step Angle Accuracy	±5% (full step, no load)
Temperature Rise	80°C Max. (rated current, 2 phase on)
Ambient Temperature	-10°C ~ +50°C
Insulation Resistance	100MΩ Min. 500VDC
Dielectric Strength	500VAC for one minute



Dimension Unit = mm(in.)



Wiring Diagram



Excitation Sequence

STEP	1	2	3	4	5	6
U	+		-	-		+
V	-	-		+	+	
W		+	+		-	-

Specifications

Model	Torque		Voltage	Current	Resistance	Inductance	Inertia	Bi/Unipolar	Weight	Length "L"	
	N.m	lb.ft	V/Phase	A/Phase	Ohm/Phase	mH/Phase	kg.cm2	# of Leads	Kg	mm	in
42HT47-4303S	10	7.4	6	4.3	1.4	9.2	5.5	Bi (3)	5	120	4.72
42HT58-6003S	15	11.1	10.2	6	1.7	12	8.5	Bi (3)	7.4	148	5.83
42HT42-6403S	19	14.0	13.4	6.4	2.1	14.8	11.5	Bi (3)	9.8	182	7.17
42HT85-6903S	23	17.0	13.4	6.9	2.5	17.5	14.5	Bi (3)	11.7	216	8.50

* Specify -S for Single Shaft; -D for Double Shaft * All motor's specifications are based on full-step constant current operation