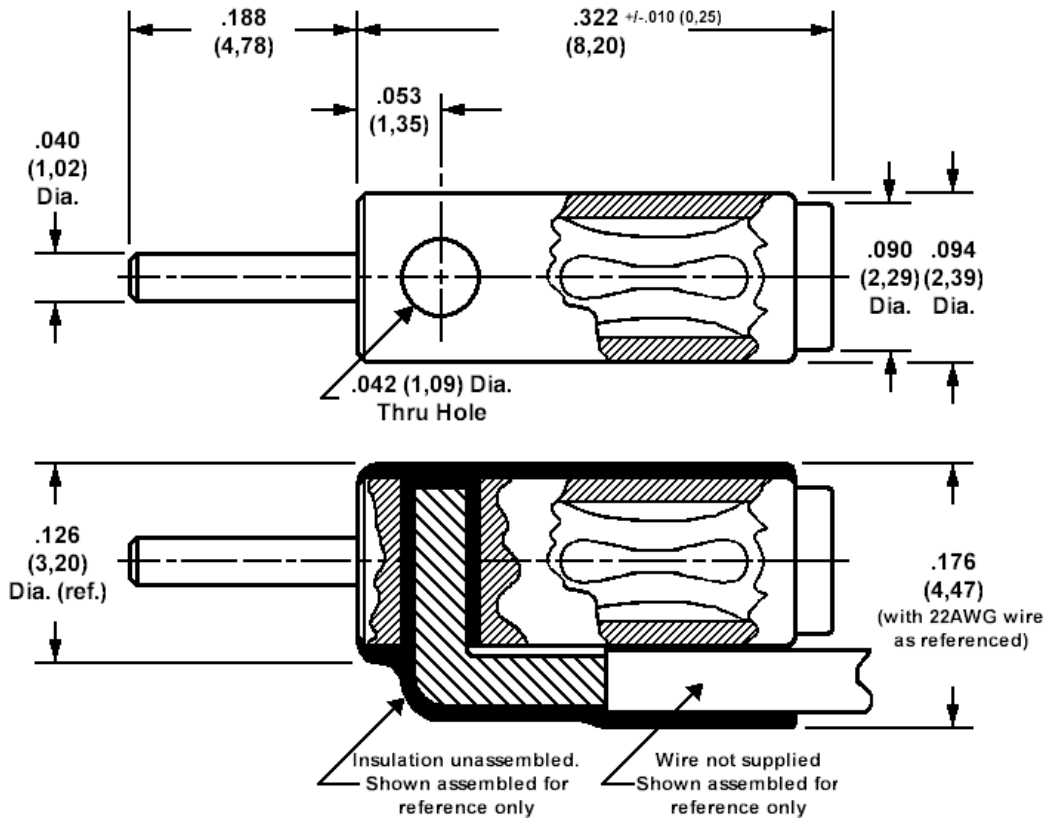


**450-3301 Socket for patch lead ends, stackable, .040 (1,02) pin and socket**  
 (supplied with loose heat shrink insulator)  
 (socket supplied without insulator, 450-3302)



Min hole depth .190 (4,83)

**How to order code**  
**450-3301-01-03-10**

Component	Material	Finish(-03)
Body	Brass	Gold over Nickel
Spring	Beryllium copper	Gold over Nickel
Insulator	Polyolefin plastic - black - supplied loose	

Recommended hook up wire size is 22 AWG (7 strands of 30AWG) copper wire PTFE insulated, .053 (1,37) over insulation. (not supplied)