

Features

- Low profile provides compatibility with DIPs
- Also available in medium profile (4600S - .250") and high profile (4600K - .350")
- Marking on contrasting background
- Custom circuits available per factory

4600T, S, K Series - Thin Film Conformal SIP

Product Characteristics

Resistance Range

Bussed49.9 to 100K ohms
 Isolated20 to 200K ohms
 Series.....20 to 100K ohms

Resistance Tolerance

.....±0.1%, ±0.5%, ±1%

Temperature Coefficient

.....±100ppm/°C, ±50ppm/°C,
 ±25ppm/°C

Temperature Range

.....-55°C to +125°C

Insulation Resistance

.....10,000 megohms minimum

TCR Tracking

.....±5ppm/°C

Environmental Characteristics

Thermal Shock and

Power Conditioning0.1%

Short Time Overload 0.1%

Terminal Strength 0.25%

Resistance to Soldering Heat 0.1%

Moisture Resistance 0.1%

Life 0.5%

Physical Characteristics

Body Material Flammability

.....Conforms to UL94V-0

Body Material.....Epoxy resin

HOW TO ORDER

46 11 T - 101 - 2222 F A B

Model _____
 (46 = Conformal SIP)

Number of Pins _____

Physical Config. _____

- T = Low Profile Thin Film
- S = Medium Profile Thin Film
- K = High Profile Thin Film

Electrical Configuration _____

- 101 = Bussed
- 102 = Isolated
- 106 = Series

Resistance Code _____

- First 3 digits are significant
- Fourth digit represents the number of zeros to follow.

Absolute Tolerance Code _____

- B = ±0.1%
- F = ±1%
- D = ±0.5%

Temperature Coefficient Code _____

- A = ±100ppm/°C
- C = ±25ppm/°C
- B = ±50ppm/°C

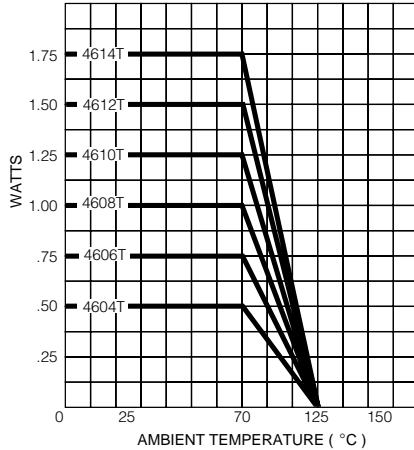
Ratio Tolerance (Optional) _____

- A = ±0.05% to R1
- D = ±0.5% to R1
- B = ±0.1% to R1

Consult factory for other available options.

Package Power Temp. Derating Curve

(Low Profile, 4600T)

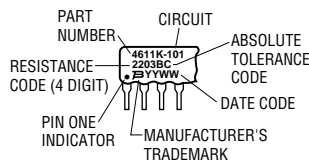


Package Power Ratings at 70°C

	T	S	K
4604	0.50	0.60	0.8 watts
4605	0.63	0.75	1.0 watts
4606	0.75	0.90	1.2 watts
4607	0.88	1.05	1.4 watts
4608	1.00	1.20	1.6 watts
4609	1.13	1.35	1.8 watts
4610	1.25	1.50	2.0 watts
4611	1.38	1.65	2.2 watts
4612	1.50	1.80	2.4 watts
4613	1.63	1.95	2.6 watts
4614	1.75	2.10	2.8 watts

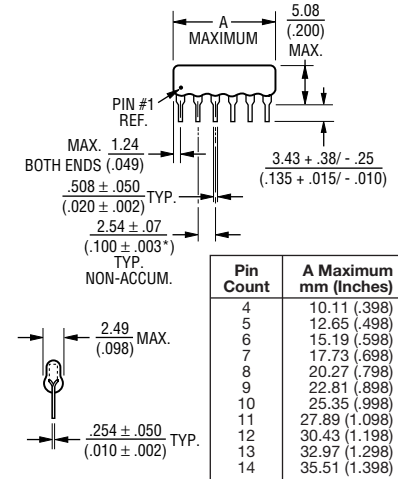
TYPICAL PART MARKING

Represents total content. Layout may vary.



Product Dimensions

4600T



Maximum package length is equal to 2.54mm (.100") times the number of pins, less .005mm (.002").

Governing dimensions are in metric. Dimensions in parentheses are inches and are approximate.

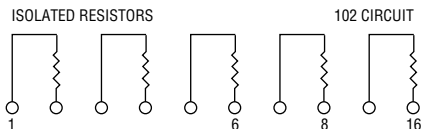
*Terminal centerline to centerline measurements made at point of emergence of the lead from the body.

4600T, S, K Series - Thin Film Conformal SIP



Isolated Resistors (102 Circuit)

Available in 4, 6, 8, 10, 12, 14, 16 Pin



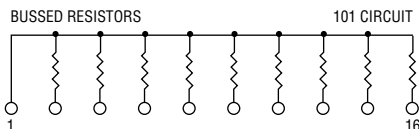
These models incorporate 2 to 8 isolated thin-film resistors of equal value, each connected between a separate pin.

Power Rating per Resistor

T	0.18 watt
S	0.20 watt
K	0.25 watt
Resistance Range...	20 to 200K ohms

Bussed Resistors (101 Circuit)

Available in 4 through 16 Pin



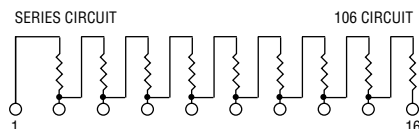
These models incorporate 3 to 15 thin-film resistors of equal value, each connected between a separate pin.

Power Rating per Resistor

T	0.10 watt
S	0.12 watt
K	0.15 watt
Resistance Range...	49.9 to 100K ohms

Series Circuit (106 Circuit)

Available in 4 through 16 Pin



These models incorporate 3 to 15 thin-film resistors of equal value, each connected in a series.

Power Rating per Resistor

T	0.10 watt
S	0.12 watt
K	0.15 watt
Resistance Range	20 to 100K ohms