

TUNG-SOL

PENTODE

MINIATURE TYPE

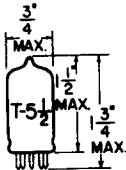
COATED UNIPOTENTIAL CATHODE

HEATER

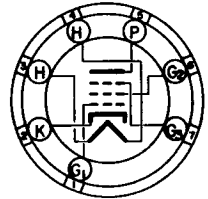
6.3 VOLTS 175 MA.

AC OR DC

ANY MOUNTING POSITION



GLASS BULB



BOTTOM VIEW
MINIATURE BUTTON
7 PIN BASE

THE 6AS6 IS A SHARP CUT-OFF VOLTAGE AMPLIFIER PENTODE USING THE MINIATURE CONSTRUCTION. IT IS CHARACTERIZED BY AN EFFICIENT HEATER, LOW CAPACITANCES AND HIGH TRANSCONDUCTANCE. THE SUPPRESSOR GRID IS TERMINATED IN A SEPARATE BASE CONNECTION AND IS INTENDED TO BE USED AS AN ADDITIONAL CONTROL GRID IN GATING, SWITCHING, OR MIXER SERVICE.

DIRECT INTERELECTRODE CAPACITANCES WITH EXTERNAL SHIELD CONNECTED TO CATHODE

GRID TO PLATE: (G_1 TO P)	0.01	$\mu\mu\text{f}$
INPUT: G_1 TO (H+K+ G_2 + G_3)	3.9	$\mu\mu\text{f}$
OUTPUT: P TO (H+K+ G_2 + G_3)	3.0	$\mu\mu\text{f}$
GRID #1 TO GRID #3: (G_1 TO G_3)	0.1	$\mu\mu\text{f}$

RATINGS

INTERPRETED ACCORDING TO RMA STANDARD MB-210

HEATER VOLTAGE	6.3	VOLTS
MAXIMUM HEATER-CATHODE VOLTAGE	90	VOLTS
MAXIMUM PLATE VOLTAGE	180	VOLTS
MAXIMUM GRID #2 VOLTAGE	140	VOLTS
MAXIMUM GRID #3 VOLTAGE	27	VOLTS
MAXIMUM PLATE DISSIPATION	1.7	WATTS
MAXIMUM GRID #2 DISSIPATION	0.75	WATT
MAXIMUM CATHODE CURRENT	18	MA.
MAXIMUM BULB TEMPERATURE	120	$^{\circ}\text{C}$

TYPICAL OPERATING CONDITIONS AND CHARACTERISTICS

CLASS A₁ AMPLIFIER

HEATER VOLTAGE	6.3	6.3	VOLTS
HEATER CURRENT	175	175	MA.
PLATE VOLTAGE	120	120	VOLTS
GRID #2 VOLTAGE	120	120	VOLTS
GRID #3 VOLTAGE	-3	0	VOLTS
GRID #1 VOLTAGE	-2	-2	VOLTS
TRANSCONDUCTANCE (CONTROL-GRID)	1 850	3 200	μMHOS
TRANSCONDUCTANCE (SUPPRESSOR-GRID)	810	470	μMHOS
PLATE CURRENT	3.6	5.2	MA.
GRID #2 CURRENT	4.8	3.5	MA.

CONTINUED ON FOLLOWING PAGE

TUNG-SOL

CONTINUED FROM PRECEDING PAGE

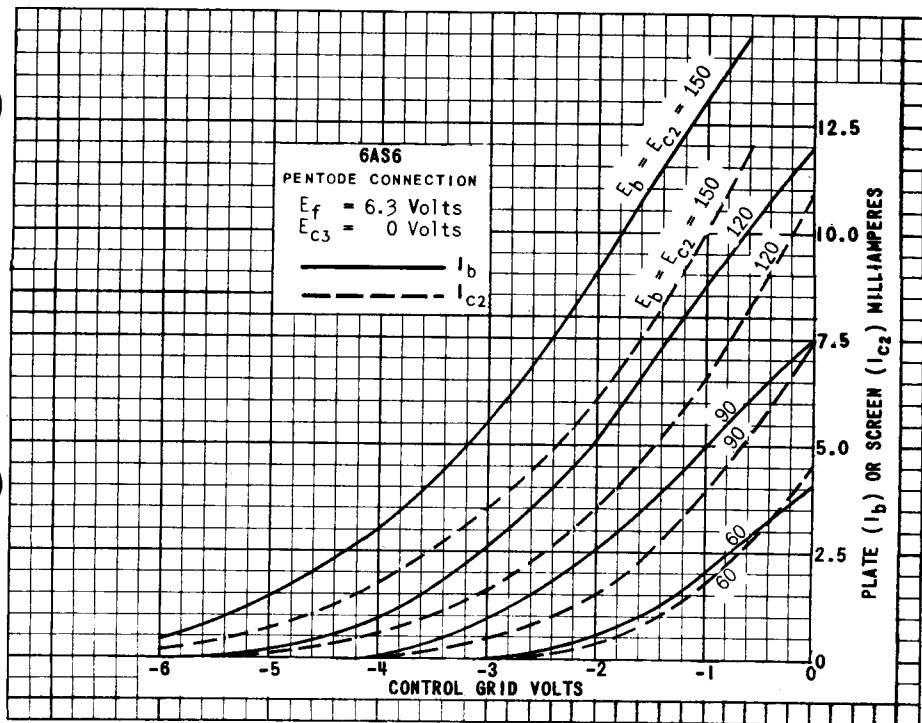
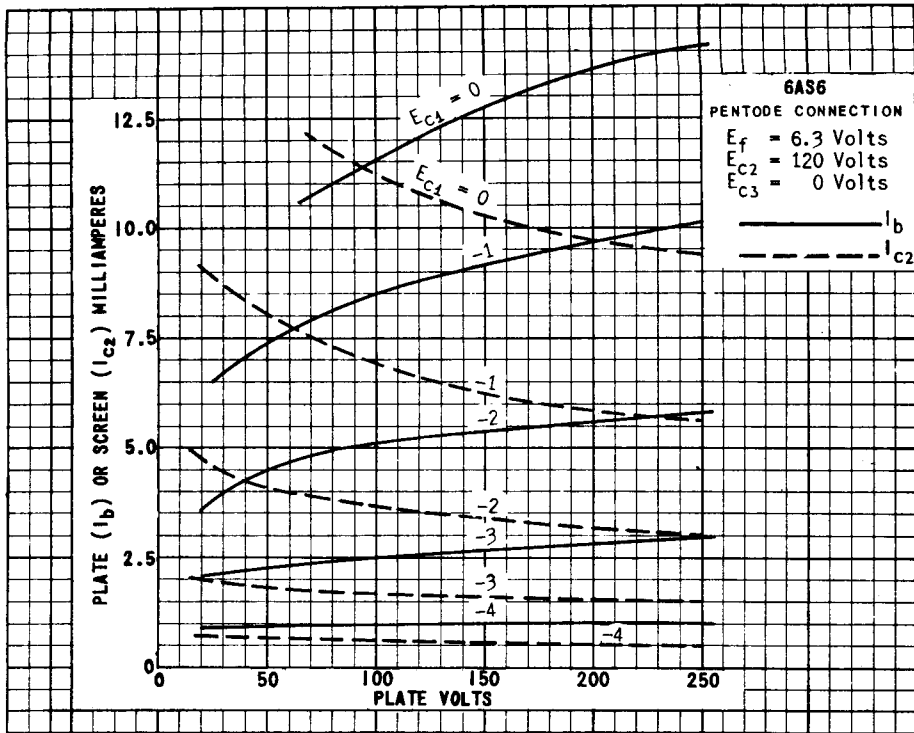
CONTROL-GRID PLATE CURRENT CUT-OFF CHARACTERISTICS

PLATE VOLTAGE	120	VOLTS
GRID #2 VOLTAGE	120	VOLTS
GRID #3 VOLTAGE	0	VOLTS
NOMINAL CUT-OFF - GRID #1	-6	VOLTS
GUARANTEED CUT-OFF - GRID #1	-10	VOLTS

SUPPRESSOR-GRID PLATE CURRENT CUT-OFF CHARACTERISTICS

PLATE VOLTAGE	120	120	VOLTS
GRID #2 VOLTAGE	120	60	VOLTS
GRID #1 VOLTAGE	-2	0	VOLTS
NOMINAL CUT-OFF - GRID #3	-10	-8	VOLTS
GUARANTEED CUT-OFF - GRID #3	-15	-10	VOLTS

PLATE
2020
JUNE 1,
1948



PRINTED IN U. S. A.

PLATE 2021
 JUNE 1, 1948

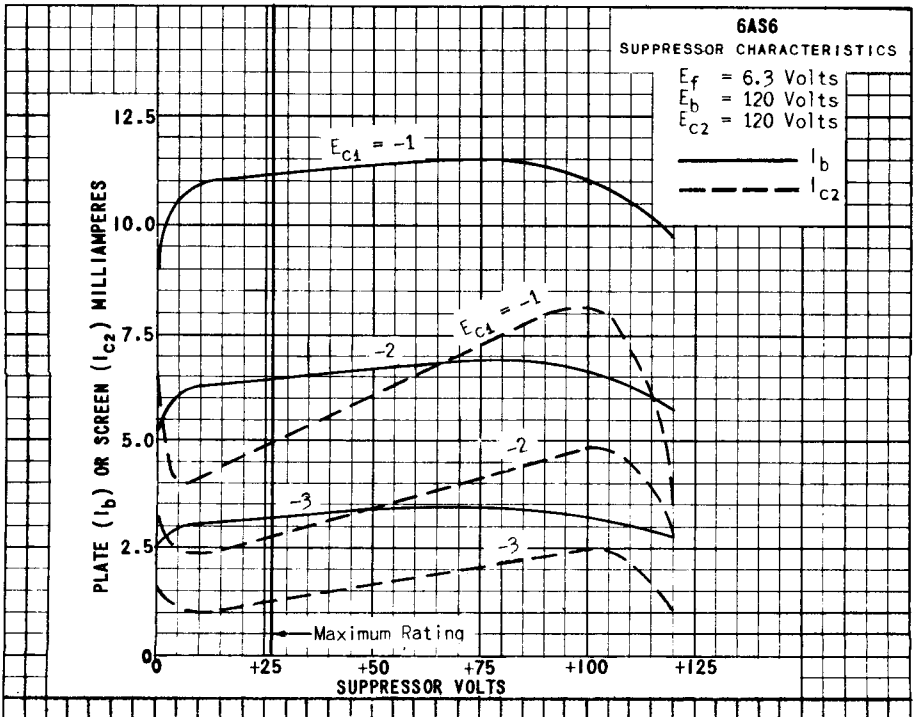
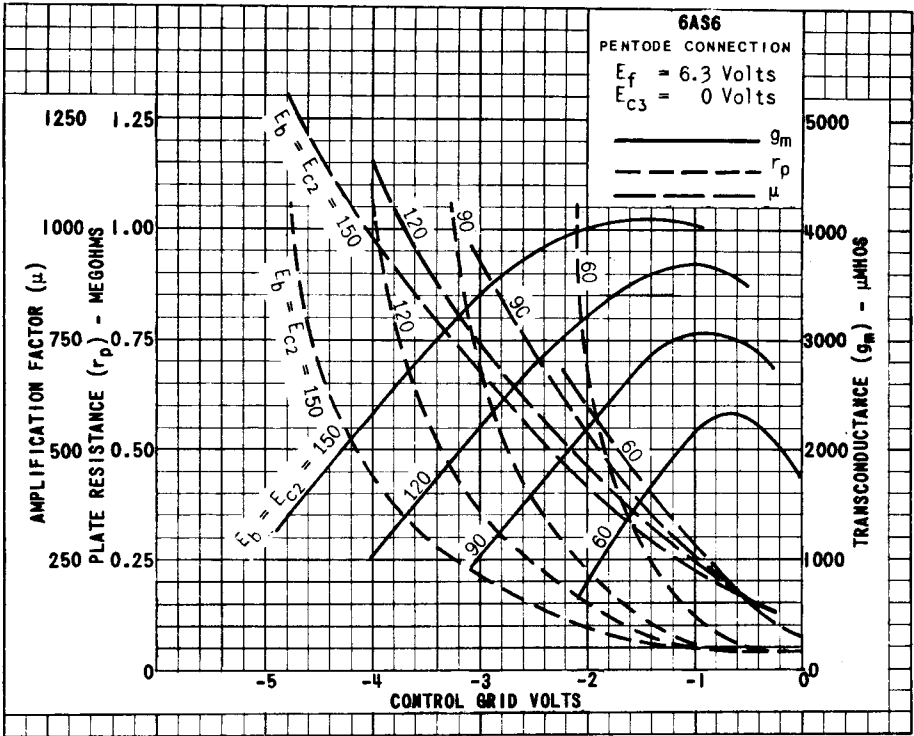


PLATE
2022
JUNE 1,
1948

