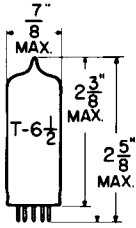


TUNG-SOL

TRIODE-PENTODE
MINIATURE TYPE



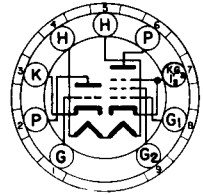
GLASS BULB
6-3

COATED UNIPOTENTIAL CATHODE

HEATER

6.3 VOLTS 0.72 AMP.

ANY MOUNTING POSITION



BOTTOM VIEW
MINIATURE BUTTON

9HX

THE 6DX8 IS A TRIODE-PENTODE IN THE 9 PIN MINIATURE CONSTRUCTION. THE TRIODE SECTION IS DESIGNED FOR USE IN CIRCUITS FOR KEYS A.G.C. SYNC-SEPARATION, SYNC-AMPLIFICATION AND NOISE SUPPRESSION; THE PENTODE SECTION IS DESIGNED FOR USE AS A VIDEO AMPLIFIER.

DIRECT INTERELECTRODE CAPACITANCES

	PENTODE SECTION	TRIODE SECTION	
GRID #1 TO ALL OTHER ELEMENTS EXCEPT PLATE	9.0	4.0	pf
PLATE TO ALL OTHER ELEMENTS EXCEPT GRID #1	4.5	2.3	pf
PLATE TO GRID #1 (MAX.)	0.1	2.7	pf
GRID #1 TO HEATER (MAX.)	0.1	0.1	pf

BETWEEN TRIODE AND PENTODE SECTION:

TRIODE PLATE TO PENTODE GRID #1 (MAX.)	0.01	pf
TRIODE GRID TO PENTODE GRID #1 (MAX.)	0.01	pf

RATINGS

INTERPRETED ACCORDING TO DESIGN CENTER SYSTEM

	PENTODE SECTION	TRIODE SECTION	
HEATER VOLTAGE		6.3	VOLTS
MAXIMUM PLATE VOLTAGE	300	300 ^A	VOLTS
MAXIMUM PEAK PULSE PLATE VOLTAGE AT PLATE CURRENT MAX. 0.1 MAMP ^B		600	VOLTS
MAXIMUM PLATE DISSIPATION	4	1	WATTS
MAXIMUM GRID #2 VOLTAGE	300		VOLTS
MAXIMUM GRID #2 DISSIPATION	1.7		WATTS
MAXIMUM CATHODE CURRENT	40	12	MA.
MAXIMUM GRID #1 CIRCUIT RESISTANCE WITH FIXED BIAS	1	1	MEG.
MAXIMUM GRID #1 CIRCUIT RESISTANCE WITH CATHODE RESISTOR	2	3	MEG.
MAXIMUM VOLTAGE BETWEEN HEATER & CATHODE	200	200	VOLTS
MAXIMUM CIRCUIT RESISTANCE BETWEEN HEATER & CATHODE	20,000	20,000	OHMS

CONTINUED ON FOLLOWING PAGE

PRINTED IN U.S.A.

TUNG-SOL

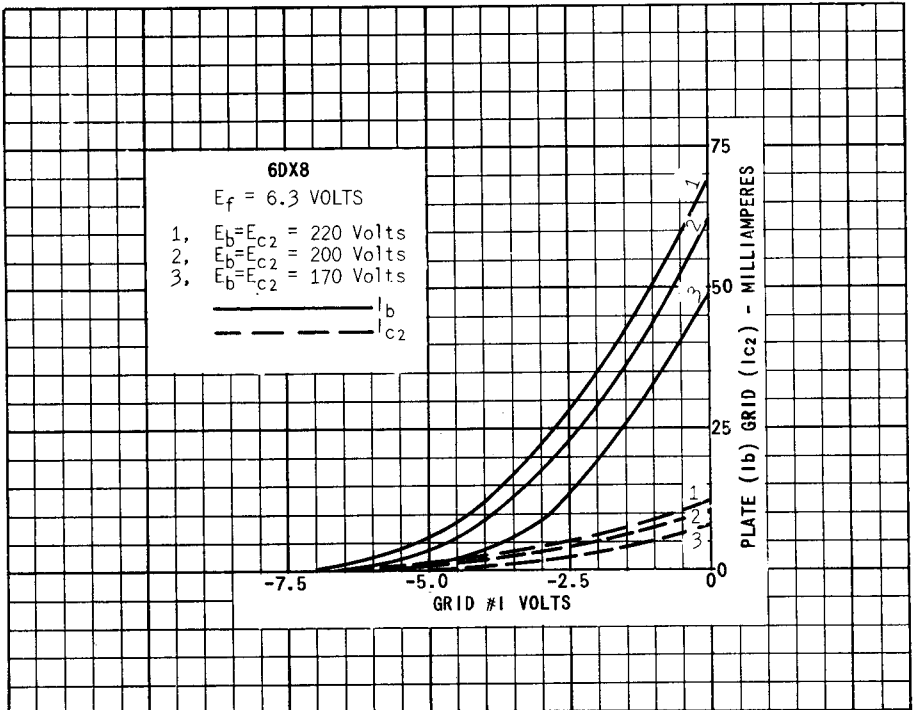
CONTINUED FROM PRECEDING PAGE

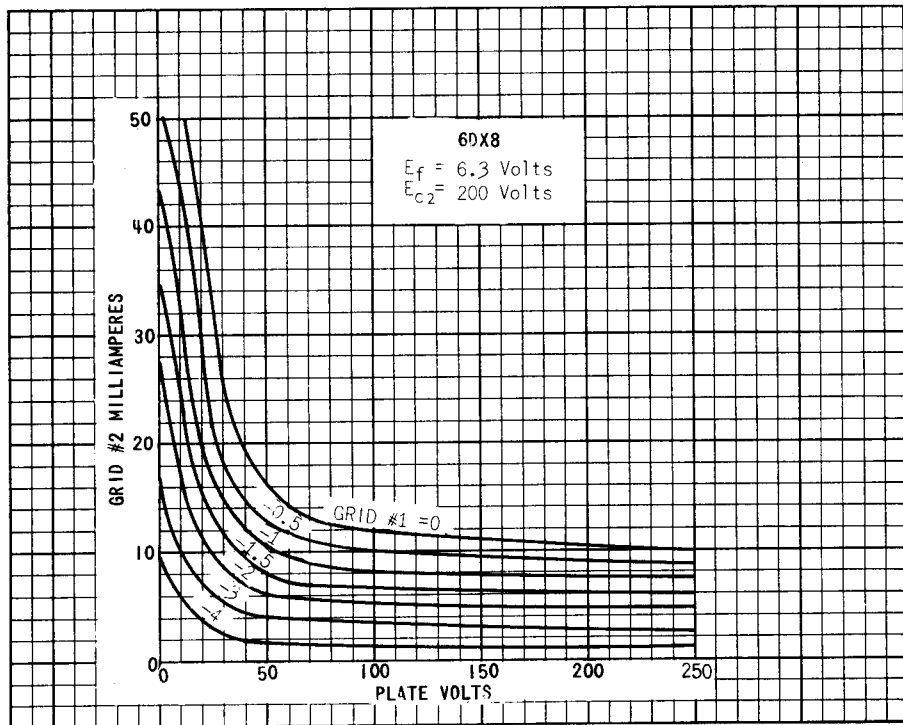
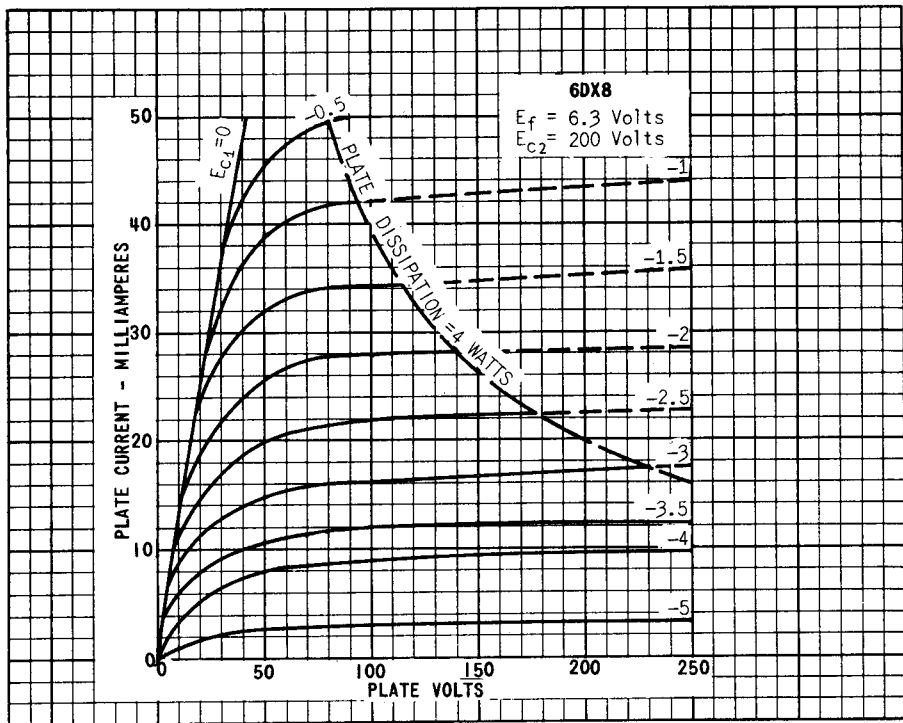
TYPICAL OPERATING CONDITIONS AND CHARACTERISTICS

	TRIODE SECTION		PENTODE SECTION		
	200	170	200	220	
PLATE VOLTAGE		170	200	220	VOLTS
GRID #2 VOLTAGE		170	200	220	VOLTS
GRID #1 BIAS	-1.7	-2.1	-2.9	-3.4	VOLTS
PLATE CURRENT	3	18	18	18	MAM
GRID #2 CURRENT		3	3	3	MA.
TRANSCONDUCTANCE	4000	11000	10400	10000	μMHOS
PLATE RESISTANCE		0.1	0.13	0.15	MEG.
AMPLIFICATION FACTOR OF GRID #2 WITH RESPECT TO GRID #1		36	36	36	
AMPLIFICATION FACTOR	65				

^A POSITIVE AND NEGATIVE.

^B MAX. PULSE DURATION 18% OF A CYCLE WITH A MAXIMUM OF 18 MICROSECONDS.





PRINTED IN U. S. A.

