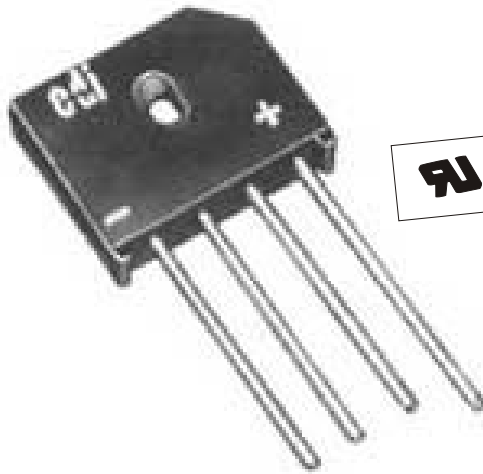




6PHR

**FAST RECOVERY  
SINGLE-PHASE FULL WAVE BRIDGE  
6 AMPERES  
FOR P.C. BOARD AND HEAT SINK MOUNTING  
200 NANOSECOND FAST RECOVERY**



This mark indicates recognition under the component program of Underwriters Laboratories, inc.

PRV/Leg	50V	100V	200V	400V	600V	800V	1000V
Type No.	6PHR05	6PHR10	6PHR20	6PHR40	6PHR60	6PHR80	6PHR100

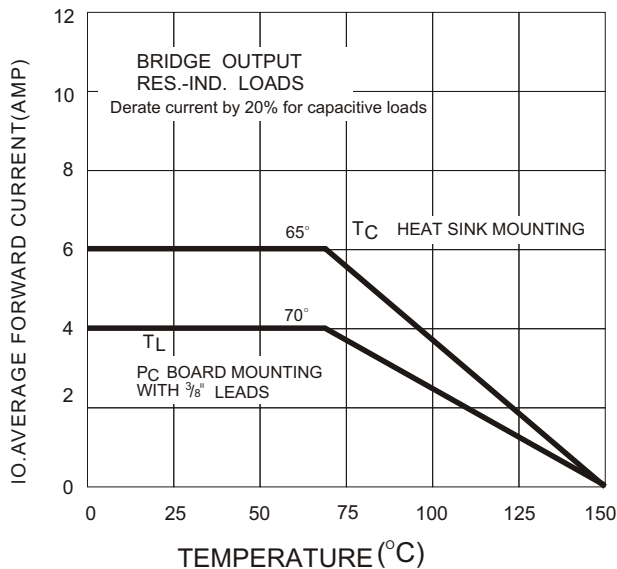
**ELECTRICAL CHARACTERISTICS PER LEG**  
(at  $T_A=25^\circ\text{C}$  Unless Otherwise Specified)

Average Output Current, $I_o$ @ $65^\circ\text{C}$ $T_c$ (Fig.1)	6	Amp
Max.Forward Voltage Drop, $V_F=1.2V$ @ $I_F =$	2.5	Amp
Max.DC Reverse Current @ PRV and $25^\circ\text{C}$ , $I_R$	10	$\mu\text{A}$
Max.DC Reverse Current @ PRV and $100^\circ\text{C}$ , $I_R$	300	$\mu\text{A}$
Max.Peak Surge Current, $I_{FSM}$ (8.3ms) (Fig.2)	240	Amp
Max. Reverse Recovery Time, $T_{rr}$ (Fig.3)	200	Nanosec
Ambient Operating Temperature Range, $T_A$	-55 to+150	$^\circ\text{C}$
Storage Temperature Range, $T_{STG}$	-55 to+150	$^\circ\text{C}$

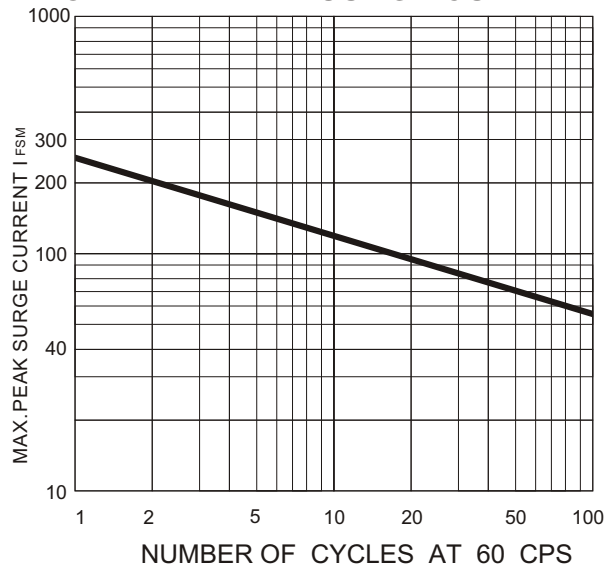
EDI reserves the right to change these specifications at any time without notice.

# 6PHR

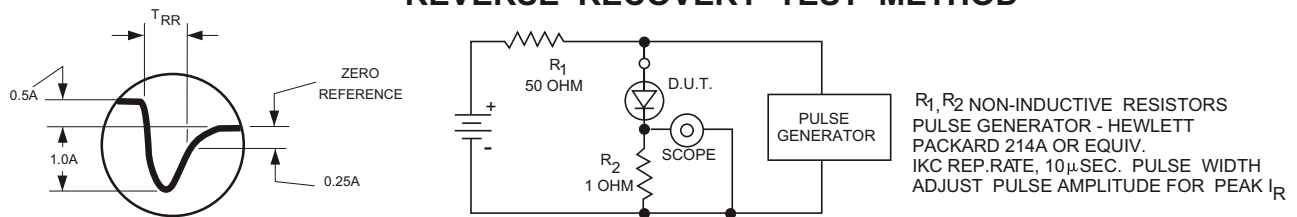
**FIG.1  
CURRENT DERATING**



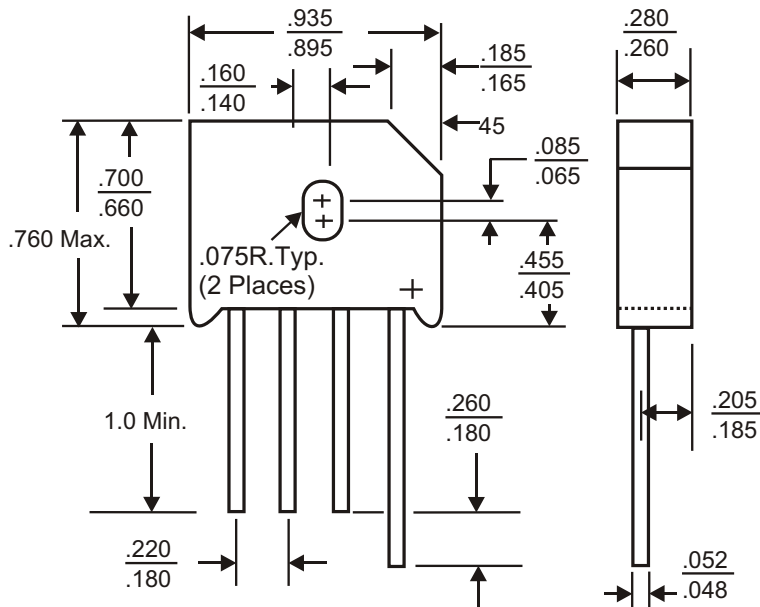
**FIG.2  
NON-REPETITIVE SURGE CURRENT**



**FIG.3  
REVERSE RECOVERY TEST METHOD**



## CASE STYLE FOR 6PHR



Dielectric test voltage 2,500 V rms., max. 50-60Hz

NOTE Maximum lead and terminal temperature for soldering, 3/8 inch from case 5 seconds at 250 °C

**ELECTRONIC DEVICES, INC.** DESIGNERS AND MANUFACTURERS OF SOLID STATE DEVICES SINCE 1951.

21 GRAY OAKS AVENUE \* YONKERS, NEW YORK 10710 914-965-4400 \* FAX 914-965-5531 \* 1-800-678-0828

e-mail:sales@edidiodes.com\* website: http://www.edidiodes.com