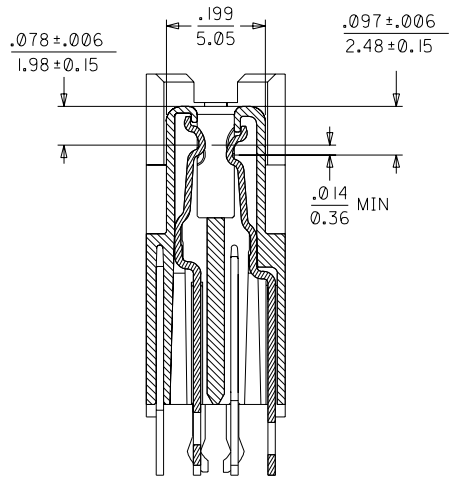
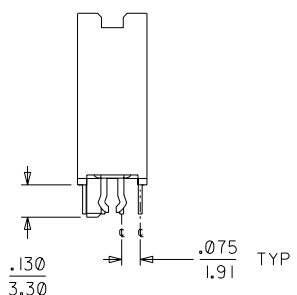
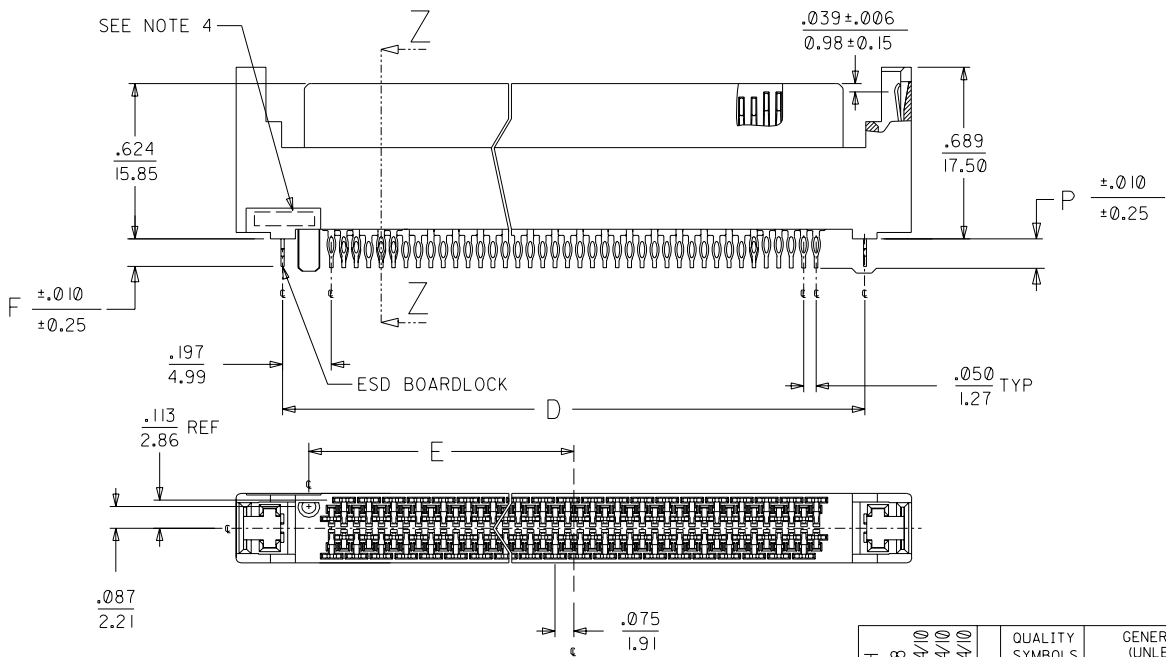
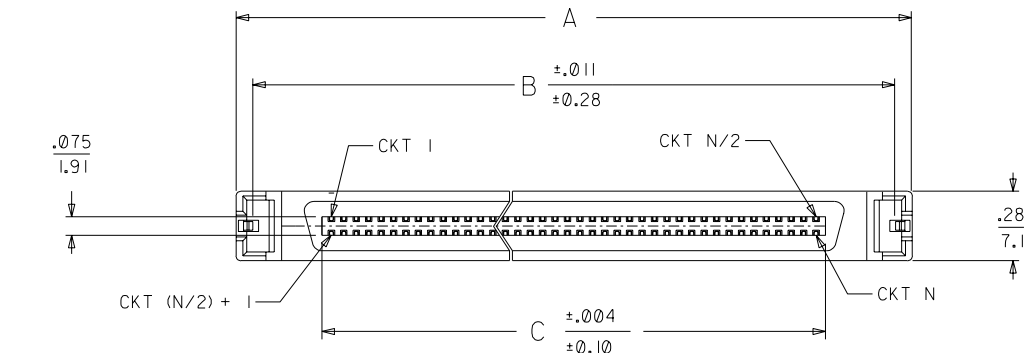


NOTES:

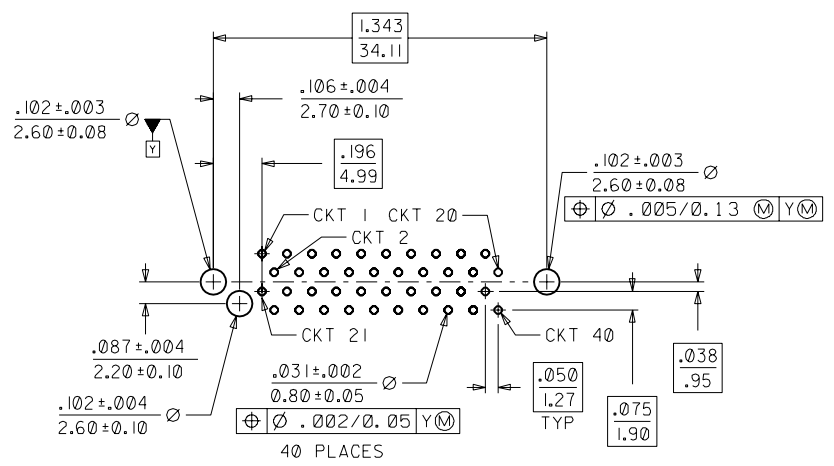
1. MATERIAL:  
HOUSING: I.R. COMPATIBLE POLYMER, GLASS FILLED, UL 94 V 0, BLACK  
TERMINALS: COPPER ALLOY  
BOARDLOCK: COPPER ALLOY
2. FINISH:  
TERMINALS: SELECTIVE GOLD IN CONTACT AREA  
THICKNESS = 30 MICROINCHES / 0.763 MICROMETERS  
SELECTIVE TIN-LEAD IN TAIL AREA  
THICKNESS = 100 MICROINCHES / 2.54 MICROMETERS  
NICKEL UNDERPLATE OVERALL.  
ESD BOARDLOCK:  
TIN-LEAD OVERALL.
3. PRODUCT SPECIFICATION: PS-73826-0000
4. FOUR DIGIT DATE CODE IN THIS LOCATION (WK YR).
5. CONTACT GAP WILL ACCOMMODATE MATING CONNECTOR OF:  
.063+/- .003 (1.60+/- 0.08)



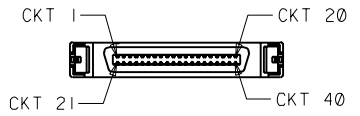
SECTION Z-Z		2	B
SCALE - 4:1		1	D
DIMENSIONS:		SHT	REV
<input type="checkbox"/> mm <input checked="" type="checkbox"/> INCH <input type="checkbox"/> mm ONLY		REVISE ON CAD ONLY	

CHG HSG PEG LENGTH EC NO. UCP2003-2168 DRWN: WHITE 03/04/10 CHK: BBARKER 03/04/10 APPR: SMILLER 03/04/10	QUALITY SYMBOLS	GENERAL TOLERANCES: (UNLESS SPECIFIED)		SCALE 2:1	DESIGN UNITS <input type="checkbox"/> mm <input checked="" type="checkbox"/> INCH	THIRD ANGLE PROJECTION	TITLE: SALES ASSEMBLY SCA-2 EXTENDED HEIGHT PRESS-FIT RECEPTACLE	MATERIAL NO.	DRAWING NO.	SHEET NO.										
	MAJOR $\nabla = 0$ CRITICAL $\nabla C = 0$	<table border="1"> <tr> <th></th> <th>mm</th> <th>INCH</th> </tr> <tr> <td>4 PLACES</td> <td><math>\pm 0.</math></td> <td><math>\pm .</math></td> </tr> <tr> <td>3 PLACES</td> <td><math>\pm 0.</math></td> <td><math>\pm 0.005</math></td> </tr> <tr> <td>2 PLACES</td> <td><math>\pm 0.13</math></td> <td><math>\pm 0.10</math></td> </tr> <tr> <td>1 PLACE</td> <td><math>\pm 0.25</math></td> <td><math>\pm .</math></td> </tr> </table>		mm	INCH	4 PLACES	$\pm 0.$	$\pm .$	3 PLACES	$\pm 0.$	$\pm 0.005$	2 PLACES	$\pm 0.13$	$\pm 0.10$	1 PLACE	$\pm 0.25$	$\pm .$	DRAWN BY & DATE ACHAMMER 98/05/07 CHECKED BY & DATE ACHAMMER 98/05/07 APPROVED BY & DATE BANAKIS 98/05/07	MOLEX INCORPORATED	
	mm	INCH																		
4 PLACES	$\pm 0.$	$\pm .$																		
3 PLACES	$\pm 0.$	$\pm 0.005$																		
2 PLACES	$\pm 0.13$	$\pm 0.10$																		
1 PLACE	$\pm 0.25$	$\pm .$																		
REV D	ANGULAR: $\pm 1/2^\circ$	CAD FILENAME S7382901.DGN	THIS DRAWING CONTAINS INFORMATION THAT IS INCORPORATED AND SHOULD NOT BE USED WITH		DRAWING NO. S		SHEET NO.													

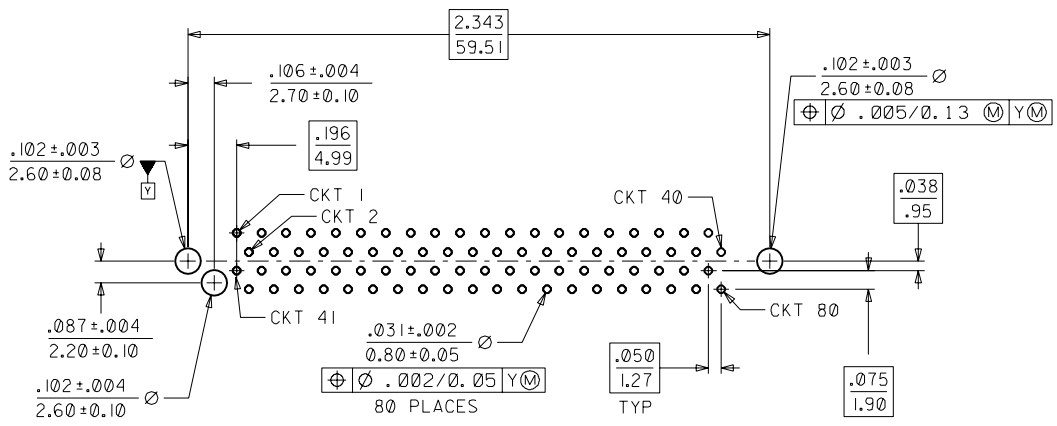
MATERIAL NUMBER	CIRCUIT SIZE	DIMENSION A	DIMENSION B	DIMENSION C	DIMENSION D	DIMENSION E	DIMENSION F	DIMENSION P	ADVANCED TERMINALS / CIRCUITS (SECTION Z-Z, SHEET 1)
738290001	80	2.717/(69.01)	2.583/(65.61)	2.025/(51.44)	2.343/(59.51)	1.066/(27.06)	.109/(2.77)	.125/(3.18)	1, 36, 37, 38, 39, 40, 41, 42, 43, 45, 46, 75, 76, 77, 78, 79, 80
738290002	40	1.717/(43.61)	1.583/(40.21)	1.025/(26.04)	1.343/(34.11)	.566/(14.38)	.109/(2.77)	.125/(3.18)	21, 22, 23, 26, 29, 32, 35, 36, 37, 38, 39, 40



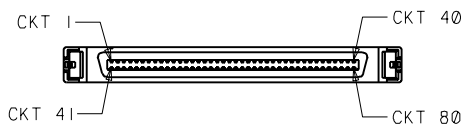
PCB LAYOUT FOR 40 CIRCUIT COMPONENT SIDE  
RECOMMENDED BOARD THICKNESS = .093 MIN



40 CIRCUIT TERMINAL SEQUENCE  
SCALE - 1:1



PCB LAYOUT FOR 80 CIRCUIT COMPONENT SIDE  
RECOMMENDED BOARD THICKNESS = .093 MIN



80 CIRCUIT TERMINAL SEQUENCE  
SCALE - 1:1

SEE SHEET 1	EC NO. DRWN: CHK: APPR:	DESCRIPTION	QUALITY SYMBOLS	GENERAL TOLERANCES: (UNLESS SPECIFIED)		SCALE 2:1	DESIGN UNITS	THIRD ANGLE PROJECTION	DIMENSIONS:	SHT	REV	
			MAJOR	mm	INCH	mm	INCH	mm	mm	mm	mm	
			CRITICAL	±0.	±.	mm	INCH	mm	INCH	mm	mm	mm
			C	±0.13	±0.10	mm	INCH	mm	INCH	mm	mm	mm
			ANGULAR: ± 1/2°	DRAWN BY & DATE		CHECKED BY & DATE		TITLE: SALES ASSEMBLY				
				ACHAMMER 98/05/07		ACHAMMER 98/05/07		SCA-2 EXTENDED HEIGHT				
				APPROVED BY & DATE		BANAKIS 98/05/07		PRESS-FIT RECEPTACLE				
				CAD FILENAME		S7382902.DGN		MOLEX INCORPORATED				
				DRAFT WHERE APPLICABLE MUST REMAIN WITHIN DIMENSIONS		MATERIAL NO.		DRAWING NO.		SHEET NO.		
				THIS DRAWING CONTAINS INFORMATION THAT IS PROPRIETARY TO MOLEX INCORPORATED AND SHOULD NOT BE USED WITHOUT WRITTEN PERMISSION.		SEE TABLE		SD-73829-001		2		
											SIZE B	