

74VHC132

Quad 2-Input NAND Schmitt Trigger

General Description

The 74VHC132 is an advanced high speed CMOS 2-input NAND Schmitt Trigger Gate fabricated with silicon gate CMOS technology. It achieves the high-speed operation similar to Bipolar Schottky TTL while maintaining the CMOS low power dissipation. Pin configuration and function are the same as the VHC00 but the inputs have hysteresis between the positive-going and negative-going input thresholds, which are capable of transforming slowly changing input signals into sharply defined, jitter-free output signals, thus providing greater noise margin than conventional gates. An input protection circuit ensures that 0V to 7V can be applied to the input pins without regard to the supply voltage. This device can be used to interface 5V to 3V systems and two

supply systems such as battery backup. This circuit prevents device destruction due to mismatched supply and input voltages.

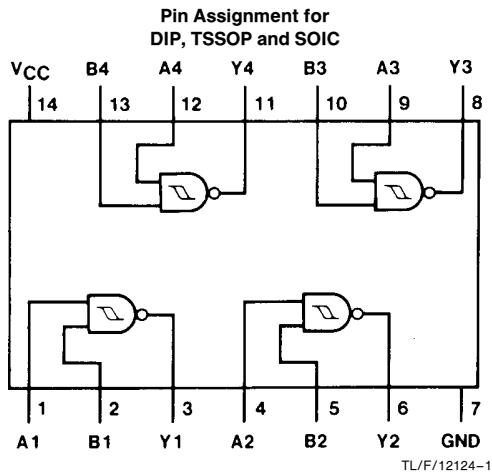
Features

- High noise immunity
- Power down protection
- Low power
- Low noise
- Balanced propagation delays
- Pin and function compatible with 74HC132

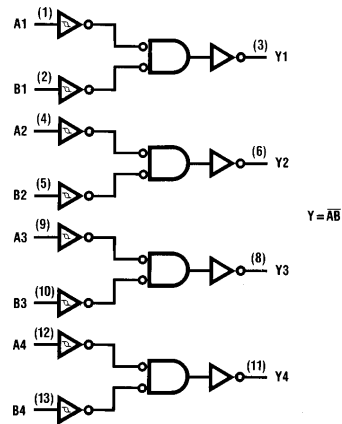
Commercial	Package Number	Package Description
74VHC132M	M14A	14-Lead Molded JEDEC SOIC
74VHC132SJ	M14D	14-Lead Molded EIAJ SOIC
74VHC132MTC	MTC14	14-Lead Molded JEDEC Type 1 TSSOP
74VHC132N	N14A	14-Lead Molded DIP

Note: Surface mount packages are also available on Tape and Reel. Specify by appending the suffix letter "X" to the ordering code.

Connection Diagram



Logic Diagram



TL/F/12124-2

Absolute Maximum Ratings (Note 1)

Supply Voltage (V_{CC})	-0.5V to +7.0V
DC Input Voltage (V_{IN})	-0.5V to +7.0V
DC Output Voltage (V_{OUT})	-0.5V to V_{CC} + 0.5V
Input Diode Current (I_{IK})	-20 mA
Output Diode Current (I_{OK})	±20 mA
DC Output Current (I_{OUT})	±25 mA
DC V_{CC} /GND Current (I_{CC})	±50 mA
Storage Temperature (T_{STG})	-65°C to +150°C
Lead Temperature (T_L) (Soldering, 10 seconds)	260°C

Note 1: *Absolute Maximum Ratings are values beyond which the device may be damaged or have its useful life impaired. The databook specifications should be met, without exception, to ensure that the system design is reliable over its power supply, temperature, and output/input loading variables. National does not recommend operation outside databook specifications.*

Recommended Operating Conditions

Supply Voltage (V_{CC})	2.0V to +5.5V
Input Voltage (V_{IN})	0V to +5.5V
Output Voltage (V_{OUT})	0V to V_{CC}
Operating Temperature (T_{OPR})	-40°C to +85°C

DC Characteristics for 'VHC Family Devices

Symbol	Parameter	V_{CC} (V)	74VHC			74VHC		Units	Conditions
			$T_A = 25^\circ\text{C}$			$T_A = -40^\circ\text{C}$ to $+85^\circ\text{C}$			
			Min	Typ	Max	Min	Max		
V_P	Positive Threshold Voltage	3.0		2.20		2.20	V		
		4.5		3.15		3.15			
		5.5		3.85		3.85			
V_N	Negative Threshold Voltage	3.0	0.90		0.90		V		
		4.5	1.35		1.35				
		5.5	1.65		1.65				
V_H	Hysteresis Output Voltage	3.0	0.30	1.20	0.30	1.20	V		
		4.5	0.40	1.40	0.40	1.40			
		5.5	0.50	1.60	0.50	1.60			
V_{OH}	High Level Output Voltage	2.0	1.9	2.0	1.9		V	$V_{IN} = V_{IH}$ or V_{IL}	$I_{OH} = -50 \mu\text{A}$
		3.0	2.9	3.0	2.9				
		4.5	4.4	4.5	4.4		V		$I_{OH} = -4 \text{ mA}$ $I_{OH} = -8 \text{ mA}$
		3.0	2.58		2.48				
		4.5	3.94		3.80				
		V_{OL}	Low Level Output Voltage	2.0		0.0	0.1	0.1	V
3.0				0.0	0.1	0.1			
4.5				0.0	0.1	0.1	V		$I_{OL} = 4 \text{ mA}$ $I_{OL} = 8 \text{ mA}$
3.0					0.36	0.44			
4.5					0.36	0.50			
I_{IN}	Input Leakage Current			0-5.5		±0.1		±1.0	μA
I_{CC}	Quiescent Supply Current	5.5		2.0		20.0	μA	$V_{IN} = V_{CC}$ or GND	

DC Characteristics for 'VHC Family Devices:

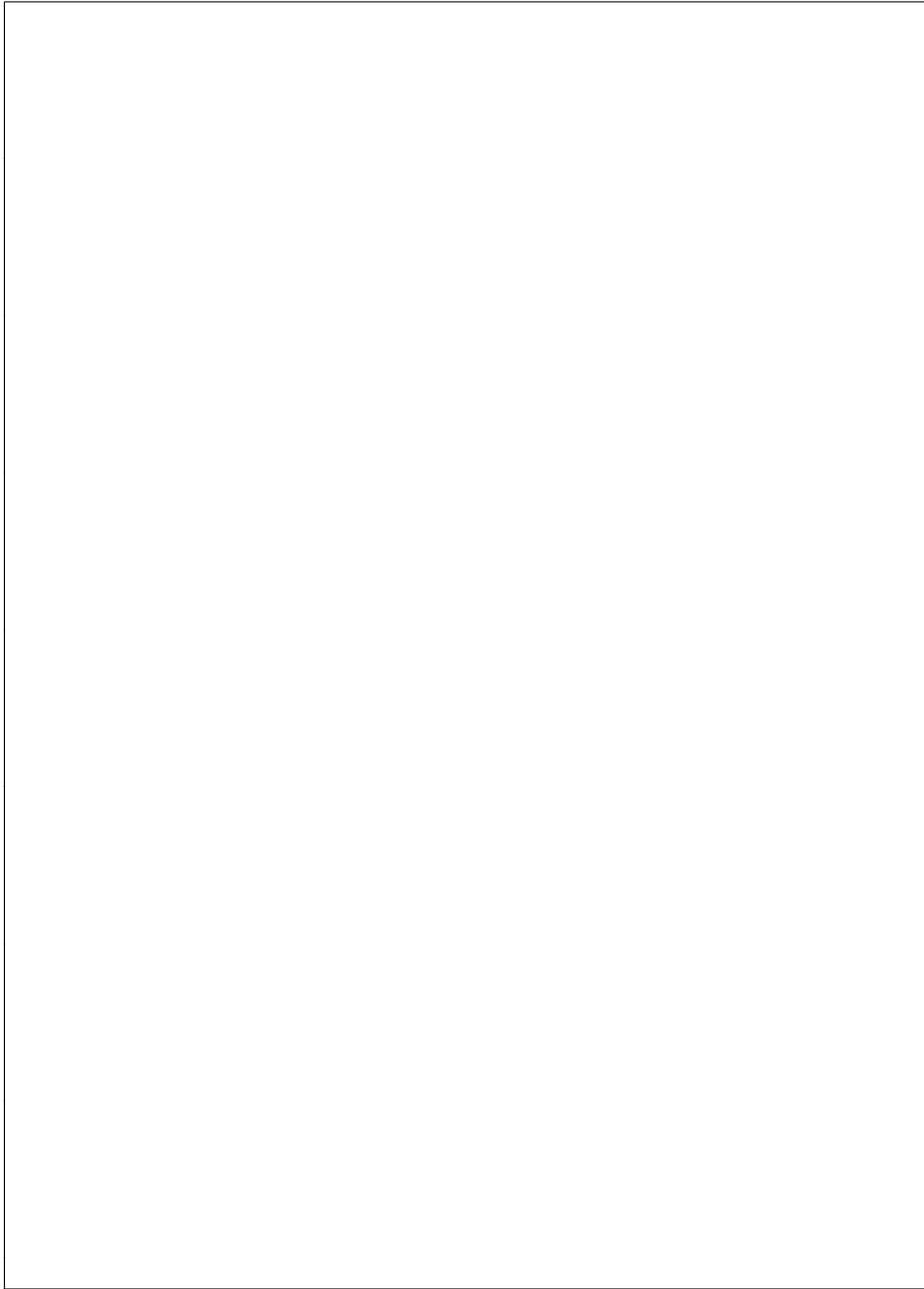
Symbol	Parameter	V _{CC} (V)	74VHC		Units	Conditions
			T _A = 25°C			
			Typ	Limit		
*V _{OLP}	Quiet Output Maximum Dynamic V _{OL}	5.0	0.3	0.8	V	C _L = 50 pF
*V _{OLV}	Quiet Output Maximum Dynamic V _{OL}	5.0	-0.3	-0.8	V	C _L = 50 pF
*V _{IHD}	Maximum High Level Dynamic Input Voltage	5.0		3.5	V	C _L = 50 pF
*V _{ILD}	Maximum Low Level Dynamic Input Voltage	5.0		1.5	V	C _L = 50 pF

*Parameter guaranteed by design

AC Electrical Characteristics for 'VHC Family Devices

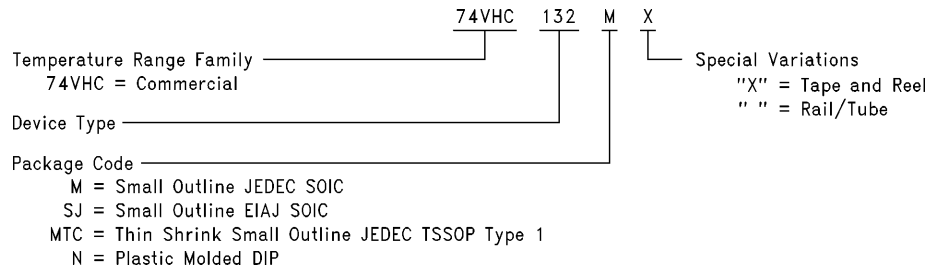
Symbol	Parameter	V _{CC} (V)	74VHC			74VHC		Units	Conditions
			T _A = 25°C			T _A = -40°C to +85°C			
			Min	Typ	Max	Min	Max		
t _{PHL} , t _{PHL}	Propagation Delay	3.3 ± 0.3	6.1	11.9	1.0	14.0	ns	C _L = 15 pF	
			8.0	15.4	1.0	17.5		C _L = 50 pF	
		5.0 ± 0.5	3.9	7.7	1.0	9.0	ns	C _L = 15 pF	
			5.9	9.7	1.0	11.0		C _L = 50 pF	
C _{IN}	Input Capacitance		4	10		10	pF	V _{CC} = Open	
C _{PD}	Power Dissipation Capacitance		16				pF	(Note 1)	

Note 1: C_{PD} is defined as the value of the internal equivalent capacitance which is calculated from the operating current consumption without load. Average operating current can be obtained from the equation: I_{CC (opr.)} = C_{PD} * V_{CC} * I_{IN} + I_{CC}/4 (per gate)



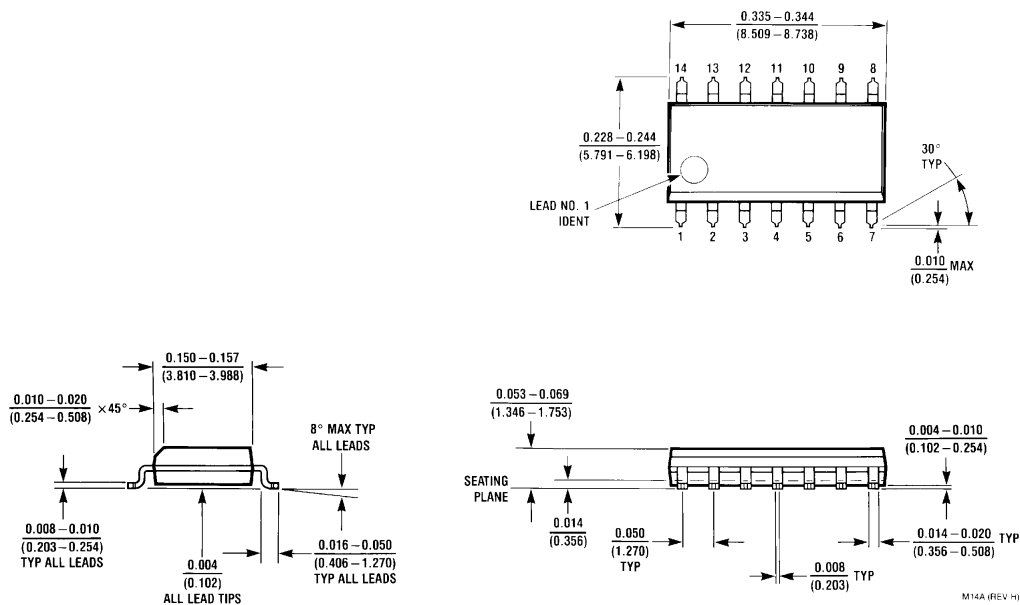
Ordering Information

The device number is used to form part of a simplified purchasing code, where the package type and temperature range are defined as follows:



TL/F/12124-3

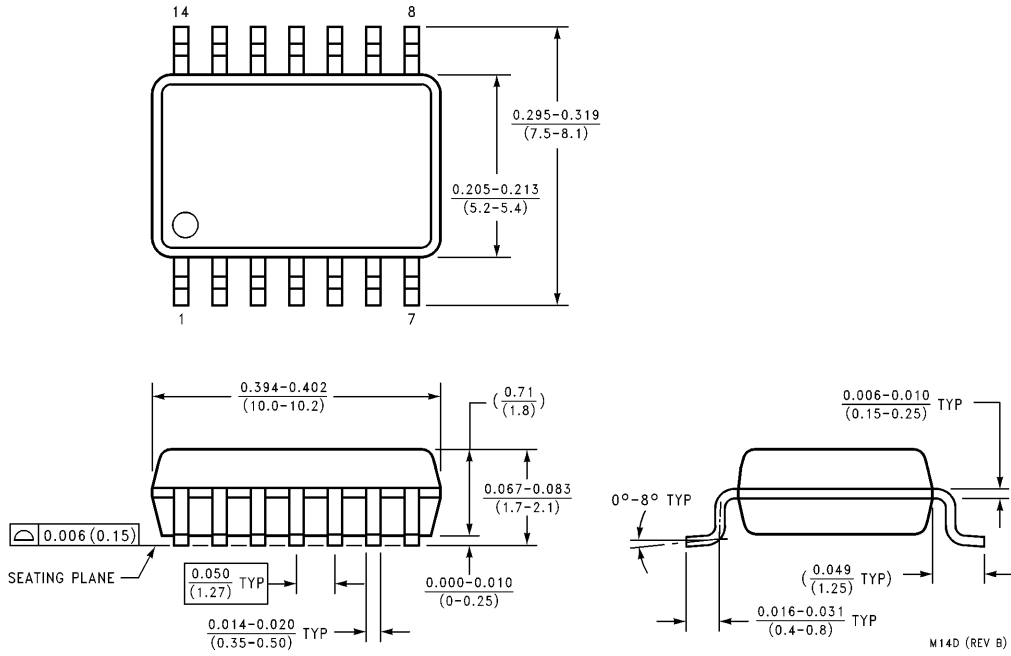
Physical Dimensions inches (millimeters)



M14A (REV H)

14-Lead Molded JEDEC SOIC
Order Number 74VHC132M
NS Package Number M14A

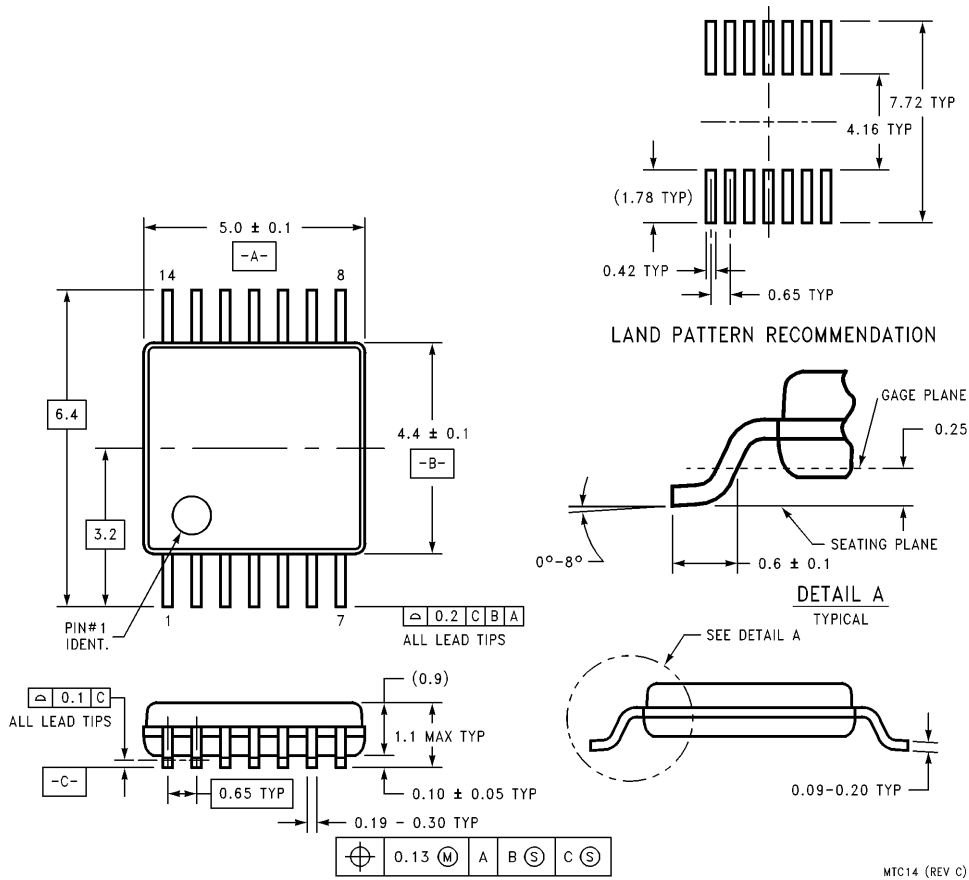
Physical Dimensions inches (millimeters) unless otherwise noted (Continued)



14-Lead Molded EIAJ SOIC
Order Number 74VHC132SJ
NS Package Number M14D

M14D (REV B)

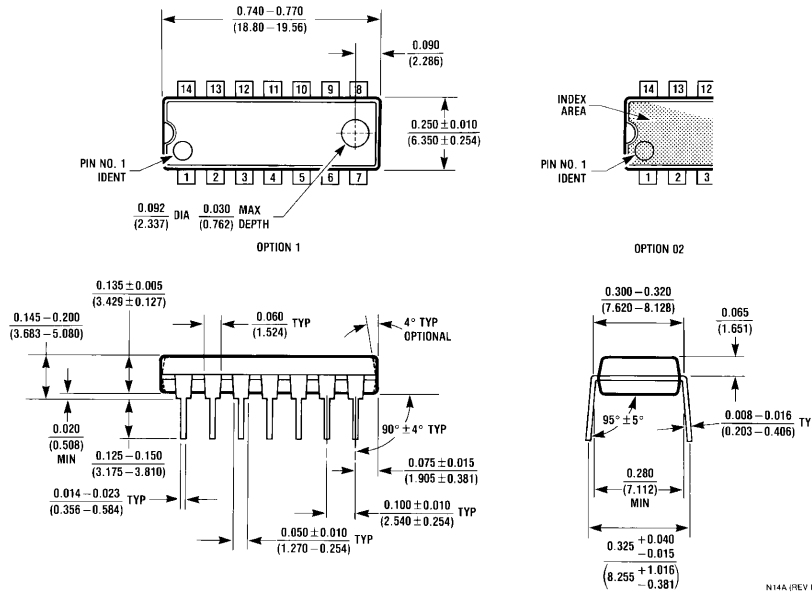
Physical Dimensions inches (millimeters) unless otherwise noted (Continued)



14-Lead Molded JEDEC Type 1 TSSOP
Order Number 74VHC132MTC
NS Package Number MTC14

MTC14 (REV C)

Physical Dimensions inches (millimeters) unless otherwise noted (Continued)




14-Lead Molded DIP
Order Number 74VHC132N
NS Package Number N14A

LIFE SUPPORT POLICY

NATIONAL'S PRODUCTS ARE NOT AUTHORIZED FOR USE AS CRITICAL COMPONENTS IN LIFE SUPPORT DEVICES OR SYSTEMS WITHOUT THE EXPRESS WRITTEN APPROVAL OF THE PRESIDENT OF NATIONAL SEMICONDUCTOR CORPORATION. As used herein:

1. Life support devices or systems are devices or systems which, (a) are intended for surgical implant into the body, or (b) support or sustain life, and whose failure to perform, when properly used in accordance with instructions for use provided in the labeling, can be reasonably expected to result in a significant injury to the user.
2. A critical component is any component of a life support device or system whose failure to perform can be reasonably expected to cause the failure of the life support device or system, or to affect its safety or effectiveness.

 <p>National Semiconductor Corporation 1111 West Bardin Road Arlington, TX 76017 Tel: 1(800) 272-9959 Fax: 1(800) 737-7018 http://www.national.com</p>	<p>National Semiconductor Europe Fax: +49 (0) 180-530 85 86 Email: europe.support@nsc.com Deutsch Tel: +49 (0) 180-530 85 85 English Tel: +49 (0) 180-532 78 32 Français Tel: +49 (0) 180-532 93 58 Italiano Tel: +49 (0) 180-534 16 80</p>	<p>National Semiconductor Hong Kong Ltd. 19th Floor, Straight Block, Ocean Centre, 5 Canton Rd. Tsimshatsui, Kowloon Hong Kong Tel: (852) 2737-1600 Fax: (852) 2736-9960</p>	<p>National Semiconductor Japan Ltd. Tel: 81-043-299-2308 Fax: 81-043-299-2408</p>
---	--	---	---

National does not assume any responsibility for use of any circuitry described, no circuit patent licenses are implied and National reserves the right at any time without notice to change said circuitry and specifications.