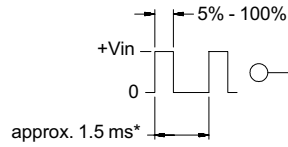
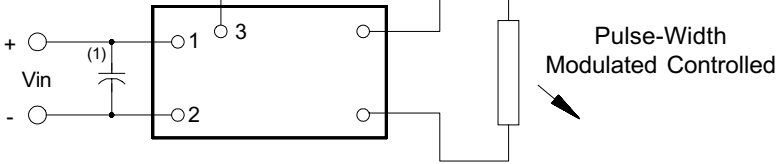


8m052329

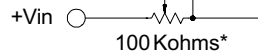
3 Dimming Options



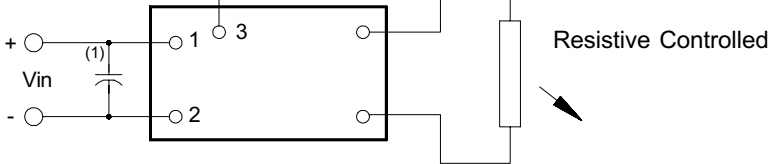
* should be selected to be compatible with LCD and display driver



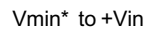
Pulse-Width Modulated Controlled



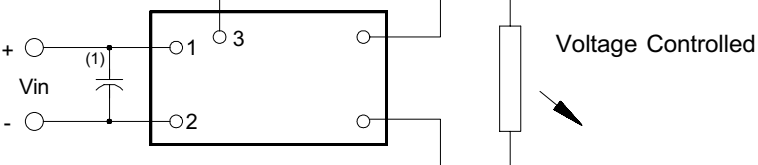
* value should be low enough to maintain minimum tube current at minimum brightness



Resistive Controlled



* Vmin should be high enough to maintain minimum tube current



Voltage Controlled

Note 1 Input by-pass capacitor (25 uf - 100uf) may be required to reduce reflected ripple.



Endicott Research Group, Inc.

2601 Wayne St., Endicott NY 13760

607-754-9187



Endicott Research Group, Inc.

2601 Wayne St., Endicott NY 13760

607-754-9187 Fax 607-754-9255

<http://www.ergpower.com>

Specifications and Applications Information

12/16/99

Preliminary

The ERG 8m052329 (8m Class) low profile dc to ac inverter is specifically designed to power the Sharp LM64P831 LCD display module to a moderate brightness level from a +5 volt dc source.

This low profile inverter features:

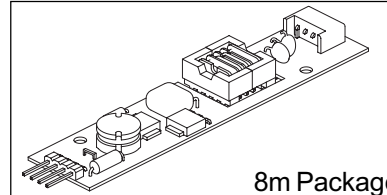
- ✓ Less Than 8 mm in Height
- ✓ LCD Module Specific
- ✓ Display Compatible Output Connector
- ✓ Firm Specifications
- ✓ Application Information
- ✓ Designed, Manufactured and Supported in the USA
- ✓ Custom Input and Output Voltages
- ✓ Flexible System Interface
- ✓ Notebook Display Head Compatible

Pin Descriptions

Input Connector	Output Connector
4 pins are 0.315" [8,00] Long, 0.025" [0,63] Square and are on 0.100" [2,54] Centers.	Mitsumi M60-04-30-134P
Con1-1 Vin(+) Con1-2 GND Con1-3 Control Con1-4 NC	Con2-1 ACout Con2-2 NC Con2-3 NC Con2-4 ACout

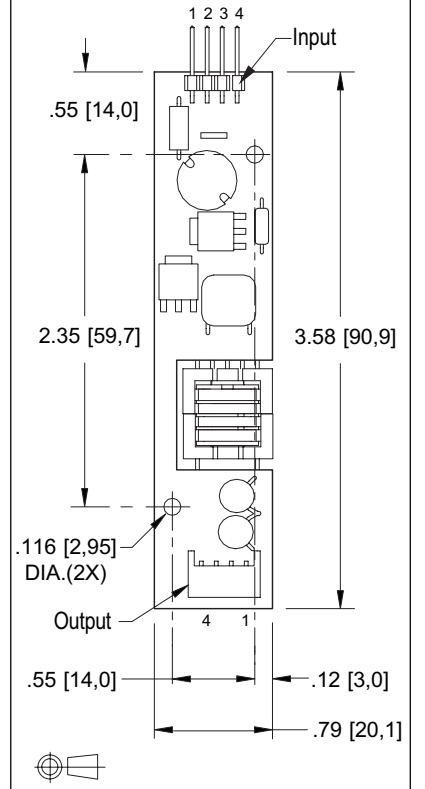
8m052329

8m Class
DC to AC Inverter



8m Package

Package Configuration



Absolute Maximum Ratings

Rating	Symbol	Value	Units
Input Voltage Range	Vin	-0.3 to +5.5	Vdc
Operating Temperature	To	0 to +70	°C
Storage Temperature	Tstg	-40 to +85	°C

Recommended Operating Conditions

Rating	Symbol	Value	Units
Input Voltage	Vin	+2.5 to 5.5	Vdc

Electrical Characteristics

Unless otherwise noted Vin = 5.00 Volts dc and Ta = 25 °C

Characteristic	Symbol	Min	Typ	Max	Units
Input Current	Iin	-	.56	.64	Adc
Operating Frequency	Fo	29	34	39	KHz
Minimum Output Voltage	Vout (min)	1100	-	-	Vrms
Efficiency	η	-	74	-	%
Output Current	Iout	-	5.3	-	marms
Output Voltage (When Powering a Load simulating the referenced display)	Vout	-	390	-	Vrms

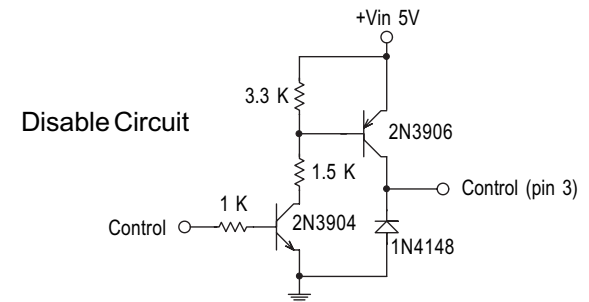
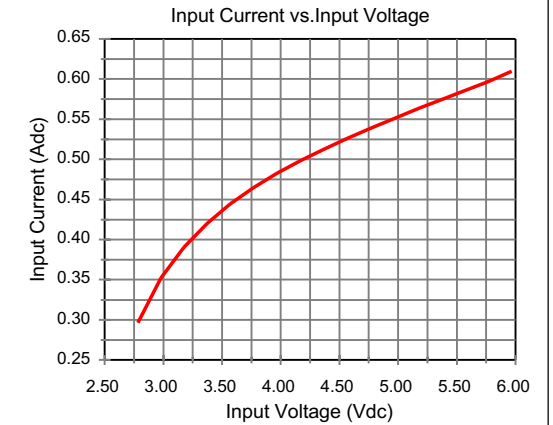
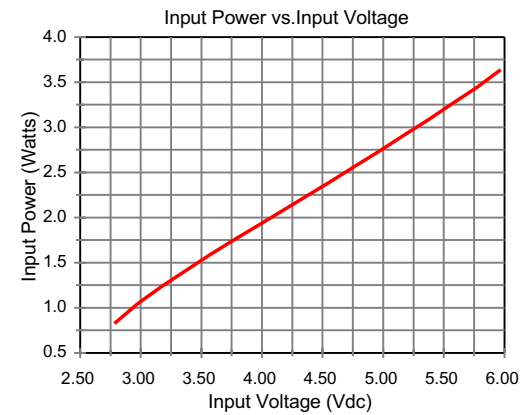
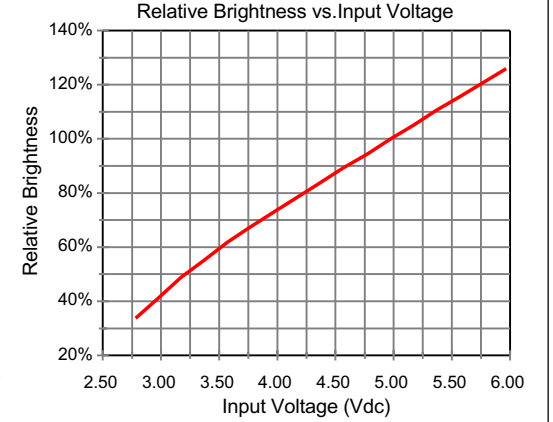
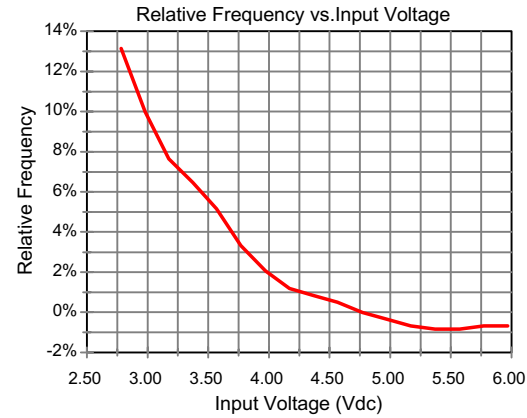
After tube has been allowed to warm-up for 5 minutes External Disable Circuit shown on page 3. Specifications subject to change without notice.



Endicott Research Group, Inc.

Made in USA

Typical Performance Curves



Endicott Research Group, Inc.