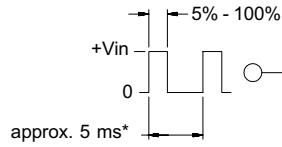
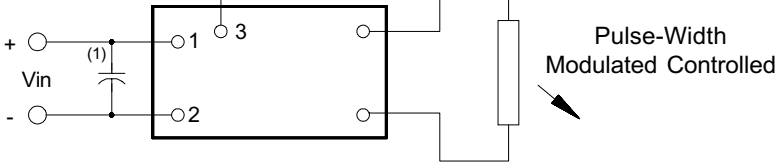


8m052547

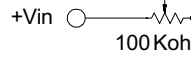
3 Dimming Options



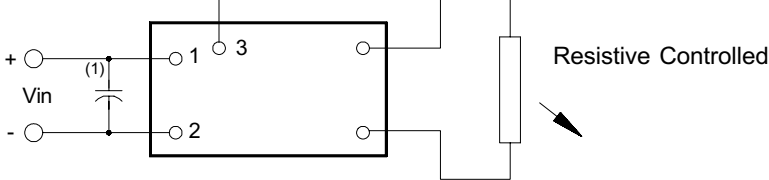
* should be selected to be compatible with LCD and display driver



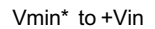
Pulse-Width Modulated Controlled



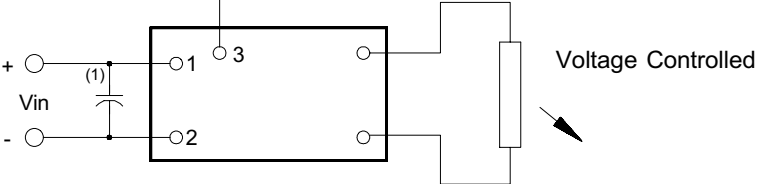
* value should be low enough to maintain minimum tube current at minimum brightness



Resistive Controlled



* Vmin should be high enough to maintain minimum tube current



Voltage Controlled

Note 1 Input by-pass capacitor (25 uf - 100uf) may be required to reduce reflected ripple.



Endicott Research Group, Inc.

2601 Wayne St., Endicott NY 13760

607-754-9187



Endicott Research Group, Inc.

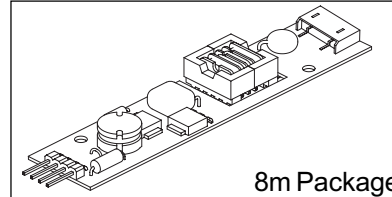
2601 Wayne St., Endicott NY 13760

607-754-9187 Fax 607-754-9255

<http://www.ergpower.com>

8m052547

8m Class
DC to AC Inverter



8m Package

Specifications and
Applications Information

5/3/01

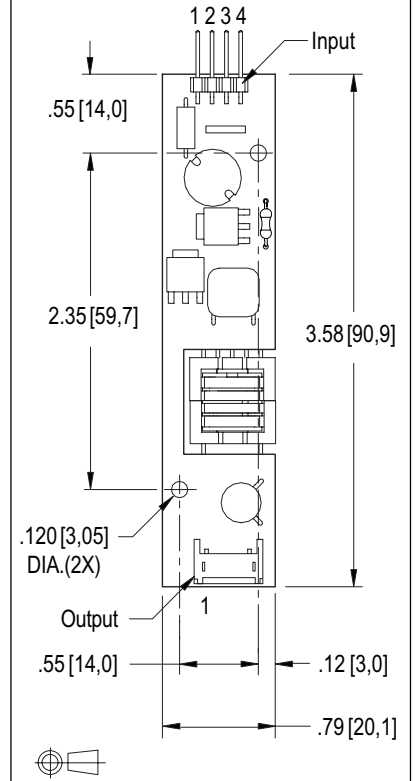
Preliminary

The ERG 8m052547 (8m Class) low profile dc to ac inverter is specifically designed to power the Kyocera KHS072VG1MB-G90 LCD display module to a moderate brightness level from a +5 volt dc source.

This low profile inverter features:

- ✓ Less Than 8 mm in Height
- ✓ LCD Module Specific
- ✓ Display Compatible Output Connector
- ✓ Firm Specifications
- ✓ Application Information
- ✓ Designed, Manufactured and Supported in the USA
- ✓ Custom Input and Output Voltages
- ✓ Flexible System Interface
- ✓ Notebook Display Head Compatible

Package Configuration



Pin Descriptions

Input Connector	Output Connector
4 pins are 0.315" [8,00] Long, 0.025" [0,63] Square and are on 0.100" [2,54] Centers.	JST SM02(8.0)B-BHS-1-TB
Con1-1 Vin(+)	Con2-1 ACout
Con1-2 GND	Con2-2 NC
Con1-3 Control	Con2-3 NC
Con1-4 NC	Con2-4 ACout

Absolute Maximum Ratings

Rating	Symbol	Value	Units
Input Voltage Range	V _{in}	-0.3 to +5.5	Vdc
Operating Temperature	T _o	0 to +70	°C
Storage Temperature	T _{stg}	-40 to +85	°C

Recommended Operating Conditions

Rating	Symbol	Value	Units
Input Voltage	V _{in}	+2.5 to 5.5	Vdc

Electrical Characteristics

Unless otherwise noted V_{in} = 5.00 Volts dc and T_a = 25 °C

Characteristic	Symbol	Min	Typ	Max	Units
Input Current	I _{in}	-	.47	.55	Adc
Operating Frequency	F _o	30	35	40	KHz
Minimum Output Voltage	V _{out} (min)	1400	-	-	Vrms
Efficiency	η	-	64	-	%
Output Current	I _{out}	-	4.2	-	marms
Output Voltage (When powering a load simulating the referenced display)	V _{out}	-	360	-	Vrms
Pin3 Input Current Requirement	-	-	11	-	madc

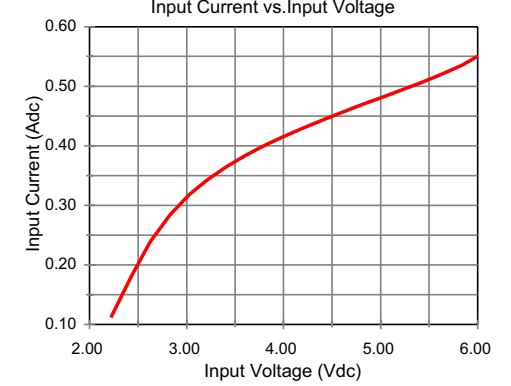
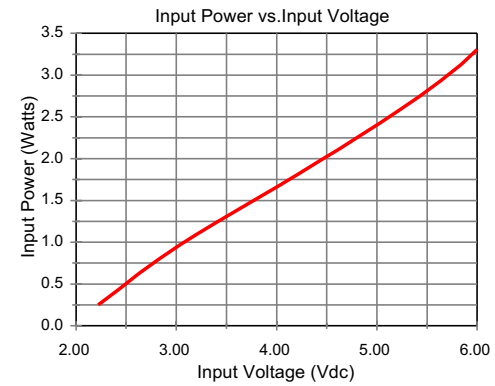
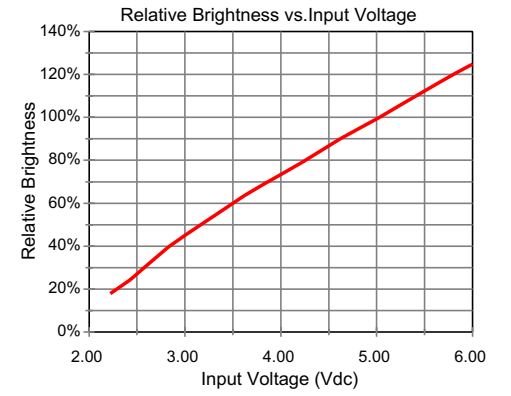
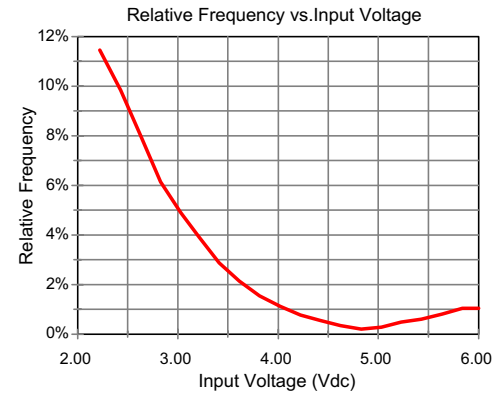
After tube has been allowed to warm-up for 5 minutes External Disable Circuit shown on page 3. Specifications subject to change without notice.



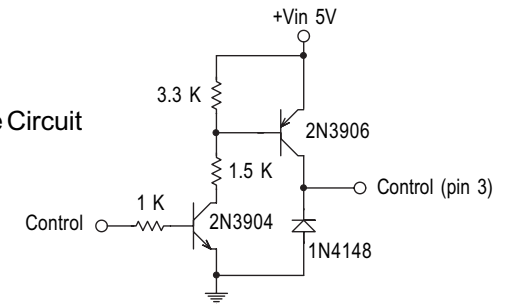
Endicott Research Group, Inc.

Made in USA

Typical Performance Curves



Disable Circuit



Endicott Research Group, Inc.