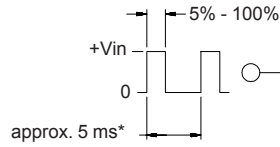
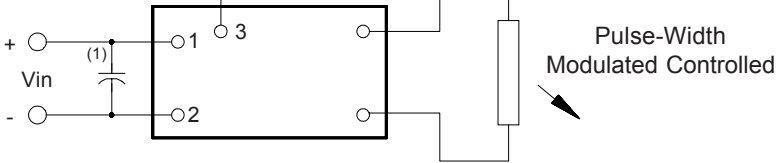


8m072576

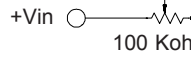
3 Dimming Options



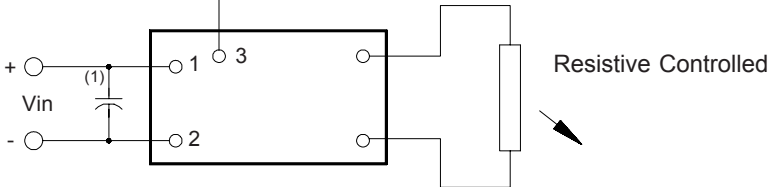
\* should be selected to be compatible with LCD and display driver



Pulse-Width Modulated Controlled



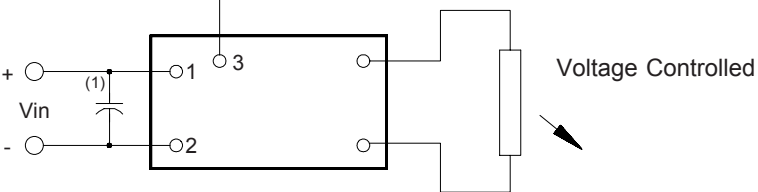
\* value should be low enough to maintain minimum tube current at minimum brightness



Resistive Controlled



\* Vmin should be high enough to maintain minimum tube current



Voltage Controlled

Note 1 Input by-pass capacitor (25 uf - 100uf) may be required to reduce reflected ripple.



Endicott Research Group, Inc.

2601 Wayne St., Endicott NY 13760

607-754-9187



Endicott Research Group, Inc.

2601 Wayne St., Endicott NY 13760

607-754-9187 Fax 607-754-9255

http://www.ergpower.com

Specifications and Applications Information

7/3/01

Preliminary

The ERG 8m072576 (**8m Class**) low profile dc to ac inverter is specifically designed to power the Sharp LQ039Q2DS53 LCD display module to a moderate brightness at a reduced input current level from a +5.4 to +8.4 volt dc source.

This low profile inverter features:

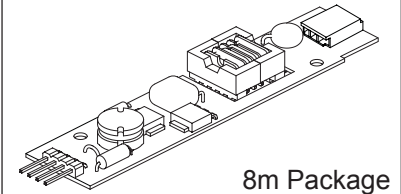
- ✓ Less Than 8 mm in Height
- ✓ LCD Module Specific
- ✓ Display Compatible Output Connector
- ✓ Firm Specifications
- ✓ Application Information
- ✓ Designed, Manufactured and Supported in the USA
- ✓ Custom Input and Output Voltages
- ✓ Flexible System Interface
- ✓ Notebook Display Head Compatible

Pin Descriptions

Input Connector	Output Connector
4 pins are 0.315" [8,00] Long, 0.025" [0,63] Square and are on 0.100" [2,54] Centers.	JST SM02B-BHSS-1-TB
Con1-1 Vin(+) Con1-2 GND Con1-3 Control Con1-4 N/C	Con2-1 ACout Con2-2 ACout

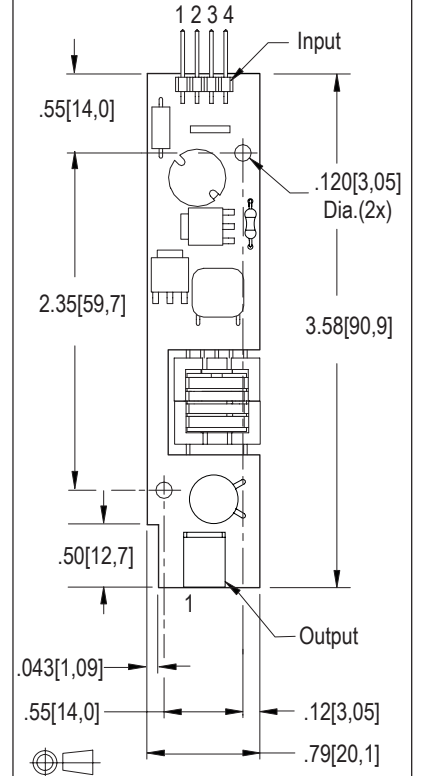
8m072576

8m Class DC to AC Inverter



8m Package

Package Configuration



# 8m072576

## Absolute Maximum Ratings

Rating	Symbol	Value	Units
Input Voltage Range	Vin	-0.3 to +10.5	Vdc
Operating Temperature	To	-0 to +70	°C
Storage Temperature	Tstg	-40 to +85	°C

## Recommended Operating Conditions

Rating	Symbol	Value	Units
Input Voltage	Vin	+4.0 to 8.4	Vdc

## Electrical Characteristics

Unless otherwise noted Vin = 6.9 Volts dc and Ta = 25 °C

Characteristic	Symbol	Min	Typ	Max	Units
Input Current	Iin	-	.16	.19	Adc
Operating Frequency	Fo	27	32	37	KHz
Minimum Output Voltage	Vout (min)	1086	-	-	Vrms
Efficiency	$\eta$	-	67	-	%
Output Current	Iout	-	2.45	-	marms
Output Voltage (When powering a load simulating the referenced display.)	Vout	-	300	-	Vrms
Pin3 Input Current Requirement	-	-	4	-	madc
Peak Input Current	-	-	320	-	madc

After tube has been allowed to warm-up for 5 minutes External Disable Circuit shown on page 3. Specifications subject to change without notice.

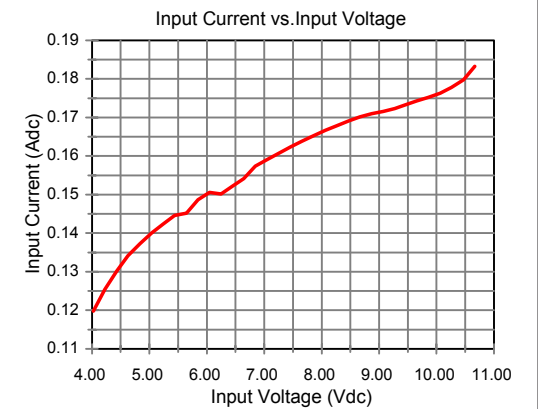
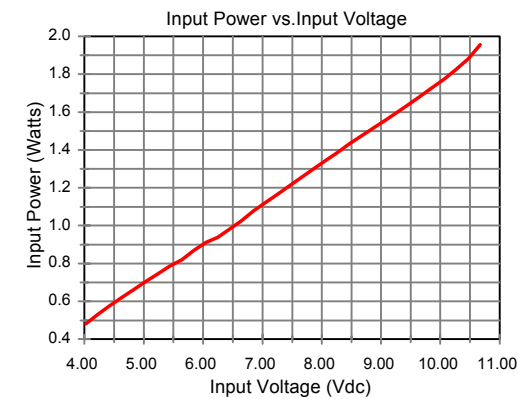
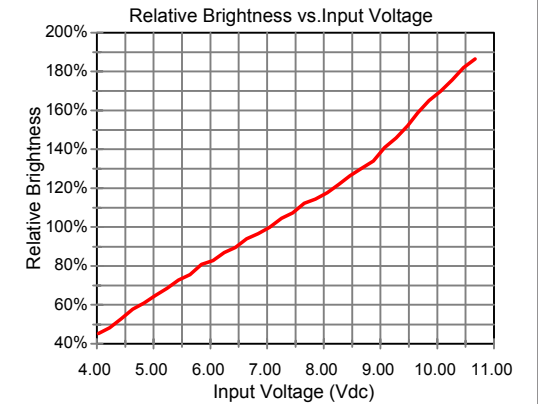
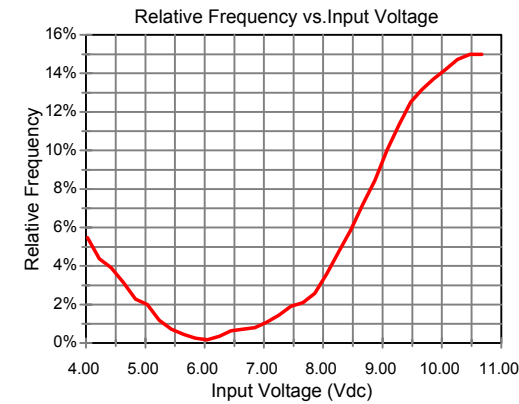


Endicott Research Group, Inc.

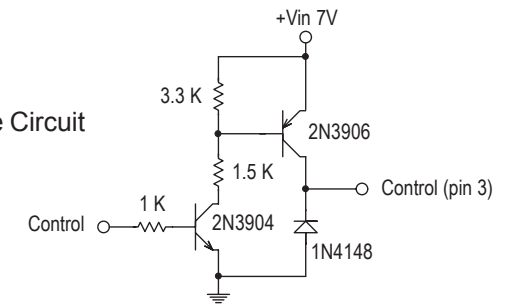
Made in USA

## Typical Performance Curves

# 8m072576



Disable Circuit



Endicott Research Group, Inc.