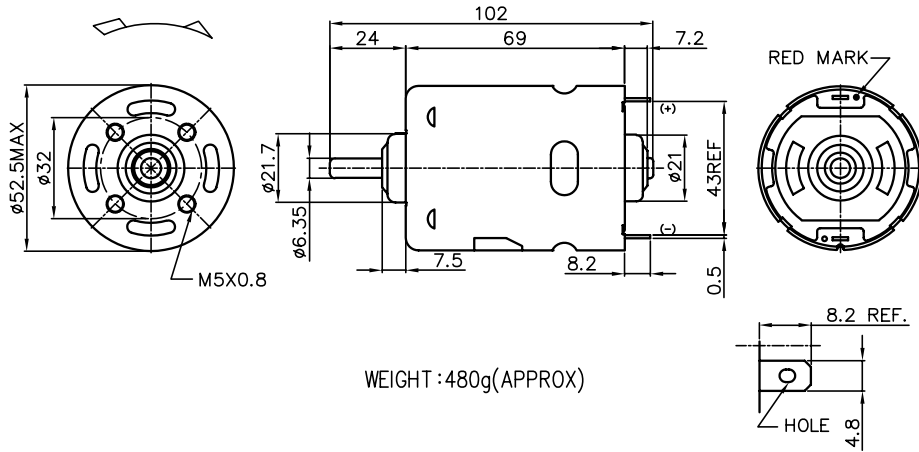


# 987 series Ø52 mm 35-112 W



WEIGHT : 480g(APPROX)



Model -  -   
 Cabron brush = C      V = Varistor  
 Metal brush = M      C = Capacitor

## MOTOR DATA

Part name	987-5025F-C	987-8012F-C	987-8010F-C	987-5524F-C
Diameter (mm)	52	52	52	52
Lenth (mm)	69	69	69	69
Nominal voltage (V)	12	12	12	24
Nominal speed (rpm)	4000	9000	11100	9700
Nominal torque (mNm)	83.5	113.2	87.5	1101.9
Nominal current A	4.8	13.1	11.9	6.3
No load speed (rpm)	5050	10800	13100	11000
No load current A	1.20	2.00	2.30	0.95
Stall torque (mNm)	417.6	787.3	676.4	857.5
Starting current (A)	20.3	79.6	82.5	44.6
Output (W)	35	107	102	112
Efficiency (%)	63	68	72	74
Operating temperature deg. C	-10..+60	-10..+60	-10..+60	-10..+60