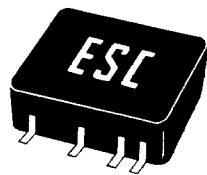
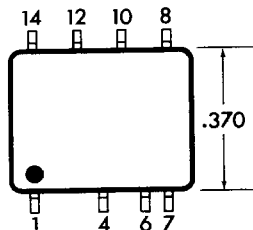




SURFACE MOUNTING DIGITAL DELAY LINES TTL AND DTL COMPATIBLE 5 TAPS • G AND J LEADS

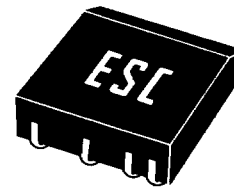
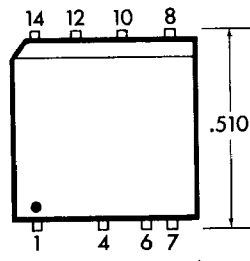
SERIES GSMT AND JSMT

Also available as low power series GSMLT & JSMLT

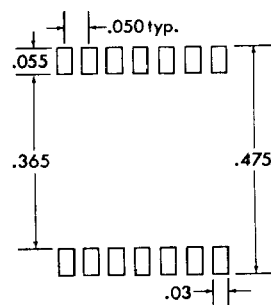
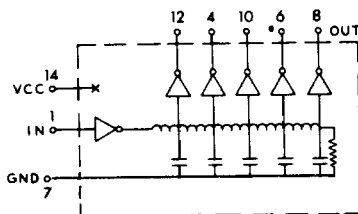
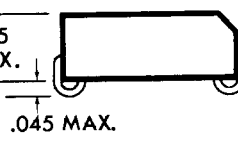
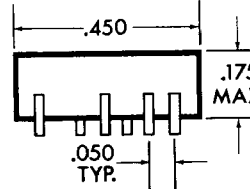
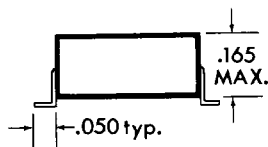
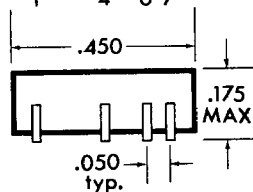


GSMT

White Dot locates Pin 1



JSMT



Suggested P.C. Board solder pads for GSMT & JSMT.

Intermediate delay values available upon request.

Model No.		Total Delay (ns)	Delay/ Tap (ns)
G Style	J Style		
GSMT25	JSMT25	25	5
GSMT30	JSMT30	30	6
GSMT45	JSMT45	45	9
GSMT50	JSMT50	50	10
GSMT75	JSMT75	75	15
GSMT100	JSMT100	100	20
GSMT125	JSMT125	125	25
GSMT150	JSMT150	150	30
GSMT200	JSMT200	200	40
GSMT250	JSMT250	250	50

DC PARAMETERS		LIMITS	
		Min.	Max.
V_{oh}	$V_{cc} = \min$ $I_{oh} = 1.0 \text{ mA}$	2.5V	—
V_{ol}	$V_{cc} = \min$ $I_{ol} = 20 \text{ mA}$	—	0.5V
I_{ih}	$V_{cc} = \max$ $V_i = 2.7V$	—	50 μA
I_{il}	$V_{cc} = \max$ $V_i = 0.5V$	-2.0 mA	—
I_i	$V_{cc} = \max$ $V_i = 5.5V$	—	1.0 mA
V_i	$V_{cc} = \min$ $I_{in} = -18 \text{ mA}$	-1.2vdc	—
I_{cc}	$V_{cc} = \max$ outputs low	—	70 mA

SPECIFICATIONS:

- Supply voltage (V_{cc}): 5.0VDC \pm 5%
- Delay tolerance: \pm 2ns or 5% whichever is greater
- Rise Time: 4ns max
- Minimum Pulse Width: 40% of total delay
- Maximum Duty Cycle: 50%
- * ● Operating temp. range: 0 to 70°C
- Temp. coeff. of delay: 1.0ns + 500ppm/°C
- Terminals: .018 w x .010 th.

TEST CONDITIONS:

- Temperature: 25° \pm 5°C; $V_{cc} = 5.0VDC$
- Input pulse width: 1.2 times the total delay time
- Pulse spacing: 5 times the total delay time
- Input rise time: 2ns; input pulse amplitude 3.0VDC
- All outputs loaded with 15pf
- Time delays measured at the 1.5 volts level on the leading edges
- Rise time measured from .75 to 2.4V

* The JSMT series is available for -55°C to +125°C operation. See page 32.

ESC ELECTRONICS CORP. / 534 Bergen Blvd. / Palisades Park, N. J. 07650 / (201) 947-0400 / TWX 710-991-9780