

This document was generated on 04/19/2010

**PLEASE CHECK WWW.MOLEX.COM FOR LATEST PART INFORMATION**

**Part Number:** [0416710028](#)  
**Status:** **Active**  
**Description:** 3.96mm (.156") Pitch KK® Header, Breakaway, Vertical, Square Pin, with Friction Lock, 6 Circuits, 0.76µm (30µ") Gold (Au) Selective Plating

**Documents:**

[3D Model](#) [Product Specification PS-08-50 \(PDF\)](#)  
[Drawing \(PDF\)](#) [RoHS Certificate of Compliance \(PDF\)](#)

**Agency Certification**

CSA LR19980  
 UL E29179

**General**

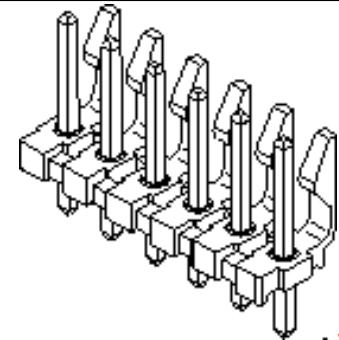
Product Family PCB Headers  
 Series [41671](#)  
 Application Wire-to-Board  
 Product Name KK®

**Physical**

Breakaway Yes  
 Circuits (Loaded) 6  
 Circuits (maximum) 6  
 Color - Resin Black  
 Durability (mating cycles max) 50  
 Flammability 94V-0  
 Glow-Wire Compliant No  
 Lock to Mating Part Yes  
 Material - Metal Brass  
 Material - Plating Mating Gold  
 Material - Plating Termination Tin  
 Material - Resin Polyester  
 Number of Rows 1  
 Orientation Vertical  
 PC Tail Length (in) 0.172 In  
 PC Tail Length (mm) 4.37 mm  
 PCB Locator No  
 PCB Retention None  
 PCB Thickness Recommended (in) 0.062 In  
 PCB Thickness Recommended (mm) 1.60 mm  
 Packaging Type Bag  
 Pitch - Mating Interface (in) 0.156 In  
 Pitch - Mating Interface (mm) 3.96 mm  
 Plating min: Mating (µin) 30  
 Plating min: Mating (µm) 0.75  
 Plating min: Termination (µin) 100  
 Plating min: Termination (µm) 2.5  
 Polarized to Mating Part Yes  
 Polarized to PCB No  
 Shrouded Partial  
 Stackable No  
 Temperature Range - Operating 0°C to +75°C  
 Termination Interface: Style Through Hole

**Electrical**

Current - Maximum per Contact 7A



*Series  
image - Reference only*

**EU RoHS**

**ELV and RoHS  
Compliant**  
**REACH SVHC  
Contains SVHC: No**  
**Halogen-Free  
Status**

**China RoHS**



**Not Reviewed**

**Need more information on product  
environmental compliance?**

Email [productcompliance@molex.com](mailto:productcompliance@molex.com)  
 For a multiple part number RoHS Certificate of Compliance, [click here](#)

Please visit the [Contact Us](#) section for any non-product compliance questions.

**Search Parts in this Series**

[41671Series](#)

**Mates With**

[3069 Crimp Housing](#), [2139 Crimp Housing](#),  
[6442 KK® Crimp Housing](#), [41695 Crimp Housing](#),  
[7674 IDT Assembly](#), [7675 IDT Connector](#),  
[41815 PCB Connector](#), [2145 PCB Connector](#),  
[3215 KK® PCB Connector](#)

Voltage - Maximum 250V

www.Datasheet.com

### **Solder Process Data**

Duration at Max. Process Temperature (seconds) 5  
Lead-free Process Capability Wave Capable (TH only)  
Max. Cycles at Max. Process Temperature 1  
Process Temperature max. C 235

### **Material Info**

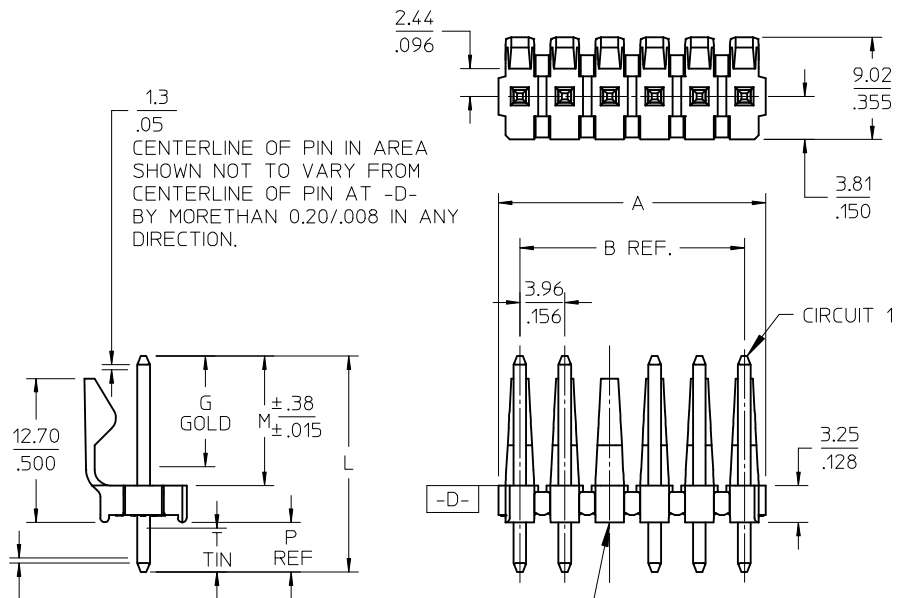
Old Part Number A-41671-C06A228

### **Reference - Drawing Numbers**

Product Specification PS-08-50  
Sales Drawing SD-41671-001

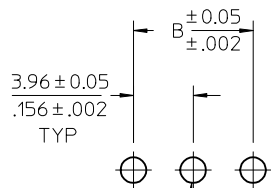
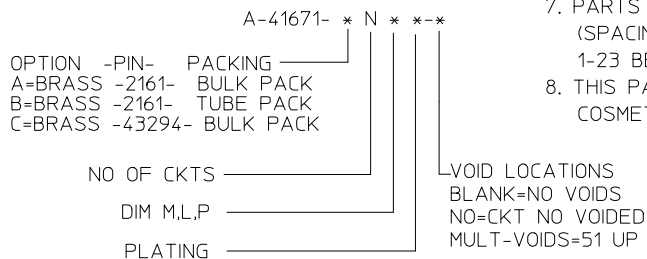
This document was generated on 04/19/2010

**PLEASE CHECK [WWW.MOLEX.COM](http://WWW.MOLEX.COM) FOR LATEST PART INFORMATION**



NOTES:

- MATERIAL: POLYESTER, 94V-0, MOLDED BLACK
- FINISH: PER ES-88
  - (102) OVERALL TIN: 0.00508/.000200 MIN.
  - OVERALL COPPER: 0.00254/.000100 MIN.
  - (222) OVERALL MATTE TIN: 0.00254/.000100 MIN.
  - OVERALL NICKEL: 0.00127/.000050 MIN.
  - (208) SELECT GOLD: 0.00038/.000015 MIN.
  - \*SELECT TIN: 0.00254/.000100 MIN.,
  - OVERALL NICKEL UNDERPLATE: 0.00127/.000050 MIN.
  - (228) SELECT GOLD: 0.00076/.000030 MIN.,
  - \*SELECT TIN: 0.00254/.000100 MIN.,
  - OVERALL NICKEL UNDERPLATE: 0.00127/.000050 MIN.
  - (501) OVERALL GOLD: 0.00051/.000020 MIN.
  - OVERALL NICKEL: 0.00076/.000030 MIN.
  - (503) OVERALL GOLD: 0.00076/.000030 MIN.
  - OVERALL NICKEL: 0.00127/.000050 MIN.
- THE PRIMARY SHIPPING CARTON WILL BE LABELED "COMPLIANT TO RoHS DIRECTIVE 2002/95/EC AND ELV ANNEX II OF DIRECTIVE 2000/53/EC". CARTONS WITHOUT THIS LABEL MAY CONTAIN PRODUCT WITH TIN-LEAD PLATING.
- PRODUCT SPECIFICATION: PS-08-50.
- PACKAGING INFO: SEE TABLE.
- SOLDERABILITY: PER SMES-152.
- PIN PUSH-OUT FORCE: PRIOR TO SOLDERING, 3 LB MIN. FORCE IN EITHER DIRECTION SHALL BE REQUIRED TO PUSH THE PIN OUT OF THE HEADER.
- PARTS ARE STACKABLE END TO END ON 3.96/.156 CENTERS. (SPACING TABS MUST BE REMOVED ON CIRCUIT SIZES 1-23 BEFORE PARTS ARE STACKABLE.
- THIS PART CONFORMS TO CLASS B REQUIREMENTS OF COSMETIC SPECIFICATION PS-45499-002.



| CKT | B              | A                          |
|-----|----------------|----------------------------|
| 2   | 3.96<br>.156   | 6.78/7.87<br>.267/.310     |
| 3   | 7.92<br>.312   | 10.74/11.84<br>.423/.466   |
| 4   | 11.89<br>.468  | 14.71/15.80<br>.579/.622   |
| 5   | 15.85<br>.624  | 18.67/19.76<br>.735/.778   |
| 6   | 19.81<br>.780  | 22.63/23.72<br>.891/.934   |
| 7   | 23.77<br>.936  | 26.59/27.69<br>1.047/1.090 |
| 8   | 27.74<br>1.092 | 30.56/31.65<br>1.203/1.246 |
| 9   | 31.70<br>1.248 | 34.52/35.61<br>1.359/1.402 |
| 10  | 35.66<br>1.404 | 38.48/39.57<br>1.515/1.558 |
| 11  | 39.62<br>1.560 | 42.44/43.54<br>1.671/1.714 |
| 12  | 43.59<br>1.716 | 46.41/47.50<br>1.827/1.870 |
| 13  | 47.55<br>1.872 | 50.37/51.46<br>1.983/2.026 |
| 14  | 51.51<br>2.028 | 54.33/55.42<br>2.139/2.182 |
| 15  | 55.47<br>2.184 | 58.29/59.39<br>2.295/2.338 |
| 16  | 59.44<br>2.340 | 62.26/63.35<br>2.451/2.494 |
| 17  | 63.40<br>2.496 | 66.22/67.31<br>2.607/2.650 |
| 18  | 67.36<br>2.652 | 70.18/71.27<br>2.763/2.806 |
| 19  | 71.32<br>2.808 | 74.14/75.23<br>2.919/2.962 |
| 20  | 75.29<br>2.964 | 78.11/79.20<br>3.075/3.118 |
| 21  | 79.25<br>3.120 | 82.07/83.16<br>3.231/3.274 |
| 22  | 83.21<br>3.276 | 86.03/87.12<br>3.387/3.430 |
| 23  | 87.17<br>3.432 | 89.94/91.08<br>3.541/3.586 |
| 24  | 91.14<br>3.588 | 93.85/95.00<br>3.695/3.740 |

www.DataSheet4U.com

PCB LAYOUT: COMPONENT SIDE  
RECOMMENDED PCB THICKNESS:  
1.57 ± .18 / .062 ± .007

|            |                     |            |                 |
|------------|---------------------|------------|-----------------|
| CHANGE PIN | EC NO: UCP2009-1378 | 2008/12/08 | QUALITY SYMBOLS |
|            | DRWN: MK IPPER      | 2008/12/08 |                 |
|            | CHKD: SSOUSEK       |            |                 |
|            | APPR: FSM TH        |            |                 |
|            | DESCRIPTION         |            |                 |
|            | REV                 |            |                 |

| GENERAL TOLERANCES (UNLESS SPECIFIED)                |               |
|--|---------------|
|  | mm INCH       |
| 4 PLACES   | ± --- ± ---   |
| 3 PLACES   | ± --- ± .010  |
| 2 PLACES   | ± 0.25 ± .015 |
| 1 PLACE  | ± 0.38 ± ---  |
| ANGULAR ± 1/2°                                       |               |
| DRAFT WHERE APPLICABLE MUST REMAIN WITHIN DIMENSIONS |               |

| DIMENSION STYLE |            |
|-----------------|------------|
| MM/IN           |            |
| DRAWN BY        | DATE       |
| JSCHAFFER       | 2004/04/05 |
| CHECKED BY      | DATE       |
| KSAMIEC         | 2004/04/05 |
| APPROVED BY     | DATE       |
| MARGULIS        | 2004/04/05 |
| MATERIAL NO.    |            |
| SEE CHART       |            |
| SIZE            |            |
| A               |            |

|  |              |                        |
|--|--------------|------------------------|
| SCALE  | DESIGN UNITS | THIRD ANGLE PROJECTION |
| 1.5:1  | INCH         |                        |
| TITLE  |              |                        |
| KK 156 HEADER ASSEMBLY<br>FRICTION LOCK STRAIGHT<br>BREAKAWAY  |              |                        |
| MOLEX INCORPORATED   |              |                        |
| DOCUMENT NO.   |              | SHEET NO.              |
| SD-41671-001   |              | 1 OF 8                 |
| THIS DRAWING CONTAINS INFORMATION THAT IS INCORPORATED AND SHOULD NOT BE USED WITHOUT WRITTEN PERMISSION |              |                        |

| Ckts                    | Material No | Engineer Number | Material No                 | Engineer Number | Material No                 | Engineer Number |
|-------------------------|-------------|-----------------|-----------------------------|-----------------|-----------------------------|-----------------|
| 2                       | 26-48-1025  | A-41671-A02A102 | 41671-0001                  | A-41671-C02A208 | 41671-0024                  | A-41671-C02A228 |
| 3                       | 26-48-1035  | A-41671-A03A102 | 41671-0002                  | A-41671-C03A208 | 41671-0025                  | A-41671-C03A228 |
| 4                       | 26-48-1045  | A-41671-A04A102 | 41671-0003                  | A-41671-C04A208 | 41671-0026                  | A-41671-C04A228 |
| 5                       | 26-48-1055  | A-41671-A05A102 | 41671-0004                  | A-41671-C05A208 | 41671-0027                  | A-41671-C05A228 |
| 6                       | 26-48-1065  | A-41671-A06A102 | 41671-0005                  | A-41671-C06A208 | 41671-0028                  | A-41671-C06A228 |
| 7                       | 26-48-1075  | A-41671-A07A102 | 41671-0006                  | A-41671-C07A208 | 41671-0029                  | A-41671-C07A228 |
| 8                       | 26-48-1085  | A-41671-A08A102 | 41671-0007                  | A-41671-C08A208 | 41671-0030                  | A-41671-C08A228 |
| 9                       | 26-48-1095  | A-41671-A09A102 | 41671-0008                  | A-41671-C09A208 | 41671-0031                  | A-41671-C09A228 |
| 10                      | 26-48-1105  | A-41671-A10A102 | 41671-0009                  | A-41671-C10A208 | 41671-0032                  | A-41671-C10A228 |
| 11                      | 26-48-1115  | A-41671-A11A102 | 41671-0010                  | A-41671-C11A208 | 41671-0033                  | A-41671-C11A228 |
| 12                      | 26-48-1125  | A-41671-A12A102 | 41671-0011                  | A-41671-C12A208 | 41671-0034                  | A-41671-C12A228 |
| 13                      | 26-48-1135  | A-41671-A13A102 | 41671-0012                  | A-41671-C13A208 | 41671-0035                  | A-41671-C13A228 |
| 14                      | 26-48-1145  | A-41671-A14A102 | 41671-0013                  | A-41671-C14A208 | 41671-0036                  | A-41671-C14A228 |
| 15                      | 26-48-1155  | A-41671-A15A102 | 41671-0014                  | A-41671-C15A208 | 41671-0037                  | A-41671-C15A228 |
| 16                      | 26-48-1165  | A-41671-A16A102 | 41671-0015                  | A-41671-C16A208 | 41671-0038                  | A-41671-C16A228 |
| 17                      | 26-48-1175  | A-41671-A17A102 | 41671-0016                  | A-41671-C17A208 | 41671-0039                  | A-41671-C17A228 |
| 18                      | 26-48-1185  | A-41671-A18A102 | 41671-0017                  | A-41671-C18A208 | 41671-0040                  | A-41671-C18A228 |
| 19                      | 26-48-1195  | A-41671-A19A102 | 41671-0018                  | A-41671-C19A208 | 41671-0041                  | A-41671-C19A228 |
| 20                      | 26-48-1205  | A-41671-A20A102 | 41671-0019                  | A-41671-C20A208 | 41671-0042                  | A-41671-C20A228 |
| 21                      | 26-48-1215  | A-41671-A21A102 | 41671-0020                  | A-41671-C21A208 | 41671-0043                  | A-41671-C21A228 |
| 22                      | 26-48-1225  | A-41671-A22A102 | 41671-0021                  | A-41671-C22A208 | 41671-0044                  | A-41671-C22A228 |
| 23                      | 26-48-1235  | A-41671-A23A102 | 41671-0022                  | A-41671-C23A208 | 41671-0045                  | A-41671-C23A228 |
| 24                      | 26-48-1245  | A-41671-A24A102 | 41671-0023                  | A-41671-C24A208 | 41671-0046                  | A-41671-C24A228 |
| STD TIN CATALOG PRODUCT |             |                 | STD 15 GOLD CATALOG PRODUCT |                 | STD 30 GOLD CATALOG PRODUCT |                 |

www.DataSheet4U.com

|  |  |  |                                      |
|--|--|--|--------------------------------------|
| <b>REV:</b><br><b>AJ</b>   | <b>ECR/ECN INFORMATION:</b><br><b>EC. NO. UCP2009-1378</b><br><b>DATE: 12/8/2008</b> | <b>TITLE:</b><br><b>KK .156 HEADER ASSEMBLY</b><br><b>FRICITION LOCK STRAIGHT</b><br><b>2-24 CKTS.</b> | <b>SHEET No.</b><br><b>- 2 -</b>     |
| <b>DOCUMENT NUMBER:</b><br><b>SD - 41671 - 001</b>                 |  | <b>CREATED / REVISED BY:</b><br><b>MKIPPER</b>   | <b>CHECKED BY:</b><br><b>SSOUSEK</b> |
| <b>APPROVED BY:</b><br><b>FSMITH</b><br><b>www.DataSheet4U.com</b> |  |  |                                      |

|              |                |
|--------------|----------------|
| Group No:    | A-41671-ANA501 |
| Pin No:      | 2161-1 (501)   |
| Plating:     | 501 GOLD       |
| Pin Length L | .750 / 19.05   |
| Mating M     | .450 / 11.43   |
| Gold Loc G   | OVERALL        |
| PC Tail P    | .172 / 4.37    |
| Tin Loc T    | NA             |
| Voided Ckts  | NONE           |
| Pack Per     | PK-41671-001   |

|              |                |
|--------------|----------------|
| Group No:    | A-41671-ANA503 |
| Pin No:      | 2161 – 1(503)  |
| Plating:     | 503 GOLD       |
| Pin Length L | .750 / 19.05   |
| Mating M     | .450 / 11.43   |
| Gold Loc G   | OVERALL        |
| PC Tail P    | .172 / 4.37    |
| Tin Loc T    | NA             |
| Voided Ckts  | NONE           |
| Pack Per     | PK-41671-001   |

|              |                |
|--------------|----------------|
| Group No:    | A-41671-AND102 |
| Pin No:      | 2161-56 (102)  |
| Plating:     | 102 TIN        |
| Pin Length L | .703 / 17.86   |
| Mating M     | .450 / 11.43   |
| Gold Loc G   | NA             |
| PC Tail P    | .125 / 3.18    |
| Tin Loc T    | OVERALL        |
| Voided Ckts  | NONE           |
| Pack Per     | PK-41671-001   |

|              |                |
|--------------|----------------|
| Group No:    | A-41671-ANB102 |
| Pin No:      | 2161-1 (102)   |
| Plating:     | 102 TIN        |
| Pin Length L | .750 / 19.05   |
| Mating M     | .523 / 13.28   |
| Gold Loc G   | NA             |
| PC Tail P    | .099 / 2.51    |
| Tin Loc T    | OVERALL        |
| Voided Ckts  | NONE           |
| Pack Per     | PK-41671-001   |

| Ckts | Material No | Engineer Number |
|------|-------------|-----------------|
| 2    | 26-48-2025  | A-41671-A02A501 |
| 3    | 26-48-2035  | A-41671-A03A501 |
| 4    | 26-48-2045  | A-41671-A04A501 |
| 5    | 26-48-2055  | A-41671-A05A501 |
| 6    | 26-48-2065  | A-41671-A06A501 |
| 7    | 26-48-2075  | A-41671-A07A501 |
| 8    | 26-48-2085  | A-41671-A08A501 |
| 9    | 26-48-2095  | A-41671-A09A501 |
| 10   | 26-48-2105  | A-41671-A10A501 |
| 11   | 26-48-2115  | A-41671-A11A501 |
| 12   | 26-48-2125  | A-41671-A12A501 |
| 13   | 26-48-2135  | A-41671-A13A501 |
| 14   | 26-48-2145  | A-41671-A14A501 |
| 15   | 26-48-2155  | A-41671-A15A501 |
| 16   | 26-48-2165  | A-41671-A16A501 |
| 17   | 26-48-2175  | A-41671-A17A501 |
| 18   | 26-48-2185  | A-41671-A18A501 |
| 19   | 26-48-2195  | A-41671-A19A501 |
| 20   | 26-48-2205  | A-41671-A20A501 |
| 21   | 26-48-2215  | A-41671-A21A501 |
| 22   | 26-48-2225  | A-41671-A22A501 |
| 23   | 26-48-2235  | A-41671-A23A501 |
| 24   | 26-48-2245  | A-41671-A24A501 |

| Material No | Engineer Number |
|-------------|-----------------|
| 26-48-9026  | A-41671-A02A503 |
| 41671-0047  | A-41671-A03A503 |
| 41671-0048  | A-41671-A04A503 |
| 26-48-9056  | A-41671-A05A503 |
| 41671-0049  | A-41671-A06A503 |
| 41671-0050  | A-41671-A07A503 |
| 41671-0051  | A-41671-A08A503 |
| 26-48-9096  | A-41671-A09A503 |
| 26-48-9106  | A-41671-A10A503 |
| 41671-0052  | A-41671-A11A503 |
| 26-48-9126  | A-41671-A12A503 |
| 41671-0053  | A-41671-A13A503 |
| 41671-0054  | A-41671-A14A503 |
| 41671-0055  | A-41671-A15A503 |
| 41671-0056  | A-41671-A16A503 |
| 41671-0057  | A-41671-A17A503 |
| 41671-0058  | A-41671-A18A503 |
| 41671-0059  | A-41671-A19A503 |
| 41671-0060  | A-41671-A20A503 |
| 41671-0061  | A-41671-A21A503 |
| 41671-0062  | A-41671-A22A503 |
| 41671-0063  | A-41671-A23A503 |
| 26-48-9246  | A-41671-A24A503 |

| Material No | Engineer Number |
|-------------|-----------------|
| 26-48-9023  | A-41671-A02D102 |
| 26-48-9033  | A-41671-A03D102 |
| 26-48-9043  | A-41671-A04D102 |
| 26-48-9053  | A-41671-A05D102 |
| 26-48-9063  | A-41671-A06D102 |
| 26-48-9073  | A-41671-A07D102 |
| 26-48-9083  | A-41671-A08D102 |
| 26-48-9093  | A-41671-A09D102 |
| 26-48-9103  | A-41671-A10D102 |
| 26-48-9113  | A-41671-A11D102 |
| 26-48-9123  | A-41671-A12D102 |
| 26-48-9133  | A-41671-A13D102 |
| 26-48-9143  | A-41671-A14D102 |
| 26-48-9153  | A-41671-A15D102 |
| 26-48-9163  | A-41671-A16D102 |
| 26-48-9173  | A-41671-A17D102 |
| 26-48-9183  | A-41671-A18D102 |
| 26-48-9193  | A-41671-A19D102 |
| 26-48-9203  | A-41671-A20D102 |
| 26-48-9213  | A-41671-A21D102 |
| 26-48-9223  | A-41671-A22D102 |
| 26-48-9233  | A-41671-A23D102 |
| 26-48-9243  | A-41671-A24D102 |

| Material No | Engineer Number |
|-------------|-----------------|
| 41671-0064  | A-41671-A02B102 |
| 41671-0065  | A-41671-A03B102 |
| 41671-0066  | A-41671-A04B102 |
| 41671-0067  | A-41671-A05B102 |
| 41671-0068  | A-41671-A06B102 |
| 41671-0069  | A-41671-A07B102 |
| 41671-0070  | A-41671-A08B102 |
| 26-48-6095  | A-41671-A09B102 |
| 41671-0071  | A-41671-A10B102 |
| 41671-0072  | A-41671-A11B102 |
| 41671-0073  | A-41671-A12B102 |
| 41671-0074  | A-41671-A13B102 |
| 41671-0075  | A-41671-A14B102 |
| 41671-0076  | A-41671-A15B102 |
| 41671-0077  | A-41671-A16B102 |
| 41671-0078  | A-41671-A17B102 |
| 41671-0079  | A-41671-A18B102 |
| 41671-0080  | A-41671-A19B102 |
| 41671-0081  | A-41671-A20B102 |
| 41671-0082  | A-41671-A21B102 |
| 41671-0083  | A-41671-A22B102 |
| 41671-0084  | A-41671-A23B102 |
| 26-48-6245  | A-41671-A24B102 |

www.DataSheets4U.com

|   |   |   |  |
|---|---|---|--|
| REV:<br><b>AJ</b>                           | ECR/ECN INFORMATION:<br>EC. NO. UCP2009-1378<br>DATE: 12/8/2008 | TITLE:<br>KK .156 HEADER ASSEMBLY<br>FRICTION LOCK STRAIGHT<br>2-24 CKTS. | SHEET No.<br><b>- 3 -</b>                            |
| DOCUMENT NUMBER:<br><b>SD – 41671 - 001</b> | CREATED / REVISED BY:<br><b>MKIPPER</b>                         | CHECKED BY:<br><b>SSOUSEK</b>   | APPROVED BY:<br><b>FSMITH</b><br>www.DataSheet4U.com |

|              |                |
|--------------|----------------|
| Group No:    | A-41671-ANF102 |
| Pin No:      | 2161-24 (102)  |
| Plating:     | 102 TIN        |
| Pin Length L | .800 / 20.32   |
| Mating M     | .480 / 12.19   |
| Gold Loc G   | NA             |
| PC Tail P    | .192 / 4.88    |
| Tin Loc T    | OVERALL        |
| Voided Ckts  | NONE           |
| Pack Per     | PK-41671-001   |

|              |                |
|--------------|----------------|
| Group No:    | A-41671-ANB501 |
| Pin No:      | 2161-1 (501)   |
| Plating:     | 501 GOLD       |
| Pin Length L | .750 / 19.05   |
| Mating M     | .523 / 13.28   |
| Gold Loc G   | OVERALL        |
| PC Tail P    | .099 / 2.51    |
| Tin Loc T    | NA             |
| Voided Ckts  | NONE           |
| Pack Per     | PK-41671-001   |

|              |                |
|--------------|----------------|
| Group No:    | A-41671-ANF501 |
| Pin No:      | 2161-24 (501)  |
| Plating:     | 501 GOLD       |
| Pin Length L | .800 / 20.32   |
| Mating M     | .480 / 12.19   |
| Gold Loc G   | OVERALL        |
| PC Tail P    | .192 / 4.88    |
| Tin Loc T    | NA             |
| Voided Ckts  | NONE           |
| Pack Per     | PK-41671-001   |

|              |                |
|--------------|----------------|
| Group No:    | A-41671-ANN102 |
| Pin No:      | 2161-19 (102)  |
| Plating:     | 102 TIN        |
| Pin Length L | 1.032 / 26.21  |
| Mating M     | .450 / 11.43   |
| Gold Loc G   | NA             |
| PC Tail P    | .454 / 11.53   |
| Tin Loc T    | OVERALL        |
| Voided Ckts  | NONE           |
| Pack Per     | PK-41671-001   |

| Ckts | Material No | Engineer Number |
|------|-------------|-----------------|
| 2    | 26-48-4026  | A-41671-A02F102 |
| 3    | 26-48-4036  | A-41671-A03F102 |
| 4    | 26-48-4046  | A-41671-A04F102 |
| 5    | 26-48-4056  | A-41671-A05F102 |
| 6    | 26-48-4066  | A-41671-A06F102 |
| 7    | 26-48-4076  | A-41671-A07F102 |
| 8    | 26-48-4086  | A-41671-A08F102 |
| 9    | 26-48-4096  | A-41671-A09F102 |
| 10   | 26-48-4106  | A-41671-A10F102 |
| 11   | 26-48-4116  | A-41671-A11F102 |
| 12   | 26-48-4126  | A-41671-A12F102 |
| 13   | 26-48-4136  | A-41671-A13F102 |
| 14   | 26-48-4146  | A-41671-A14F102 |
| 15   | 26-48-4156  | A-41671-A15F102 |
| 16   | 26-48-4166  | A-41671-A16F102 |
| 17   | 26-48-4176  | A-41671-A17F102 |
| 18   | 26-48-4186  | A-41671-A18F102 |
| 19   | 26-48-4196  | A-41671-A19F102 |
| 20   | 26-48-4206  | A-41671-A20F102 |
| 21   | 26-48-4216  | A-41671-A21F102 |
| 22   | 26-48-4226  | A-41671-A22F102 |
| 23   | 26-48-4236  | A-41671-A23F102 |
| 24   | 26-48-4246  | A-41671-A24F102 |

| Material No | Engineer Number |
|-------------|-----------------|
| 26-48-2027  | A-41671-A02B501 |
| 26-48-2037  | A-41671-A03B501 |
| 26-48-2047  | A-41671-A04B501 |
| 26-48-2057  | A-41671-A05B501 |
| 26-48-2067  | A-41671-A06B501 |
| 26-48-2077  | A-41671-A07B501 |
| 26-48-2087  | A-41671-A08B501 |
| 26-48-2097  | A-41671-A09B501 |
| 26-48-2107  | A-41671-A10B501 |
| 26-48-2117  | A-41671-A11B501 |
| 26-48-2127  | A-41671-A12B501 |
| 26-48-2137  | A-41671-A13B501 |
| 26-48-2147  | A-41671-A14B501 |
| 26-48-2157  | A-41671-A15B501 |
| 26-48-2167  | A-41671-A16B501 |
| 26-48-2177  | A-41671-A17B501 |
| 26-48-2187  | A-41671-A18B501 |
| 26-48-2197  | A-41671-A19B501 |
| 26-48-2207  | A-41671-A20B501 |
| 26-48-2217  | A-41671-A21B501 |
| 26-48-2227  | A-41671-A22B501 |
| 26-48-2237  | A-41671-A23B501 |
| 26-48-2247  | A-41671-A24B501 |

| Material No | Engineer Number |
|-------------|-----------------|
| 41671-0250  | A-41671-A02F501 |
| 41671-0350  | A-41671-A03F501 |
| 41671-0450  | A-41671-A04F501 |
| 41671-0550  | A-41671-A05F501 |
| 41671-0650  | A-41671-A06F501 |
| 41671-0750  | A-41671-A07F501 |
| 41671-0850  | A-41671-A08F501 |
| 41671-0950  | A-41671-A09F501 |
| 41671-1050  | A-41671-A10F501 |
| 41671-1150  | A-41671-A11F501 |
| 41671-1250  | A-41671-A12F501 |
| 41671-1350  | A-41671-A13F501 |
| 41671-1450  | A-41671-A14F501 |
| 41671-1550  | A-41671-A15F501 |
| 41671-1650  | A-41671-A16F501 |
| 41671-1750  | A-41671-A17F501 |
| 41671-1850  | A-41671-A18F501 |
| 41671-1950  | A-41671-A19F501 |
| 41671-2050  | A-41671-A20F501 |
| 41671-2150  | A-41671-A21F501 |
| 41671-2250  | A-41671-A22F501 |
| 41671-2350  | A-41671-A23F501 |
| 41671-2450  | A-41671-A24F501 |

| Material No | Engineer Number |
|-------------|-----------------|
|             | A-41671-A02N102 |
|             | A-41671-A03N102 |
|             | A-41671-A04N102 |
|             | A-41671-A05N102 |
|             | A-41671-A06N102 |
|             | A-41671-A07N102 |
|             | A-41671-A08N102 |
|             | A-41671-A09N102 |
|             | A-41671-A10N102 |
|             | A-41671-A11N102 |
|             | A-41671-A12N102 |
|             | A-41671-A13N102 |
|             | A-41671-A14N102 |
|             | A-41671-A15N102 |
|             | A-41671-A16N102 |
|             | A-41671-A17N102 |
|             | A-41671-A18N102 |
|             | A-41671-A19N102 |
|             | A-41671-A20N102 |
|             | A-41671-A21N102 |
|             | A-41671-A22N102 |
|             | A-41671-A23N102 |
| 26-48-8247  | A-41671-A24N102 |

www.DataSheets4U.com

|  |  |   |                                      |
|--|--|---|--------------------------------------|
| <u>REV:</u><br><b>AJ</b>                           | <u>ECR/ECN INFORMATION:</u><br><b>EC. NO. UCP2009-1378</b><br><b>DATE: 12/8/2008</b> | <u>TITLE:</u><br><b>KK .156 HEADER ASSEMBLY<br/>FRICTION LOCK STRAIGHT<br/>2-24 CKTS.</b> | <u>SHEET No.</u><br><b>- 4 -</b>     |
| <u>DOCUMENT NUMBER:</u><br><b>SD - 41671 - 001</b> |  | <u>CREATED / REVISED BY:</u><br><b>MKIPPER</b>  | <u>CHECKED BY:</u><br><b>SSOUSEK</b> |
|  |  | <u>APPROVED BY:</u><br><b>FSMITH</b><br>www.DataSheet4U.com                               |                                      |

|              |                |
|--------------|----------------|
| Group No:    | A-41671-CNP228 |
| Pin No:      | 43294-0282     |
| Plating:     | 228 30 GOLD    |
| Pin Length L | .800 / 20.32   |
| Mating M     | .523 / 13.28   |
| Gold Loc G   | .350 / 8.89    |
| PC Tail P    | .149 / 3.78    |
| Tin Loc T    | .200 / 5.08    |
| Voided Ckts  | NONE           |
| Pack Per     | PK-41671-001   |

|              |                |
|--------------|----------------|
| Group No:    | A-41671-CNR208 |
| Pin No:      | 43294-0344     |
| Plating:     | 208 15 GOLD    |
| Pin Length L | .870 / 22.10   |
| Mating M     | .450 / 11.43   |
| Gold Loc G   | .400 / 10.16   |
| PC Tail P    | .292 / 7.42    |
| Tin Loc T    | .200 / 5.08    |
| Voided Ckts  | NONE           |
| Pack Per     | PK-41671-001   |

|              |                |
|--------------|----------------|
| Group No:    | A-41671-ANT102 |
| Pin No:      | 2161-37 (102)  |
| Plating:     | 102 TIN        |
| Pin Length L | 1.100 / 27.94  |
| Mating M     | .486 / 12.34   |
| Gold Loc G   | NA             |
| PC Tail P    | .486 / 12.34   |
| Tin Loc T    | OVERALL        |
| Voided Ckts  | NONE           |
| Pack Per     | PK-41671-001   |

|              |                |
|--------------|----------------|
| Group No:    | A-41671-ANA122 |
| Pin No:      | 2161-1 (122)   |
| Plating:     | 122 TIN        |
| Pin Length L | .750 / 19.05   |
| Mating M     | .450 / 11.43   |
| Gold Loc G   | NA             |
| PC Tail P    | .172 / 4.37    |
| Tin Loc T    | OVERALL        |
| Voided Ckts  | NONE           |
| Pack Per     | PK-41671-001   |

| Ckts | Material No | Engineer Number |
|------|-------------|-----------------|
| 2    | 41671-2451  | A-41671-C02P228 |
| 3    | 41671-2452  | A-41671-C03P228 |
| 4    | 41671-2453  | A-41671-C04P228 |
| 5    | 41671-2454  | A-41671-C05P228 |
| 6    | 41671-2455  | A-41671-C06P228 |
| 7    | 41671-2456  | A-41671-C07P228 |
| 8    | 41671-2457  | A-41671-C08P228 |
| 9    | 41671-2458  | A-41671-C09P228 |
| 10   | 41671-2459  | A-41671-C10P228 |
| 11   | 41671-2460  | A-41671-C11P228 |
| 12   | 41671-2461  | A-41671-C12P228 |
| 13   | 41671-2462  | A-41671-C13P228 |
| 14   | 41671-2463  | A-41671-C14P228 |
| 15   | 41671-2464  | A-41671-C15P228 |
| 16   | 41671-2465  | A-41671-C16P228 |
| 17   | 41671-2466  | A-41671-C17P228 |
| 18   | 41671-2467  | A-41671-C18P228 |
| 19   | 41671-2468  | A-41671-C19P228 |
| 20   | 41671-2469  | A-41671-C20P228 |
| 21   | 41671-2470  | A-41671-C21P228 |
| 22   | 41671-2471  | A-41671-C22P228 |
| 23   | 41671-2472  | A-41671-C23P228 |
| 24   | 41671-2473  | A-41671-C24P228 |

| Material No | Engineer Number |
|-------------|-----------------|
| 41671-2474  | A-41671-C02R208 |
| 41671-2475  | A-41671-C03R208 |
| 41671-2476  | A-41671-C04R208 |
| 41671-2477  | A-41671-C05R208 |
| 41671-2478  | A-41671-C06R208 |
| 41671-2479  | A-41671-C07R208 |
| 41671-2480  | A-41671-C08R208 |
| 41671-2481  | A-41671-C09R208 |
| 41671-2482  | A-41671-C10R208 |
| 41671-2483  | A-41671-C11R208 |
| 41671-2484  | A-41671-C12R208 |
| 41671-2485  | A-41671-C13R208 |
| 41671-2486  | A-41671-C14R208 |
| 41671-2487  | A-41671-C15R208 |
| 41671-2488  | A-41671-C16R208 |
| 41671-2489  | A-41671-C17R208 |
| 41671-2490  | A-41671-C18R208 |
| 41671-2491  | A-41671-C19R208 |
| 41671-2492  | A-41671-C20R208 |
| 41671-2493  | A-41671-C21R208 |
| 41671-2494  | A-41671-C22R208 |
| 41671-2495  | A-41671-C23R208 |
| 41671-2496  | A-41671-C24R208 |

| Material No | Engineer Number |
|-------------|-----------------|
| 41671-3400  | A-41671-A02T102 |
| 41671-3401  | A-41671-A03T102 |
| 41671-3402  | A-41671-A04T102 |
| 41671-3403  | A-41671-A05T102 |
| 41671-3404  | A-41671-A06T102 |
| 41671-3405  | A-41671-A07T102 |
| 41671-3406  | A-41671-A08T102 |
| 41671-3407  | A-41671-A09T102 |
| 41671-3408  | A-41671-A10T102 |
| 41671-3409  | A-41671-A11T102 |
| 41671-3410  | A-41671-A12T102 |
| 41671-3411  | A-41671-A13T102 |
| 41671-3412  | A-41671-A14T102 |
| 41671-3413  | A-41671-A15T102 |
| 41671-3414  | A-41671-A16T102 |
| 41671-3415  | A-41671-A17T102 |
| 41671-3416  | A-41671-A18T102 |
| 41671-3417  | A-41671-A19T102 |
| 41671-3418  | A-41671-A20T102 |
| 41671-3419  | A-41671-A21T102 |
| 41671-3420  | A-41671-A22T102 |
| 41671-3421  | A-41671-A23T102 |
| 41671-3422  | A-41671-A24T102 |

| Material No | Engineer Number |
|-------------|-----------------|
| 41671-3423  | A-41671-A02A122 |
| 41671-3424  | A-41671-A03A122 |
| 41671-3425  | A-41671-A04A122 |
| 41671-3426  | A-41671-A05A122 |
| 41671-3427  | A-41671-A06A122 |
| 41671-3428  | A-41671-A07A122 |
| 41671-3429  | A-41671-A08A122 |
| 41671-3430  | A-41671-A09A122 |
| 41671-3431  | A-41671-A10A122 |
| 41671-3432  | A-41671-A11A122 |
| 41671-3433  | A-41671-A12A122 |
| 41671-3434  | A-41671-A13A122 |
| 41671-3435  | A-41671-A14A122 |
| 41671-3436  | A-41671-A15A122 |
| 41671-3437  | A-41671-A16A122 |
| 41671-3438  | A-41671-A17A122 |
| 41671-3439  | A-41671-A18A122 |
| 41671-3440  | A-41671-A19A122 |
| 41671-3441  | A-41671-A20A122 |
| 41671-3442  | A-41671-A21A122 |
| 41671-3443  | A-41671-A22A122 |
| 41671-3444  | A-41671-A23A122 |
| 41671-3445  | A-41671-A24A122 |

www.DataSheets4U.com

|  |  |  |                                      |
|--|--|--|--------------------------------------|
| <u>REV:</u><br><b>AJ</b>                           | <u>ECR/ECN INFORMATION:</u><br><b>EC. NO. UCP2009-1378</b><br><b>DATE: 12/8/2008</b> | <u>TITLE:</u><br><b>KK .156 HEADER ASSEMBLY<br/>FRICTION LOCK STRAIGHT<br/>2-24 CKTS.</b>            | <u>SHEET No.</u><br><b>- 5 -</b>     |
| <u>DOCUMENT NUMBER:</u><br><b>SD - 41671 - 001</b> |  | <u>CREATED / REVISED BY:</u><br><b>MKIPPER</b>   | <u>CHECKED BY:</u><br><b>SSOUSEK</b> |
|  |  | <u>APPROVED BY:</u><br><b>FSMITH</b><br><a href="http://www.DataSheet4U.com">www.DataSheet4U.com</a> |                                      |







