

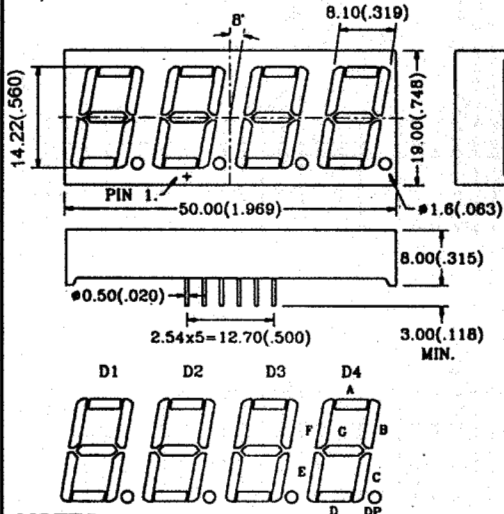
C/A-564X series ...

14.22mm(0.56inch) FOUR DIGITS DISPLAY

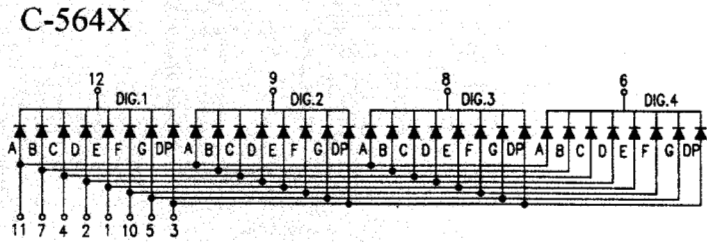
MAIN FEATURES :

- ⊙ 14.22mm(0.56inch) HIGH CHARACTER
- ⊙ EXCELLENT CHARACTER APPERANCE
- ⊙ COMMON CATHODE AND COMMON ANODE
- ⊙ I.C. COMPATABLE
- ⊙ LOW POWER CONSUMPTION

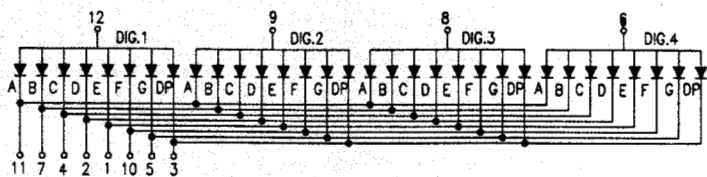
◆ PACKAGE DIMENSIONS



◆ PIN CONNECTION AND INTERNAL CIRCUIT



A-564X



NOTES:

1. All Dimension are in millimeter(inches).
2. Tolerance is $\pm 0.25\text{mm}(0.010\text{'})$ unless otherwise specified.

◆ SELECTION GUIDE AND APPLICATION INFORMATION (RATINGS AT 25°C AMBIENT)

Part No.	Remark 1 Selection of Sur / Seg Color	Chip Raw Material	C.C. Emitted or C.A.	Wave Length λ	Absolute Maximum Ratings				Electro-Optical Characteristics					Re- mark 2	
					Δ	Pd	If	If (Peak)	Vf(V) Min.	Typ.	Max.	If (Rec)	Iv (μ cd) Min.		Typ.
C-564R	GW,BW,BR,RR	GaAsP	Red	655	40	110	40	200	1.5	1.7	2.0	10~20	200	500	
C-564H	GW,BW,BR,RR	GaP	Bright Red	700	90	45	15	50	1.7	2.1	2.8	5~10	300	650	
C-564E	GW,BW,BR,RR	GaAsP/GaP	Hi. effi Red	635	45	100	30	160	1.7	2.0	2.8	10~20	750	2000	
C-564G	GW,BW,GGn,BGn	GaP	Green	565	30	100	30	160	1.7	2.1	2.8	10~20	750	2000	
C-564Y	GW,BW,GY,BY	GaAsP/GaP	Yellow	585	30	100	30	160	1.7	2.1	2.8	10~20	700	1600	
C-564I	GW,BW,BR,RR	GaAlAs	Hi. effi Red	625	20	60	20	160	1.6	1.8	2.1	10~20	2000	6000	
C-564SR	GW,BW,BR,RR	GaAlAs	Super Red	660	20	60	20	160	1.6	1.8	2.1	10~20	5600	21000	
A-564R	GW,BW,BR,RR	GaAsP	Red	655	40	110	40	200	1.5	1.7	2.0	10~20	200	500	
A-564H	GW,BW,BR,RR	GaP	Bright Red	700	90	45	15	50	1.7	2.1	2.8	5~10	300	650	
A-564E	GW,BW,BR,RR	GaAsP/GaP	Hi. effi Red	635	45	100	30	160	1.7	2.0	2.8	10~20	750	2000	
A-564G	GW,BW,GGn,BGn	GaP	Green	565	30	100	30	160	1.7	2.1	2.8	10~20	750	2000	
A-564Y	GW,BW,GY,BY	GaAsP/GaP	Yellow	585	30	100	30	160	1.7	2.1	2.8	10~20	700	1600	
A-564I	GW,BW,BR,RR	GaAlAs	Hi. effi Red	625	20	60	20	160	1.6	1.8	2.1	10~20	2000	6000	
A-564SR	GW,BW,BR,RR	GaAlAs	Super Red	660	20	60	20	160	1.6	1.8	2.1	10~20	5600	21000	

Remark 1 : Selection of Surface color & Segment color

- GW : Grey surface & White segment
- BW : Black surface & White segment
- BR : Black surface & Red segment
- RR : Red surface & Red segment
- GGn : Grey surface & Green segment
- BGn : Black surface & Green segment
- GY : Grey surface & Yellow segment
- BY : Black surface & Yellow segment

*****Please indicate Surface Color & Segment Color when place order or request samples. *****

For example : C-564G BGn is 0.56 inch Four digits display with Black Surface & Green Segment.

Normally, GW (Grey surface & White segment) is standard product.

◆ ABSOLUTE MAXIMUM RATING: (Ta=25°C)

Reverse Voltage	: 5 Volt
Reverse Current(Vr = 5V)	: 10 μ A
Operating Temperature Range	: -40°C to +85°C
Storage Temperature Range	: -40°C to +100°C
Lead Soldering Temperature	: 260°C for 5 Seconds
(1.6mm(1/16inch) from body)	

◆ ELECTRO-OPTICAL CHARACTERISTICS: (Ta=25°C)

Para meter Description	Symbol	Unit
Spectral Line half-Width	$\Delta \lambda$	nm
Power Dissipation	Pd	mW
Peak Forward Current (Duty 1/10,@KHz)	If(Peak)	mA
Recommended Operation Current	If(Rec)	mA
Average Luminous intensity (If = 10mA)	Iv	mcd