



() Preliminary Specification

(V) Final Specification

Module	15" XGA TFT-LCD Semi-Module
Model Name	A150XN01 V1- W02300508

Customer	Date
_____	_____
Approved by	
_____	_____
<p>Note: This Specification is subject to change without notice.</p>	

Checked & Approved by	Date
<i>JC Fan</i>	08/17/2009
Prepared by	Date
<i>Joyce Kuo</i>	08/17/2009
<p>Audio-Video Display Business Unit / AU Optronics corporation</p>	

AUO Confidential For Eric Internal Use Only / 2009/10

Contents

1. Handling Precautions	5
2. General Description	6
2.1 Display Characteristics	6
3. Functional Block Diagram.....	9
4. Absolute Maximum Ratings.....	10
4.1 Absolute Ratings of TFT LCD Module	10
4.2 Absolute Ratings of Environment	10
5. Electrical characteristics	11
5.1 TFT LCD Module	11
6. Signal Characteristic	13
6.1 Pixel Format Image	13
6.2 The Input Data Format	13
6.4 Interface Timing.....	16
6.5 Color Input Data Reference	18
6.6 Power ON/OFF Sequence.....	19
7. Connector & Pin Assignment	20
7.1 TFT LCD Module	20
8. Reliability Test.....	21
9. Outline Drawing.....	22
10. Packing Form.....	23
11. Shipping Label.....	24
11.1. Lot Definition of Product (Product Label)	24
12. Carton Label	25
Appendix	26

AUO Confidential For Eric Internal Use Only / 2009/10/10

Record of Revision

Version and Date	Page	Old description	New Description	Remark
0.0 2008/03/01	All	First Draft	All	
0.1 2008/08/22	5	Power consumption, PDD: 2.5	Power consumption, PDD: 1.98	
	11			
	20	Connector: DF14A-20P-1.25H(56)	Connector: DF19G-20P-1H(56)	
	22	Outline Drawing	Updated	
0.1 2008/09/12	1	A150XN01 V1	A150XN01 V1 : W02300508	
	5	Power consumption, PDD: 2.5	Power consumption, PDD: 1.98	
	6	Optical Equipment	Optical Equipment: BM-5A.	
	9	4.2, 4.3	Removed	
	10	Power SPEC	Updated	
	14	Signal Description	Add suggest LVDS transmitter and update connector	
	17	---	Add note for grey-level	
	19	Connector: DF14A-20P-1.25H(56)	Connector: DF19G-20P-1H(56)	
	20	ESD remark	Add Note 3	
	21	Outline Drawing	Updated	
0.2 2008/12/15	9	4.2 Absolute Ratings of Environment	Addad	
	23	Shipping label	Add year/month discription	
0.3 2009/03/06	6	2.2 Optical Characteristics	Add Min. an Max. value	
	9	4.2 Absolute Ratings of Environment	Updated	
	10	Measuring condition diagram update.	Updated	
	--	Vin -> VDD	Updated	
	11	VICM=1.2V	VICM=1.25V	
	11	VCM -> VICM	Typing error updated.	
	14	Pin 18 description update	Updated	
24	12. Carton label	Added		
0.4 2009/07/01	6	Tolerance of the white chromaticity	Decreased	
		Temp.-humidity curve	Updated	
	10	IDD unit	[mA]	
	20	Note 3	Added	
	21	Outline Drawing	Updated	
24	Carton label	Updated		
0.5 2009/07/31	20	Note 3	Remove the description of metal frame	
	25	Appendix	Added	



Product Specification
AU OPTRONICS CORPORATION

A150XN01 V1

0.6	2009/0817	22	Outline Drawing	Updated	

AUO Confidential For Eric Internal Use Only / 2009/9/10

1. Handling Precautions

- 1) Since front polarizer is easily damaged, pay attention not to scratch it.
- 2) Be sure to turn off power supply when inserting or disconnecting from input connector.
- 3) Wipe off water drop immediately. Long contact with water may cause discoloration or spots.
- 4) When the panel surface is soiled, wipe it with absorbent cotton or other soft cloth.
- 5) Since the panel is made of glass, it may break or crack if dropped or bumped on hard surface.
- 6) Since CMOS LSI is used in this module, take care of static electricity and insure human earth when handling.
- 7) Do not open or modify the Module Assembly.
- 8) At the insertion or removal of the Signal Interface Connector, be sure not to rotate nor tilt the Interface Connector of the TFT Module.
- 9) After installation of the TFT Module into an enclosure, do not twist nor bend the TFT Module even momentary. At designing the enclosure, it should be taken into consideration that no bending/twisting forces are applied to the TFT Module from outside. Otherwise the TFT Module may be damaged.

AUO Confidential For Eric Internal Use Only / 2009/9/10

2. General Description

This specification applies to the 15 inch Color TFT-LCD Semi-Module A150XN01 V1

The display supports the XGA (1024(H) x 768(V)) screen format and 16.2M colors. All input signals are 1 Channel LVDS interface compatible.

This module does not contain the backlight.

2.1 Display Characteristics

The following items are characteristics summary on the table under 25 °C condition:

Items	Unit	Specifications
Active Area	[mm]	304.128 (H) x 228.096
Pixels H x V		1024(x3) x 768
Pixel Pitch	[mm]	0.297 (per one triad) x 0.297
Pixel Arrangement		R.G.B. Vertical Stripe
Display Mode		TN mode, Normally White
Cell Transmittance	[%]	(8.8)
Optical ResponseTime	[msec]	12 (Typ, on/off)
Nominal Input Voltage VDD	[Volt]	+3.3 (Typ)
Power Consumption(Black Pattern)	[Watt]	1.98 (Typ)
Weight	[Grams]	285.5 (Typ)
Physical Size (H x V x D)	[mm]	316.23(W) x 242.55(H) x 1.69(D) (Typ)
Electrical Interface		one Channel LVDS
Surface Treatment		Without upper pol.
Support Colors		16.2M colors (RGB 6-bits+FRC)
RoHS Compliance		RoHS Compliance

AUO Confidential For Eric Internal Use Only

2.2 Optical Characteristics

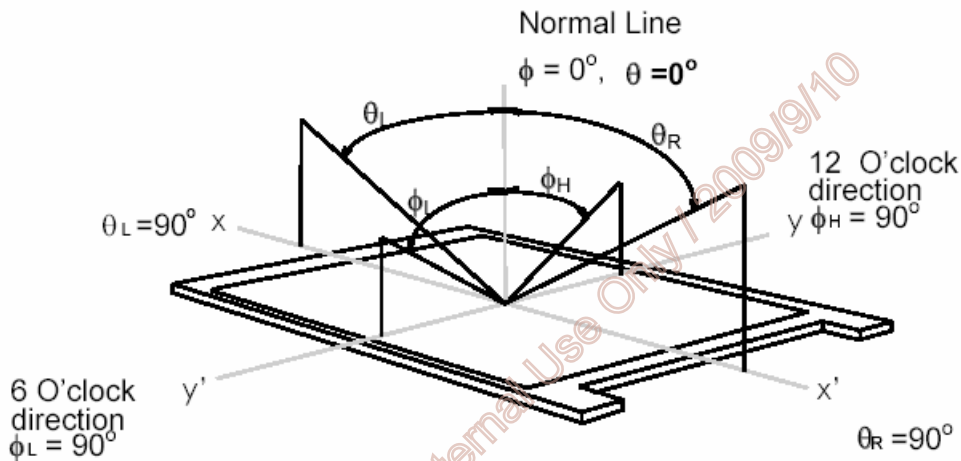
The optical characteristics are measured under stable conditions at 25°C (Room Temperature):

Item	Unit	Conditions	Min.	Typ.	Max.	Note
Optical Response Time	[msec]	Rising + Falling		12	17	3
Color / Chromaticity Coordinates (CIE 1931)		White x	0.28	0.310	0.34	2
		White y	0.30	0.330	0.36	
Cell Transmittance (At CCFL= mA)	[%]		8.7	9.7	-	2

Optical Equipment: BM-5A.

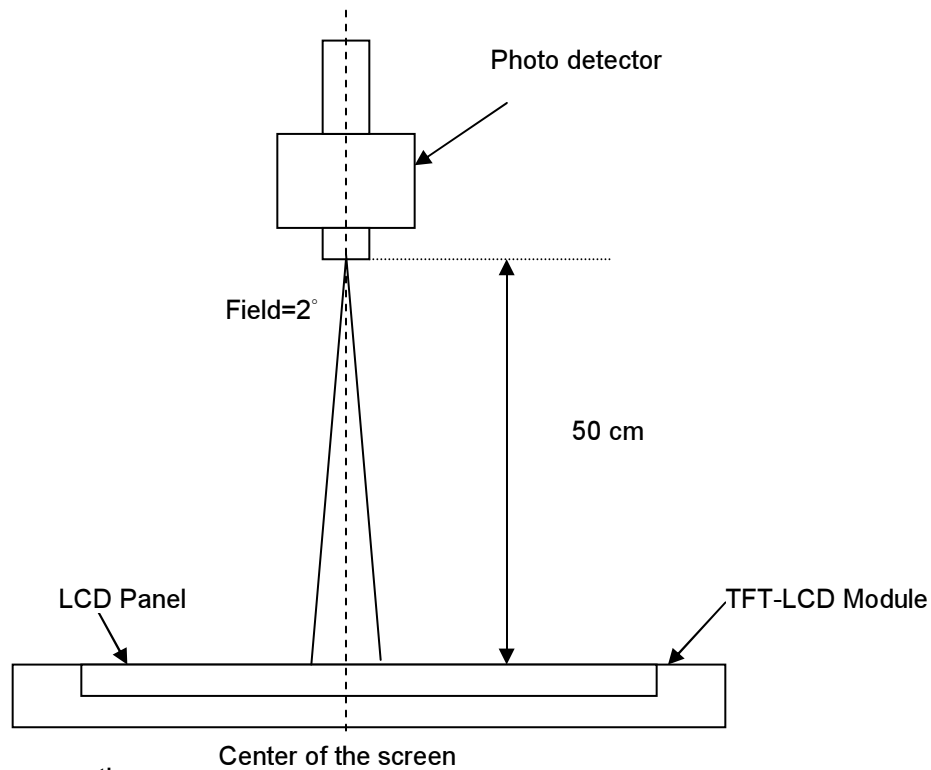
Note 1: Definition of viewing angle

Viewing angle is the measurement of contrast ratio ≥ 10 , at the screen center, over a 180° horizontal and 180° vertical range (off-normal viewing angles). The 180° viewing angle range is broken down as follows; 90° (θ) horizontal left and right and 90° (ϕ) vertical, high (up) and low (down). The measurement direction is typically perpendicular to the display surface with the screen rotated about its center to develop the desired measurement viewing angle.



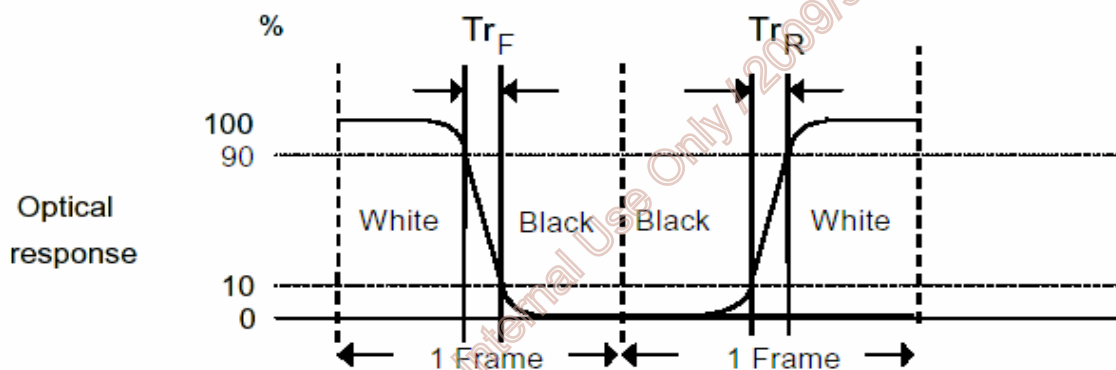
Note 2: Measurement method

The LCD module should be stabilized at given temperature for 30 minutes to avoid abrupt temperature change during measuring. In order to stabilize the luminance, the measurement should be executed after lighting Backlight for 30 minutes in a stable, windless and dark room. Based on backlight chromaticity (Wx:0.30, Wy:0.31), backlight luminance 3600nit.



Note 3: Definition of response time:

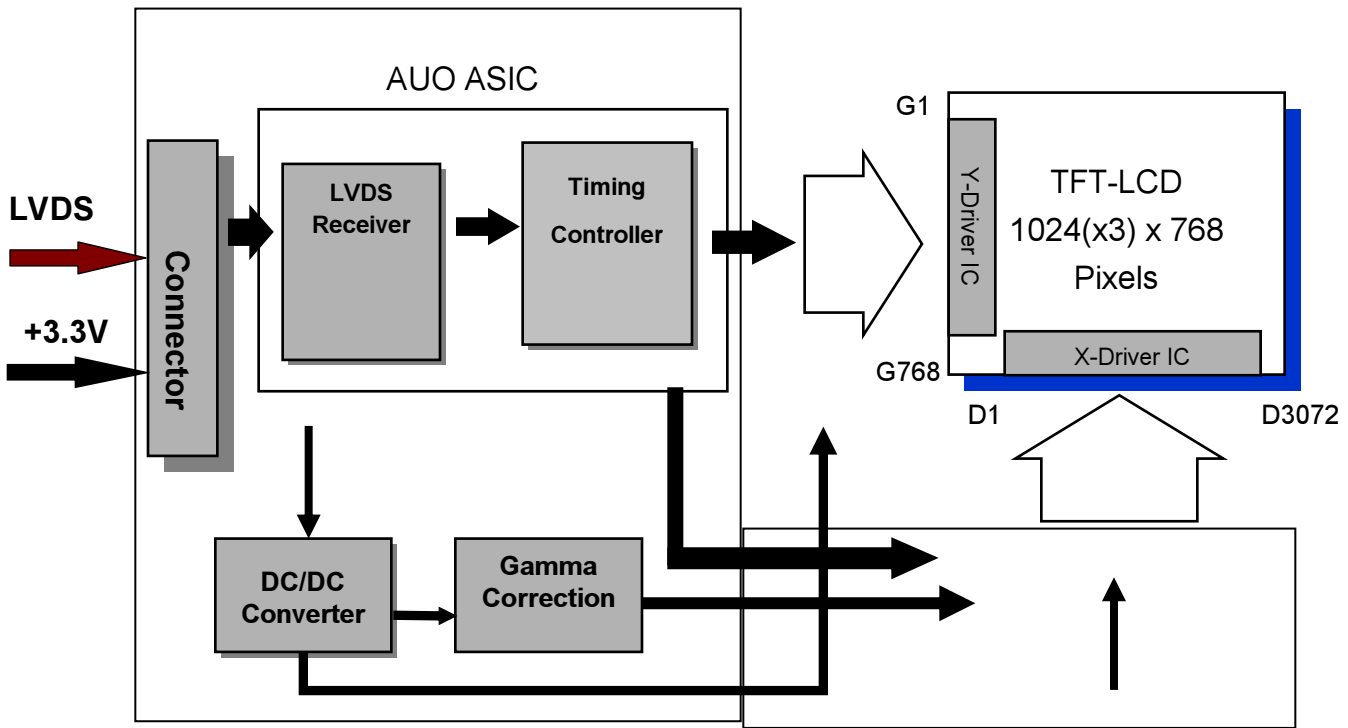
The output signals of photo detector are measured when the input signals are changed from "Full Black" to "Full White" (rising time), and from "Full White" to "Full Black" (falling time), respectively. The response time is interval between the 10% and 90% of amplitudes. Please refer to the figure as below.



AUO Confidential For Eric Internal Use Only 120919/10

3. Functional Block Diagram

The following diagram shows the functional block of the 15.0 inches wide Color TFT-LCD Module:



I/F + X-PCB

AUO Confidential For Eric Internal Use Only / 2009/9/10

4. Absolute Maximum Ratings

Absolute maximum ratings of the module are as follows:

4.1 Absolute Ratings of TFT LCD Module

Item	Symbol	Min.	Max.	Unit	Conditions
Logic/LCD Drive Voltage	VDD	-0.3	+4.0	[Volt]	Note 1,2

Note 1: With in $T_a = 25^\circ\text{C}$

Note 2: Permanent damage to the device may occur if exceed maximum values

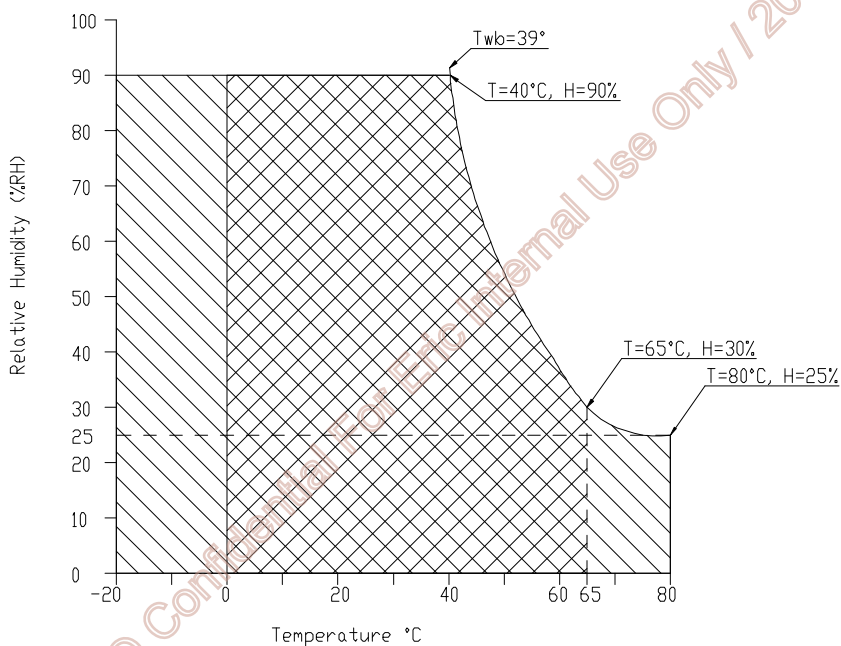
4.2 Absolute Ratings of Environment

Item	Symbol	Min.	Max.	Unit	Conditions
Operating Temperature	TOP	0	+65	[°C]	Note 3
Operating Humidity	HOP	8	90	[%RH]	
Storage Temperature	TST	-20	+80	[°C]	
Storage Humidity	HST	8	90	[%RH]	

Note 1: With in $T_a = 25^\circ\text{C}$

Note 2: Permanent damage to the device may occur if exceed maximum values

Note 3: For quality performance, please refer to AUO IIS (Incoming Inspection Standard).



5. Electrical characteristics

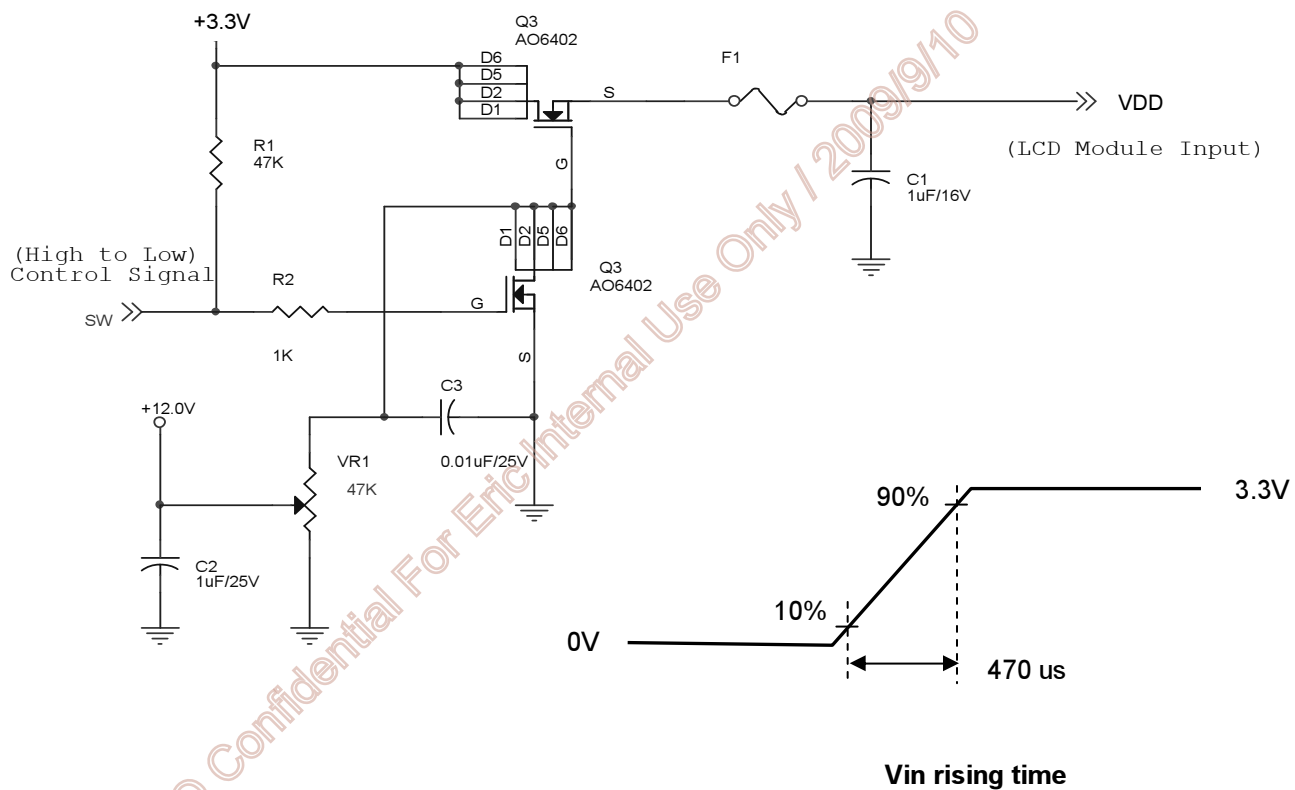
5.1 TFT LCD Module

5.1.1 Power Specification

Input power specifications are as follows:

Symble	Parameter	Min.	Typ.	Max.	Unit	Condition
VDD	Logic/LCD Drive Voltage	3.0	3.3	3.6	[Volt]	±10%
IDD	VDD current	-	600	630	[mA]	VDD =3.3V , Black Pattern, at 60Hz
IDD	VDD current	-	500	525	[mA]	VDD =3.3V , Gray-scale Pattern, at 60Hz
Irush	LCD Inrush Current	-	930	1500	[mA]	Vin rising time = 470us
PDD	VDD Power	-	1.98	2.27	[Watt]	VDD =3.3V , Black Pattern, at 60Hz
PDD	VDD Power	-	1.65	1.89	[Watt]	VDD =3.3V , Gray-scale Pattern, at 60Hz

Note: Measurement conditions:



5.1.2 Signal Electrical Characteristics

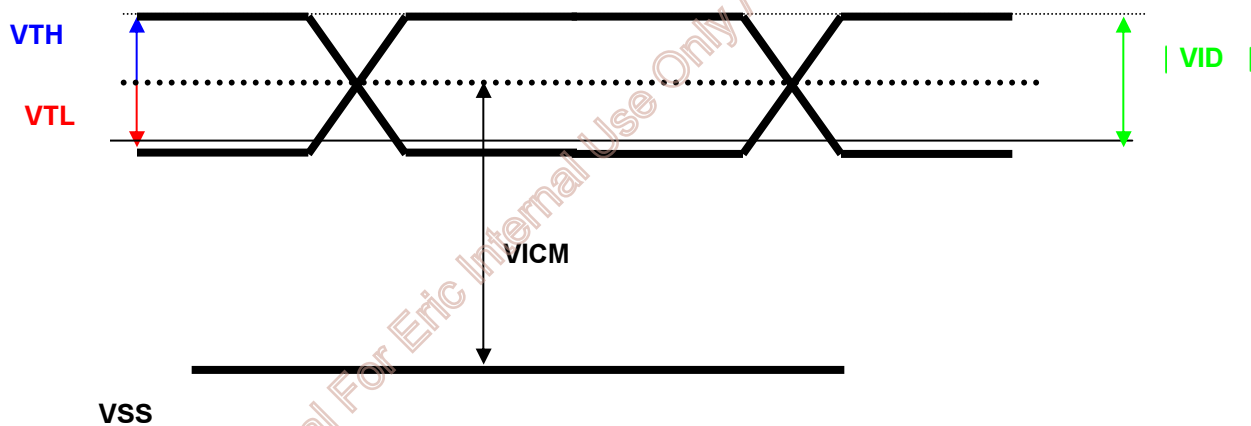
Input signals shall be low or Hi-Z state when Vin is off

It is recommended to refer the specifications of SN75LVDS82DGG (Texas Instruments) in detail.

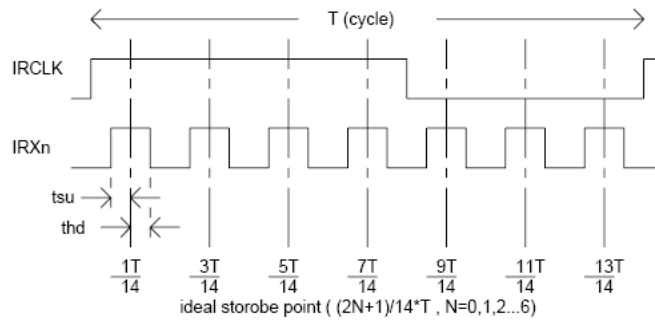
Each signal characteristics are as follows;

Symbol	Parameter	Min	Typ	Max	Units	Condition
VTH	Differential Input High Threshold	-	-	100	[mV]	VICM = 1.25V Note1
VTL	Differential Input Low Threshold	-100	-	-	[mV]	VICM = 1.25V Note1
VID	Input Differential Voltage	250	350	450	[mV]	Note1
VICM	Differential Input Common Mode Voltage	1.0	1.25	2	[V]	VTH/VTL = ± 100mV Note1
tsu	Data setup time	400	--	--	ps	VDD=3.3±0.3V , TOP=-10~85 °C Tclk =15ns , VICM =1.25V Note2
thd	Data hold time	400	--	--	ps	VDD=3.3±0.3V , TOP=-10~85 °C Tclk =15ns , VICM =1.25V Note2
Tcj1	Cycle Jitter	--	--	250	ps	
Tcj2	Clock Cycle Rate of Change	--	--	20	ps/cycle	

Note1: LVDS Signal Waveform



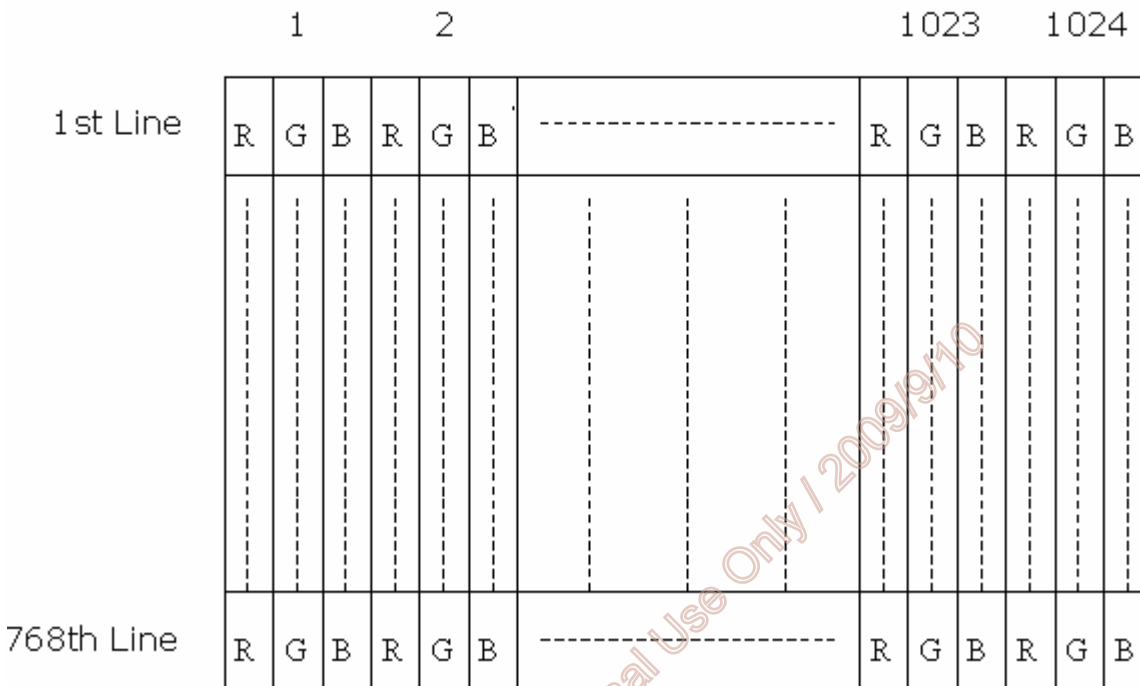
Note2: LVDS Input Signal For Timing Specification



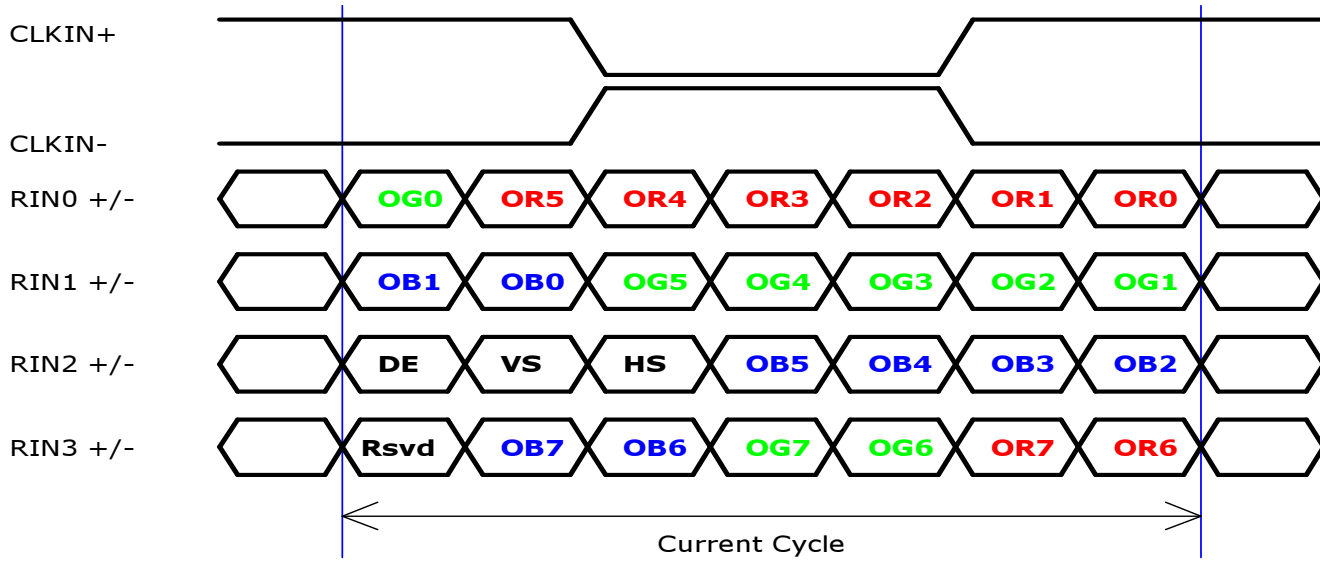
6. Signal Characteristic

6.1 Pixel Format Image

Following figure shows the relationship of the input signals and LCD pixel format.



6.2 The Input Data Format



Note1: Please follow PSWG.

Note2: 8-bit in

Note3: R/G/B data 7:MSB, R/G/B data 0:LSB

AUO Confidential For Eric Internal Use Only / 2009/9/10

6.3 Signal Description

The module using a pair of LVDS receiver SN75LVDS82(Texas Instruments) or compatible. LVDS is a differential signal technology for LCD interface and high speed data transfer device. Transmitter shall be SN75LVDS83(negative edge sampling) or compatible. The first LVDS port(RxOxxx) transmits odd pixels while the second LVDS port(RxExxx) transmits even pixels.

Suggest LVDS transmitter : THC63LVDM83A-G (THINE)

DF19G-20P-1H(56)		
Pin No.	Symbol	Description
1	VDD	Power Supply, 3.3V (typical)
2	VDD	Power Supply, 3.3V (typical)
3	VSS	Ground
4	VSS	Ground
5	Rin0-	- LVDS differential data input (R0-R5, G0)
6	Rin0+	+ LVDS differential data input (R0-R5, G0)
7	VSS	Ground
8	Rin1-	- LVDS differential data input (G1-G5, B0-B1)
9	Rin1+	+ LVDS differential data input (G1-G5, B0-B1)
10	VSS	Ground
11	Rin2-	- LVDS differential data input (B2-B5, HS, VS, DE)
12	Rin2+	+ LVDS differential data input (B2-B5, HS, VS, DE)
13	VSS	Ground
14	ClkIN-	- LVDS differential clock input
15	ClkIN+	+ LVDS differential clock input
16	VSS	Ground
17	Rin3-	- LVDS differential data input (R6-R7, G6-G7,B6-B7)
18	Rin3+	+ LVDS differential data input (R6-R7, G6-G7,B6-B7)
19	VSS	Ground
20	VSS	Ground

AUO Confidential For Eric Internal Use Only / 2009/19/10

6.4 Interface Timing

6.4.1 Timing Characteristics

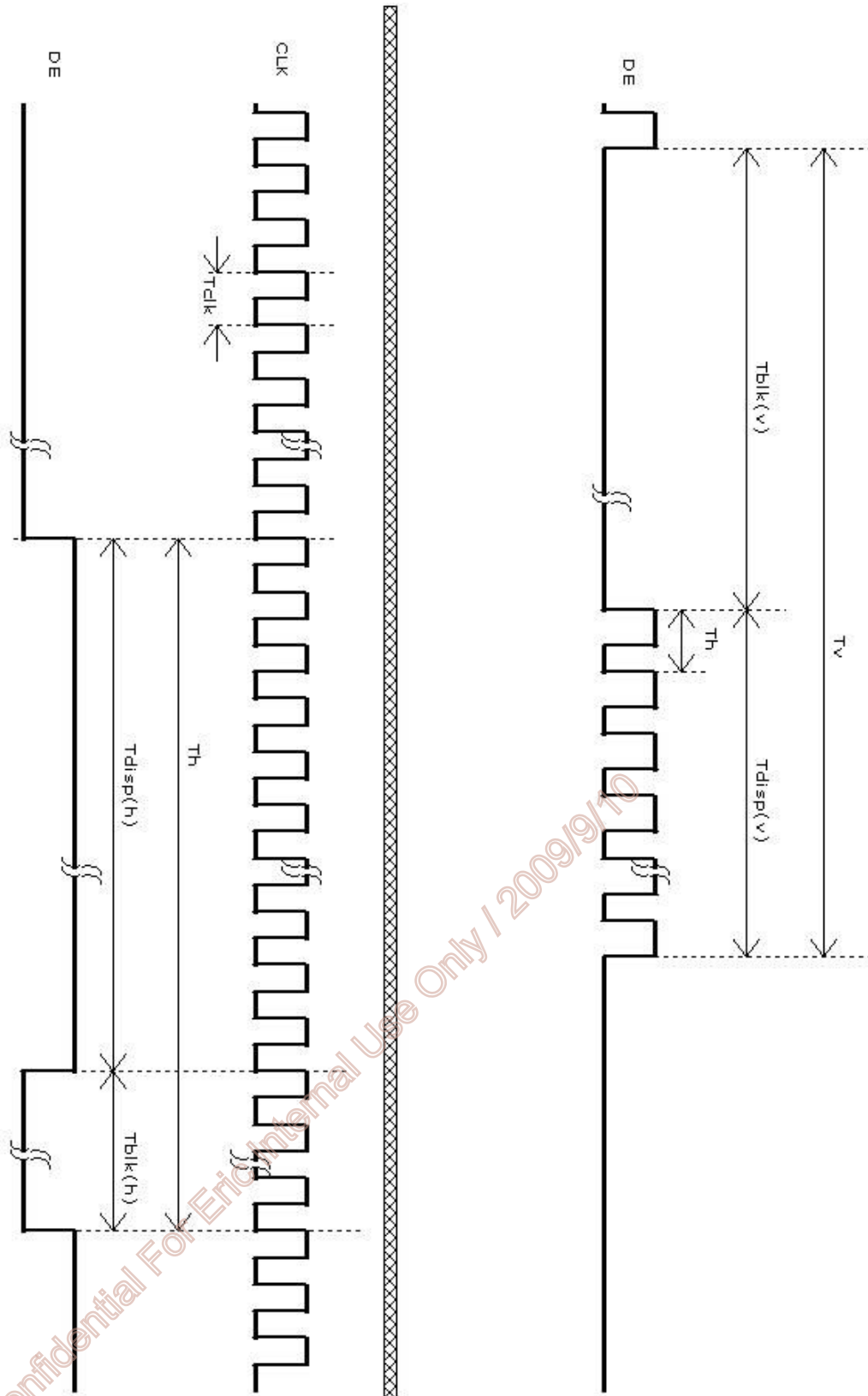
Signal	Item	Symbol	Min	Typ	Max	Unit
Clock Timing	Clock frequency	Tclk	50	65	81	MHz
Hsync Timing	Horizontal active	Tdisp(h)	1024	1024	1024	Tclk
	Horizontal blanking	Tblk(h)	30	320	1024	Tclk
	Horizontal period	Th	1054	1344	2048	Tck
Vsync Timing	Vertical active	Tdisp(v)	768	768	768	Th
	Vertical blanking	Tblk(v)	8	38	256	Th
	Vertical period	Tv	776	806	1024	Th

Note: DE mode only

Note: Typical value refer to VESA STANDARD

AUO Confidential For Eric Internal Use Only / 2009/9/10

6.4.2 Timing Diagram



AUO Confidential For Internal Use Only / 2009/9/10

6.5 Color Input Data Reference

Color Data Reference

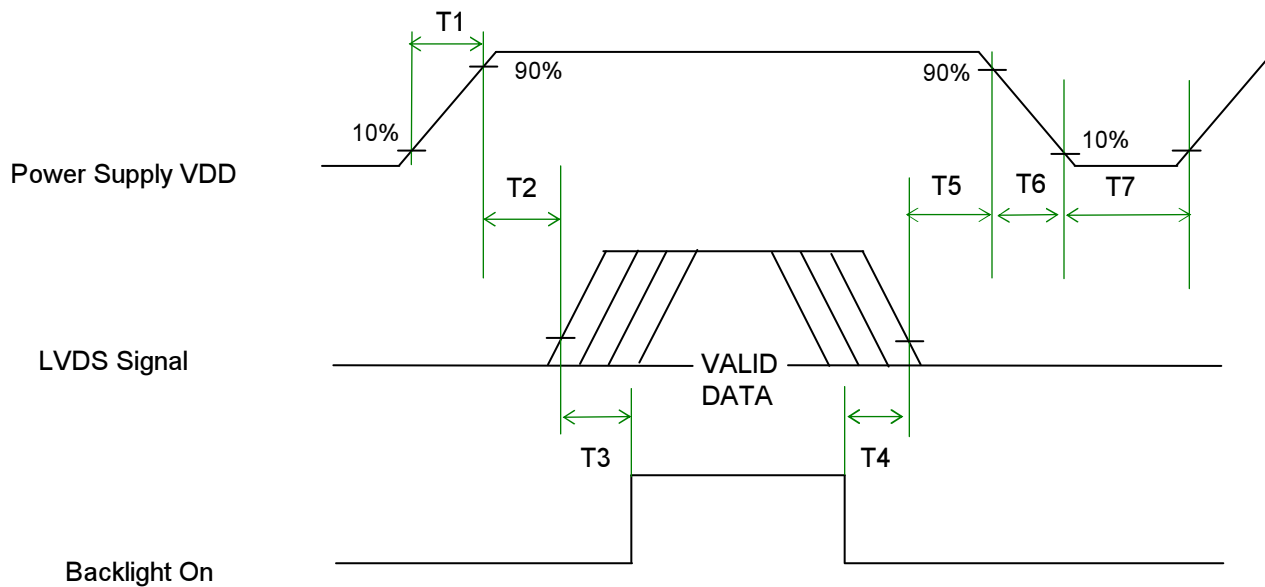
Color		Input Color Data																							
		RED								GREEN								BLUE							
		R7 (M)	R6	R5	R4	R3	R2	R1	R0 (L)	R7 (M)	R6	R5	R4	R3	R2	R1	R0 (L)	R7 (M)	R6	R5	R4	R3	R2	R1	R0 (L)
Basic Color	Black	0	0	0	0	0	0	0	0	0	0	0	0	0	0	0	0	0	0	0	0	0	0	0	0
	Red (255)	1	1	1	1	1	1	1	0	0	0	0	0	0	0	0	0	0	0	0	0	0	0	0	0
	Green (255)	0	0	0	0	0	0	0	1	1	1	1	1	1	1	1	1	0	0	0	0	0	0	0	0
	Blue (255)	0	0	0	0	0	0	0	0	0	0	0	0	0	0	0	0	1	1	1	1	1	1	1	1
	Cyan	0	0	0	0	0	0	0	1	1	1	1	1	1	1	1	1	1	1	1	1	1	1	1	1
	Magenta	1	1	1	1	1	1	1	0	0	0	0	0	0	0	0	0	1	1	1	1	1	1	1	1
	Yellow	1	1	1	1	1	1	1	1	1	1	1	1	1	1	1	1	0	0	0	0	0	0	0	0
	White	1	1	1	1	1	1	1	1	1	1	1	1	1	1	1	1	1	1	1	1	1	1	1	1
RED	RED (000)	0	0	0	0	0	0	0	0	0	0	0	0	0	0	0	0	0	0	0	0	0	0	0	0
	RED (001)	0	0	0	0	0	0	1	0	0	0	0	0	0	0	0	0	0	0	0	0	0	0	0	0
	—																								
	RED (254)	1	1	1	1	1	1	0	0	0	0	0	0	0	0	0	0	0	0	0	0	0	0	0	0
	RED (255)	1	1	1	1	1	1	1	0	0	0	0	0	0	0	0	0	0	0	0	0	0	0	0	0
GREEN	GREEN (000)	0	0	0	0	0	0	0	0	0	0	0	0	0	0	0	0	0	0	0	0	0	0	0	0
	GREEN (001)	0	0	0	0	0	0	0	0	0	0	0	0	0	0	0	1	0	0	0	0	0	0	0	0
	—																								
	GREEN (254)	0	0	0	0	0	0	0	1	1	1	1	1	1	1	1	0	0	0	0	0	0	0	0	0
	GREEN (255)	0	0	0	0	0	0	0	1	1	1	1	1	1	1	1	0	0	0	0	0	0	0	0	0
BLUE	BLUE (000)	0	0	0	0	0	0	0	0	0	0	0	0	0	0	0	0	0	0	0	0	0	0	0	0
	BLUE (001)	0	0	0	0	0	0	0	0	0	0	0	0	0	0	0	0	0	0	0	0	0	0	0	1
	—																								
	BLUE (254)	0	0	0	0	0	0	0	0	0	0	0	0	0	0	0	1	1	1	1	1	1	1	1	0
	BLUE (255)	0	0	0	0	0	0	0	0	0	0	0	0	0	0	0	1	1	1	1	1	1	1	1	1

Note: grey-level 252~255 are the same

AUO Confidential For Eric Internal Use Only 1-2009-0170

6.6 Power ON/OFF Sequence

Vin power and lamp on/off sequence is as follows. Interface signals are also shown in the chart. Signals from any system shall be Hi-Z state or low level when Vin is off.



Power Sequence Timing

Parameter	Value			Unit
	Min.	Typ.	Max.	
T1	0.5	-	10	[ms]
T2	30	40	50	[ms]
T3	200	-	-	[ms]
T4	100	-	-	[ms]
T5	0	16	50	[ms]
T6	-	-	10	[ms]
T7	1000	-	-	[ms]

7. Connector & Pin Assignment

Physical interface is described as for the connector on module. These connectors are capable of accommodating the following signals and will be following components.

7.1 TFT LCD Module

7.1.1 Connector

Connector Name / Designation	Interface Connector / Interface card
Manufacturer	HIROSE
Type Part Number	HRS DF19G-20P-1H(56)

7.1.2 Pin Assignment

Pin#	Signal Name	Pin#	Signal Name
1	VDD	2	VDD
3	VSS	4	VSS
5	Rin0-	6	Rin0+
7	VSS	8	Rin1-
9	Rin1+	10	VSS
11	Rin2-	12	Rin2+
13	VSS	14	ClkIN-
15	ClkIN+	16	VSS
17	Rin3-	18	Rin3+
19	VSS	20	VSS

AUO Confidential For Eric Internal Use Only 2009/19/10

8. Reliability Test

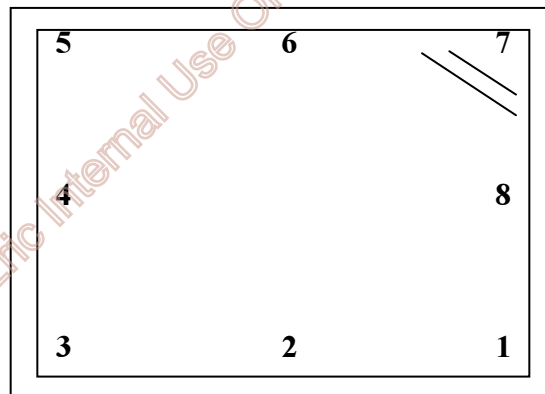
Environment test conditions are listed as following table.

Items	Required Condition	Note
Temperature Humidity Bias (THB)	Ta= 50□, 80%RH, 240hours	
High Temperature Operation (HTO)	Ta= 65□, 240hours	
Low Temperature Operation (LTO)	Ta= 0□, 240hours	
High Temperature Storage (HTS)	Ta= 80□, 240hours	
Low Temperature Storage (LTS)	Ta= -10□, 240hours	
Drop Test	Height: 60 cm, package test	
Thermal Shock Test (TST)	-10□/30min, 80□/30min, 100 cycles	1
ESD (Electro Static Discharge)	Contact Discharge: ± 8KV, 150pF(330Ω) 1sec, 8 points, 25 times/ point.	2,3
	Air Discharge: ± 15KV, 150pF(330Ω) 1sec 8 points, 25 times/ point.	

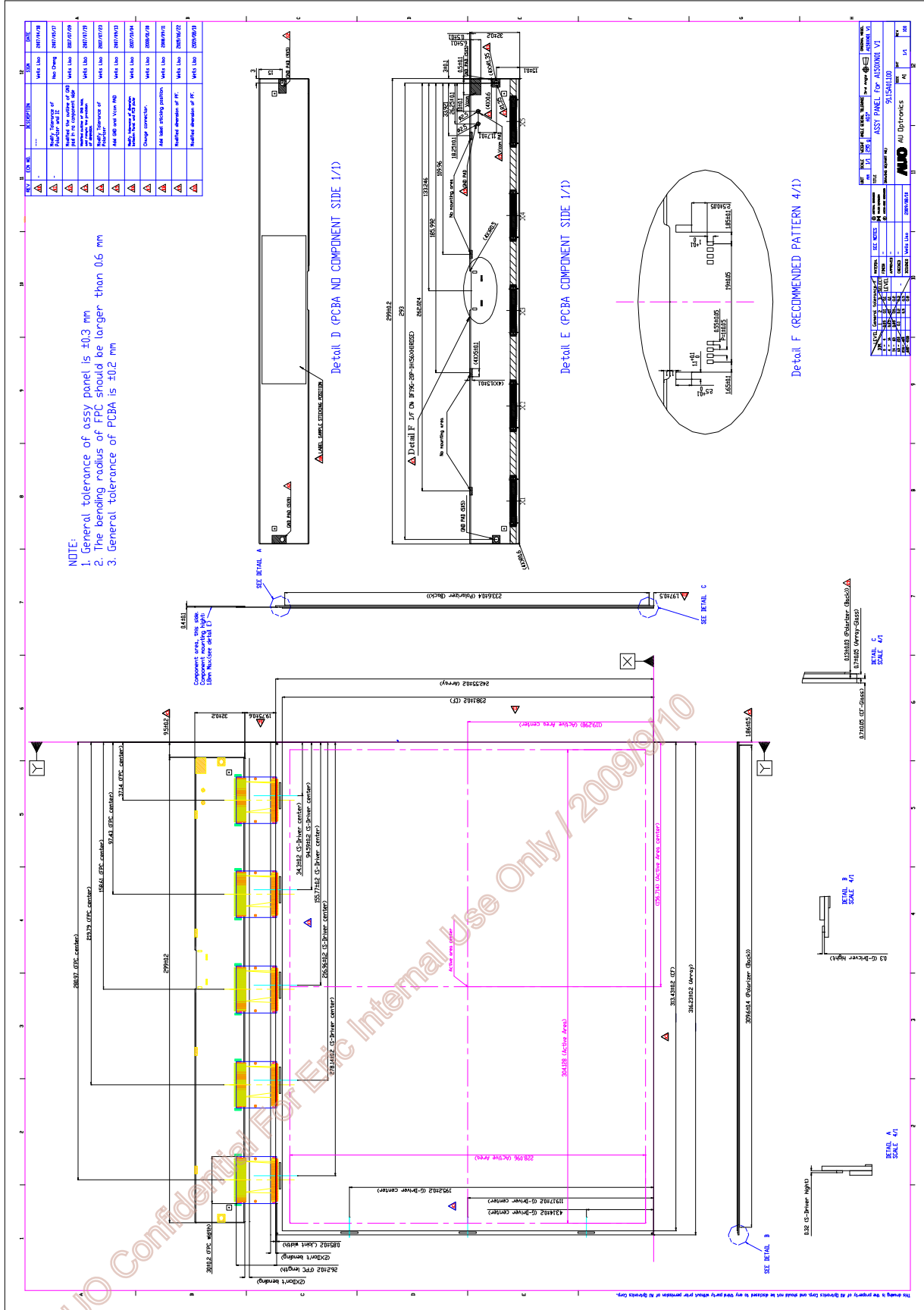
Note 1: The TFT-LCD module will not sustain damage after being subjected to 100 cycles of rapid temperature change. A cycle of rapid temperature change consists of varying the temperature from -10°C to 80°C, and back again. Power is not applied during the test. After temperature cycling, the unit is placed in normal room ambient for at least 4 hours before power on.

Note 2: According to EN61000-4-2 , ESD class B: Some performance degradation allowed. No data lost. Self-recoverable. No hardware failures.

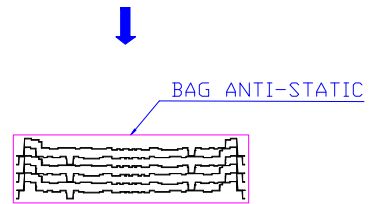
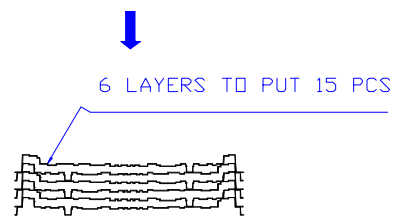
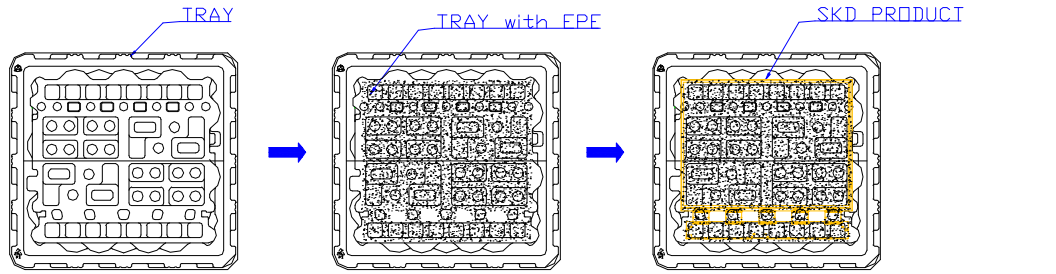
Note 3:



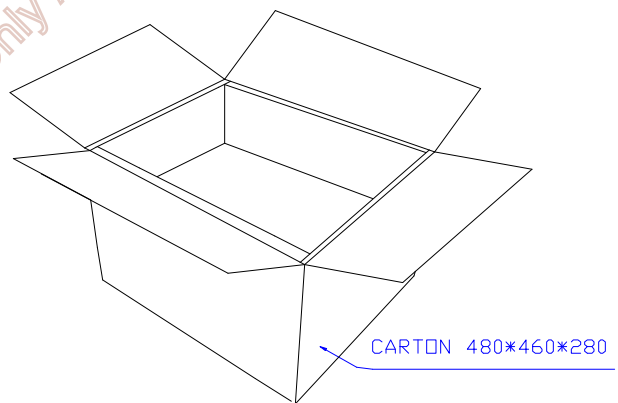
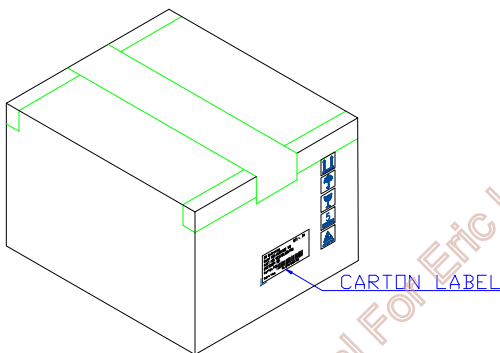
9. Outline Drawing



10. Packing Form



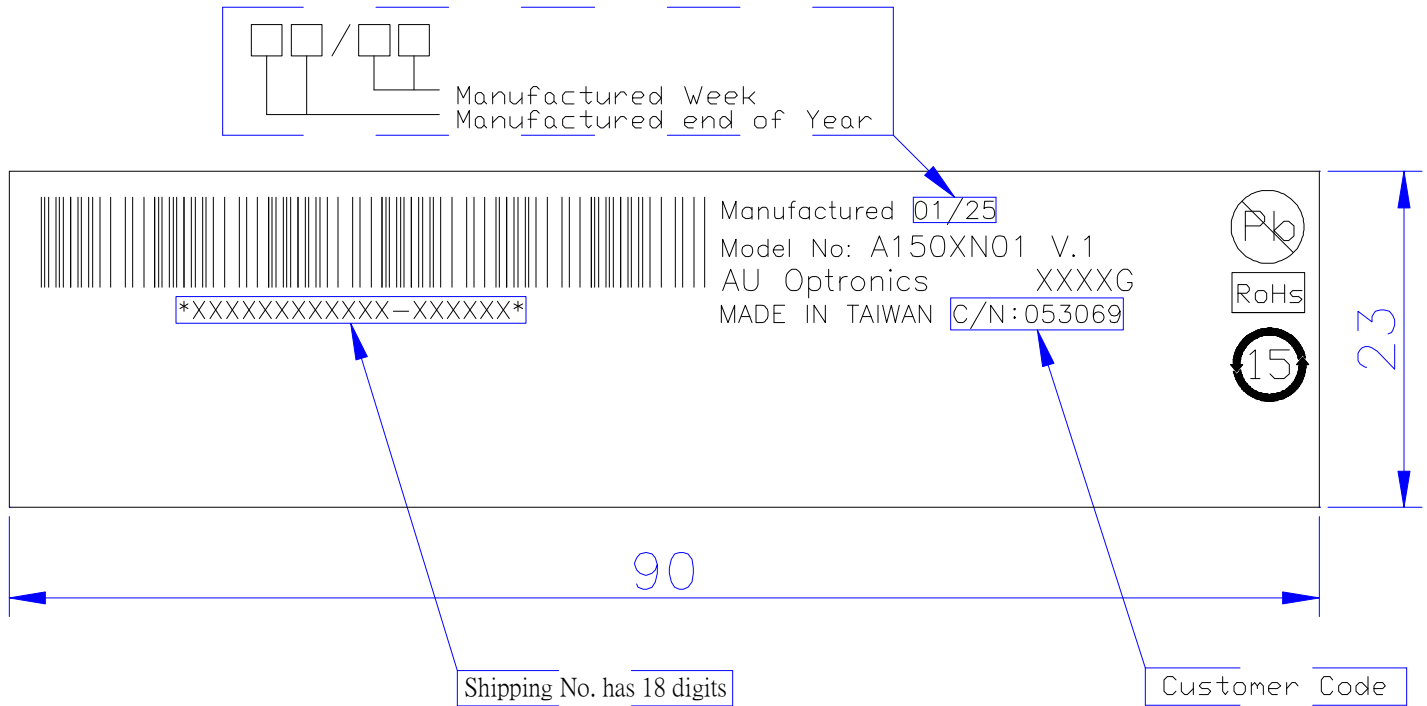
1PCS CARTON
PUTS 30PCS SKD



AUO Confidential For Eric Internal Use Only / 2009/9/10

11. Shipping Label

11.1. Lot Definition of Product (Product Label)



A. Manufactured end of year mark						B. Manufactured week mark			
Mark	08	09	10	11	...	Mark	01	02	...
Definition	2008	2009	2010	2011	...	Definition	1st Week	2nd Week	...

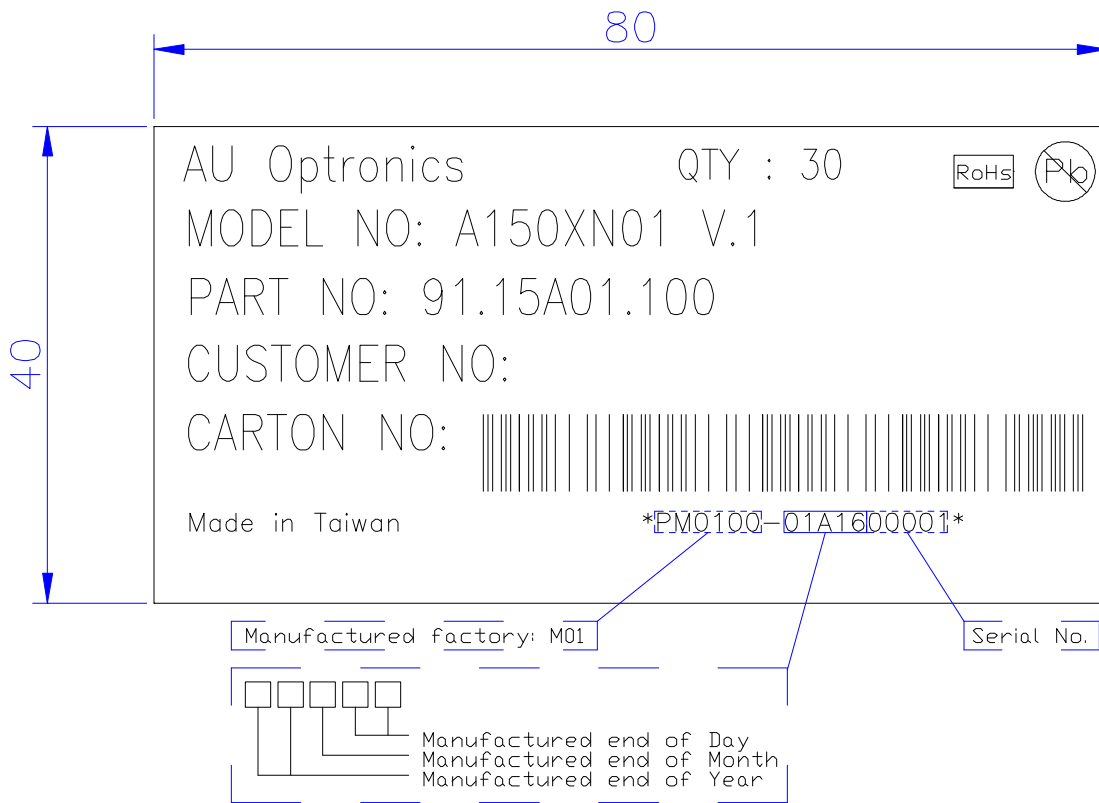
Shipping No. has 18 digits: **VW74001**00001-PM0100 for example: VW7400100001-PM0100
=> Lot number

Production Date Related:
VW7400100001-PM0100 => Module production year (2007)
VW7400100001-PM0100 => Module production month (Jan~Sep:1~9. Oct: A, Nov: B, Dec: C)

VW74001**00001**-PM0100 => Serial number
 VW7400100001-**PM0100** => Factory number

AUO Confidential For Eric Internal Use Only / 2009/10/10

12. Carton Label



AUO Confidential For Eric Internal Use Only / 2009/9/10

Appendix

CF Chromaticity SPEC:

Items	Typical (C light)	
	x	y
R	0.491±0.02	0.344±0.02
G	0.312±0.02	0.528±0.020
B	0.141±0.02	0.173±0.02
W	0.307±0.02	0.346±0.02
NTSC target	31.5(参考値)	

AUO Confidential For Eric Internal Use Only / 2009/9/10