

A2Y/A6Y

FORM 600 / SPECIAL PURPOSE



FORM 600 FUSES

Ferraz Shawmut Form 600 fuses were the original current-limiting fuses, pre-dating all the standards. Their 500V DC rating (through 600A) is a popular feature for special applications. Form 600 fuses provide a high degree of current limitation in AC and DC applications. Types 1 and 3 are dimensionally interchangeable with Class H and K fuses. Types 4 and 5 have unique rejection dimensions and are not interchangeable.

Ratings

- **AC:**
A2Y 1-600A
 250VAC, 200kA I.R.
A6Y 1-8A
 500VAC, 200kA I.R.
- **A6Y** 10-1200A
 600VAC, 200kA I.R.
- **DC:**
A2Y 1-600A
 500VDC, 100kA I.R.
A6Y 1-8A
 500VDC, 100kA I.R.
- **A6Y** 10-600A
 500VDC, 100kA I.R.

Approvals

- AC: Guide No. JFHR2 (1-600A)
- DC Tested to UL198L Parameters (1-600A)
- UL Recognized Component

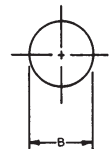
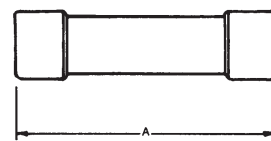


A2Y –Standard Fuse Ampere Ratings, Catalog Numbers

AMPERE RATING	CATALOG NUMBER	AMPERE RATING	CATALOG NUMBER	AMPERE RATING	CATALOG NUMBER	AMPERE RATING	CATALOG NUMBER	AMPERE RATING	CATALOG NUMBER
1	A2Y1-1	30	A2Y30-1	80	A2Y80-4	175	A2Y175-4	400	A2Y400-4
2	A2Y2-1	35	A2Y35-1	90	A2Y90-3	200	A2Y200-3	450	A2Y450-3
3	A2Y3-1	40	A2Y40-1	90	A2Y90-4	200	A2Y200-4	450	A2Y450-4
5	A2Y5-1	45	A2Y45-1	100	A2Y100-3	250	A2Y250-3	500	A2Y500-3
6	A2Y6-1	50	A2Y50-1	100	A2Y100-4	250	A2Y250-4	500	A2Y500-4
8	A2Y8-1	60	A2Y60-1	125	A2Y125-3	300	A2Y300-3	500	A2Y500-5
10	A2Y10-1	70	A2Y70-3	125	A2Y125-4	300	A2Y300-4	600	A2Y600-3
15	A2Y15-1	70	A2Y70-4	150	A2Y150-3	350	A2Y350-3	600	A2Y600-4
20	A2Y20-1	70	A2Y70-5	150	A2Y150-4	350	A2Y350-4	600	A2Y600-5
25	A2Y25-1	80	A2Y80-3	175	A2Y175-3	400	A2Y400-3		

A6Y –Standard Fuse Ampere Ratings, Catalog Numbers

AMPERE RATING	CATALOG NUMBER	AMPERE RATING	CATALOG NUMBER	AMPERE RATING	CATALOG NUMBER	AMPERE RATING	CATALOG NUMBER
1	A6Y1-1	70	A6Y70-4	200	A6Y200-4	450	A6Y450-4
2	A6Y2-1	80	A6Y80-3	200	A6Y200-5	450	A6Y450-5
3	A6Y3-1	80	A6Y80-4	225	A6Y225-3	500	A6Y500-3
5	A6Y5-1	90	A6Y90-3	225	A6Y225-4	500	A6Y500-4
6	A6Y6-1	90	A6Y90-3	225	A6Y225-5	500	A6Y500-5
8	A6Y8-1	100	A6Y100-4	250	A6Y250-3	600	A6Y600-3
10	A6Y10-1	100	A6Y100-3	250	A6Y250-4	600	A6Y600-4
15	A6Y15-1	125	A6Y125-4	250	A6Y250-5	600	A6Y600-5
20	A6Y20-1	125	A6Y125-3	300	A6Y300-3	650	A6Y650-4
25	A6Y25-1	125	A6Y125-5	300	A6Y300-4	650	A6Y650-4
30	A6Y30-1	150	A6Y150-3	300	A6Y300-5	800	A6Y800-4
35	A6Y35-1	150	A6Y150-4	350	A6Y350-3	800	A6Y800-5
40	A6Y40-1	150	A6Y150-5	350	A6Y350-4	1000	A6Y1000-4
45	A6Y45-1	175	A6Y175-3	400	A6Y400-3	1000	A6Y1000-5
50	A6Y50-1	175	A6Y175-4	400	A6Y400-4	1200	A6Y1200-4
60	A6Y60-1	175	A6Y175-5	400	A6Y400-5	1200	A6Y1200-5
70	A6Y70-3	200	A6Y200-3	450	A6Y450-3	-	-



Type 1, 1-60 Amperes Class K Dimensions

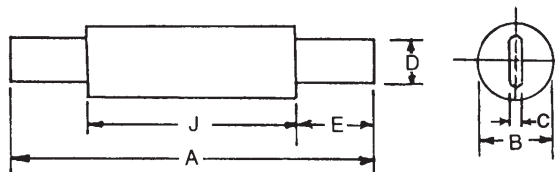
AMPERE RATING	INCHES	
	A	B
A2Y - 1-60A		
1-30	2	9/16
35-60	3	13/16
A6Y - 1-60A		
1-30	5	13/16
35-60	5-1/2	1-1/16

A2Y/A6Y

FORM 600 / SPECIAL PURPOSE

Type 3, 70-600 Amperes, Class K Dimensions

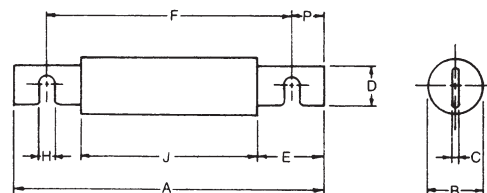
AMPERE RATING	INCHES					
	A	B	C	D	E	J
250 VAC/500 VDC - A2Y (Amp) - 3						
70-100	5-7/8	1	1/8	23/32	1-5/8	2-21/32
125-200	7-1/8	1-1/2	3/16	1-1/8	2-3/16	2-25/32
225-400	8-5/8	2	1/4	1-5/8	2-15/16	2-25/32
450-600	10-3/8	2-1/2	1/4	2	3-13/16	2-25/32
600 VAC/500 VDC - A6Y (Amp) - 3						
70-100	7-7/8	1	1/8	23/32	2-5/8	2-21/32
110-200	9-5/8	1-1/2	3/16	1-1/8	3-7/16	2-25/32
225-400	11-5/8	2	1/4	1-5/8	4-7/16	2-25/32
450-600	13-3/8	2-1/2	1/4	2	5-5/16	2-25/32



TYPE 3 70-600A

Type 4, 70-600 Amperes – Dimensions

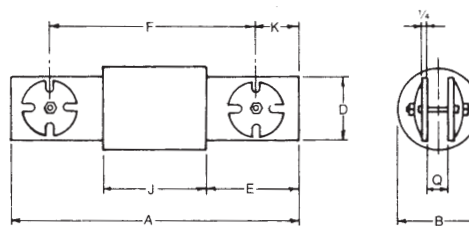
AMPERE RATING	INCHES									
	A	B	C	D	E	F	H	J	P	
250 VAC/500 VDC - A2Y (Amp) - 4										
70-100	5-7/8	1	1/8	23/32	1-5/8	4-7/8	13/64	2-21/32	1/2	
125-200	7-1/8	1-1/2	3/16	1-1/8	2-3/16	5-3/4	17/64	2-25/32	11/16	
225-400	8-5/8	2	1/4	1-5/8	2-15/16	6-3/4	21/64	2-25/32	15/16	
450-600	10-3/8	2-1/2	1/4	2	3-13/16	8-1/8	25/64	2-25/32	1-1/8	
600 VAC/500 VDC - A6Y (Amp) - 4										
70-100	7-7/8	1	1/8	23/32	2-5/8	6-7/8	13/64	2-21/32	1/2	
125-200	9-5/8	1-1/2	3/16	1-1/8	3-7/16	8-1/4	17/64	2-25/32	11/16	
225-400	11-5/8	2	1/4	1-5/8	4-7/16	9-3/4	21/64	2-25/32	15/16	
450-600	13-3/8	2-1/2	1/4	2	5-5/16	11-1/8	25/64	2-25/32	1-1/8	



TYPE 4 70-600A

Type 4, 650-1200 Amperes – Dimensions

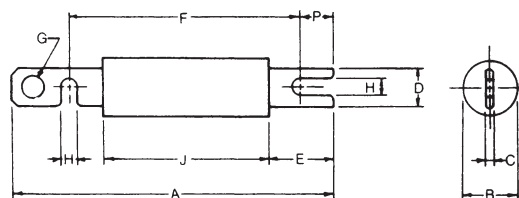
AMPERE RATING	INCHES							
	A	B	D	E	F	J	K	Q
600 VAC only - A6Y (Amp) - 4								
650-1200	10-1/2	3	2	3-3/8	7-7/8	3-3/4	1-5/16	5/8



TYPE 4 650-1200A

Type 5, 125-600 Amperes/Hinge Disconnect type – Dimensions

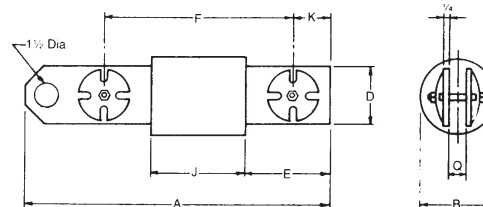
AMPERE RATING	INCHES										
	A	B	C	D	E	F	G	H	J	P	
600 VAC/500 VDC - A6Y (Amp) - 5											
125-200	10-3/4	1-1/2	3/16	1-1/8	3-7/16	8-1/4	3/4	17/64	2-25/32	11/16	
225-400	13-1/4	2	1/4	1-5/8	4-7/16	9-3/4	7/8	21/64	2-25/32	15/16	
450-600	15-3/16	2-1/2	1/4	2	5-5/16	11-1/8	1	25/64	2-25/32	1	



TYPE 5 125-600A

Type 5, 650-1200 Amperes/Hinge Disconnect Type – Dimensions

AMPERE RATING	INCHES							
	A	B	D	E	F	J	K	Q
600 VAC only - A6Y (Amp) - 5								
650-1200	12-1/8	3	2	3-3/8	7-7/8	3-3/4	1-5/16	5/8



TYPE 5 650-1200A



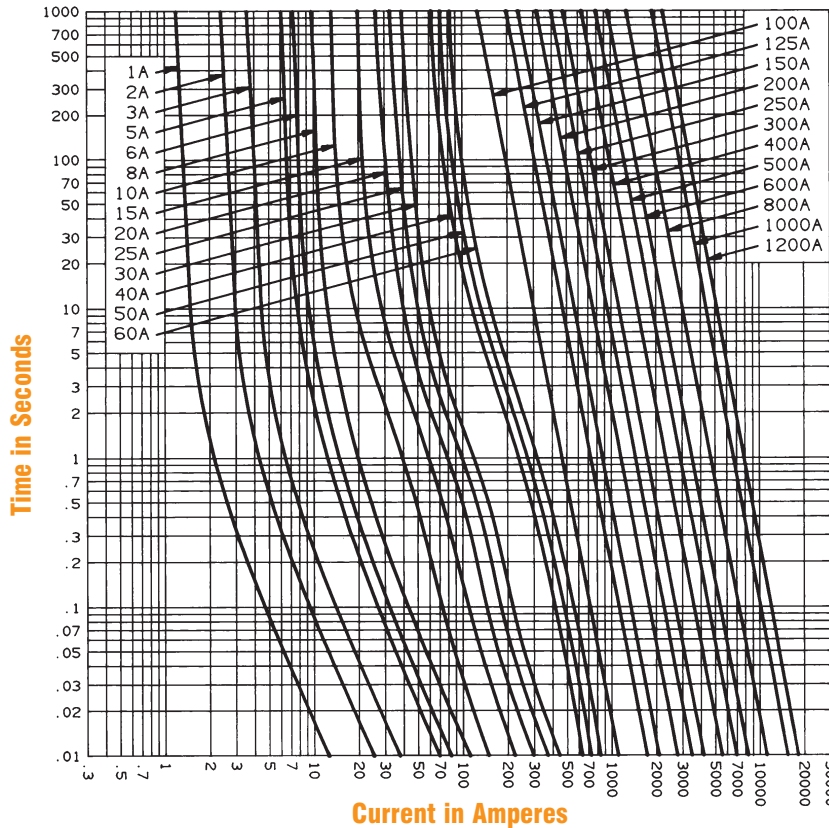
A2Y/A6Y

FORM 600 / SPECIAL PURPOSE

1-600 Amperes, 250 or 600 Volts - Types 1, 3 or 5

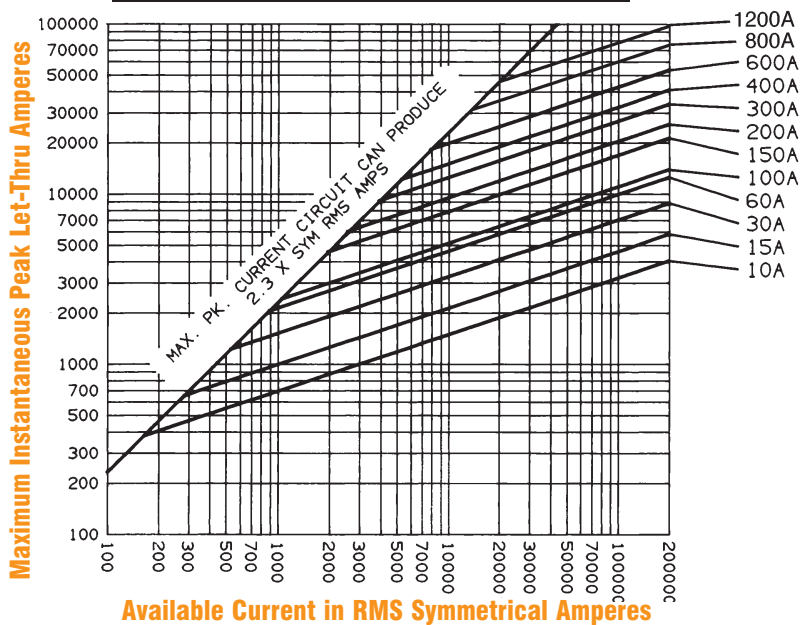
800-1200 Amperes, 600 Volts - Types 4 or 5

Melting Time - Current Data



10-600 Amperes, 250 or 600 Volts 800-1200 Amperes, 600 Volts only

Peak Let-Thru Current Data



DC Capability

Catalog No. Prefix	Ampere Rating	DC Voltage Rating*
A2Y	1-600	500
A6Y	1-600	500

*Consult factory for specifics regarding circuit time constants and DC interrupting rating.

Recommended Fuse Blocks With Box Connectors For Form 600 Types 1 & 3 Fuses

Fuse Ampere Rating	Catalog Number			
	250V		600V	
	1 Pole	3 pole	1 pole	3 pole
1-30	20306	20308	60306	60308
31-60	20606	20608	60606	60608
61-100	21036	21038	61036	61038
101-200	22001	22003	62001	62003
201-400	24001	24003	64001	64003
401-600	2631	2633	6631	6633

A variety of pole configurations and termination provisions is available. Refer to the fuse holder section of this catalog for details.