



DESCRIPTION

The A4805 is a series of high voltage high-precision voltage detectors developed using standard CMOS process. The detection voltage is fixed internally with an accuracy of $\pm 2.4\%$. Two output forms, Nch open-drain output, are available low current consumption and miniature package lineup can meet demand from the portable device applications.

A4805 is available in SOT89-3 package.

FEATURES

- Low current consumption $3\mu\text{A typ.}(V_{\text{IN}}=8\text{V})$
- High-precision detection voltage $\pm 2.4\%$
- Operating voltage range $-0.3\text{ V to }22\text{ V}$
- Detection voltage $2.4\text{ V to }7.0\text{ V}$ (0.1V step)
- Output form Nch open-drain output (Active Low)
- Available in SOT89-3 package

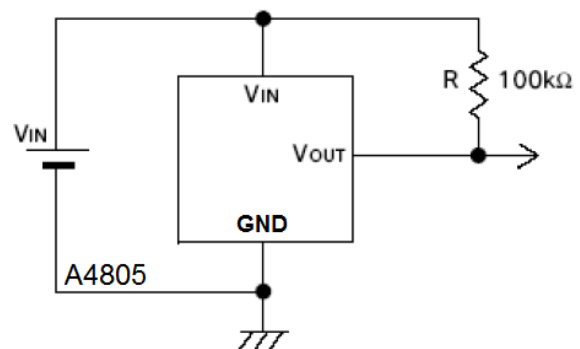
APPLICATION

- Battery checkers
- Power failure detectors
- Power monitor for portable equipments such as pagers, calculators, electronic notebooks and remote controllers.
- Constant voltage power monitor for cameras, video equipments and communication devices.
- Power monitor for microcomputers and reset for CPUs.

ORDERING INFORMATION

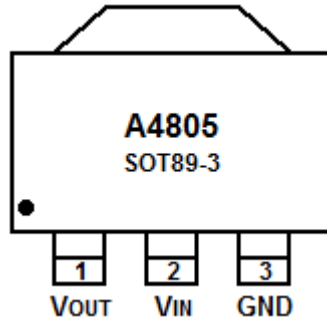
Package Type	Part Number	
SOT89-3	K3	A4805K3R-XXN A4805K3VR-XXN
Note	XX: Detect Voltage 39=3.9V, 45=4.5V N: N-channel open drain R: Tape & Reel V: Halogen free Package	
AiT provides all RoHS products Suffix "V" means Halogen free Package		

TYPICAL APPLICATION





PIN DESCRIPTION



Top View

Pin #	Symbol	Function
1	V _{OUT}	Voltage detection output pin
2	V _{IN}	Voltage input pin
3	GND	GND Pin

ABSOLUTE MAXIMUM RATINGS

T_A = 25°C

V _{IN} , Power Supply Voltage		22V
I _{OUT} , Output Current		50mA
V _{OUT} , Output Voltage	N-ch	V _{SS} -0.3V ~22V
P _D , Power Dissipation	SOT89-3	500mW
T _{OPR} , Operation Ambient Temperature		-40°C~+85°C

Stresses beyond may cause permanent damage to the device. These are stress ratings only and functional operation of the device at these or any other conditions beyond those indicated in the Electrical Characteristics are not implied. Exposure to absolute maximum rating conditions for extended periods may affect device reliability.



ELECTRICAL CHARACTERISTICS

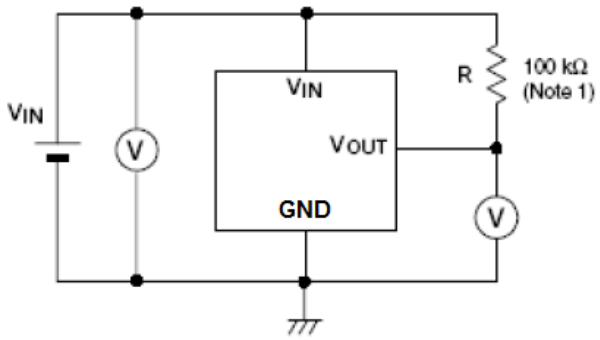
$V_{DF(T)} = 2.4 \text{ to } 7.0\text{V} \pm 2.4\%$ $T_A = 25^\circ\text{C}$

Parameter	Symbol	Conditions		Min	Typ.	Max	Unit	Test circuit
Detection Voltage	V_{DF}			V_{DF} x0.976	V_{DF}	V_{DF} x1.024	V	1
Release Voltage	V_{HYS}			V_{DF} x0.02	V_{DF} x0.05	V_{DF} x0.08	V	1
Current Consumption	I_{SS}	$V_{IN} = 8\text{V}$			3	5.6	μA	2
Output Sink Current	I_{OL}	$V_{DD} = 3.0\text{V}$	$V_{OUT} = 0.3\text{V}$	0.8	1.5		mA	3
		$V_{DD} = 3.3\text{V}$	$V_{OUT} = 0.33\text{V}$	1	2			
		$V_{DD} = 3.6\text{V}$	$V_{OUT} = 0.36\text{V}$	1.2	2.5			
		$V_{DD} = 4.1\text{V}$	$V_{OUT} = 0.41\text{V}$	6.0	11.5			
Temperature Coefficient		$-40 \sim +85^\circ\text{C}$			± 100		ppm/ $^\circ\text{C}$	

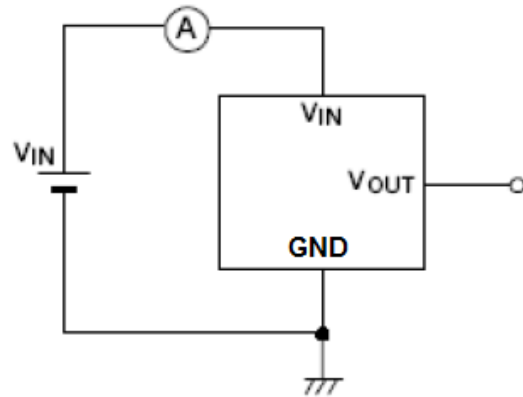


TEST CIRCUIT

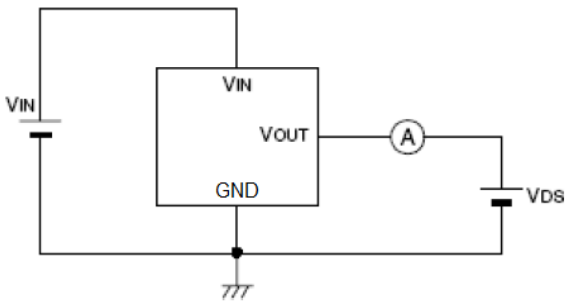
Circuit 1



Circuit 2



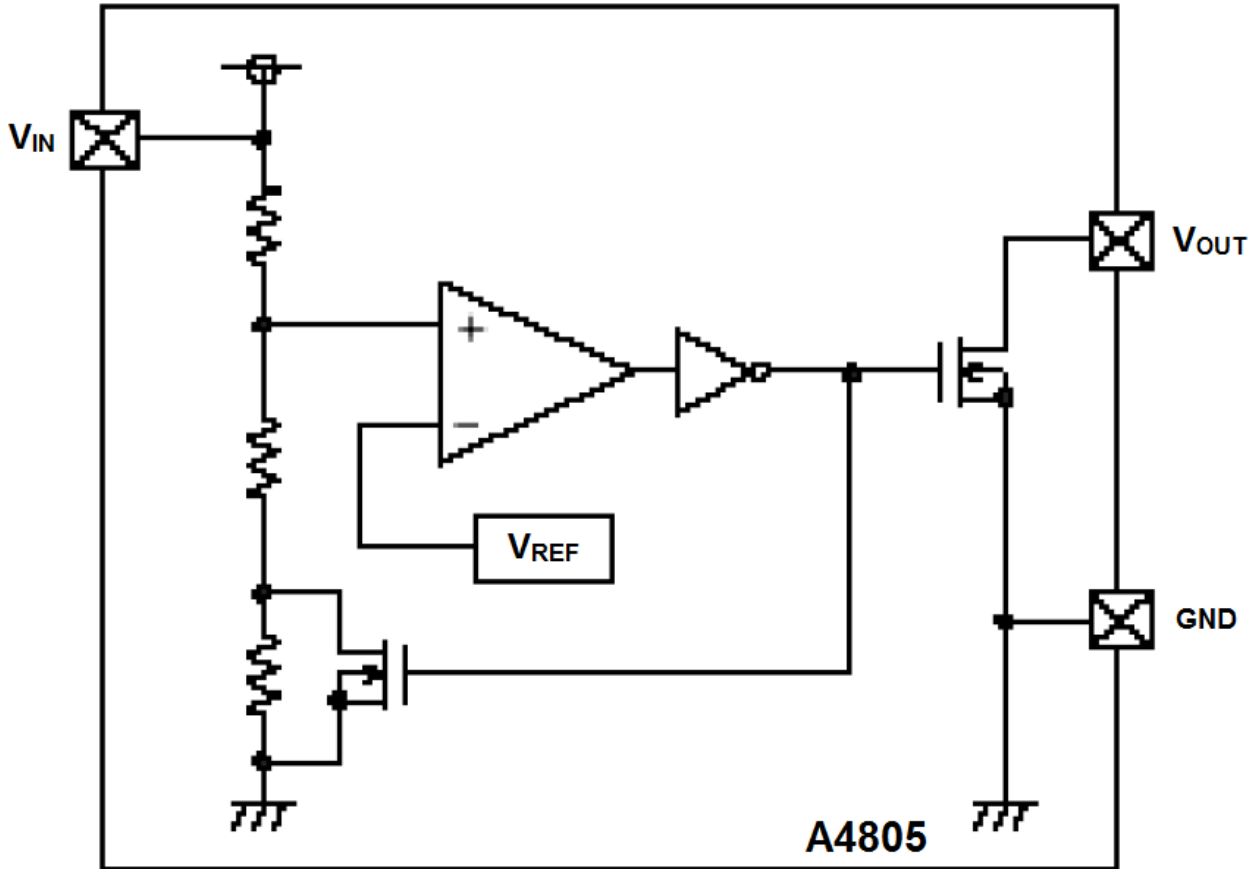
Circuit 3



Note1 : The resistor is selected according the custom's system



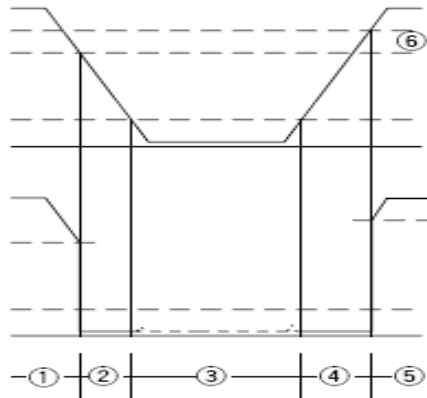
BLOCK DIAGRAM



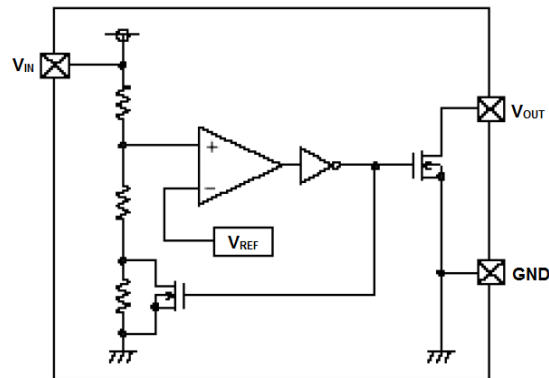


DETAILED INFORMATION

Timing Chart



Operation

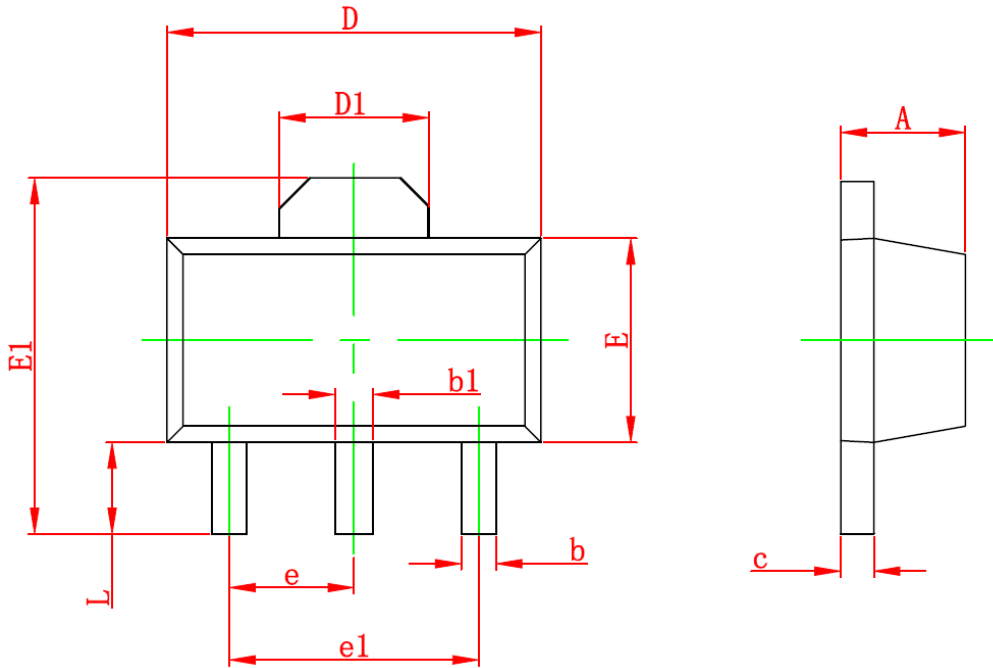


- 1-1. When the power supply voltage (V_{DD}) is higher than the release voltage (V_{DF}), the Nch transistor is OFF , V_{OUT} is pull up by external resistor to high logic.
- 1-2. When the power supply voltage (V_{DD}) is lower than the release voltage (V_{DF}), the Nch transistor is ON V_{OUT} is low.
- 1-3. When the V_{DD} falls below the minimum operating voltage, the output becomes undefined.
- 1-4. The V_{SS} level appears when the V_{DD} rises above the minimum operating voltage. The V_{SS} level still appears even when the V_{DD} surpasses $-V_{DF}$, as long as it does not exceed the release voltage $+V_{DF}$.
- 1-5. When the V_{DD} rises above $+V_{DF}$ the Nch transistor becomes OFF, V_{OUT} is pull up by external resistor to high logic.



PACKAGE INFORMATION

Dimension in SOT89-3 Package (Unit: mm)



Symbol	Min	Max
A	1.400	1.600
b	0.320	0.520
b1	0.400	0.580
c	0.350	0.440
D	4.400	4.600
D1	1.550 REF	
E	2.300	2.600
E1	3.940	4.250
e	1.500 TYP	
e1	3.000 TYP	
L	0.900	1.200



IMPORTANT NOTICE

AiT Semiconductor Inc. (AiT) reserves the right to make changes to any its product, specifications, to discontinue any integrated circuit product or service without notice, and advises its customers to obtain the latest version of relevant information to verify, before placing orders, that the information being relied on is current.

AiT Semiconductor Inc.'s integrated circuit products are not designed, intended, authorized, or warranted to be suitable for use in life support applications, devices or systems or other critical applications. Use of AiT products in such applications is understood to be fully at the risk of the customer. In order to minimize risks associated with the customer's applications, the customer should provide adequate design and operating safeguards.

AiT Semiconductor Inc. assumes to no liability to customer product design or application support. AiT warrants the performance of its products of the specifications applicable at the time of sale.