



20 x 12.6 x 7.2 mm

FUNDAMENTAL FREQUENCY, LOW JITTER 5.0V or 3.3Vdc FULL-SIZE DIP CRYSTAL CLOCK OSCILLATORS ACPE and ACPEL

FEATURES:

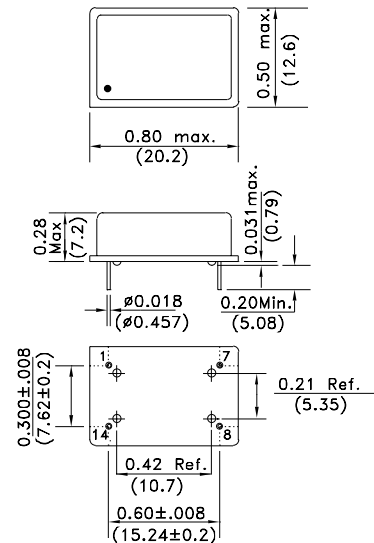
- Low jitter PECL logic.
- Tight overall frequency stability.
- Fast rise and fall times.
- Complementary output.
- Wide frequency range.

APPLICATIONS:

- Gigabit ethernet.
- Data telecommunications and networking.
- xDSL, Stratum IV.
- SONET/SDH.

STANDARD SPECIFICATIONS

PARAMETERS	ACPE	ACPEL
Frequency Range (F ₀)	10.00MHz - 200MHz	
Operating Temperature (T _{OPR})	0°C to +70°C (see options)	
Storage Temperature (T _{STO})	-55°C to +105°C	
Frequency Stability (ΔF/ F ₀)	±100ppm max. (See Options)	
Supply Voltage (V _{CC})	+5Vdc ±5%	+3.3Vdc ±5%
Supply Current (I _{DD})	100mA max.	
Duty cycle or Symmetry	40/60% max. measured 50% waveform	
Rise and Fall times (Tr/Tf)	2ns max. measured at 20% to 80% level	
Output	PECL square wave 10KH compatible	
Output and E/D options (pin 1)	No connection or Complementary output or E/D	
Output load	50Ω terminated into 3VDC or Thevenin equivalent	
Output voltage	VOH = V _{CC} - 1.025V min., V _{CC} - 0.74V max. VOL = V _{CC} - 1.95V min., V _{CC} - 1.60V max.	
Period Jitter	3.5ps RMS max.	
Enable/Disable option (pin 1)	VIL = V _{CC} - 1.62V max., VIH = V _{CC} - 1.025V min. (Output is in "0" state when disabled)	
Start-up time	10ms max.	



Dimensions: Inches (mm)

PIN NUMBER	FUNCTION
1	NC or \bar{Q} or E/D
7	GND / Case
8	Output
14	V _{CC}

* Output must be terminated into 50Ω to +3VDC or Thevenin equivalent.
Environmental and mechanical specifications, see appendix C. Group 1.
Value added, see appendix D.
Teat circuit and waveforms, see appendix B
Marking, see appendix G. Recommended handling, see appendix F.
Application notes, see appendix A.

ORDERING OPTIONS

ACPEX - Frequency - Temperature - Overall Frequency Stability - Pin 1 option - Value Added

Blank or L

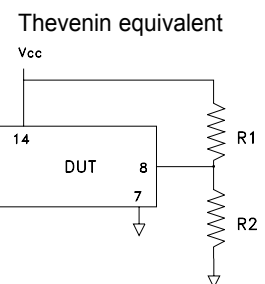
XX.XXXX MHz

-D for -10°C to +60°C
-E for -20°C to +70°C
-F for -30°C to +70°C
-N for -30°C to +85°C
-L for -40°C to +85°C

-Y for ± 10ppm max.
-J for ± 20ppm max.
-R for ± 25ppm max.
-K for ± 30ppm max.
-H for ± 35ppm max.
-C for ± 50ppm max.

-Blank = N/C
-QBAR = Complementary output
-A = Enable/Disable

-G Gull Wing
-QXX (Trimmed Leads)



V _{DD}	R1	R2
5.0V	82Ω	130Ω
3.3V	130Ω	82Ω



NOTE: Left blank if standard • All specifications and markings subject to change without notice

29 Journey • Aliso Viejo, CA 92656 • USA
(949) 448-7070 • FAX: (949) 448-8484

E-MAIL: abinfo@abracon.com • INTERNET ADDRESS: www.abracon.com

