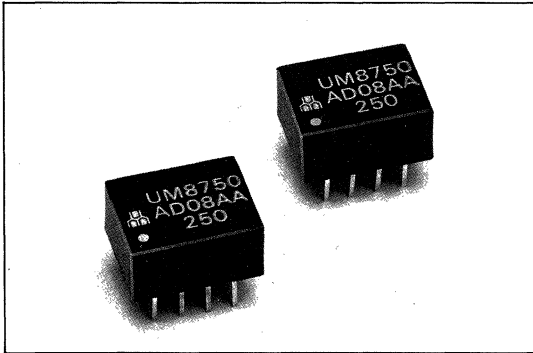




AD08AA SERIES: 8-PIN DIL 5-TAP EQUALLY-SPACED



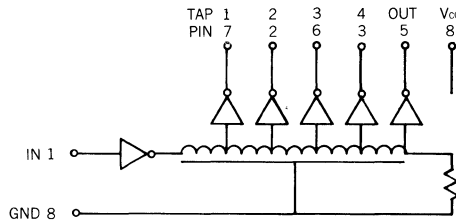
FEATURES:

- Compatible with TTL Circuits
- 5 Equally-Spaced Delay Taps
- Operating Temperature Range: 0°C to +70°C
- Custom Designs (Delays or Pin Layouts) Available upon Request

ELECTRICAL CHARACTERISTICS

Supply Voltage Vcc: 5.0±0.25 VDC
 Logic 1 Input Voltage: 2.0V min.
 Input Current: 50µA max.
 Logic 0 Input Voltage: 0.8V max.
 Input Current: -2.0mA max.
 Logic 1 Output Voltage: 2.4V min.
 Logic 0 Output Voltage: 0.5V max.
 All measurements made at Vcc=5.0V, 25°C

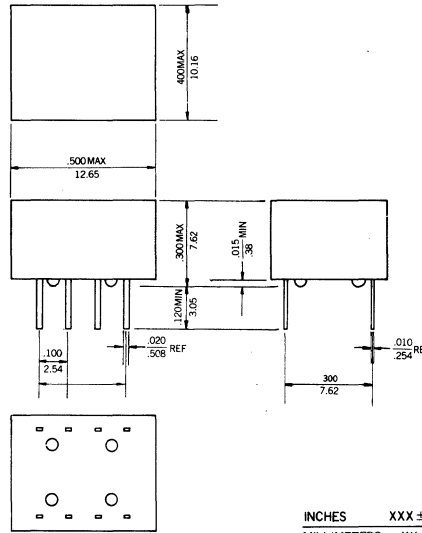
CIRCUIT CONFIGURATION:



FAN OUT CAPABILITIES

Logic 0 Output: 10 TTL loads/tap max.
 : 20 TTL loads/unit max.
 Logic 1 Output: 20 TTL loads/unit max.

PACKAGE DIMENSIONS:



INPUT TEST CONDITIONS

Pulse Voltage: 3.2 V
 Rise Time: 3.0 ns
 Supply Current: 60 mA typical
 Pulse Width: min. of 100% total delay
 Duty Cycle: 33% or less

ELECTRICAL SPECIFICATIONS:

PART NO.	TOTAL DELAY(1)(3) ns	TAP DELAY (1)(3) ns	RISE TIME ns max
AD08AA025	25	5	4
AD08AA050	50	10	4
AD08AA100	100	20	4
AD08AA150	150	30	4
AD08AA200	200	40	4
AD08AA250	250	50	4
AD08AA300	300	60	4
AD08AA350	350	70	4
AD08AA400	400	80	4
AD08AA450	450	90	4
AD08AA500	500	100	4

(1) Delays measured at 1.5V level on leading edge only with no loads on taps.
 (2) Rise Time measured from 0.75V to 2.4V with no loads.
 (3) ±5% or ±2ns which is greater.