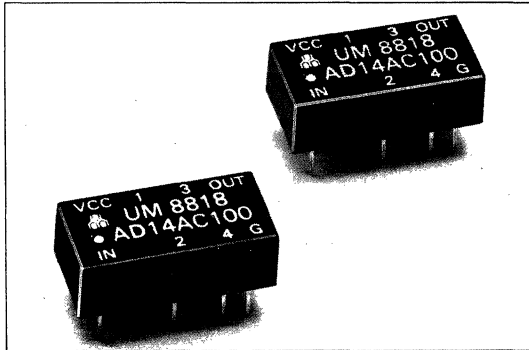




AD14AC SERIES: 14-PIN DIL 5-TAP FOR DYNAMIC RAM



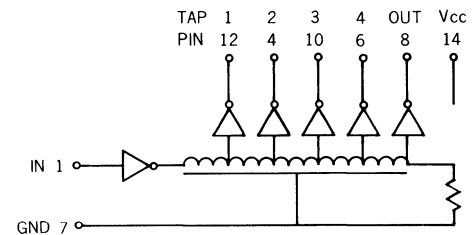
FEATURES:

- TTL and DTL Compatible
- Specifically Designed for Dynamic RAM Timing
- 5 Taps
- Used with Multiplex Address RAMS
- Operating Temperature Range: 0°C to +70°C

ELECTRICAL CHARACTERISTICS

Supply Voltage Vcc: 5.0±0.25 VDC
 Logic 1 Input Voltage: 2.0V min.
 Input Current: 50µA max.
 Logic 0 Input Voltage: 0.8V max.
 Input Current: -2.0mA max.
 Logic 1 Output Voltage: 2.4V min.
 Logic 0 Output Voltage: 0.5V max
 All measurements made at Vcc=5.0V, 25°C

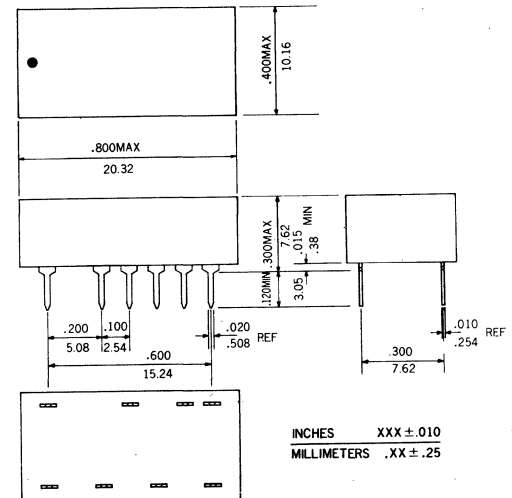
CIRCUIT AND PIN CONNECTIONS:



FAN OUT CAPABILITIES

Logic 0 Output: 10 TTL loads/tap max.
 : 20 TTL loads/unit max.
 Logic 1 Output: 20 TTL loads/unit max.

PACKAGE DIMENSIONS:



INPUT TEST CONDITIONS

Pulse Voltage: 3.2 V
 Rise Time: 3.0 ns
 Supply Current: 60 mA typical
 Pulse Width: min. of 100% total delay
 Duty Cycle: 33% or less

ELECTRICAL SPECIFICATIONS:

UM PART NO.	TOTAL TAP1	DELAY TAP2	AT EACH TAP TAP3 TAP4		±5%(ns)(1) OUTPUT	RISE TIME(2) ns max.
AD14AC340	25±5	45±5	160	185	340	4
AD14AC400	30±5	80±5	220	250	400	4
AD14AC440	40±5	100	265	290	440	4
AD14AC515	85±5	140	320	345	515	5

(1) Delays measured at 1.5V level on leading edge only with no loads on taps.
 (2) Rise Time measured from 0.75V to 2.4V with no loads.