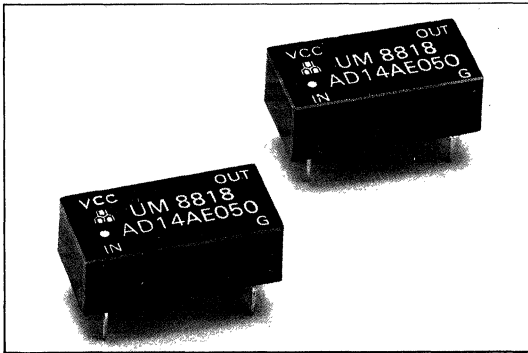




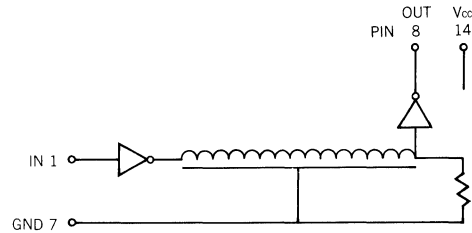
AD14AE SERIES: 14-PIN DIL-SINGLE OUTPUT



FEATURES:

- TTL and DTL Compatible
- Single Output 14-pin DIL
- Operating Temperature Range: 0°C to +70°C
- Custom Designs (delays or pin layouts) Available upon Request

● CIRCUIT CONFIGURATION:



ELECTRICAL CHARACTERISTICS

Supply Voltage Vcc: 5.0±0.25 VDC
 Logic 1 Input Voltage: 2.0V min.
 Input Current: 50µA max.
 Logic 0 Input Voltage: 0.8V max.
 Input Current: -2.0mA max.
 Logic 1 Output Voltage: 2.4V min.
 Logic 0 Output Voltage: 0.5V max.
 All measurements made at Vcc=5.0V, 25°C

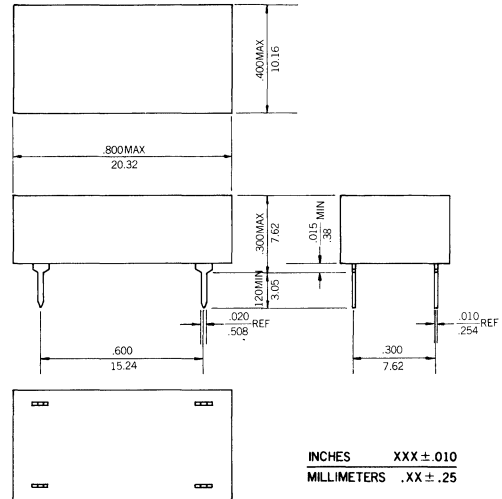
FAN OUT CAPABILITIES

Logic 0 Output: 10 TTL loads/tap max.
 20 TTL loads/unit max.
 Logic 1 Output: 20 TTL loads/unit max.

INPUT TEST CONDITIONS

Pulse Voltage: 3.2 V
 Rise Time: 3.0 ns
 Supply Current: 60 mA typical
 Pulse Width: min. 100% of total delay
 Duty Cycle: 33% or less

PACKAGE DIMENSIONS:



ELECTRICAL SPECIFICATIONS:

PART NO.	TOTAL DELAY (1)(3)ns	RISE TIME (2)ns max.	PART NUMBER	TOTAL DELAY (1)(3)ns	RISE TIME (2)ns max.
AD14AE010	10	4	AD14AE125	125	4
AD14AE020	20	4	AD14AE150	150	4
AD14AE030	30	4	AD14AE175	175	4
AD14AE040	40	4	AD14AE200	200	4
AD14AE050	50	4	AD14AE250	250	4
AD14AE060	60	4	AD14AE300	300	4
AD14AE070	70	4	AD14AE350	350	4
AD14AE080	80	4	AD14AE400	400	4
AD14AE090	90	4	AD14AE450	450	4
AD14AE100	100	4	AD14AE500	500	4

(1) Delays. measured at 1.5V level on leading edge only with no loads on taps.

(2) Rise Time measured from 0.75V to 2.4V with no loads.

(3) ±5% or ±2ns which is greater.