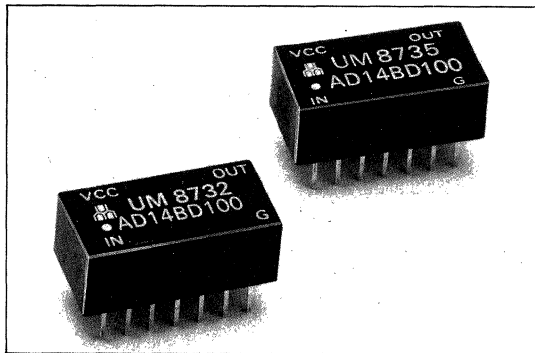




AD14BD SERIES: 14-PIN DIL 10-TAP EQUALLY-SPACED



FEATURES:

- Compatible with TTL Circuits
- 10 Equally-Spaced Delay Taps
- Operating Temperature Range: 0°C to +70°C
- Custom Designs (Delays or Pin Layouts) Available upon Request

ELECTRICAL CHARACTERISTICS

Supply Voltage Vcc: 5.0±0.25 VDC
 Logic 1 Input Voltage: 2.0V min.
 Input Current: 50µA max.
 Logic 0 Input Voltage: 0.8V max.
 Input Current: -2.0mA max.
 Logic 1 Output Voltage: 2.4V min.
 Logic 0 Output Voltage: 0.5V max
 All measurements made at Vcc=5.0V, 25°C

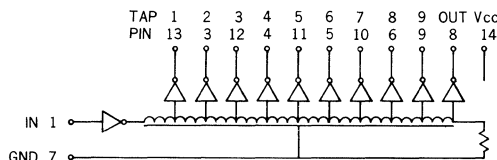
FAN OUT CAPABILITIES

Logic 0 Output: 10 TTL loads/tap max.
 :20 TTL loads/unit max.
 Logic 1 Output: 20 TTL loads/unit max.

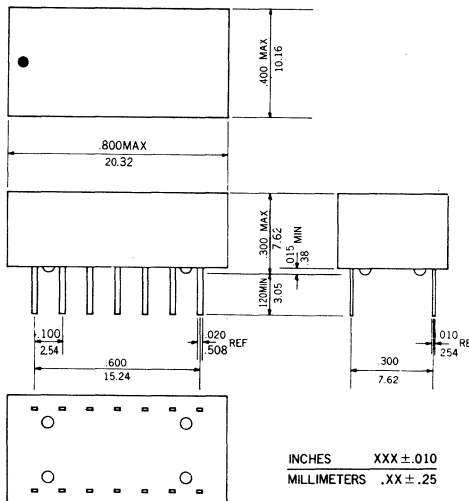
INPUT TEST CONDITIONS

Pulse Voltage: 3.2V
 Rise Time: 3.0ns
 Supply Current: 120 mA typical
 Pulse Width: min 100% of total delay
 Duty Cycle: 33% or less

CIRCUIT AND PIN CONNECTIONS:



PACKAGE DIMENSIONS:



ELECTRICAL SPECIFICATIONS:

PART NO.	TOTAL DELAY(1) ns ±5%	TAP DELAY(1) ns ±10%	RISE TIME(2) ns max.
AD14BD050	50	5±2	4
AD14BD100	100	10±2	4
AD14BD150	150	15±2	4
AD14BD200	200	20±3	4
AD14BD250	250	25±3	4
AD14BD300	300	30	5
AD14BD350	350	35	5
AD14BD400	400	40	5
AD14BD450	450	45	5
AD14BD500	500	50	5
AD14BDA00	1000	100	5

(1) Delays measured at 1.5V level on leading edge only with no loads on taps.
 (2) Rise Time measured from 0.75V to 2.4V with no loads.