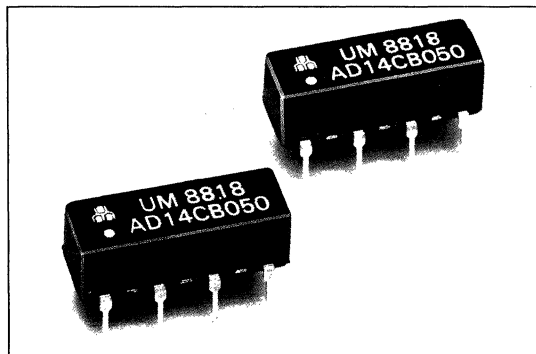


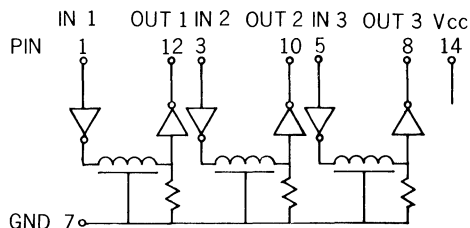
## AD14CB SERIES: 14-PIN DIP 3 INDEPENDENT AUTO INSERTABLE



### FEATURES:

- Compatible with TTL Circuits
- 3 Independent Equally Delays
- Operating Temperature Range: 0°C to +70°C
- Custom Designs (Delays or Pin Layouts) Available upon Request

### CIRCUIT AND PIN CONNECTIONS:



### ELECTRICAL CHARACTERISTICS

Supply Voltage  $V_{cc}$ :  $5.0 \pm 0.25$  VDC  
 Logic 1 Input Voltage: 2.0V min.  
                   Input Current:  $50 \mu A$  max.  
 Logic 0 Input Voltage: 0.8V max.  
                   Input Current:  $-2.0$  mA max.  
 Logic 1 Output Voltage: 2.4V min.  
 Logic 0 Output Voltage: 0.5V max.  
 All measurements made at  $V_{cc}=5.0V$ ,  $25^\circ C$

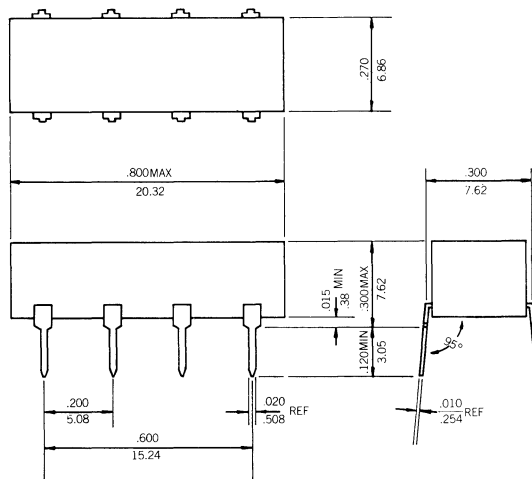
### FAN OUT CAPABILITIES

Logic 0 Output: 10 TTL loads/tap max.  
                   : 20 TTL loads/unit max.  
 Logic 1 Output: 20 TTL loads/unit max.

### INPUT TEST CONDITIONS

Pulse Voltage: 3.2 V  
 Rise Time: 3.0 ns  
 Supply Current: 60 mA typical  
 Pulse Width: min. 100% of total delay  
 Duty Cycle: 33% or less

### PACKAGE DIMENSIONS:



INCHES XXX ± .010  
 MILLIMETERS .XX ± .25

### ELECTRICAL SPECIFICATIONS:

| PART NO.  | TOTAL DELAY(1)<br>ns ± 5% | TAP DELAY(1)<br>ns | RISE TIME(2)<br>ns max. |
|-----------|---------------------------|--------------------|-------------------------|
| AD14CB025 | 25 ± 2                    | 5 ± 2              | 4                       |
| AD14CB050 | 50                        | 10 ± 2             | 4                       |
| AD14CB075 | 75                        | 15 ± 2             | 4                       |
| AD14CB100 | 100                       | 20 ± 3             | 4                       |
| AD14CB125 | 125                       | 25 ± 3             | 4                       |
| AD14CB150 | 150                       | 30 ± 3             | 4                       |
| AD14CB175 | 175                       | 35 ± 3             | 4                       |
| AD14CB200 | 200                       | 40 ± 3             | 4                       |
| AD14CB250 | 250                       | 50 ± 3.5           | 4                       |
| AD14CB300 | 300                       | 60 ± 4             | 4                       |
| AD14CB400 | 400                       | 80 ± 4             | 4                       |
| AD14CB500 | 500                       | 100 ± 5            | 4                       |

(1) Delays measured at 1.5V level on leading edge only with no loads on taps.  
 (2) Rise Time measured from .75V to 2.4V with no loads.