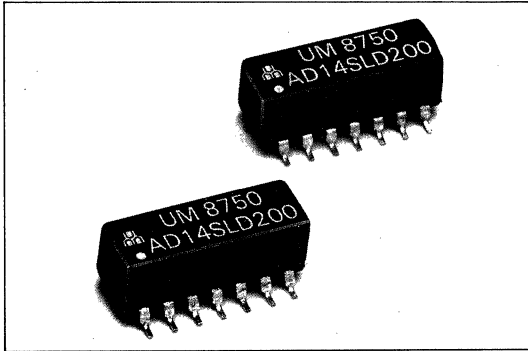




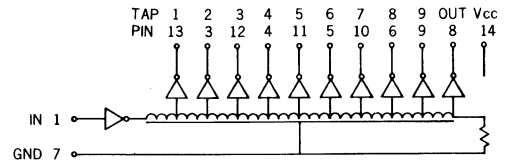
# AD14SLD SERIES: 14-PIN 10-TAP SURFACE MOUNTING, L LEAD



**FEATURES:**

- Compatible with TTL Circuits
- 10 Equally-Spaced Delay Taps
- Surface Mount L Lead Package
- Operating Temperature Range: 0°C to +70°C
- Custom Designs(Delays or Pin Layouts) Available upon Request

**CIRCUIT AND PIN CONNECTIONS:**



**ELECTRICAL CHARACTERISTICS**

Supply Voltage Vcc: 5.0±0.25 VDC  
 Logic 1 Input Voltage: 2.0V min.  
 Logic 1 Input Current: 50µA max.  
 Logic 0 Input Voltage: 0.8V max.  
 Logic 0 Input Current: -2.0mA max.  
 Logic 1 Output Voltage: 2.4V min.  
 Logic 0 Output Voltage: 0.5V max.  
 All measurements made at Vcc=5.0V, 25°C

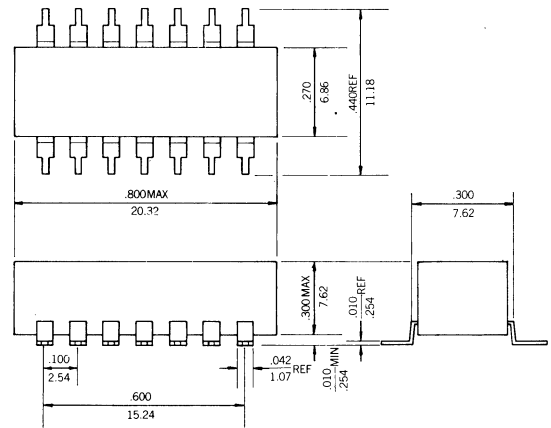
**FAN OUT CAPABILITIES**

Logic 0 Output: 10 TTL loads/tap max.  
 20 TTL loads/unit max.  
 Logic 1 Output: 20 TTL loads/unit max.

**INPUT TEST CONDITIONS**

Pulse Voltage: 3.2V  
 Rise Time: 3.0ns  
 Supply Current: 120mA typical  
 Pulse Width: min. 100% of total delay  
 Duty Cycle: 33% or less

**PACKAGE DIMENSIONS:**



INCHES XXX ± .010  
 MILLIMETERS .XX ± .25

**ELECTRICAL SPECIFICATIONS:**

| PART NO.   | TOTAL DELAY(1)<br>ns ± 5% | TAP DELAY(1)<br>ns ± 10% | RISE TIME(2)<br>ns max. |
|------------|---------------------------|--------------------------|-------------------------|
| AD14SLD050 | 50                        | 5 ± 2                    | 4                       |
| AD14SLD100 | 100                       | 10 ± 2                   | 4                       |
| AD14SLD150 | 150                       | 15 ± 2                   | 4                       |
| AD14SLD200 | 200                       | 20 ± 3                   | 4                       |
| AD14SLD250 | 250                       | 25 ± 3                   | 4                       |
| AD14SLD300 | 300                       | 30                       | 5                       |
| AD14SLD350 | 350                       | 35                       | 5                       |
| AD14SLD400 | 400                       | 40                       | 5                       |
| AD14SLD450 | 450                       | 45                       | 5                       |
| AD14SLD500 | 500                       | 50                       | 5                       |

(1) Delays, measured at 1.5V level on leading edge only with no loads on taps.  
 (2) Rise Time measured from 0.75V to 2.4V with no loads.