

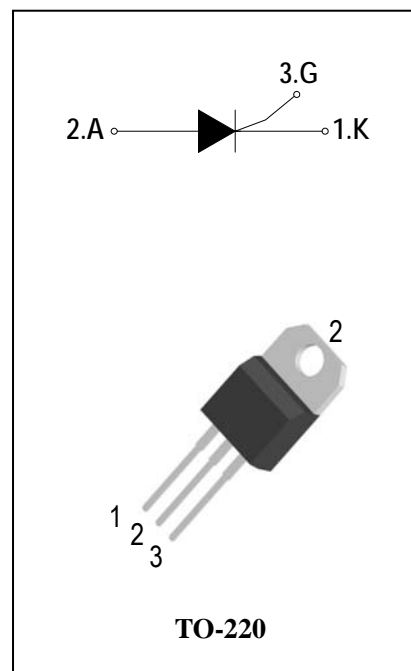
SCRs

General Description

The 30A SCR series of silicon controlled rectifiers, with high ability to withstand the shock loading of large current, provide high dv/dt rate with strong resistance to electromagnetic interference. They are especially recommended for use on solid state relay, motorcycle, power charger, T-tools etc.

Features

- ◆ Repetitive Peak Off-State Voltage : 600V and 800V
- ◆ R.M.S On-State Current ($I_{T(RMS)}=30\text{ A}$)
- ◆ These are Pb-Free Devices



Absolute Maximum Ratings

| Symbol | Items | Conditions | | Rated | Unit |
|--------------|--|---|----------|------------|----------------------|
| V_{DRM} | Repetitive Peak Off-State Voltage | $T_j=25^\circ\text{C}$ | ADS30A60 | 600 | V |
| V_{RRM} | Repetitive peak reverse voltage | | ADS30A80 | 800 | V |
| $I_{T(AV)}$ | Average On-State Current | Half Sine Wave , $T_c = 103^\circ\text{C}$ | | 20 | A |
| $I_{T(RMS)}$ | R.M.S On-State Current | Half Sine Wave , $T_c = 103^\circ\text{C}$ | | 30 | A |
| I_{TSM} | Surge On-State Current | 1/2 Cycle, Sine Wave Non-Repetitive, $t_p=10\text{ms}(50\text{Hz})T_j = 25^\circ\text{C}$ | | 330 | A |
| I^2t | I^2t for Fusing | $T_j = 25^\circ\text{C}, t_p = 10\text{ms}$ | | 550 | A^2S |
| P_{GM} | Forward Peak Gate Power Dissipation | $T_j = 125^\circ\text{C}, \text{Pulse Width} \leq 20\mu\text{s}$ | | 5 | W |
| $P_{G(AV)}$ | Forward Average Gate Power Dissipation | $T_j = 25^\circ\text{C}, t_p = 10\text{ms}$ | | 1 | W |
| I_{GM} | Peak Gate Current | $T_j = 125^\circ\text{C}, \text{Pulse Width} \leq 20\mu\text{s}$ | | 4 | A |
| T_j | Operating Junction Temperature | | | - 40 ~ 125 | $^\circ\text{C}$ |
| T_{STG} | Storage Temperature | | | - 40 ~ 150 | $^\circ\text{C}$ |



Electrical Characteristics ($T_j = 25^\circ\text{C}$ unless otherwise specified)

| Symbol | Items | Conditions | | ADS30A60/80 | | Unit |
|------------------------|---|--|------|-------------|-------|--------------------|
| | | | | S | Blank | |
| I_{DRM} I_{RRM} | Peak Forward Reverse Blocking Current | $V_{DRM} = V_{RRM}$ $T_j = 25^\circ\text{C}$ | Max. | 10 | | μA |
| | | $V_{DRM} = V_{RRM}$ $T_j = 125^\circ\text{C}$ | | 4 | | mA |
| V_{TM} | Peak On-State Voltage | $I_{TM} = 55\text{A}$, $t_p = 380 \mu\text{s}$ | Max. | 1.6 | | V |
| V_{GD} | Non-Trigger Gate Voltage | $V_D = V_{DRM}$ $R_L = 3.3 \text{ k}\Omega$ $T_j = 125^\circ\text{C}$ | Min. | 0.2 | | V |
| V_{GT} | Gate Trigger Voltage | $V_D = 12\text{V}$, $R_L = 33\Omega$ | Max. | 1.3 | | V |
| I_{GT} | Gate Trigger Current | | Max. | 15 | 30 | mA |
| I_H | Holding Current | $I_T = 0.5\text{A}$ | Max. | 30 | 40 | mA |
| I_L | Latching Current | $I_G = 1.2 I_{GT}$ | Max. | 50 | 50 | mA |
| dV/dt | Critical Rate of Rise of Off-State Voltage | $V_D = 2/3 V_{DRM}$ gate open $T_j = 125^\circ\text{C}$ | Min. | 1000 | 1500 | V/ μs |
| $R_{th(j-c)}$ | Junction to case (AC) | | Max. | 1.7 | | $^\circ\text{C/W}$ |
| $R_{th(j-a)}$ | Junction to ambient | | Max. | 60 | | $^\circ\text{C/W}$ |

FIG.1: Maximum average power dissipation (Single phase half wave)

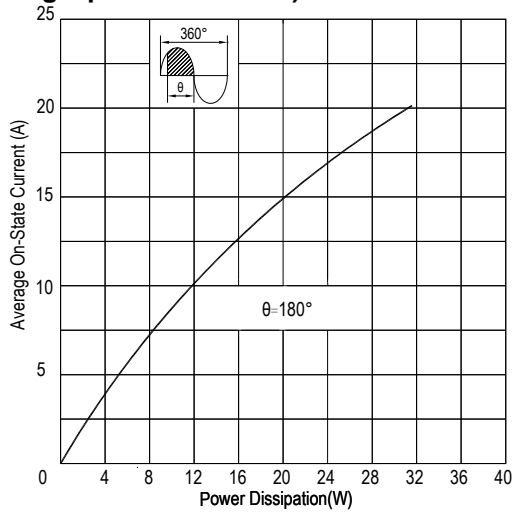


FIG.2: Average on-state current VS Allowable case Temperature(Single phase half wave)

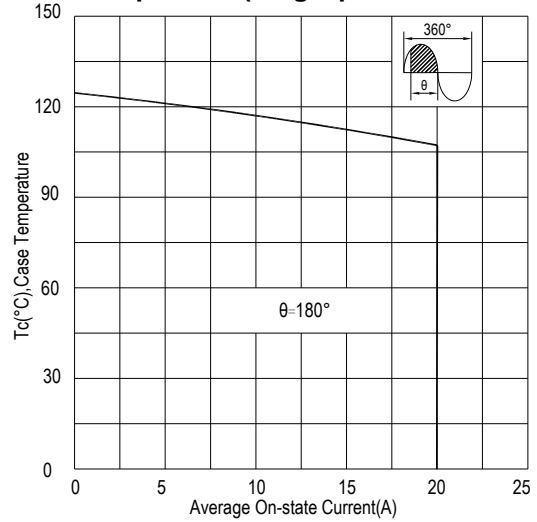


FIG.3: Gate trigger current VS Junction temperature

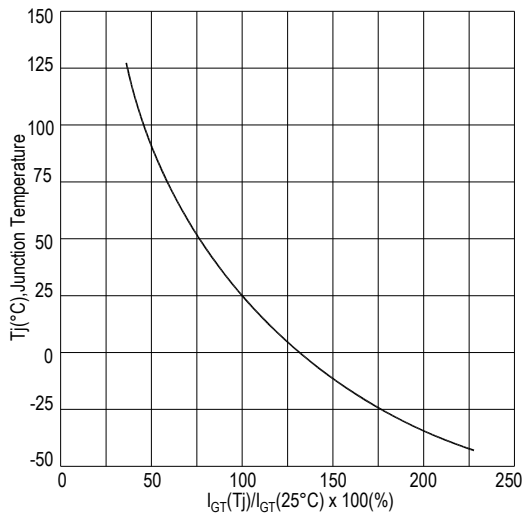


FIG.4: Rated surge on-state current (Non-Repetitive)

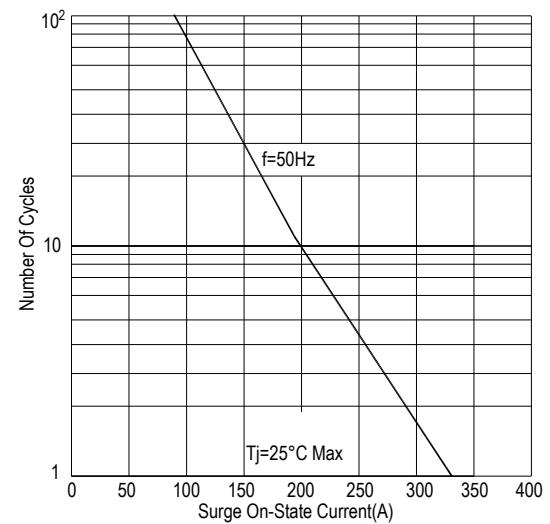


FIG.5: On-state characteristics(Max)

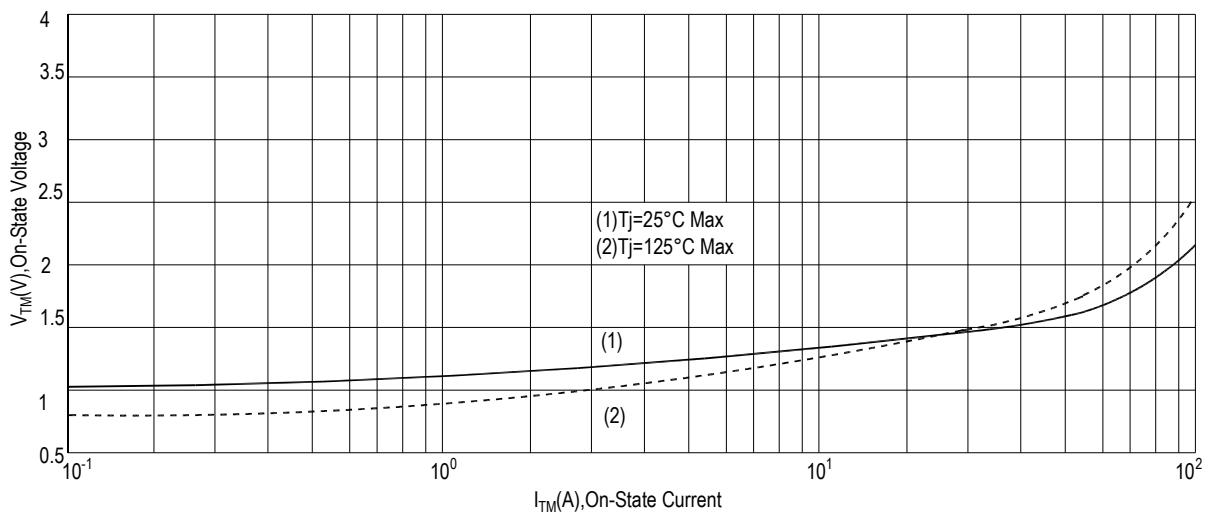


FIG.6: Holding current and Latching current VS Junction temperature

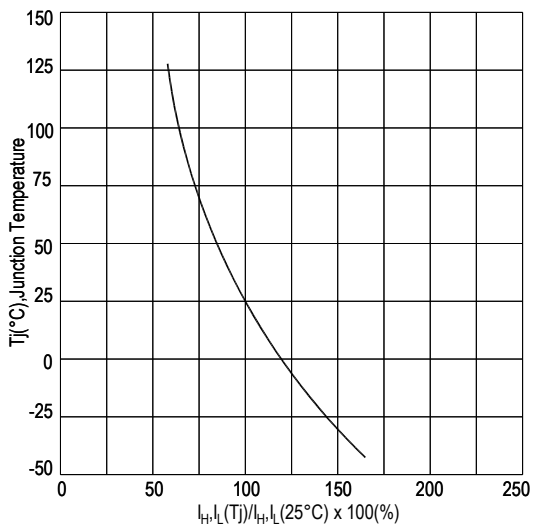
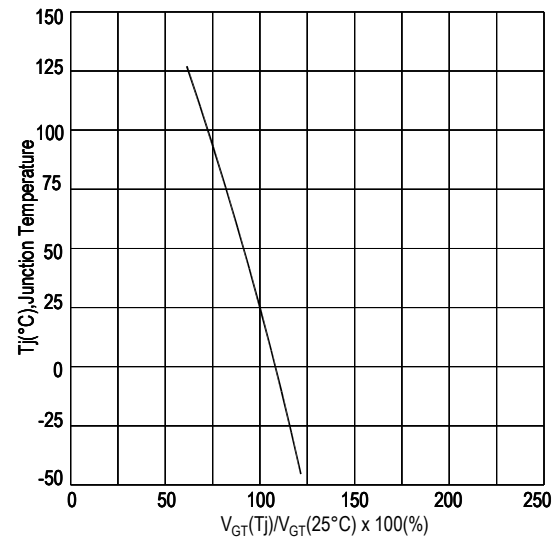
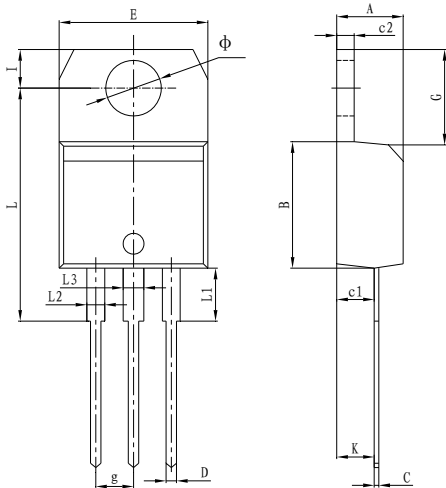


FIG.7: Gate trigger voltage VS Junction temperature



PACKAGE MECHANICAL DATA

TO-220 Package Dimension



| Symbol | Dimensions In Millimeters | | Dimensions In Inches | |
|--------|------------------------------|-------|-------------------------|-------|
| | Min | Max | Min | Max |
| A | 4.40 | 4.60 | 0.173 | 0.181 |
| B | 9.00 | 9.30 | 0.354 | 0.366 |
| C | 0.40 | 0.60 | 0.015 | 0.023 |
| c1 | 2.00 | 2.60 | 0.078 | 0.102 |
| c2 | 1.23 | 1.32 | 0.048 | 0.051 |
| D | 0.70 | 1.00 | 0.027 | 0.039 |
| E | 10.00 | 10.40 | 0.393 | 0.409 |
| g | 2.40 | 2.70 | 0.094 | 0.106 |
| G | 6.20 | 6.80 | 0.244 | 0.267 |
| I | 2.65 | 2.95 | 0.104 | 0.116 |
| L | 15.80 | 16.80 | 0.622 | 0.661 |
| L1 | 3.75 | | 0.147 | |
| L2 | 1.14 | 1.70 | 0.044 | 0.066 |
| L3 | 1.14 | 1.70 | 0.044 | 0.066 |
| Φ | 3.60 | 3.90 | 0.141 | 0.153 |
| K | 2.60TYP | | 0.102TYP | |

Making Diagram

ADV XXXX
ADS30A80S
XXXH ○ XX

ADV:Logo
ADS30A80S:Part number
X:Internal control code
H:Halogen Free

AD S 30 A 80 # T(S)(W)

| | | | |
|------------------------------|-----------------------|--|-------------------------|
| ADVANCED | Internal control code | Current:30=30A | Voltage:60=600V 80=800V |
| SCR Series | | Sensitivity and type: T=0.2mA S=15mA Blank=30mA W=80mA | |
| Package explain:Blank=TO-220 | | | |

Ordering information

| Part number | Package | Marking | Packing | Quantity |
|-------------|---------|-----------|---------|----------|
| ADS30A60# | TO-220 | ADS30A60# | Tube | 50pcs |
| ADS30A80# | TO-220 | ADS30A80# | Tube | 50pcs |

Note:# = Gate Trigger Current Sensitivity and type

Notice

1. All information included in this document such as product data, diagrams, charts, programs, algorithms, and application circuit examples, is current as of the date this document is issued. Such information, however, is subject to change without any prior notice. Before purchasing or using any ADV products listed in this document, please confirm the latest product information with a ADV sales office. Also, please pay regular and careful attention to additional and different information to be disclosed by ADV such as that disclosed through our website. (<http://www.advsemi.com>)
2. ADV has used reasonable care in compiling the information included in this document, but ADV assumes no liability whatsoever for any damages incurred as a result of errors or omissions in the information included in this document.
3. You should use the products described herein within the range specified by ADV, especially with respect to the maximum rating, operating supply voltage range, movement power voltage range, heat radiation characteristics, installation and other product characteristics. ADV shall have no liability for malfunctions or damages arising out of the use of ADV products beyond such specified ranges.
4. When using or otherwise relying on the information in this document, you should evaluate the information in light of the total system before deciding about the applicability of such information to the intended application. ADV makes no representations, warranties or guaranties regarding the suitability of its products for any particular application and specifically disclaims any liability arising out of the application and use of the information in this document or ADV products.
5. Although ADV endeavors to improve the quality and reliability of its products, IC products have specific characteristics such as the occurrence of failure at a certain rate and malfunctions under certain use conditions. Please be sure to implement safety measures to guard against the possibility of physical injury, and injury or damage caused by fire in the event of the failure of a ADV product, such as safety design for hardware and software including but not limited to redundancy, fire control and malfunction prevention, appropriate treatment for aging degradation or any other applicable measures. Among others, since the evaluation of microcomputer software alone is very difficult, please evaluate the safety of the final products or system manufactured by you.
6. This document is provided for reference purposes only so that ADV customers may select the appropriate ADV products for their use. ADV neither makes warranties or representations with respect to the accuracy or completeness of the information contained in this document nor grants any license to any intellectual property rights or any other rights of ADV or any third party with respect to the information in this document.
7. ADV shall have no liability for damages or infringement of any intellectual property or other rights arising out of the use of any information in this document, including, but not limited to, product data, diagrams, charts, programs, algorithms, and application circuit examples.
8. This document may not be reproduced or duplicated, in any form, in whole or in part, without prior written approval from ADV.