



# **SPECIFICATION FOR LCD MODULE**

**MODULE NO: AFE640480I-5.6N-9270A-T**  
**REVISION NO: A01**

Customer's Approval:

--

	SIGNATURE	DATE
PREPARED BY (RD ENGINEER)		
CHECKED BY		
APPROVED BY		

### DOCUMENT REVISION HISTORY

Sample Version	Doc. Version	DATE	DESCRIPTION	CHECKED BY
01	A	2011-01-13	First Release.	

## CONTENTS

<b>List</b>	<b>Description</b>	<b>Page No.</b>
<b>1</b>	GENERAL DESCRIPTION	4
<b>2</b>	MECHANICAL SPECIFICATIONS	4
<b>3</b>	BLOCK DIAGRAM	5
<b>4</b>	DIMENSIONAL OUTLINE	6
<b>5</b>	PIN DESCRIPTION	7
<b>6</b>	TIMING CHARACTERISTICS	8
<b>7</b>	ELECTRICAL CHARACTERISTICS	8
<b>8</b>	AC CHARACTERISTICS	10
<b>9</b>	OPTICAL CHARACTERISTICS	11
<b>10</b>	PACKAGE	13
<b>11</b>	RELIABILITY	14
<b>12</b>	SPECIFICATION OF QUALITY ASSURANCE	15
<b>13</b>	GENERAL PRECAUTIONS	24

## **1. GENERAL DESCRIPTION:**

**Display & LCD Type:** 640 \* RGB \* 480 ,TFT-Panel

**Viewing Direction:** 6 O' clock

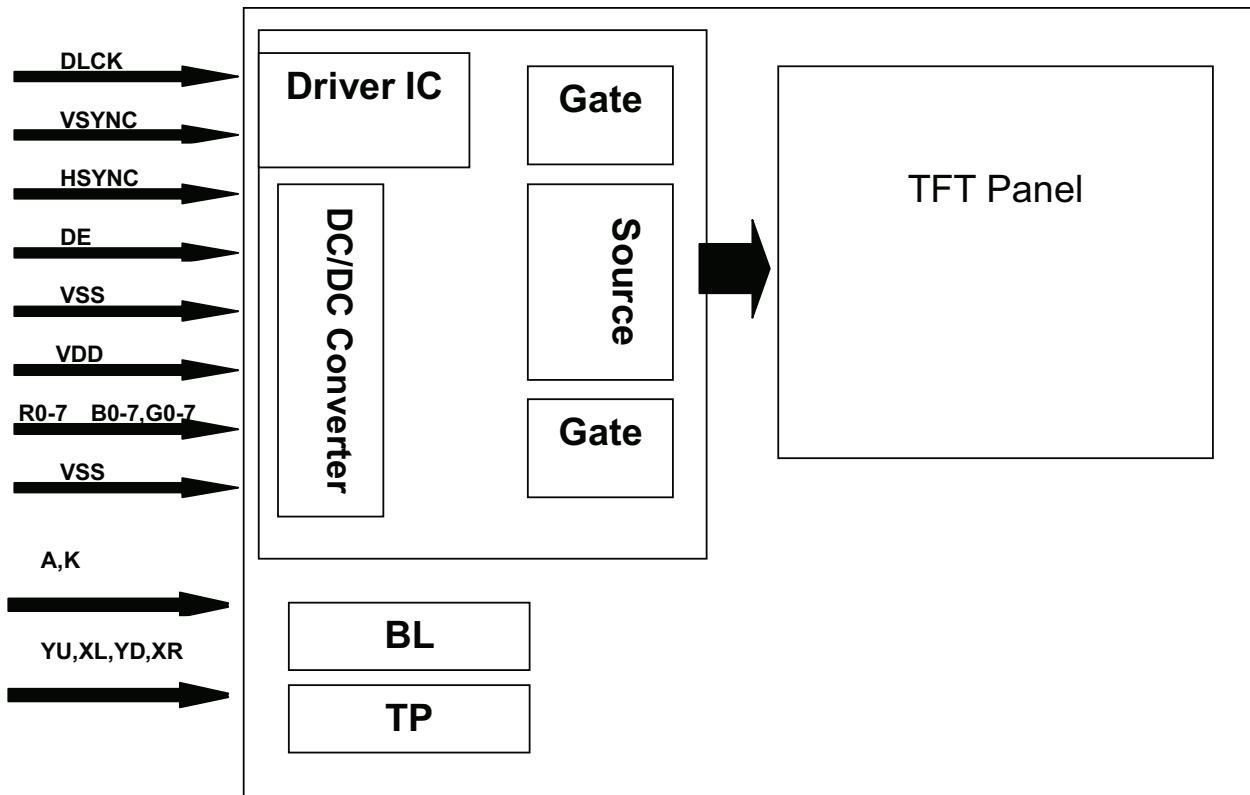
**Backlight Type:** White LED

## **2. MECHANICAL SPECIFICATIONS:**

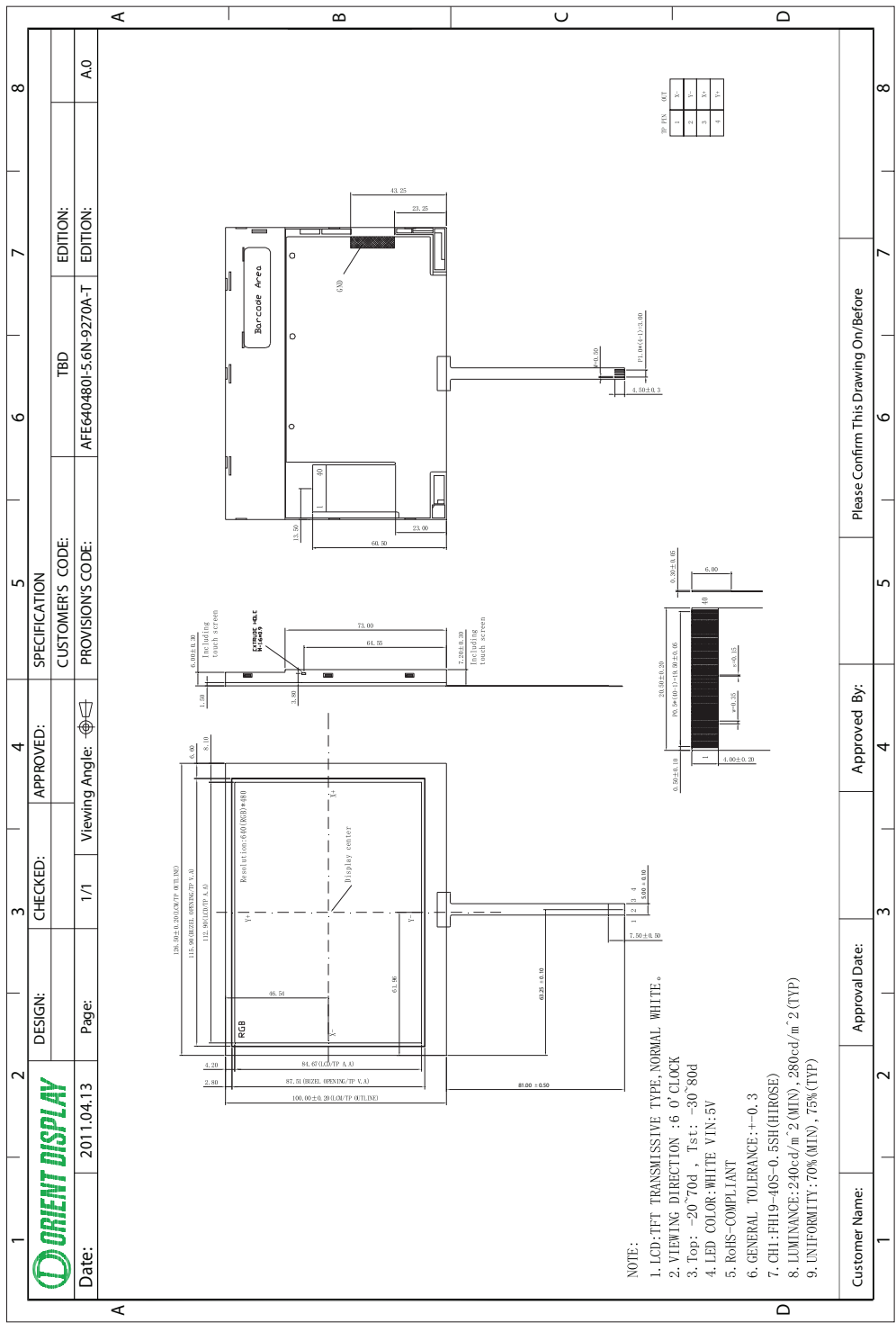
ITEM	SPECIFICATION	UNIT
DISPLAY SIZE	5.6	inch
OUTLINE DIMENSIONS	126.5*100*7.2	mm
DISPLAY MODE	Normally White	-
INTERFACE TYPE	RGB	-

**\*See attached drawing for details.**

### 3.BLOCK DIAGRAM:



4.DIMENSIONAL OUTLINE:



## **5. PIN DESCRIPTION:**

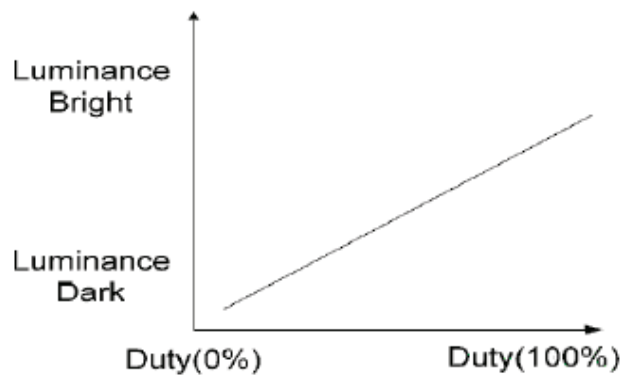
<b>NO.</b>	<b>PIN</b>	<b>I/O</b>	<b>Description</b>
<b>1</b>	<b>VLED</b>	<b>P</b>	Power voltage for LED Driver.
<b>2</b>	<b>VLED</b>	<b>P</b>	Power voltage for LED Driver.
<b>3</b>	<b>ADJ</b>	<b>I</b>	Adjust the led brightness with PWM Pulse.
<b>4</b>	<b>GLED</b>	<b>P</b>	Ground for LED circuit.
<b>5</b>	<b>GLED</b>	<b>P</b>	Ground for LED circuit.
<b>6</b>	<b>VCC</b>	<b>P</b>	Power voltage for digital circuit.
<b>7</b>	<b>VCC</b>	<b>P</b>	Power voltage for digital circuit.
<b>8</b>	<b>MODE</b>	<b>I</b>	DE or HV mode control.
<b>9</b>	<b>DE</b>	<b>I</b>	Data enable
<b>10</b>	<b>VS</b>	<b>I</b>	Vsync signal input
<b>11</b>	<b>HS</b>	<b>I</b>	Hsync signal input
<b>12</b>	<b>GND</b>	<b>P</b>	Power ground
<b>13</b>	<b>B5</b>	<b>I</b>	BLUE Data Signal(MSB)
<b>14</b>	<b>B4</b>	<b>I</b>	BLUE Data Signal
<b>15</b>	<b>B3</b>	<b>I</b>	BLUE Data Signal
<b>16</b>	<b>GND</b>	<b>P</b>	Power ground
<b>17</b>	<b>B2</b>	<b>I</b>	BLUE Data Signal
<b>18</b>	<b>B1</b>	<b>I</b>	BLUE Data Signal
<b>19</b>	<b>B0</b>	<b>I</b>	BLUE Data Signal(LSB)
<b>20</b>	<b>GND</b>	<b>P</b>	Power ground
<b>21</b>	<b>G5</b>	<b>I</b>	GREEN Data Signal(MSB)
<b>22</b>	<b>G4</b>	<b>I</b>	GREEN Data Signal
<b>23</b>	<b>G3</b>	<b>I</b>	GREEN Data Signal
<b>24</b>	<b>GND</b>	<b>P</b>	Power ground
<b>25</b>	<b>G2</b>	<b>I</b>	GREEN Data Signal
<b>26</b>	<b>G1</b>	<b>I</b>	GREEN Data Signal
<b>27</b>	<b>G0</b>	<b>I</b>	GREEN Data Signal(LSB)
<b>28</b>	<b>GND</b>	<b>P</b>	Power ground
<b>29</b>	<b>R5</b>	<b>I</b>	RED Data Signal(MSB)
<b>30</b>	<b>R4</b>	<b>I</b>	RED Data Signal
<b>31</b>	<b>R3</b>	<b>I</b>	RED Data Signal
<b>32</b>	<b>GND</b>	<b>P</b>	Power ground
<b>33</b>	<b>R2</b>	<b>I</b>	RED Data Signal
<b>34</b>	<b>R1</b>	<b>I</b>	RED Data Signal
<b>35</b>	<b>R0</b>	<b>-</b>	RED Data Signal(LSB)
<b>36</b>	<b>GND</b>	<b>P</b>	Power ground
<b>37</b>	<b>DCLK</b>	<b>I</b>	DOT CLOCK
<b>38</b>	<b>GND</b>	<b>P</b>	Power ground
<b>39</b>	<b>L/R</b>	<b>I</b>	Select left or right scanning direction.
<b>40</b>	<b>U/D</b>	<b>I</b>	Select up or down scanning direction.

## TOUCH PANEL PIN

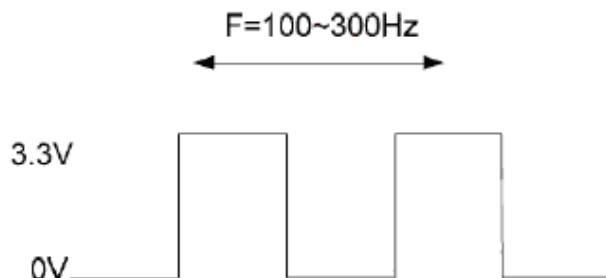
<b>YU</b>	/	I	Touch Panel PIN
<b>XR</b>	/	I	Touch Panel PIN
<b>YD</b>	/	I	Touch Panel PIN
<b>XL</b>	/	I	Touch Panel PIN

Note: I: input,O:output,P:Power

Note1: ADJ adjust brightness to control Pin,Pulse duty the bigger the brighter.



Note 2: ADJ signal=0~3.3V;Operating frequency: 100~300Hz.



Note 3: DE Mode: Mode="H", HS floating and VS floating.

HV Mode: Mode="L" and DE floating.

Note 4: Selection of scanning mode

Setting of scan control input		Scanning direction
U/D	L/R	
GND	V <sub>CC</sub>	Up to down, left to right
V <sub>CC</sub>	GND	Down to up, right to left
GND	GND	Up to down, right to left
V <sub>CC</sub>	V <sub>CC</sub>	Down to up, left to right



## 6. MAXIMUM ABSOLUTE LIMIT:

Item	Symbol	Value	Unit
Power supply voltage for logic	$V_{DD}$	3.0-3.6	V
Input voltage	$V_{in}$	$V_{DD}+0.3$	V
Operating temperature	$T_{opr}$	-20 to 70	°C
Storage temperature	$T_{stg}$	-30 to 80	°C

**Note:** Note1: Absolute maximum rating is the limit value beyond which the IC maybe broken.

They do not assure operations.

Note2: Background color changes slightly depending on ambient temperature. This Phenomenon is reversible.

$T_a \leq 70^\circ\text{C}$ : 75%RH max

$T_a > 70^\circ\text{C}$ : absolute humidity must be lower than the humidity of 75%RH at  $70^\circ\text{C}$

Note3:  $T_a$  at  $-30^\circ\text{C}$  will be <48hrs, at  $80^\circ\text{C}$  will be <120hrs

## 7.ELECTRICAL CHARACTERISTICS

### 7.1 DC Characteristics ( $V_{DD}=3.3\text{V}$ , $T_a=25^\circ\text{C}$ )

Item	Symbol	Min	Type	Max	Unit	Test condition
Operating voltage	$V_{DD}$	3.1	3.3	3.5	V	-
Supply current	$I_{DD}$	-	130	200	mA	$V_{DD}=3.3\text{V}$ , $T_a=25^\circ\text{C}$
Input voltage	$V_{IH}$	$0.7V_{DD}$	-	$V_{DD}$	V	-
	$V_{IL}$	0	-	$0.3V_{DD}$	V	
Input leakage current	$I_{IL}$	-	TBD	-	$\mu\text{A}$	$V_{IN}=V_{DD}$ or $V_{SS}$

Note: Voltage greater than above may damage the module.

All voltages are specified relative to  $V_{SS}=0\text{V}$ .

### 7.2 Backlight Electrical-optical Characteristics

#### 1. Stander Lamp Styles (Edge Lighting Type):

The LED chips are distributed over the edge light area of the illumination unit, which gives the less power consumption:

#### 2. The Main Advantages of the LED Backlight are as following:

2.1 The brightness of the backlight can simply be adjusted by a resistor or a potentiometer.

#### 3. Data About LED Backlight:

Item	Symbol	MIN	TYP	MAX	UNIT	Test Condition	Note
Supply Voltage	Vf	4.6	5.0	5.4	V	If=380 mA	-
Supply Current	If	-	380	450	mA	-	-
Reverse Voltage	Vr	-	-	5	V	-	-
Power dissipation	Pd	-	1900	-	mW	-	-
Luminous Intensity for LCM	-	230	280	-	Cd/m <sup>2</sup>	If=380mA	-
Uniformity for LCM	-		75	-	%	If=380mA	-
Backlight Color	White						

NOTE:

1. Uniformity = Min/Max \* 100%

2. LED life time defined as follows:

The final brightness is at 70% of original brightness;

Measured Method: (X\*Y: Light Area);

### 7.3.Touch screen panel specifications:

Item	Symbol	Min.	Type.	Max.	unit	Remark
Transparency	-	-	82	-	%	JIS K-7105
Haze	-	-	1	-	%	JIS K-7105
Hardness Of Surface	-	-	3	-	H	500g/45°
FPC Peeling Strength	-	5		-	N	Upward 90°
FPC Bending	-	-	3	-	cycle	R=1.0, 90°
Input Force	-	-		80	gf	-
Rated Voltage	V touch		5	7	V	DC
X-axis Resistance	Rx	150		850		FPC PIN
X-axis Resistance	Ry	200		950		
Linearity	-		±1.5	±2.0	%	-
Chattering	-	-	-	10	ms	-
Insulation Resistance	Ri	25	-	-	MΩ	-
Notes Life	-	1,000,000	-	-	Times	-
Input Life	-	1,000,000	-	-	Times	-

## 8. AC CHARACTERISTICS (V<sub>DD</sub>=3.3V, TA=25°C)

### 8.1 Input Signal Characteristics:

#### Input/Output Timing

Item	Symbol	Values			Unit	Remark
		Min	Typ	Max		
PXLCLK clock time	Tclk	-	-	37	ns	
PXLCLK pulse duty	Tcwh	40	50	60	%	Tclk
DATA setup time	Tdsu	12	-	-	ns	DATA to PXLCLK
DATA hold time	Tdhd	12	-	-	ns	DATA to PXLCLK
DE setup time	Tesu	12	-	-	ns	DE to PXLCLK
VSYNC setup time	Tvst	12	-	-	ns	
VSYNC hold time	Tvhd	12	-	-	ns	
HSYNC setup time	Thst	12	-	-	Ns	
HSYNC hold time	Thhd	12	-	-	Ns	
HSYNC period time	Th	60	63.56	67	us	
HSYNC width	Thwh	1	-	-	Tclk	
VSYNC width	Tvwh	1	-	-	Th	
HSYNC to LKIN	Thc	-	-	1	Tclk	

#### DE Mode Input Timing Limitation

DE Mode	Values			Unit	Remark
	Min	Typ	Max		
TCLK	33.3	39.7	-	ns	1tclk
THC	48	160	765	tclk	
THD	640	640	640	tclk	
TH	688	800	1405	tclk	1TH-1line
TVC	6	45	255	line	
TVD	480	480	480	line	
TV	486	525	735	line	1TV-1field

HV Mode	Values			Unit	Remark
	Min	Typ	Max		
Tclk	33.3	39.7	-	ns	1tclk
Thwh	-	10	-	tclk	
Thbp	-	134	-	tclk	
Thfp	-	16	-	tclk	1TH-1line
THD	-	640	-	tclk	
TH	-	800	-	line	
Tvwh	-	2	-	line	
Tvbp	-	11	-	line	
Tvfp	-	32	-	line	
TVD	-	480	-	line	
TV	-	525	-	line	1TV-1field

## 8.2 Clock and Data Input Waveform:

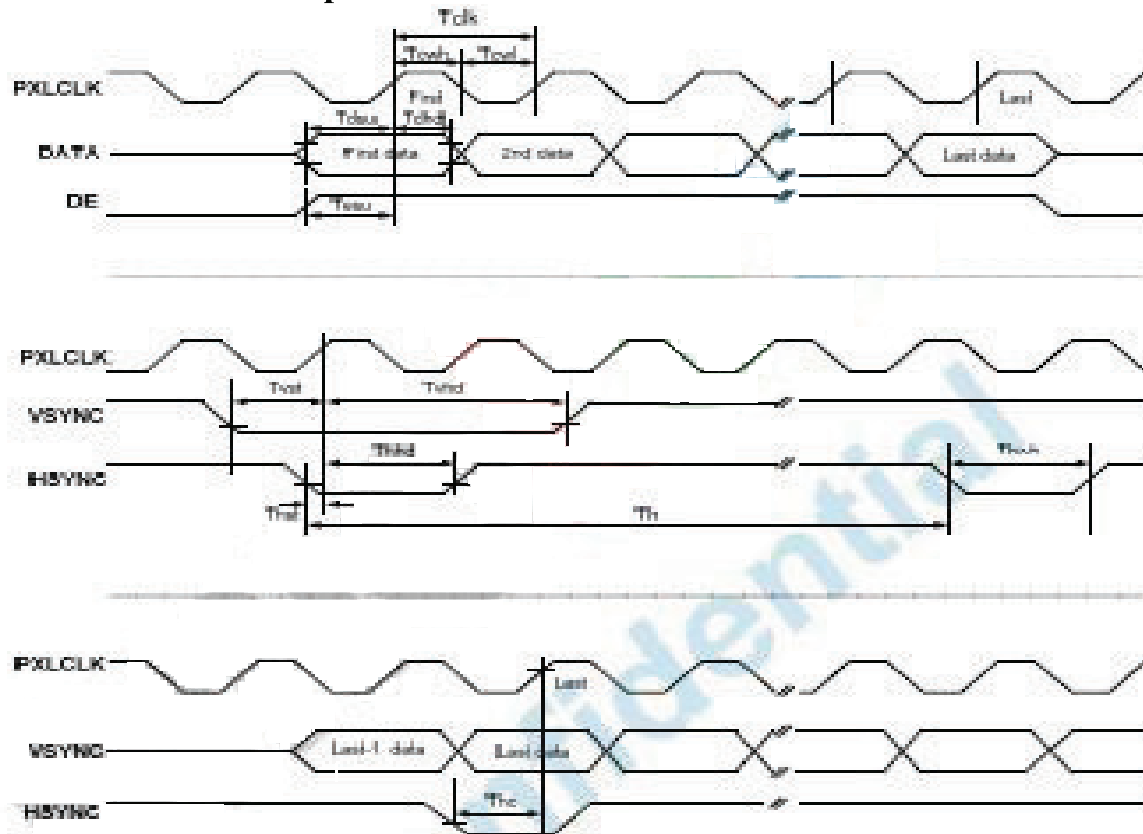


Fig.3-1 Clock and Data Input Timing Diagram

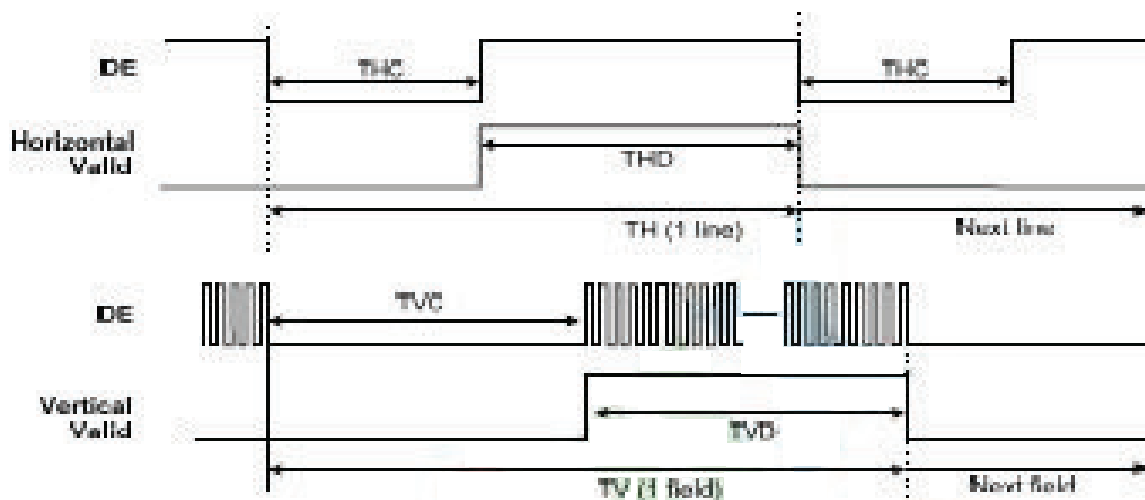


Fig.3-2 DE Mode Input Timing

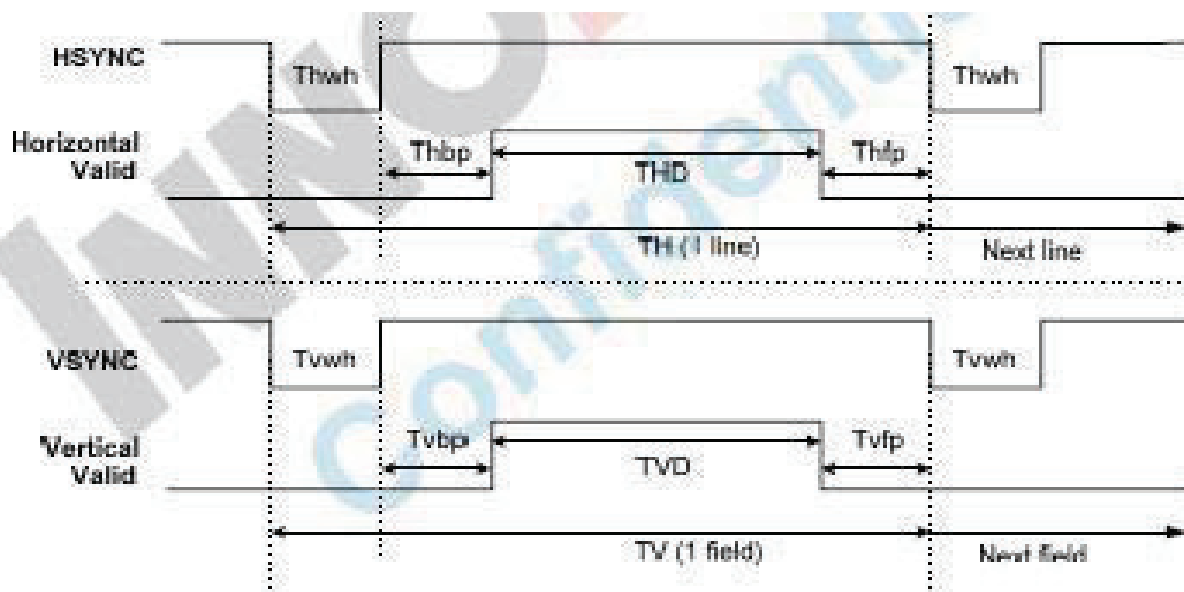


Fig.3-3 HV Mode Input Timing

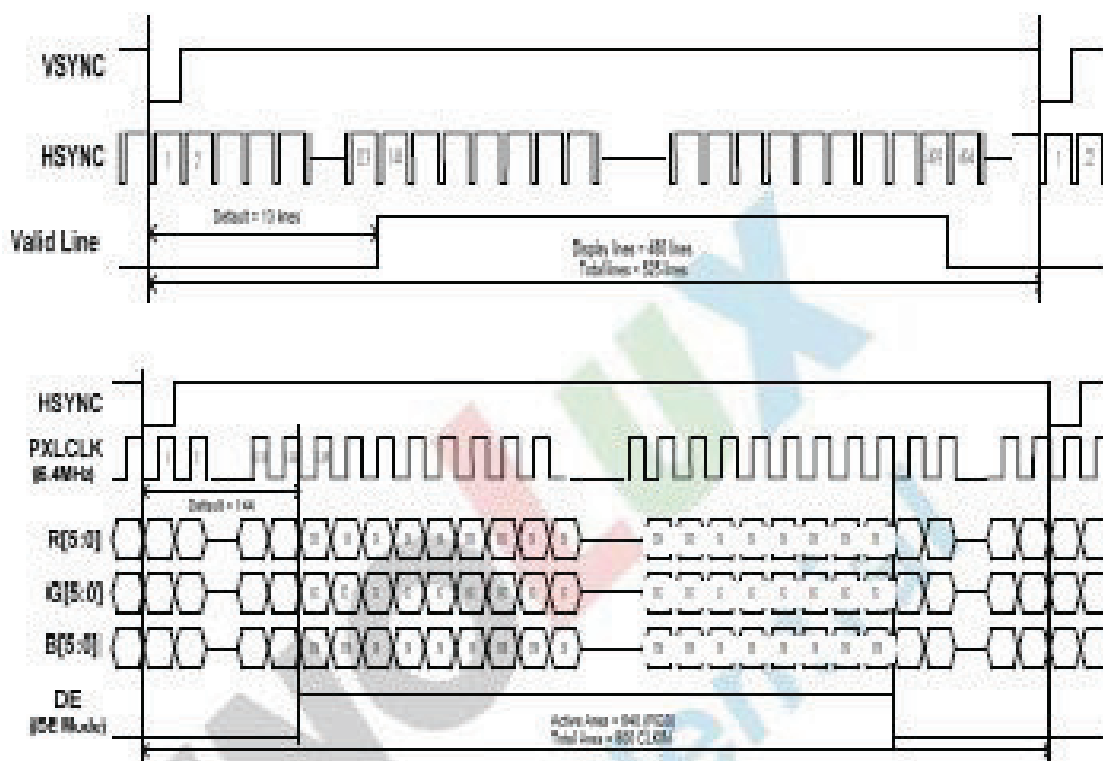
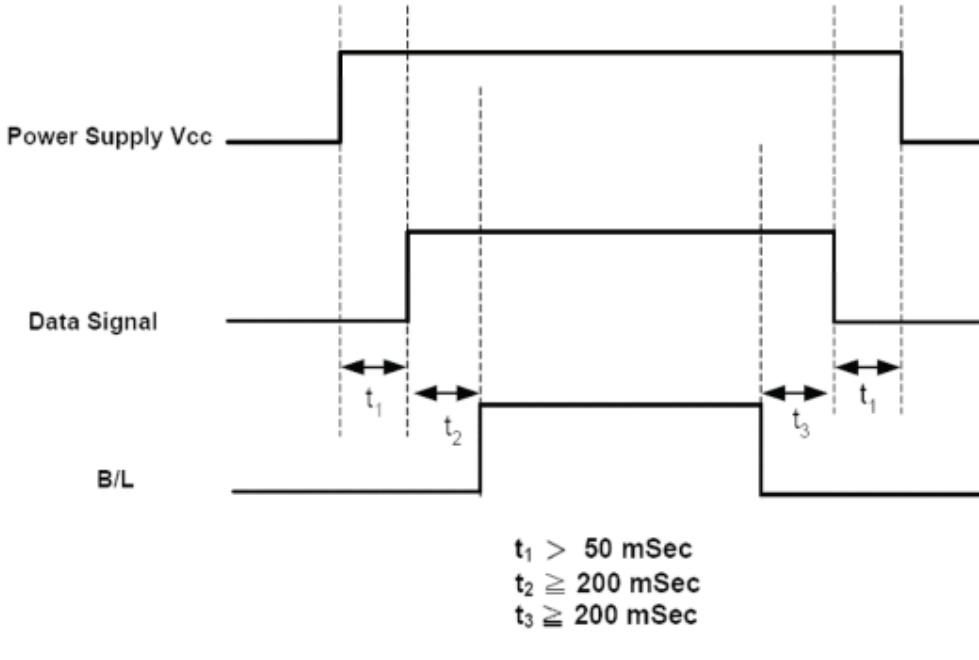


Fig. 3-4 18 bit RGB mode for 640 x(RGB)x 480

### 8.3 Power Sequence



Note: Data Signal includes DCLK, DE, HS, VS, R0~ R5, G0~ G5, B0~ B5.

**Note :**

- (1) The supply voltage of the external system for the module input should be the same as the definition of  $V_{DD}$ .
- (2) Apply the lamp voltage within the LCD operation range. When the back-light turns on before the LCD operation or the LCD turns off before the back-light turns off, the display may momentarily become white.
- (3) In case of  $V_{DD}$  = off level, please keep the level of input signal on the low or keep a high impedance.
- (4) TP4 should be measured after the module has been fully discharged between power off and on period.
- (5) Interface signal shall not be kept at high impedance when the power is on.

## 9. OPTICAL CHARACTERISTICS:

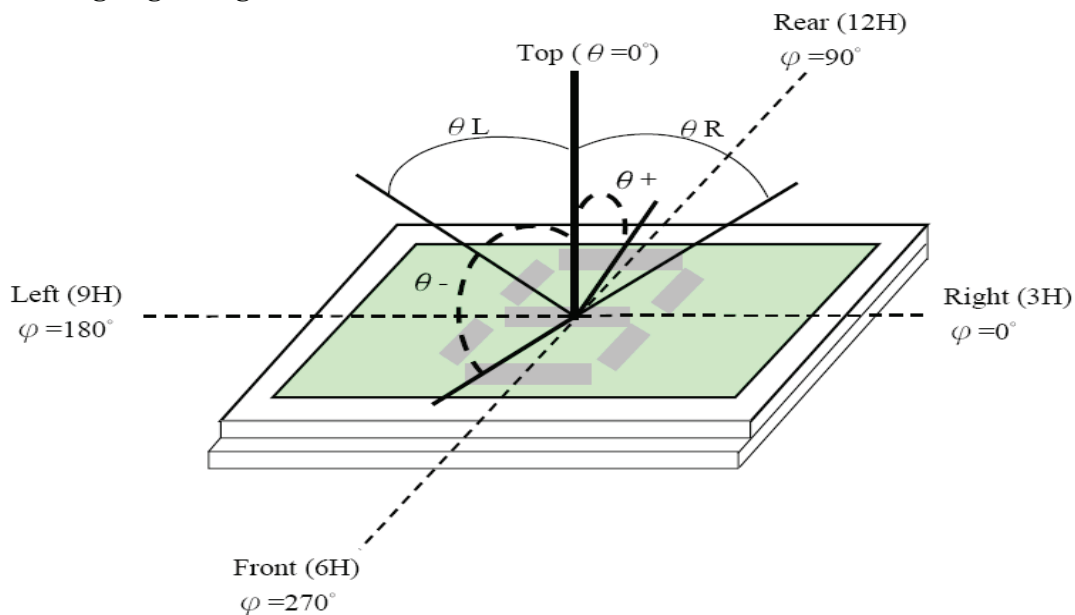
No.	ITEM		Symbol	Conditions	Specification			Unit	Note
					Min	Typ	Max		
1	Response Time		Tr+Tf	25°C	-	25	-	Ms	(1)(2)
2	Transmittance (With PL)		T(%)	-	-	7.1	-	-	-
3	Contrast Rate		Cr	$\theta=0$ , Normal viewing angle	400	500	-	-	(1)(3)
4	Viewing Angle	Hor.	$\theta R$	CR>10	60	70	-	Deg	-
			$\theta L$		60	70	-		
		Ver.	$\theta +$		40	50	-		
			$\theta -$		60	70	-		

Measure Conditions:

1. Measure surrounding : dark room;
2. Ambient temperature:  $25\pm 2^\circ\text{C}$ ;
3. 30min.warm-up time.

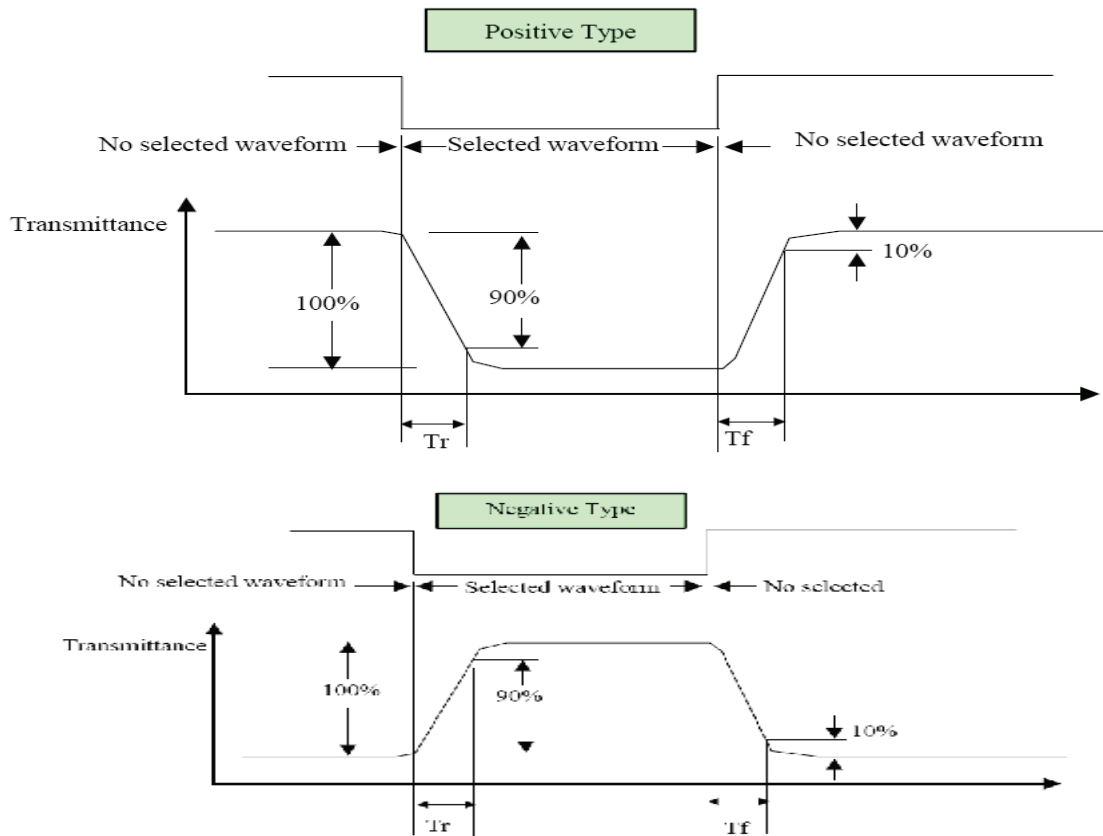
### Note Definition:

Note(1)Viewing angle range:

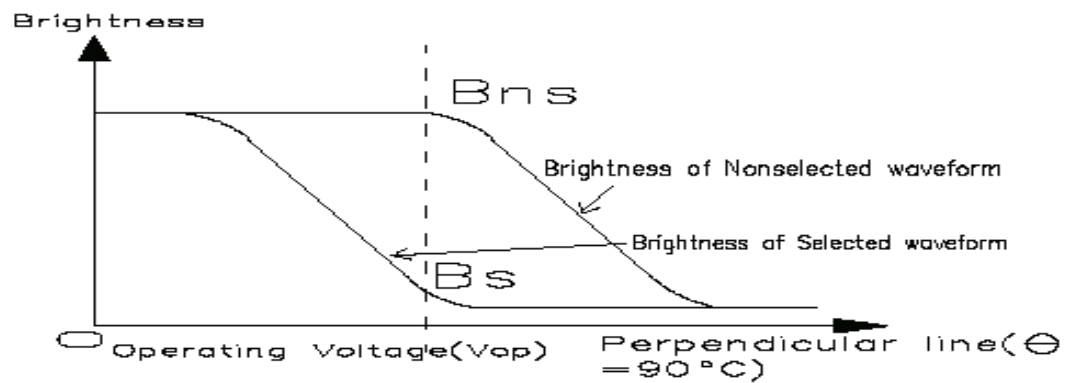




Note(2) Response Time:

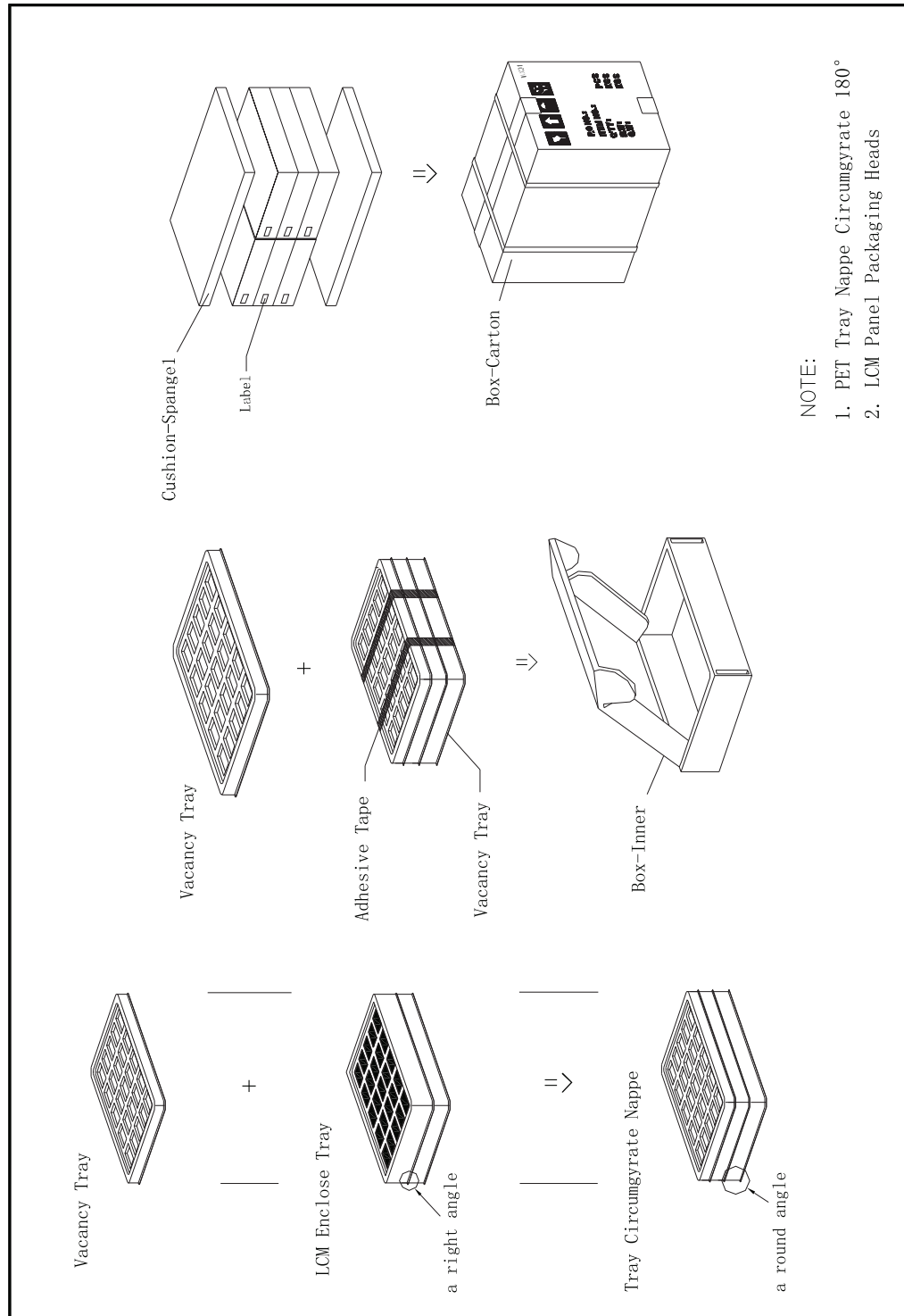


Note(3) Contrast Ratio Definition:



$$\text{Contrast Ratio (Cr)} = \frac{\text{Luminance with all pixel white}}{\text{Luminance with all pixel black}}$$

## 10.PACKAGE.



## **11. STANDARD SPECIFICATION FOR RELIABILITY:**

Item	Condition	Time (hrs)	Assessment
High temp. Storage	80°C	120	No abnormalities in functions and appearance
High temp. Operating	70°C	120	
Low temp. Storage	-30°C	120	
Low temp. Operating	-20°C	120	
Humidity	40°C/ 90%RH	120	
Thermal Shock Temp. Cycle	-20°C ← 25°C → 70°C (0.5 hour ← 5 min → 0.5 hour)	10cycles	

Functions, performance, appearance, etc. shall be free from remarkable deterioration within 50,000 hours under ordinary operating and storage conditions room temperature (25±10°C), normal humidity (45±20% RH), and in area not exposed to direct sun light. (Life time of backlight, please refer to Data about backlight.)

### **Testing Conditions and Inspection Criteria:**

For the final test the testing sample must be stored at room temperature for 24 hours, after the tests listed in up Table, Standard specifications for Reliability have been executed in order to ensure stability.

Item	Test Model	In section Criteria
Current Consumption	Refer To Specification	The current consumption should conform to the product specification.
Contrast	Refer To Specification	After the tests have been executed, the contrast must be larger than half of its initial value prior to the tests.
Appearance	Visual inspection	Defect free.

## **12.SPECIFICATION OF QUALITY ASSURANCE:**

### **12.1 Purpose**

This standard for Quality Assurance should affirm the quality of LCD Module products to supply to purchaser by Orient Display.

### **12.2 Standard for Quality Test**

#### **a. Inspection:**

Before delivering, the supplier should take the following tests, and affirm the quality of product.

#### **b. Electro-Optical Characteristics:**

According to the individual specification to test the product.

#### **c. Test of Appearance Characteristics:**

According to the individual specification to test the product.

#### **d. Test of Reliability Characteristics:**

According to the definition of reliability on the specification for testing products.

#### **e. Delivery Test:**

Before delivering, the supplier should take the delivery test.

(i) Test method: According to MIL-STD105E.General Inspection Level\_ take a single time.

(ii) The defects classify of AQL as following:

Major defect: AQL = 0.65

Minor defect: AQL = 2.5

Total defects: AQL = 2.5

### **12.3 Nonconforming Analysis & Deal With Manners**

#### **a. Nonconforming Analysis:**

(i) Purchaser should supply the detail data of non- conforming sample and the nonconforming.

(ii) After accepting the detail data from purchaser, the analysis of nonconforming should be finished in two weeks.

(iii) If supplier cannot finish analysis on time, must announce purchaser before two weeks.

#### **b. Disposition of nonconforming:**

(i) If find any product defect of supplier during assembly time, supplier must change the good product for every defect after recognition.

(ii) Both supplier and customer should analyze the reason and discuss the disposition of nonconforming when the reason of nonconforming is not sure.

### **12.4 Agreement items**

Both sides should discuss together when the following problems happen.

a. There is any problem of standard of quality assurance, and both sides think that it must be modified.

b. There is any argument item which does not record in the standard of quality assurance.

c. Any other special problem.

## 12-5 Standard of The Product Appearance Test

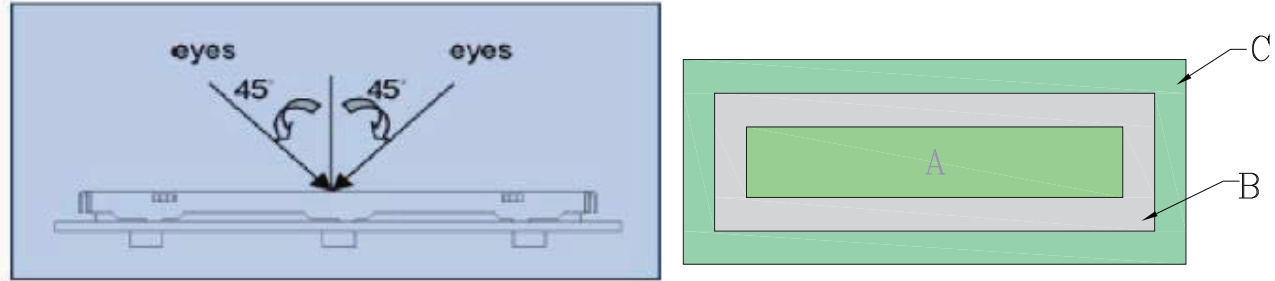
a. Manner of appearance test: This specification should be applied for both light on and off situation.

(i) The test must be under 20W × 2 or 40W fluorescent light, and the distance of view must be at 30±5cm.

(ii) When test the model of transmissive product must add the reflective plate.

(iii) The test direction is base on about around 10° of vertical line (Left graph)

(iii) Temperature: 25±5°C Humidity: 65±10%RH



(iv) Definition of area (Right graph)

A. Area: Viewing area. B. Area: Out of viewing area.(Outside viewing area)

b. Basic principle:

(i) It will accord to the AQL when the standard can not be described.

(ii) The sample of the lowest acceptable quality level must be discussed by both supplier and customer when any dispute happened.

(iii) Must add new item on time when it is necessary.

c. Standard of inspection: (Unit: mm)

Allowable limits defined in follow Dot defect Table should be met for each white, black , R, G, B raster. The limits apply to the entire area. Missing white in 60% or more of typical (one color, R or G or B) pixel aperture is defined as a bright defect, less than 60% is acceptable .Black spot in 60% or more of typical pixel aperture is defined as a dark defect, less than 60% is acceptable.

Dot defect table:

Item		White dot defect	Black dot defect	Total
1	Defect counts	3	3	3
2	Combined defect Counts	No combined dot defect allowed. Two Single dot defect that within 5mm during each dot defect should becouned as combined dot defect.		

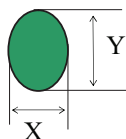
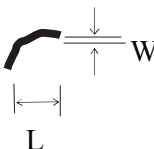
## 12-6 Inspection specification

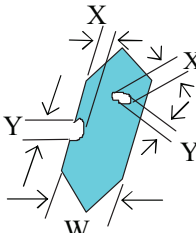
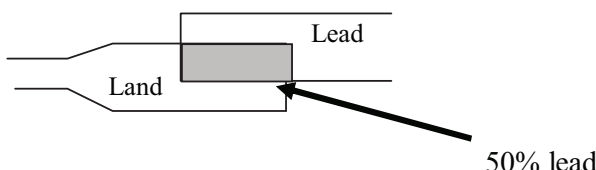
AQL inspection standard

Sampling method: MIL-STD-105E, Level II, single sampling

Classify	Item		Note	AQL
Major	Display state	Short or open circuit	1	0.65
		Contrast defect (dim, ghost)		
		LC leakage		
		Flickering		
		No display		
		Wrong viewing direction	2	
		Wrong Back-light	7	
	Non-display	Flat cable or pin reverse	9	
		Wrong or missing component	10	
Minor	Display state	Background color deviation	2	2.5
		Black spot and dust	3	
		Line defect	4	
		Scratch		
		Rainbow	5	
		Pin hole	6	
	Polarizer	Bubble and foreign material	3	
		Scratch	4	
	PCB,FPC	Scratch	4	
	Soldering	Poor connection	8	
	Wire	Poor connection	9	
	LCD	CHIP OUT	11	

**Note on defect classification:**

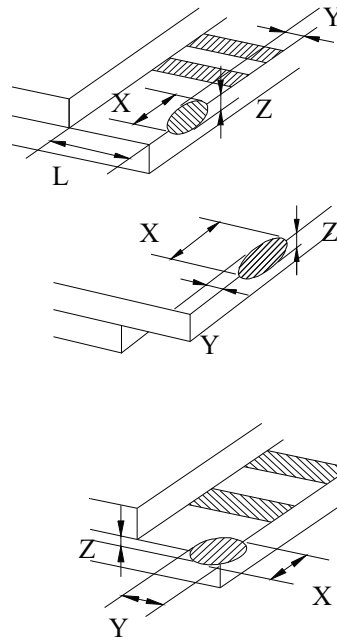
No.	Item	Criterion																				
1	Short or open circuit	Not allow																				
	LC leakage																					
	Flickering																					
	No display																					
	Wrong viewing direction																					
	Wrong Back-light																					
2	Contrast defect	Refer to approval sample																				
	Background color deviation																					
3	Point defect, Black spot, dust (incl. Polarizer) ex.: dirt under polarizer, Pinhole of reflector ,glass scratch, dirt under glass,scratch on polarizer $\phi = (X+Y)/2$	<div></div> <table><tr><td>Point</td><td>Acceptable Qty.</td></tr><tr><td>Size</td><td></td></tr><tr><td><math>\phi \leq 0.10</math></td><td>Disregard</td></tr><tr><td><math>0.10 &lt; \phi \leq 0.20</math></td><td>3</td></tr><tr><td><math>0.20 &lt; \phi \leq 0.25</math></td><td>2</td></tr><tr><td><math>0.25 &lt; \phi \leq 0.30</math></td><td>1</td></tr><tr><td><math>\phi &gt; 0.30</math></td><td>0</td></tr></table> <div>Unit: mm</div>	Point	Acceptable Qty.	Size		$\phi \leq 0.10$	Disregard	$0.10 < \phi \leq 0.20$	3	$0.20 < \phi \leq 0.25$	2	$0.25 < \phi \leq 0.30$	1	$\phi > 0.30$	0						
	Point	Acceptable Qty.																				
Size																						
$\phi \leq 0.10$	Disregard																					
$0.10 < \phi \leq 0.20$	3																					
$0.20 < \phi \leq 0.25$	2																					
$0.25 < \phi \leq 0.30$	1																					
$\phi > 0.30$	0																					
4	Line defect	<div></div> <table><tr><td></td><td>Line</td><td>Acceptable Qty.</td></tr><tr><td>L</td><td>W</td><td></td></tr><tr><td>---</td><td><math>0.015 \geq W</math></td><td>Disregard</td></tr><tr><td><math>3.0 \geq L</math></td><td><math>0.03 \geq W</math></td><td rowspan="2">2</td></tr><tr><td><math>2.0 \geq L</math></td><td><math>0.05 \geq W</math></td></tr><tr><td><math>1.0 \geq L</math></td><td><math>0.1 &gt; W</math></td><td>1</td></tr><tr><td>---</td><td><math>0.05 &lt; W</math></td><td>Applied as point defect</td></tr></table> <div>Unit: mm</div>		Line	Acceptable Qty.	L	W		---	$0.015 \geq W$	Disregard	$3.0 \geq L$	$0.03 \geq W$	2	$2.0 \geq L$	$0.05 \geq W$	$1.0 \geq L$	$0.1 > W$	1	---	$0.05 < W$	Applied as point defect
	Line	Acceptable Qty.																				
L	W																					
---	$0.015 \geq W$	Disregard																				
$3.0 \geq L$	$0.03 \geq W$	2																				
$2.0 \geq L$	$0.05 \geq W$																					
$1.0 \geq L$	$0.1 > W$	1																				
---	$0.05 < W$	Applied as point defect																				
5	Rainbow	Not more than two color changes across the viewing area																				

No.	Item	Criterion								
6	<p><b>Segment pattern</b></p> <p><b>W = Segment width</b></p> <p><b><math>\phi = (X+Y)/2</math></b></p>	<p><b>(1) Pin hole</b></p> <p><math>\phi &lt; 0.15\text{mm}</math> is acceptable.</p> <div></div> <table><tr><th>Point Size</th><th>Acceptable Qty</th></tr><tr><td><math>\phi \leq 1/4W</math></td><td>Disregard</td></tr><tr><td><math>1/4W &lt; \phi \leq 1/2W</math></td><td>1</td></tr><tr><td><math>\phi &gt; 1/2W</math></td><td>0</td></tr></table> <p>Unit: mm</p>	Point Size	Acceptable Qty	$\phi \leq 1/4W$	Disregard	$1/4W < \phi \leq 1/2W$	1	$\phi > 1/2W$	0
Point Size	Acceptable Qty									
$\phi \leq 1/4W$	Disregard									
$1/4W < \phi \leq 1/2W$	1									
$\phi > 1/2W$	0									
7	<b>Back-light</b>	<p>(1) The color of backlight should correspond its specification.</p> <p>(2) Not allow flickering</p>								
8	<b>Soldering</b>	<p>(1) Not allow heavy dirty and solder ball on PCB or FPC. (The size of dirty refer to point and dust defect)</p> <p>(2) Over 50% of lead should be soldered on Land.</p> <div></div>								
9	<b>Wire</b>	<p>(1) Copper wire should not be rusted</p> <p>(2) Not allow crack on copper wire connection.</p> <p>(3) Not allow reversing the position of the flat cable.</p> <p>(4) Not allow exposed copper wire inside the flat cable.</p>								
10	<b>PCB,FPC</b>	<p>(1) Not allow screw rust or damage.</p> <p>(2) Not allow missing or wrong putting of component.</p>								



11	LCD	<p data-bbox="873 226 1188 262"><b>2.1.1 chip on the surface</b></p> <div data-bbox="938 300 1230 451"> </div> <div data-bbox="857 520 1156 709"> </div> <div data-bbox="876 804 1258 993"> </div> <div data-bbox="914 1119 1274 1291"> </div> <p data-bbox="901 1350 1161 1386">Note: A:LCD Length</p> <table data-bbox="764 1444 1304 1722"> <tr> <th>X</th><th></th><th>Z</th></tr> <tr> <td><math>&gt;1/8A</math></td><td><math>\leq 0.3\text{mm}</math></td><td><math>\leq 1/2T</math></td></tr> <tr> <td rowspan="2"><math>\leq 1/8A</math></td><td>Not enter into epoxy frame</td><td><math>\leq T</math></td></tr> <tr> <td>Not enter into the inner edge of epoxy</td><td><math>\leq 1/2T</math></td></tr> </table>	X		Z	$>1/8A$	$\leq 0.3\text{mm}$	$\leq 1/2T$	$\leq 1/8A$	Not enter into epoxy frame	$\leq T$	Not enter into the inner edge of epoxy	$\leq 1/2T$
X		Z											
$>1/8A$	$\leq 0.3\text{mm}$	$\leq 1/2T$											
$\leq 1/8A$	Not enter into epoxy frame	$\leq T$											
	Not enter into the inner edge of epoxy	$\leq 1/2T$											

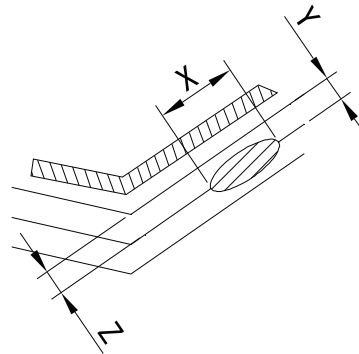
11

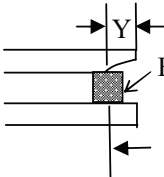
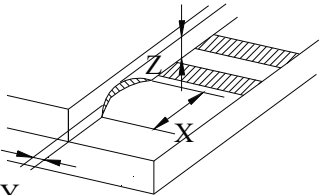
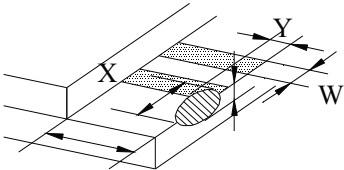
**LCD****2.1.2 chip on the terminal**

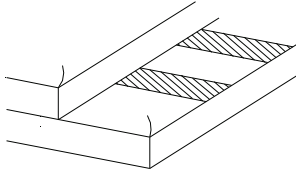
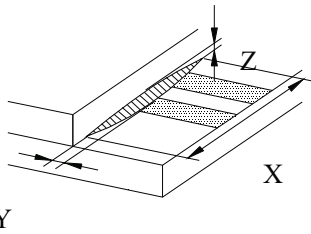
X	Y	Z
$>1/8A$	$\leq 0.3\text{mm}$	$\leq 1/2T$
$\leq 1/8A$	$\leq 1/2L$	$\leq T$
$\leq 1/8A \& \leq 1\text{mm}$	$\leq L$	$\leq T$
$\leq 1/8A \& \leq 2\text{mm}$	$\leq L$	$\leq 1/2T$

Note: A: LCD Length.

the distance between crack and contact pad must be greater than the width of 1<sup>st</sup> contact pad.

**2.1.3 chip out on between side**

11	LCD	<div data-bbox="792 289 1206 695">  <p>Epoxy frame</p>  <p>Y</p> </div> <div data-bbox="784 768 1287 972"> <table border="1"> <thead> <tr> <th>X</th><th>Y</th><th>Z</th></tr> </thead> <tbody> <tr> <td><math>\leq 1/8A</math></td><td>Not enter into epoxy frame</td><td><math>Z \leq 2T</math></td></tr> <tr> <td></td><td>Not enter into 1/2 epoxy frame</td><td><math>Z \leq 1/2T</math></td></tr> </tbody> </table> </div> <div data-bbox="889 978 1159 1012"> <p>Note: A : LCD Length</p> </div> <div data-bbox="613 1045 1104 1079"> <p>2.1.4 including corner chip and side chip</p> </div> <div data-bbox="813 1125 1154 1335">  <p>L</p> </div> <div data-bbox="914 1379 1169 1413"> <p>Note: A:LCD Length</p> </div> <div data-bbox="821 1438 1193 1610"> <table border="1"> <thead> <tr> <th>X</th><th>Y</th><th>Z</th></tr> </thead> <tbody> <tr> <td><math>&gt;1/8A</math></td><td><math>\leq 1/6L</math></td><td rowspan="3"><math>\leq 1/2T</math></td></tr> <tr> <td><math>\leq 1/8A</math></td><td><math>\leq 1/3L</math></td></tr> <tr> <td><math>\leq 1/4W</math></td><td><math>\leq 2/3L</math></td></tr> </tbody> </table> </div>	X	Y	Z	$\leq 1/8A$	Not enter into epoxy frame	$Z \leq 2T$		Not enter into 1/2 epoxy frame	$Z \leq 1/2T$	X	Y	Z	$>1/8A$	$\leq 1/6L$	$\leq 1/2T$	$\leq 1/8A$	$\leq 1/3L$	$\leq 1/4W$	$\leq 2/3L$
X	Y	Z																			
$\leq 1/8A$	Not enter into epoxy frame	$Z \leq 2T$																			
	Not enter into 1/2 epoxy frame	$Z \leq 1/2T$																			
X	Y	Z																			
$>1/8A$	$\leq 1/6L$	$\leq 1/2T$																			
$\leq 1/8A$	$\leq 1/3L$																				
$\leq 1/4W$	$\leq 2/3L$																				

11	LCD	<p><b>2.2 Chip out</b></p>  <p>1) Chip out is that crackles extend to inner edge. 2) Crackles round epoxy frame will be rejected. 3) Chip out on the terminal will be rejected: <math>Z=T</math> length <math>&gt;1\text{mm}</math> or <math>Z&lt;T</math> length <math>&gt;2\text{mm}</math> 4) The chip out at ITO will be rejected.</p>							
		<p><b>2.3 Poor cutting</b></p>  <table border="1"><thead><tr><th>X</th><th>Y</th><th>Z</th></tr></thead><tbody><tr><td><math>&gt;1/8</math> A</td><td><math>\leq 0.3</math></td><td><math>\leq 1/2T</math></td></tr><tr><td><math>\leq 1/8</math> A</td><td>According to drawing</td><td><math>1/2T \leq Z \leq T</math></td></tr></tbody></table> <p><b>Note :</b> A: LCD Length.</p>	X	Y	Z	$>1/8$ A	$\leq 0.3$	$\leq 1/2T$	$\leq 1/8$ A
X	Y	Z							
$>1/8$ A	$\leq 0.3$	$\leq 1/2T$							
$\leq 1/8$ A	According to drawing	$1/2T \leq Z \leq T$							
12	SMT	According to the <Acceptable of electronic assemblies> IPC-A-610C class 2 stander. Component missing or function defect are Major defect ,the others are Minor defect.							
Any one out of the specification will be rejected.									

## **13. GENERAL PRECAUTIONS**

### **(1) Mounting Method**

The panel of the LCD Module consists of two thin glass plates with polarizers which easily get damaged since the Module is fixed by utilizing fitting holes in the printed circuit board. Extreme care should be taken when handling the LCD Modules.

### **(2) Caution of LCD handling & cleaning**

When cleaning the display surface, use soft cloth with solvent (recommended below) and wipe lightly.

- Isopropyl alcohol
- Ethyl alcohol
- Trichlorotrifluoroethane

Do not wipe the display surface with dry or hard materials that will damage the polarizer surface. Do not use the following solvent:

- Water
- Ketone
- Aromatics

### **(3) Caution against static charge**

The LCD Module use C-MOS LSI drivers, so we recommend that you connect any unused input terminal to VDD or VSS, do not input any signals before power is turned on. And ground your body, Work/assembly table. And assembly equipment to protect against static electricity.

### **(4) Packaging**

Modules use LCD elements, and must be treated as such. Avoid intense shock and falls from a height.

- To prevent modules from degradation. Do not operate or store them exposed directly to sunshine or high temperature/humidity.

### **(5) Caution for operation**

- It is indispensable to drive LCD's within the specified voltage limit since the higher voltage than the limit shorten LCD life. An electrochemical reaction due to direct current causes LCD deterioration, Avoid the use of direct current drive.
- Response time will be extremely delayed at lower temperature than the operating temperature range and on the other hand at higher temperature LCD's show dark color in them.

However those phenomena do not mean malfunction or out of order with LCD's which will come back in the specified operating temperature range.

- If the display area is pushed hard during operation, some font will be abnormally displayed but it resumes normal condition after turning off once.

- As light dew depositing on terminals is a cause for electro-chemical reaction resulting in terminal open circuit.

Usage under the relative condition of 40°C, 50%RH or less is required.

#### (6) Storage

In the case of storing for a long period of time (for instance, for years) for the purpose or replacement use, The following ways are recommended.

- Storage in a polyethylene bag with sealed so as not to enter fresh air outside in it, And with no desiccant.

- Placing in a dark place where neither exposure to direct sunlight nor light is.

Keeping temperature in the specified storage temperature range.

- Storing with no touch on polarizer surface by the anything else. (It is recommended to store them as they have been contained in the inner container at the time of delivery)

#### (7) Safety

- It is recommendable to crash damaged or unnecessary LCD into pieces and wash off liquid crystal by using solvents such as acetone and ethanol which should be burned up later.

- When any liquid crystal leaked out of a damaged glass cell comes in contact with your hands, please wash it off well with soap and water.

#### **Limited Warranty**

The LCM of Orient Display are not consumer products, but may be incorporated by Orient Display's customers into consumer products or components thereof, Orient Display does not warrant that its components are fit for any such particular purpose.

1. The liability of Orient Display is limited to repair or replacement on the terms set forth below. Orient Display will not be responsible for any subsequent or consequential events or injury or damage to any personnel or user including third party personnel and/or user. Unless otherwise agreed in writing between Orient Display and the customer, Orient Display will only replace or repair any of its LCM which is found defective electrically or visually when inspected in accordance with Orient Display.
2. No warranty can be granted if any of the precautions state in handling liquid crystal display above has been disregarded. Broken glass, scratches on polarizer mechanical damages as well as defects that are caused accelerated environment tests are excluded from warranty.
3. In returning the LCM, they must be properly packaged; there should be detailed description of the failures or defect.

**Orient Display reserves the right to change this specification.**

**- END -**