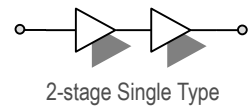


Features

- $S_{21} = 24.1 \text{ dB @ } 1525 \text{ MHz}$
 $= 23.9 \text{ dB @ } 1559 \text{ MHz}$
- NF of 0.53 dB over Frequency
- Unconditionally Stable
- Single 5V Supply
- High OIP3 @ Low Current

Description

The plerow™ ALN-series is the compactly designed surface-mount module for the use of the LNA with or without the following gain blocks in the infrastructure equipment of the mobile wireless (CDMA, GSM, PCS, PHS, WCDMA, DMB, WLAN, WiBro, WiMAX), GPS, satellite communication terminals, CATV and so on. It has an exceptional performance of low noise figure, high gain, high OIP3, and low bias current. The stability factor is always kept more than unity over the application band in order to ensure its unconditionally stable implementation to the application system environment. The surface-mount module package including the completed matching circuit and other components necessary just in case allows very simple and convenient implementation onto the system board in mass production level.



Specifications (in Production)

Typ. @ T = 25°C, $V_s = 5 \text{ V}$, Freq. = 1542 MHz, $Z_{o,sys} = 50 \text{ ohm}$

Parameter	Unit	Specifications		
		Min	Typ	Max
Frequency Range	MHz	1525		1559
Gain	dB	23	24	
Gain Flatness	dB		± 0.1	± 0.2
Noise Figure	dB		0.53	0.56
Output IP3 ⁽¹⁾	dBm	18	19	
S11 / S22 ⁽²⁾	dB			-17 / -17
Output P1dB	dBm	7	8	
Switching Time ⁽³⁾	μsec		-	
Supply Current	mA		35	45
Supply Voltage	V		5	
Impedance	Ω		50	
Max. RF Input Power	dBm	C.W 29 ~ 31 (before fail)		
Package Type & Size	mm	Surface Mount Type, 10Wx10Lx3.8H		

More Information

Website: www.asb.co.kr
 E-mail: sales@asb.co.kr

Tel: (82) 42-528-7223
 Fax: (82) 42-528-7222

ASB Inc., 4th Fl. Venture Town Bldg., 367-17 Goijeong-Dong, Seo-Gu, Daejeon 302-716, Korea

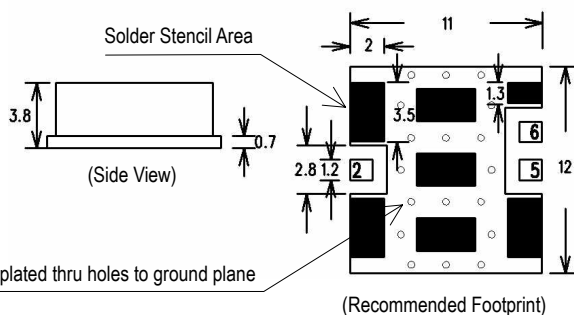
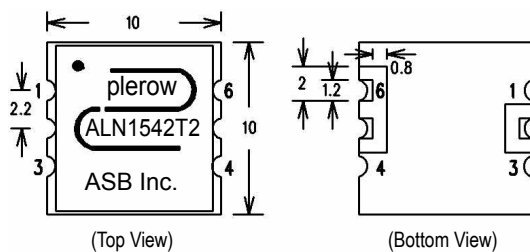
Operating temperature is -40°C to +85°C.

1) OIP3 is measured with two tones at an output power of -7 dBm / tone separated by 1 MHz.

2) S11/S22 (max) is the worst value within the frequency band.

3) Switching time means the time that takes for output power to get stabilized to its final level after switching DC voltage from 0 V to V_s .

Outline Drawing (Unit: mm)



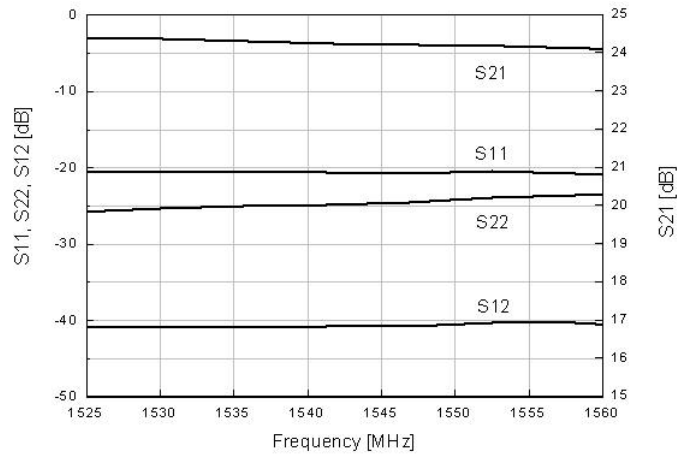
Pin Number	Function
2	RF In
5	RF Out
6	V_s
Others	Ground

- Note: 1. The number and size of ground via holes in a circuit board is critical for thermal RF grounding considerations.
 2. We recommend that the ground via holes be placed on the bottom of all ground pins for better RF and thermal performance, as shown in the drawing at the left side.

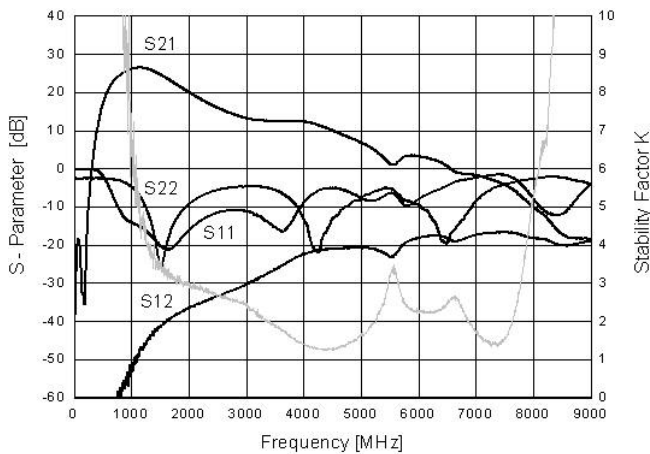
**Typical Performance
 (Measured)**

1525~1559
+5 V

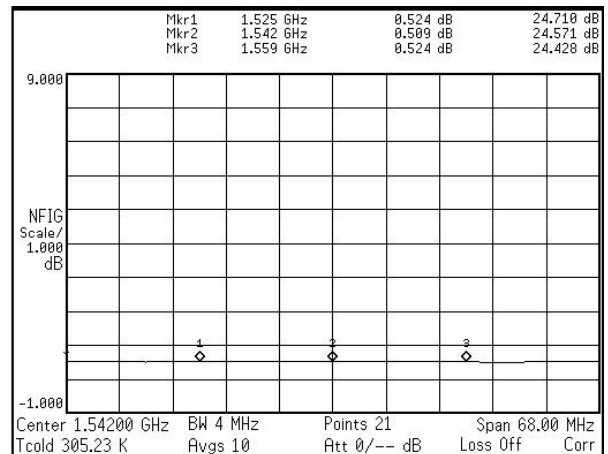
S-parameters



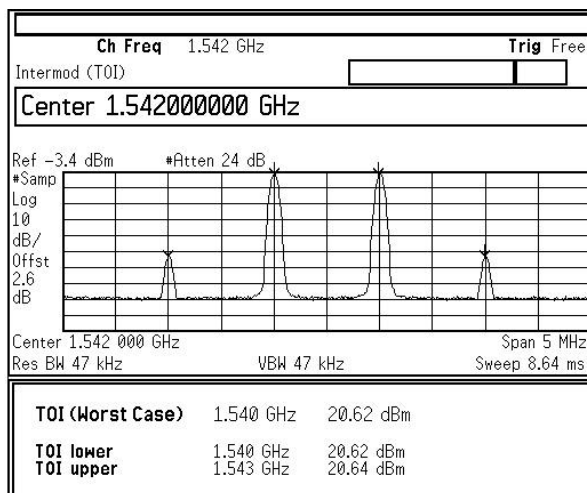
S-parameters & K Factor



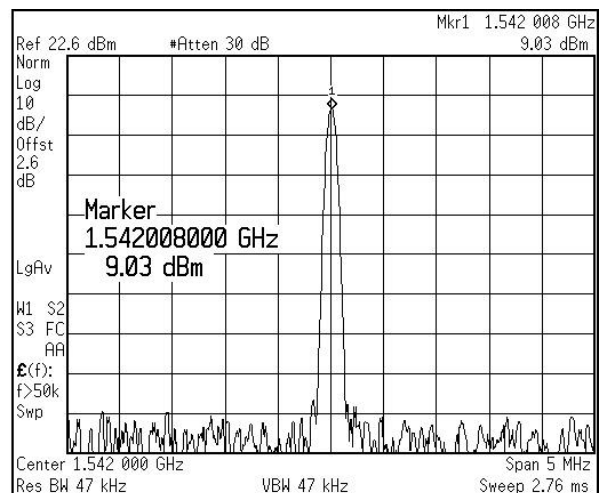
Noise Figure



OIP3



P1dB



RF Performance with Voltage Change

1. S-parameter

	1525 MHz			1542 MHz				1559 MHz		
	S21 (dB)	S11 (dB)	S22 (dB)	S21 (dB)	G/F (dB)	S11 (dB)	S22 (dB)	S21 (dB)	S11 (dB)	S22 (dB)
4.50 V	23.59	-20.74	-21.46	23.45	0.27	-20.95	-20.80	23.32	-21.14	-20.12
4.75 V	24.02	-20.89	-23.60	23.87	0.28	-21.15	-22.86	23.74	-21.34	-22.03
5.00 V	24.36	-20.03	-25.87	24.21	0.28	-20.24	-25.03	24.08	-20.45	-24.11
5.25 V	24.64	-20.00	-27.84	24.48	0.28	-20.23	-27.47	24.36	-20.37	-26.32
5.50 V	24.88	-20.04	-29.45	24.72	0.29	-20.30	-29.84	24.59	-20.41	-28.30

2. OIP3, P1dB & NF

	1525 MHz			1542 MHz			1559 MHz		
	OIP3 (dBm)	P1dB (dBm)	NF (dB)	OIP3 (dBm)	P1dB (dBm)	NF (dB)	OIP3 (dBm)	P1dB (dBm)	NF (dB)
4.50 V	17.52	6.42	0.566	17.51	6.41	0.568	17.42	6.63	0.572
4.75 V	19.30	7.72	0.544	19.33	7.93	0.546	19.21	8.00	0.545
5.00 V	20.92	8.98	0.522	20.45	9.10	0.525	20.89	9.14	0.524
5.25 V	22.36	10.10	0.535	22.41	10.20	0.529	22.21	10.24	0.532
5.50 V	23.56	11.10	0.525	23.68	11.20	0.526	23.47	11.22	0.529

Note: tested at room temperature.

RF Performance with Operating Temperature

1. S-parameter

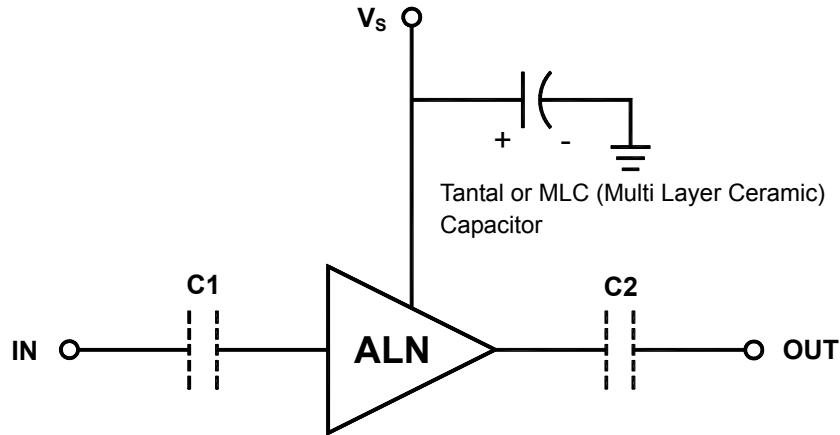
	1525 MHz			1542 MHz				1559 MHz		
	S21 (dB)	S11 (dB)	S22 (dB)	S21 (dB)	G/F (dB)	S11 (dB)	S22 (dB)	S21 (dB)	S11 (dB)	S22 (dB)
-45 °C	24.68	-19.60	-29.75	24.53	0.26	-19.55	-27.75	24.42	-19.63	-25.48
-10 °C	24.50	-19.53	-27.51	24.33	0.27	-19.81	-25.53	24.22	-19.90	-23.97
25 °C	24.30	-20.43	-25.43	24.13	0.30	-20.65	-25.21	24.00	-20.81	-20.53
60 °C	23.93	-20.61	-22.97	23.76	0.30	-21.07	-22.30	23.63	-21.13	-21.10
85 °C	23.89	-20.59	-21.70	23.70	0.29	-20.86	-21.02	23.60	-20.93	-20.19

2. OIP3, P1dB & NF

	1525 MHz			1542 MHz			1559 MHz		
	OIP3 (dBm)	P1dB (dBm)	NF (dB)	OIP3 (dBm)	P1dB (dBm)	NF (dB)	OIP3 (dBm)	P1dB (dBm)	NF (dB)
-45 °C	19.37	7.70	0.218	19.73	7.95	0.217	19.16	7.56	0.230
-10 °C	20.17	8.33	0.348	20.61	8.67	0.353	20.04	8.27	0.346
25 °C	20.81	9.08	0.516	20.81	9.09	0.509	20.67	8.90	0.524
60 °C	21.40	9.60	0.652	21.48	9.61	0.652	21.09	9.38	0.654
85 °C	21.72	9.83	0.745	22.01	10.04	0.747	21.49	9.65	0.744

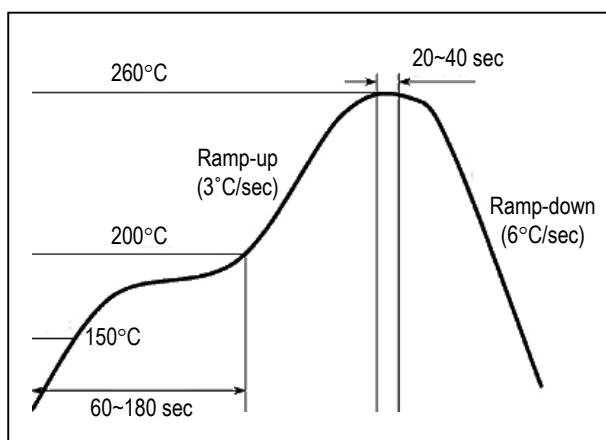
Note: tested at $V_s = 5V$.

Application Circuit

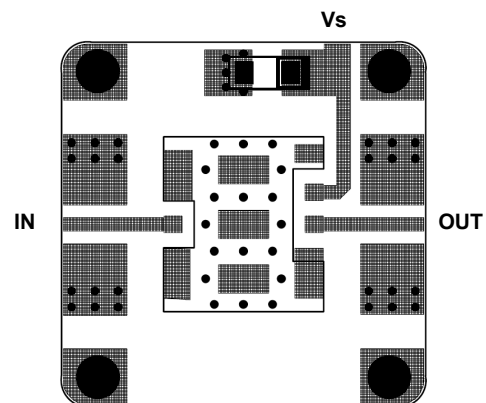


- 1) The tantalum or MLC (Multi Layer Ceramic) capacitor is optional and for bypassing the AC noise introduced from the DC supply. The capacitance value may be determined by customer's DC supply status. The capacitor should be placed as close as possible to V_s pin and be connected directly to the ground plane for the best electrical performance.
- 2) DC blocking capacitors are always necessarily placed at the input and output port for allowing only the RF signal to pass and blocking the DC component in the signal. The DC blocking capacitors are included inside the ALN module. Therefore, C1 & C2 capacitors may not be necessary, but can be added just in case that the customer wants. The value of C1 & C2 is determined by considering the application frequency.

Recommended Soldering Reflow Process



Evaluation Board Layout



Size 25x25mm
 (for ALN-AT, BT, T Series – 10x10mm)