



RF X-TREME™ Cross Polarized Triple Band Antenna, 698-2360MHz, 65deg, 13.6/16.3/17.2dBi, 4ft, VET, RET

The new RF X-TREME base station antenna design provides the highest gain and cross polar discrimination combined with the best vertical pattern control of any triple band antenna for its size. It is an ideal choice for site upgrades and new deployments where three frequency bands, or MIMO/4 RX diversity, is used to add capacity and increase coverage. Only 12 inches wide and 4 feet high, it maintains the size of a dual band antenna, while adding a third antenna path with no compromise in RF performance. It can be used for 2G, 3G and 4G technologies. This multi-band antenna features superior pattern symmetry and a phase shifter for each radiating dipole providing exceptional patterns at all tilt settings. It is supplied with an integrated and field replaceable AISG 2.0 antenna control unit (ACU) for remote electrical tilt (RET) compatibility.

FEATURES / BENEFITS

- Cross polarization — triple band version with 6 ports (2x 698-894 MHz and 4x 1695-2360 MHz)
- Pair shifting of dipoles minimized — reduces quantization lobe interference issues (Low Band has only top two dipoles shifted in pairs and High Band has no dipoles shifted in pairs)
- Superior X-Pol Discrimination — Improves Rx diversity
- High suppression of upper sidelobes — reduces cell interference
- Enhanced tilt range from 2-10 degrees for 698-894MHz and 0-10 degrees for 1695-2360MHz — ideal for applications in dense areas
- Variable electrical downtilt — provides enhanced precision in controlling intercell interference
- High reliability — designed to last in a tower top environment
- Design incorporates low windload and low weight — minimizes tower loading
- Quick and easy to install — reduces installation time and costs
- Includes two 0.5m AISG Jumpers



RF X-TREME FWW Series

Technical Features

ELECTRICAL SPECIFICATIONS

| Frequency Range | MHz | 698-806 | 806-894 | 1695-1880 | 1850-1990 | 1920-2180 | 2305-2360 |
|-------------------------------------|-----------|-----------------|-------------|-------------|-------------|-------------|-------------|
| Gain | dBi (dBd) | 13.1 (11.0) | 13.6 (11.5) | 15.9 (13.8) | 16.3 (14.2) | 16.6 (14.5) | 17.2 (15.1) |
| Horizontal Beamwidth | deg | 73 | 71 | 67 | 67 | 65 | 56 |
| Vertical Beamwidth | deg | 20.5 | 17.2 | 9.8 | 9.1 | 8.7 | 8.0 |
| Electrical Downtilt Range | deg | 2-10 | 2-10 | 0-10 | 0-10 | 0-10 | 0-10 |
| 1st Upper Sidelobe Suppression | dB | 18 | | | | | |
| Front-To-Back Ratio | dB | >24 | >32 | >27 | >26 | >26 | >29 |
| Polarization | | Dual pol +/-45° | | | | | |
| VSWR | | < 1.5:1 | | | | | |
| Isolation between Ports | dB | >30 typ. | | | | | |
| 3rd Order IMP @ 2 x 43 dBm | dBc | >153 | | | | | |
| Cross Polar Discrimination (XPD) 0° | dB | >10 | >10 | >10 | >9.0 | >8.7 | >7.5 |
| Impedance | Ohms | 50.0 | | | | | |
| Maximum Power Input | W | 500.0 | 500.0 | 300.0 | 300.0 | 300.0 | 300.0 |

MECHANICAL SPECIFICATIONS

| | | |
|-------------------------------|------------|------------------------------------|
| Lightning Protection | | Direct Ground |
| Connector Type/Location | | (6) 7-16 Long Neck Female/Bottom |
| Dimensions - HxWxD | mm (in) | 1220 x 300 x 200 (48 x 11.8 x 7.9) |
| Weight w/o Mtg Hardware | kg (lb) | 20 (44) |
| Survival/Rated Wind Speed | km/h (mph) | 240 (150) / 150 (93.2) |
| Applied Wind Load Standard | | DIN 1055-4 |
| Wind Load @ Rated Wind, Front | N (lbf) | 275 (62) 275 |
| Wind Load @ Rated Wind, Max. | N (lbf) | 340 (77) null |
| Wind Load @ Rated Wind, Side | N (lbf) | 340 (77) |
| Wind Load @ Rated Wind, Rear | N (lbf) | 312 (71) |

TESTING AND ENVIRONMENTAL

| | | |
|-----------------------|---------|------------------------|
| Operation temperature | °C (°F) | -40 to 60 (-40 to 140) |
|-----------------------|---------|------------------------|

MATERIAL

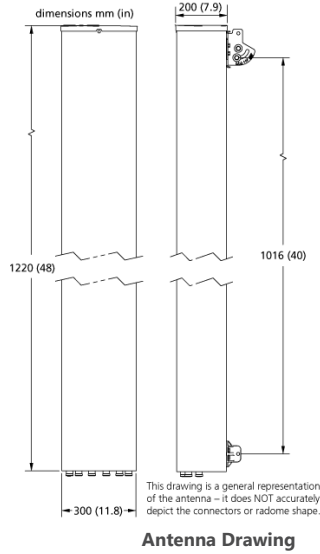
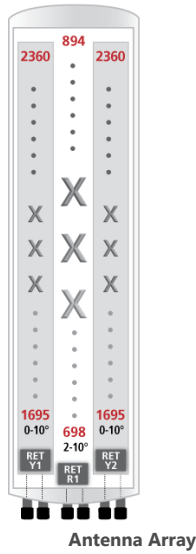


RF X-TREME™ Cross Polarized Triple Band Antenna, 698-2360MHz, 65deg, 13.6/16.3/17.2dBi, 4ft, VET, RET

| | | |
|-----------------------------------|--|---|
| Radome Material/Color | | ASA/Light Grey RAL7035 |
| Mounting Hardware Material | | Diecasted Aluminum and Galvanized Steel |

ORDERING INFORMATION

| | | |
|---------------------------------|---------|---------------------------------------|
| Shipping Weight | kg (lb) | 27 (59.5) |
| Packing Dimensions | mm (in) | 1410 x 384 x 379 (55.5 x 15.1 x 14.9) |
| Mounting Hardware | | APM40-2 |
| Mounting Pipe Diameter | mm (in) | 60 - 120 (2.36 - 4.72) |
| Mounting Hardware Weight | kg (lb) | 3.4 (7.5) |



| | |
|---|--|
| External Document Links | Notes |
| <p>APM40 Series Datasheet</p> <p>APM40 Series Installation Instructions</p> | <p>For additional mounting information please click "External Document Links" below.</p> |