

# ASM1352R Datasheet

---

USB3.1 to Dual SATA Bridge Controller

**Copyright Notice:**

Copyright © 2014, ASMedia TECHNOLOGY INC. All Rights Reserved.

INFORMATION IN THIS DOCUMENT IS PROVIDED IN CONNECTION WITH PRODUCTS OF ASMEDIA TECHNOLOGY INC. NO LICENSE, EXPRESS OR IMPLIED, BY ESTOPPEL OR OTHERWISE, TO ANY INTELLECTUAL PROPERTY RIGHTS IS GRANTED BY THIS DOCUMENT. EXCEPT AS PROVIDED IN ASMEDIA'S TERMS AND CONDITIONS OF SALE FOR SUCH PRODUCTS, ASMEDIA ASSUMES NO LIABILITY WHATSOEVER, AND ASMEDIA DISCLAIMS ANY EXPRESS OR IMPLIED WARRANTY, RELATING TO SALE AND/OR USE OF ASMEDIA PRODUCTS INCLUDING LIABILITY OR WARRANTIES RELATING TO FITNESS FOR A PARTICULAR PURPOSE, MERCHANTABILITY, OR INFRINGEMENT OF ANY PATENT, COPYRIGHT OR OTHER INTELLECTUAL PROPERTY RIGHT.

Products of ASMEDIA TECHNOLOGY INC. are not intended for use in medical, life saving, life sustaining, critical control or safety systems, or in nuclear facility applications.

ASMedia may make changes to specifications and product descriptions at any time, without notice.

ASMedia TECHNOLOGY INC. may have patents or pending patent applications, trademarks, copyrights, or other intellectual property rights that relate to the presented subject matter. The furnishing of documents and other materials and information does not provide any license, express or implied, by estoppel or otherwise, to any such patents, trademarks, copyrights, or other intellectual property rights.

Contact your local ASMedia sales office or your agent to obtain the latest specifications and before placing your product order.

Copies of documents which have an order number and are referenced in this document, or other ASMedia literature may be obtained by calling +886-2-22196088 or by visiting ASMedia's website at [www.asmedia.com.tw](http://www.asmedia.com.tw).

ASMedia and ASMedia logo are trademarks or registered trademarks of ASMedia TECHNOLOGY INC. in Taiwan and other countries.

© 2008 祥碩科技股份有限公司，著作權所有，並保留一切權利

本文資料為與祥碩科技股份有限公司之產品相關。本文並未明示或默示授權任何智慧財產權予第三人。除在祥碩科技股份有限公司對該產品提供的買賣條款及條件以外，祥碩科技股份有限公司免於擔負任何責任，且不對產品的買賣及使用做任何明示或默示的保證，包含產品適於特殊使用目的、以及產品不侵害任何專利權、著作權或其他智慧財產權。祥碩科技股份有限公司之產品不用於醫療的、救助生命的、生命維持的、安全控管系統或核子設施等用途之上。

祥碩科技股份有限公司可隨時不經通知，逕行增訂或修改產品規格及描述。

本文之相關專利權、申請中之專利權、商標權、著作權及其餘智慧財產權均屬祥碩科技股份有限公司所有。本文及其他資訊並未明示或默示的提供任何專利、商標、著作權及其餘智慧財產權之授權。

請於下產品訂單前聯絡當地的祥碩科技銷售處或代理商以取得最新的產品規格書。

本文提及之有訂單號碼之文件或其他詳細資料可參閱祥碩科技網站 [www.asmedia.com.tw](http://www.asmedia.com.tw) 或撥打 +886-2-22196088

ASMEDIA 和 ASMEDIA 商標均為祥碩科技股份有限公司在台灣和其他國家的註冊商標或商標。

**Office:**

ASMedia Technology, Inc.

6F, No.115, Minquan Rd., Xindian City, Taipei County 231, Taiwan, R.O.C.

<http://www.asmedia.com.tw>

Tel: 886-2-2219-6088

Fax: 886-2-2219-6080



**Environmentally hazardous materials are not used in this product.**

## Revision History

Rev.	Date	Description
0.1	June 13, 2014	Initial Release
0.2	September 29, 2014	Updated General Features Updated Serial SATA features Updated USB features Corrected typo "Mass Storage Class". Updated RAID mode switch by GUI control in Hydratek Updated Pin Description of RAID mode selection pins, GPIO2, and GPIO8 Updated ESD information Updated PCB design guide under thermal pad Updated power consumption
0.3	October 24, 2014	Updated power consumption Updated SATA port and clock interface pin description

ASMedia Confidential for FAE

## Table of Contents

Revision History .....	iii
Table of Contents .....	iv
List of Figures .....	v
1. General Description .....	1
2. Features .....	1
3. Package Type.....	2
4. Functional Diagram .....	3
5. Pinout Diagrams .....	4
6. Pin Descriptions .....	5
6.1 Strapping Table.....	6
7. Electrical Characteristics .....	7
7.1 Absolute Maximum Ratings .....	7
7.2 Recommended Operating Conditions .....	7
7.3 DC Electrical Characteristics for VBUS pins .....	7
7.4 DC Electrical Characteristics for GPIO pins .....	7
7.5 DC Electrical Characteristics for RST# pins.....	8
7.6 External Crystal Electrical Specification .....	8
7.7 Differential Clock Oscillator Electrical Specification.....	9
7.8 Internal Linear Regular Electrical Specification .....	9
7.9 Internal Switching Regular Electrical Specification .....	9
7.10 Power Consumption Characteristics .....	10
8. Power on Sequence.....	12
9. PCB Design Guide under Thermal Pad .....	13
10. Package Information .....	14
11. Top Marking Information.....	16

## List of Figures

Figure 1: Functional Diagram of ASM1352R.....	3
Figure 2: ASM1352R Pinout.....	4
Figure 3: Differential Crystal Design.....	8
Figure 4: Test point for power consumption.....	10
Figure 5: Test point for Type 2.....	11
Figure 6: Timing diagram.....	12
Figure 7: Symbol for via design rule under Thermal pad10. Package Information.....	13
Figure 8: Mechanical Specification – QFN 64.....	15

ASMedia Confidential for FAE

*This page is intentionally left blank.*

ASMedia Confidential for FAE

## 1. General Description

Engaged in high speed I/O solutions and storage application developments, ASMedia Technology is committed on enlarging product portfolio by introducing USB 3.1 to SATA 6Gbps RAID/Port Multiplier solution. ASM1352R is ASMedia's single chip solution to bridge the USB 3.1 to dual SATA interface. It is highly integrated with ASMedia SuperSpeedPlus, SuperSpeed, and High-Speed and SATA self-designed PHYs. ASM1352R supports one USB 3.1 ports and two SATA device ports, enabling USB PHY up to 10Gbps in compliance with USB 3.1 specifications and enabling Serial ATA PHYs up to 6Gbps high speed interface, following Serial ATA Revision 3.2 Specification.

ASM1352R integrates ASMedia's proprietary **HydraTek** technology, supporting RAID0 (Strip), RAID1 (Mirror), JBOD and Span (BIG) with low power and high efficiency RAID operation, easily configurable modes through GUI, completely free of resource loading on the system CPU. ASM1352R is useful for USB to SATA port expansion and performance boost, not only for internal design but also for external storage application.

## 2. Features

### General Features

- ◇ Integrated 8-bit micro-processor with embedded program RAM and ROM
- ◇ Support SPI NVRAM for Vendor Specific Application of USB Device Controller
- ◇ Support I2C interface with both of master mode and slave mode
- ◇ Support multiple GPIOs for LEDs and Storage Power Control
- ◇ Firmware downloadable by vendor specific commands via SATA host port
- ◇ FAN control support
- ◇ Drive plug-in detection capable
- ◇ Integrated Core power switching regulator
- ◇ Support 3.3V IO power supply and 1.2V Core power supply
- ◇ Support 25MHz with external crystal mode
- ◇ 8mmx8mm 64-pin QFN package
- ◇ Green Package with RoHs Compliance

### USB Features

- ◇ Support USB SuperSpeedPlus, USB SuperSpeed, High-Speed, and Full-Speed Operation.
- ◇ Support Mass Storage Class, Bulk-Only Transport Specification Revision 1.3
- ◇ Support Universal Attached SCSI Protocol Specification Revision 1.0
- ◇ Compliant with USB3.1 Specification Revision 1.0
- ◇ Compliant with USB Specification Revision 2.0

### Serial ATA Features

- ◇ Serial ATA bus up to 6Gbps Signal bandwidth
- ◇ Serial ATA PHY 1i/1m/1u/2i/2m/2u/3i/3u compliance
- ◇ Support SATA NCQ command
- ◇ Support over 2TB drives
- ◇ Staggered spin-up
- ◇ SATA Partial/Slumber support
- ◇ Power down capable for each storage drive
- ◇ SATA in-band commands support
- ◇ Pass through support for vendor specific commands
- ◇ Compliant with Serial ATA Specification Revision 3.2
- ◇ Support Spread Spectrum Control of USB3.0 and SATA interface to improve the EMI performance
- ◇ Support ATA/ATAPI Packet Command Set
- ◇ Support ATA/ATAPI LBA48 addressing mode

### Hydratek Features

- ◇ Support hardware RAID 0/1/JBOD/SPAN (BIG) mode
- ◇ RAID mode switch by hardware strapping
- ◇ Failed or degraded drives detection and report
- ◇ Automatic background rebuilding support

- ◇ Auto recovery from checkpoint location
- ◇ RAID error log
- ◇ SMART drive monitoring

### 3. Package Type

---

- ◇ Green Package 8x8 QFN 64L (Pb-free)

ASMedia Confidential for FAE



## 4. Functional Diagram

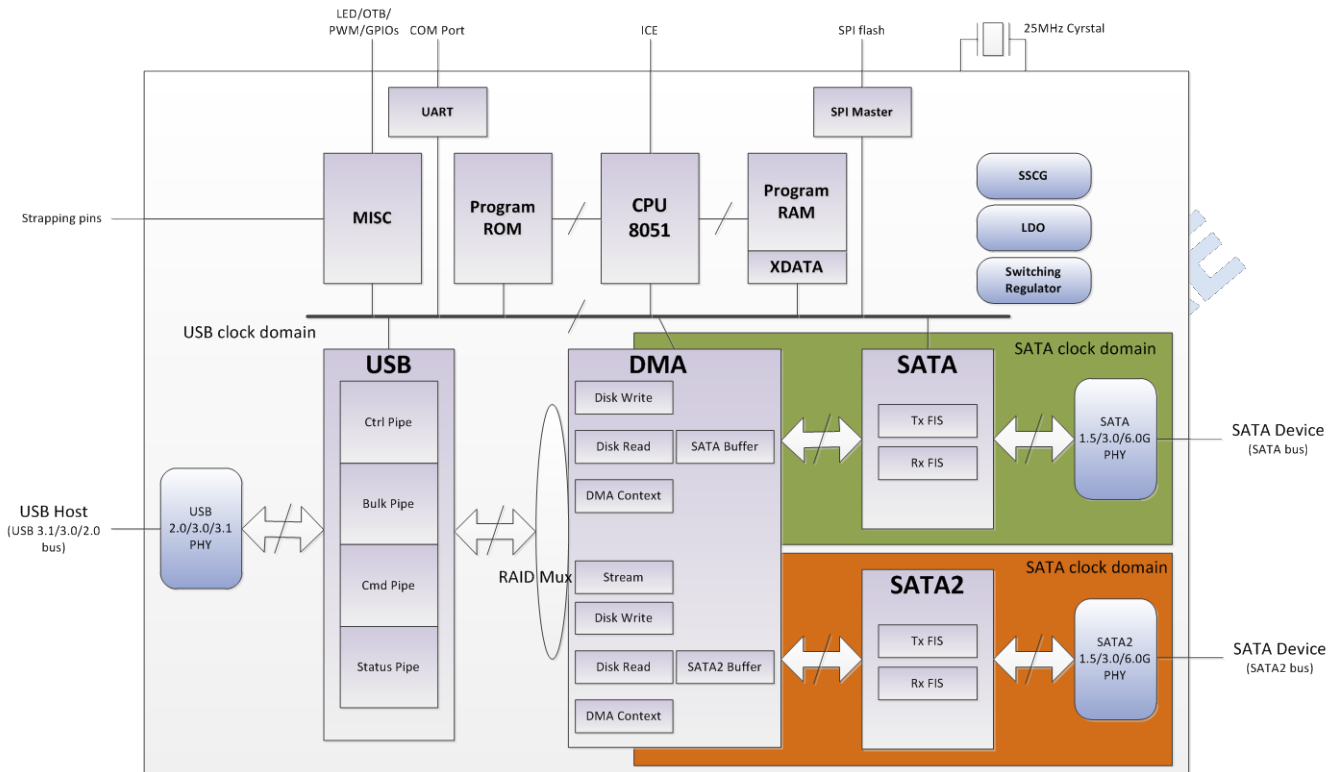


Figure 1: Functional Diagram of ASM1352R

## 5. Pinout Diagrams

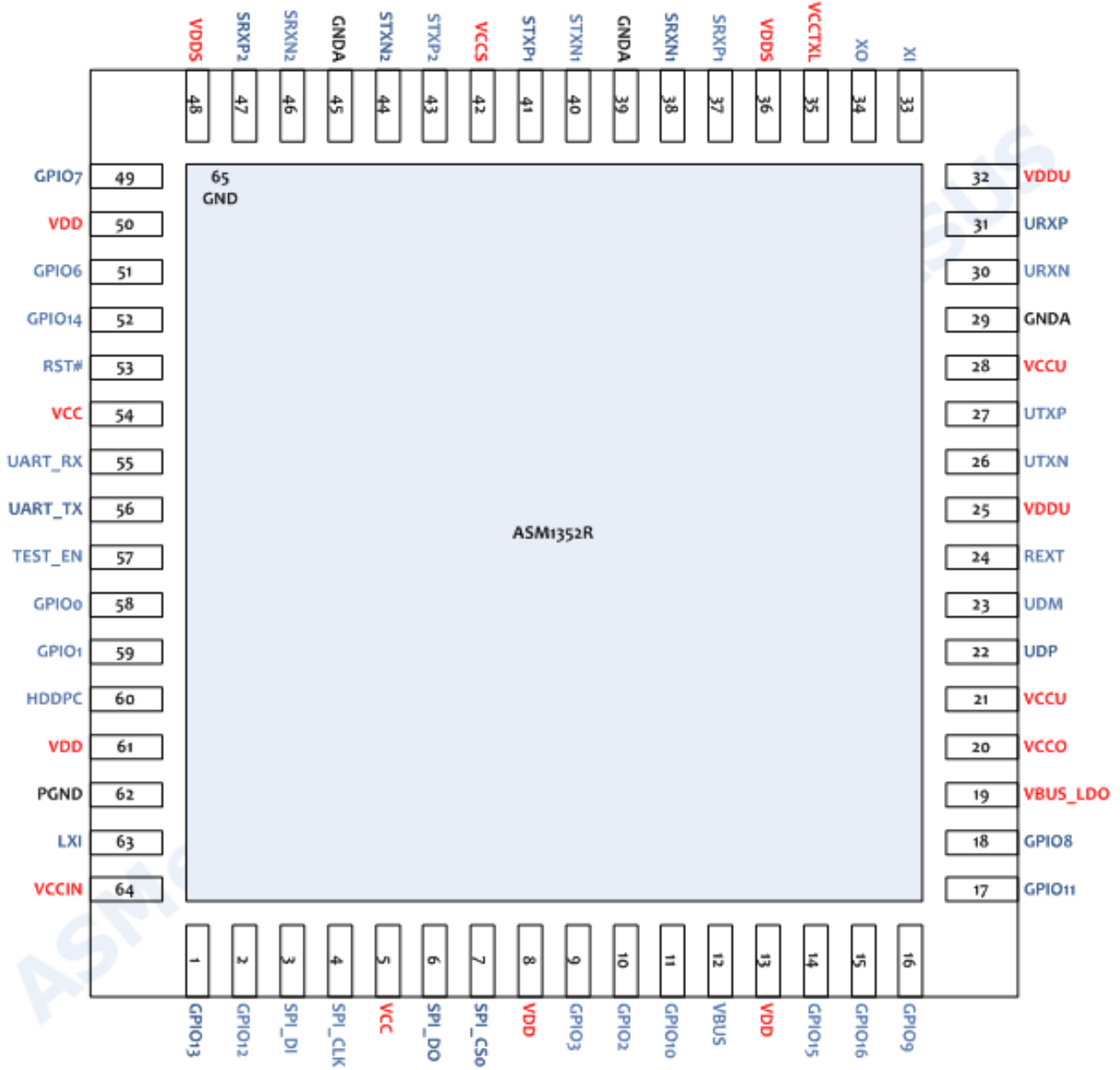


Figure 2: ASM1352R Pinout

## 6. Pin Descriptions

This section provides a detailed description of each signal. The following notations are used to describe the signal type.

I/O Type	Definition
I	Input pin
O	Output pin
B	Bi-directional pin
P	Power pin
G	Ground pin
OD	Open Drain

Pin No.	Name	TYPE	Descriptions
USB interface			
23	UDM	DB	USB2.0 negative Data Signal
22	UDP	DB	USB2.0 positive Data Signal
26	UTXN	DO	SuperSpeed USB negative Transmitter Signal
27	UTXP	DO	SuperSpeed USB positive Transmitter Signal
30	URXN	DI	SuperSpeed USB negative Receiver Signal
31	URXP	DI	SuperSpeed USB positive Receiver Signal
SATA interface			
37	SRXP1	DI	SATA positive Receiver Signal for SATA port0
38	SRXN1	DI	SATA negative Receiver Signal SATA port0
40	STXN1	DO	SATA negative Transmitter Signal SATA port0
41	STXP1	DO	SATA positive Transmitter Signal SATA port0
47	SRXP2	DI	SATA positive Receiver Signal for SATA port1
46	SRXN2	DI	SATA negative Receiver Signal SATA port1
44	STXN2	DO	SATA negative Transmitter Signal SATA port1
43	STXP2	DO	SATA positive Transmitter Signal SATA port1
System Signals			
57	TEST_EN	I	Test Enable Signal, with internal pull-down resistor 0: Normal Mode (Default) 1: Test Mode Enable
3	SPI_DI	B	Used as SPI_DI signal. Integrated pull-up resistor.
4	SPI_CLK	B	Used as SPI_CLK signal. Integrated pull-up resistor.
6	SPI_DO	B	General Purpose IO (GPIO5), used as SPI_DO, with internal pull-up resistor.
7	SPI_CS0	B	General Purpose IO (GPIO4), used as SPI_CS0, with internal pull-up resistor.
9	GPIO3	B	General Purpose IO, used as I2C_CLK. Integrated pull-up resistor.
10	GPIO2	B	General Purpose IO, used as SPI_CS1 or LEDP1, with internal pull-up resistor.
49	GPIO7	B	General Purpose IO, used as PWM 5V tolerance output pin for FAN control, configurable as GPIO via updated firmware. Integrated pull-up resistor.
51	GPIO6	B	General Purpose IO, used as I2C_DATA. Error LED for device port2. Integrated pull-up resistor.
2	GPIO12	B	General Purpose IO, used as Error LED for device port1. Integrated pull-up resistor.
55	UART_RX	B	URAT_RX while debug mode, used as General Purpose IO after power on. Integrated pull-up resistor.
56	UART_TX	B	UART_TX while debug mode, used as General Purpose IO after power on. Integrated pull-up resistor.
58	GPIO0	B	General Purpose IO, used as one touch button 2. Integrated pull-up resistor.
59	GPIO1	B	General Purpose IO, used as Active LED for device port2. Integrated pull-up resistor.

Pin No.	Name	TYPE	Descriptions
60	HDDPC	B	HDD power control pin, use as General Purpose IO. Integrated pull-up resistor. 0: Hard Drive Power Off 1: Hard Drive Power On
11	GPIO10	B	General Purpose IO, used as HDD power control pin 2, used as General Purpose IO. Integrated pull-up resistor. 0: Hard Drive Power Off 1: Hard Drive Power On
12	VBUS	I	USB Cable Power Detector
18	GPIO8	B	General Purpose IO, used as Tachometer input for FAN control or ALED1, with internal pull-up resistor.
1	GPIO13	B	General Purpose IO, used as Present detect or device sleep (DEVSLP) for device port1, with internal Pull up resistor
52	GPIO14	B	General Purpose IO, used as Present detect or device sleep (DEVSLP) for device port2, with internal Pull up resistor
14	GPIO15	B	General Purpose IO, used as RAID mode change. Integrated pull-up resistor.
15	GPIO16	B	General Purpose IO, used as RAID mode selection pin 0 (RM_SEL_0). Integrated pull-up resistor.
16	GPIO9	B	General Purpose IO, used as RAID mode selection pin 1 (RM_SEL_1). Integrated pull-up resistor.
17	GPIO11	B	General Purpose IO, used as RAID mode selection pin 2 (RM_SEL_2). Integrated pull-up resistor.
24	REXT	P	External Reference Resistor with 12.1Kohm +/-1%
53	RST#	I	Power Reset pin
Clock Interface			
33	XI	I	Crystal input or Clock input pin
34	XO	O	Crystal output or Clock output pin
35	VCCTXL	P	Power for Crystal and PLL circuit
Voltage Regulator			
19	VBUS_LDO	P	Linear regulator input
20	VCCO	P	Linear regulator output
64	VCCIN	P	Switching regulator input
63	LXI	P	Connect with external inductor
62	PGND	G	Ground for voltage regulator
Power and Ground			
21, 28	VCCU	P	USB high power pin
42	VCCS	P	SATA high power pin
25, 32	VDDU	P	USB low power pin
36, 48	VDDS	P	SATA low power pin
8, 13, 50, 61	VDD	P	Core power
5, 54	VCC	P	IO power
29, 39, 45	GND A	G	Analog Ground
65	GND	G	the exposed pad connected to common ground on PCB

## 6.1 Strapping Table

### Strapping for RAID Mode Select

RM_SELO	RM_SEL1	RM_SEL2	Function Description
1	X	X	Controlled by GUI
0	1	1	JBOD (Port Multiplier)
0	1	0	RAID 1
0	0	1	RAID 0
0	0	0	SPAN (BIG)

Notice: All GPIOs do not support 5V tolerance, except UART\_RX and FAN\_CTRL

## 7. Electrical Characteristics

### 7.1 Absolute Maximum Ratings

Stressing the below parameters listed over the absolute maximum rating may cause the device permanent damage. This is a stress rating only, and the function operating of the device at these or any other conditions over these parameters in the recommended operating condition is not implied. It is recommended to have a clamp circuit to protect the device with abnormal exhibit voltage spikes while power is switched on or off.

Parameter	Range	Unit
Power Supply for VCC	-0.5 ~ VCC+0.5	V
Power Supply for VDD	-0.5 ~ VDD+0.5	V
DC Input Voltage	-0.5 ~ VCC+0.5	V
Output Voltage	-0.5 ~ VCC+0.5	V
Storage Temperature	JEDEC J-STD-033B MSL 3	

### 7.2 Recommended Operating Conditions

Symbols	Parameter	Min.	Typ.	Max.	Units
V <sub>CC</sub>	IO Power Supply	3.0	3.3	3.6	V
V <sub>CCU</sub>	USB Analog High Power Supply	3.0	3.3	3.6	V
V <sub>CCS</sub>	SATA Analog High Power Supply	3.0	3.3	3.6	V
V <sub>DD</sub>	Core Power Supply		1.2		V
V <sub>DDU</sub>	USB Analog Low Power Supply		1.2		V
V <sub>DDS</sub>	SATA Analog Low Power Supply		1.2		V
T <sub>c</sub>	Operating Case Temperature	0	25	95	°C
T <sub>J</sub>	Operating Junction Temperature	0	25	120	°C
HBM	Human Body mode ESD	+/-2			KV
MM	Machine Mode ESD	+/-200			V

### 7.3 DC Electrical Characteristics for VBUS pins

Symbols	Parameter	Min.	Typ.	Max.	Units
V <sub>IH</sub>	Input High Level	2			V
V <sub>IL</sub>	Input Low Level			0.8	V
V <sub>HYS</sub>	Input Hysteresis	0.57	0.6	0.65	mV
V <sub>TH-L2H</sub>	VTH of Schmitt Trigger low to high	1.4		1.8	V
V <sub>TH-H2L</sub>	VTH of Schmitt Trigger high to low	0.85		1.10	V

### 7.4 DC Electrical Characteristics for GPIO pins

Symbols	Parameter	VCC=3.3V			Units
		Min.	Typ.	Max.	
V <sub>IH</sub>	Input High Level	2			V
V <sub>IL</sub>	Input Low Level			0.8	V
V <sub>HYS</sub>	Input Hysteresis	0.57	0.6	0.65	mV
V <sub>TH-L2H</sub>	VTH of Schmitt Trigger low to high	1.38	1.6	1.8	V
V <sub>TH-H2L</sub>	VTH of Schmitt Trigger high to low	0.89	1.07	1.22	V
R <sub>UP</sub>	Internal Pull-up resistance while Vin=0V	70	103	143	KΩ
	Internal Pull-up resistance while Vin=VCC/2 V	40	58.2	79.2	KΩ

Symbols	Parameter	VCC=3.3V			Units
		Min.	Typ.	Max.	
R <sub>DN</sub>	Internal Pull-down resistance while Vin=0V	68	109	158	KΩ
	Internal Pull-down resistance while Vin=VCC/2 V	39	61.7	88	KΩ
I <sub>IL-UP</sub>	Input pull-up current after Vin is read, Rup is off & Iil < 1uA when VIN=0	21	32	54	mA
	Input pull-up current after Vin is read, Rup is off & Iil < 1uA when VIN=VCC/2	19	28.4	48	mA
I <sub>IL-DN</sub>	Input pull-down current after Vin is read, Rdn is off & Iil < 1uA when VIN=VCC	19	30.2	54	mA
	Input pull-down current after Vin is read, Rdn is off & Iil < 1uA when VIN=VCC/2	17	26.8	48	mA

## 7.5 DC Electrical Characteristics for RST# pins

Symbols	Parameter	Min.	Typ.	Max.	Units
V <sub>IH</sub>	Input High Level	2.6			V
V <sub>IL</sub>	Input Low Level			1.4	V
V <sub>HYS</sub>	Input Hysteresis	0.218	0.235	0.25	V
V <sub>TH-L2H</sub>	VTH of Schmitt Trigger low to high	1.88		2.58	V
V <sub>TH-H2L</sub>	VTH of Schmitt Trigger high to low	1.65		2.35	V
I <sub>IL</sub>	Input pull-up leakage current while Vin=0V			1	uA

## 7.6 External Crystal Electrical Specification

Note: please refer to the figure 3

Symbol	Parameter	Min.	Typ	Max.	Unit
f <sub>XTAL</sub>	Frequency		25		MHz
Δf <sub>XTAL</sub>	Long Term Stability (at 25°C)	-30		30	ppm
T <sub>c</sub>	Temperature Stability	-30		30	ppm
F <sub>A</sub>	Aging	-5		5	ppm
C <sub>L</sub>	Load Capacitance (Single-end mode)		16		pF
C <sub>0</sub>	Shunt Capacitance	1	3	7	pF

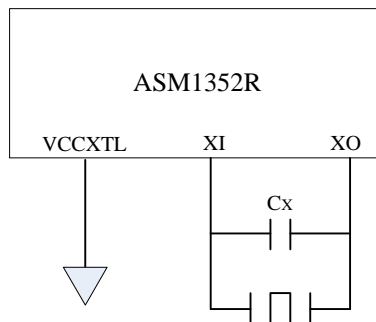


Figure 3: Differential Crystal Design

## 7.7 Differential Clock Oscillator Electrical Specification

Note: please refer to the figure 3

Symbol	Parameter	Min.	Typ	Max.	Unit
$f_{CLK}$	Frequency		25		MHz
$\Delta f_{CLK}$	Long Term Stability (all condition)	-150		150	ppm
$C_x$	External Load Capacitance (Differential mode)		10		pF
$C_{TOTAL}$	Total External Equivalent Capacitance from XI pin to XO pin (Differential mode)	9	11	15	Pf
$R_{TOTAL}$	Total External Equivalent Series Resistance from XI pin to XO pin			60	$\Omega$

## 7.8 Internal Linear Regular Electrical Specification

Symbol	Parameter	Min.	Typ	Max.	Unit
$V_{IN\_LINEAR}$	Input Voltage Range for internal linear regulator	4.5	5	5.5	V
$V_{OUT\_LINEAR}$	Output Voltage Range for internal linear regulator	3.15	3.3	3.45	V
$I_{MAX}$	Maximum capacity of current output			200	mA

Notice: Please make sure the VCCIN is tied to 5V, even it uses the external 5V to 3.3V regulator.

## 7.9 Internal Switching Regular Electrical Specification

Symbol	Parameter	Min.	Typ	Max.	Unit
$V_{IN\_SWITCH}$	Input Voltage Range for internal switching regulator	3.0		5.5	V
$V_{OUT\_SWITCH}$	Output Voltage Range for internal switching regulator		1.2		V
$\Delta V_N$ (p-p)	3.3V input voltage noise/ripple Range	-8		8	%
$F_{OSC}$	OSC frequency		1.7		MHz
$I_{MAX}$	Maximum capacity of current output			300	mA
$I_{P(LM)}$	P-channel current limiter		1		A

- **Strong recommendation to have 10uF decoupling capacitor placed close to pin64 to filter the noise/ripple of 3.3V switching regulator input.**

## 7.10 Power Consumption Characteristics

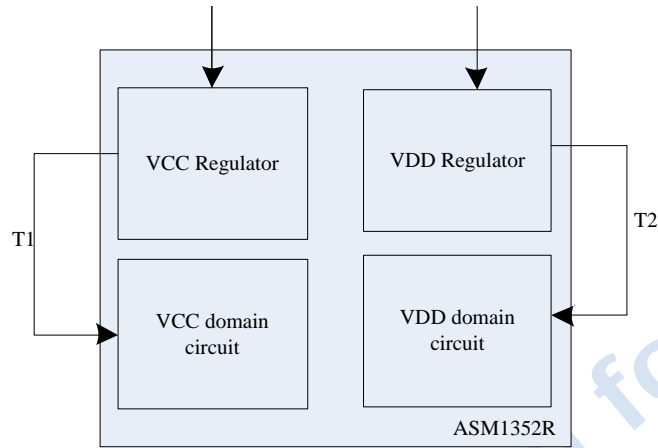


Figure 4: Test point for power consumption

Symbols	Parameter	Condition	USB3.1			USB3.0			USB2.0			Units
			Min.	Typ.	Max.	Min.	Typ.	Max.	Min.	Typ.	Max.	
<b>I<sub>vcc</sub></b>	Total current consumed for 3.3V power domain (Test point T1)	Operating	-	94.61	104		86.37	95		36.78	41	mA
		Idle	-	94.28	104		86.28	95		36.14	41	mA
		Suspend	-	0.72	0.98		0.72	0.98		0.72	0.98	mA
<b>I<sub>vdd</sub></b>	Total current consumed for 1.2V power domain (Test point T2)	Operating	-	487.53	537		399.84	440		279.83	308	mA
		Idle	-	343.82	378		320.12	353		273.62	301	mA
		Suspend	-	39.33	43.3		38.73	42.6		38.73	42.6	mA



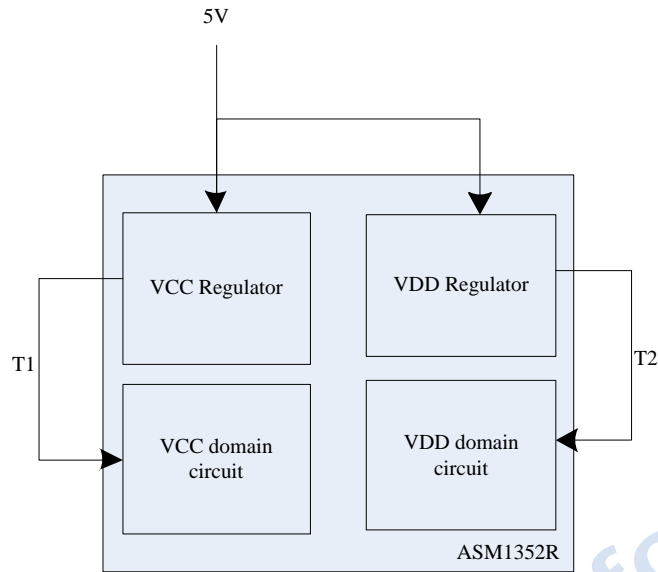


Figure 5: Test point for Type 2

Symbols	Parameter	Condition	USB3.1			USB3.0			USB2.0			Units
			Min.	Typ.	Max.	Min.	Typ.	Max.	Min.	Typ.	Max.	
<b>I<sub>VBUS</sub></b>	Total current consumption for 5V	Operating		255.48	282		217.19	239		122.35	135	mA
		Idle		203.07	224		187.23	206		120.53	133	mA
		Suspend		12.98	14.278		12.98	14.278		12.98	14.278	mA
<b>P<sub>VBUS</sub></b>	Total power consumption for 5V	Operating		1277.4	1405		1085.95	1195		611.75	673	mW
		Idle		1015.35	1117		936.15	1030		602.65	663	mW
		Suspend		64.9	72		64.9	72		64.9	72	mW

Notice: Different types of inductors used for internal switching regulator will have varying power consumption figures.

## 8. Power on Sequence

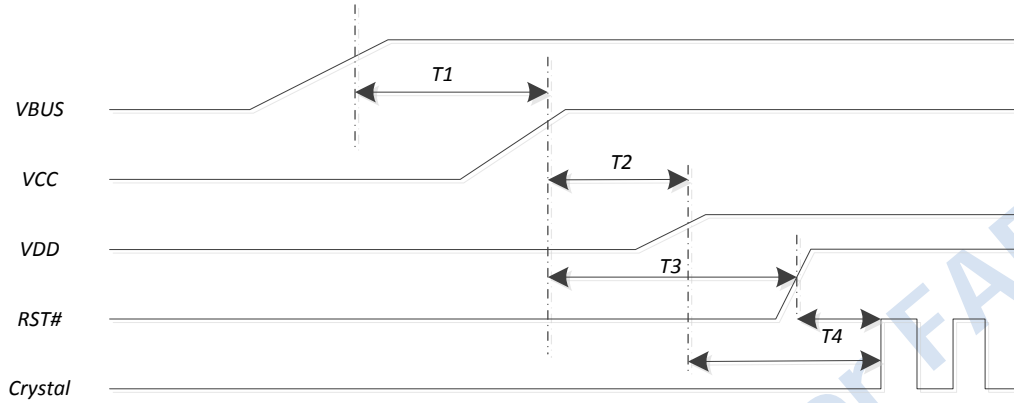


Figure 6: Timing diagram

Symbols	Parameter	Min	Typ	Max	Unit	Remark
<b>T1</b>	The delay of VCC after VBUS is available	0	5	10	ms	Measure from 10% of VCC to 90% of VBUS For Self-powered system or external 5V to VCC regulator, this rule is not needed.
<b>T2</b>	The delay of VDD after VCC is available	N/A		90	ms	Measure from 10% of VCC to 90% of VDD For external VCC to VDD regulator, this rule is not needed.
<b>T3</b>	The delay of RST# after VCC is available	0		N/A	ms	Measure from 90% of RST# to 90% of VCC
<b>T4</b>	The crystal clock is stable after RST# and VDD is available	15	25	40	ms	Measure from 90% of VDD or 2V of RST#
<b>T<sub>SLEW</sub></b>	Slew rate of VDD	0		10	ms	Measure from 10% to 90% of VDD

## 9. PCB Design Guide under Thermal Pad

To improve the thermal efficiency and signal integrity, it is recommended to place the thermal vias under or near to thermal pad. To avoid the process issue, please make sure the thermal via fills with solder covering with solder mask. It is recommended to follow up the pattern on PCB as Figure 8.

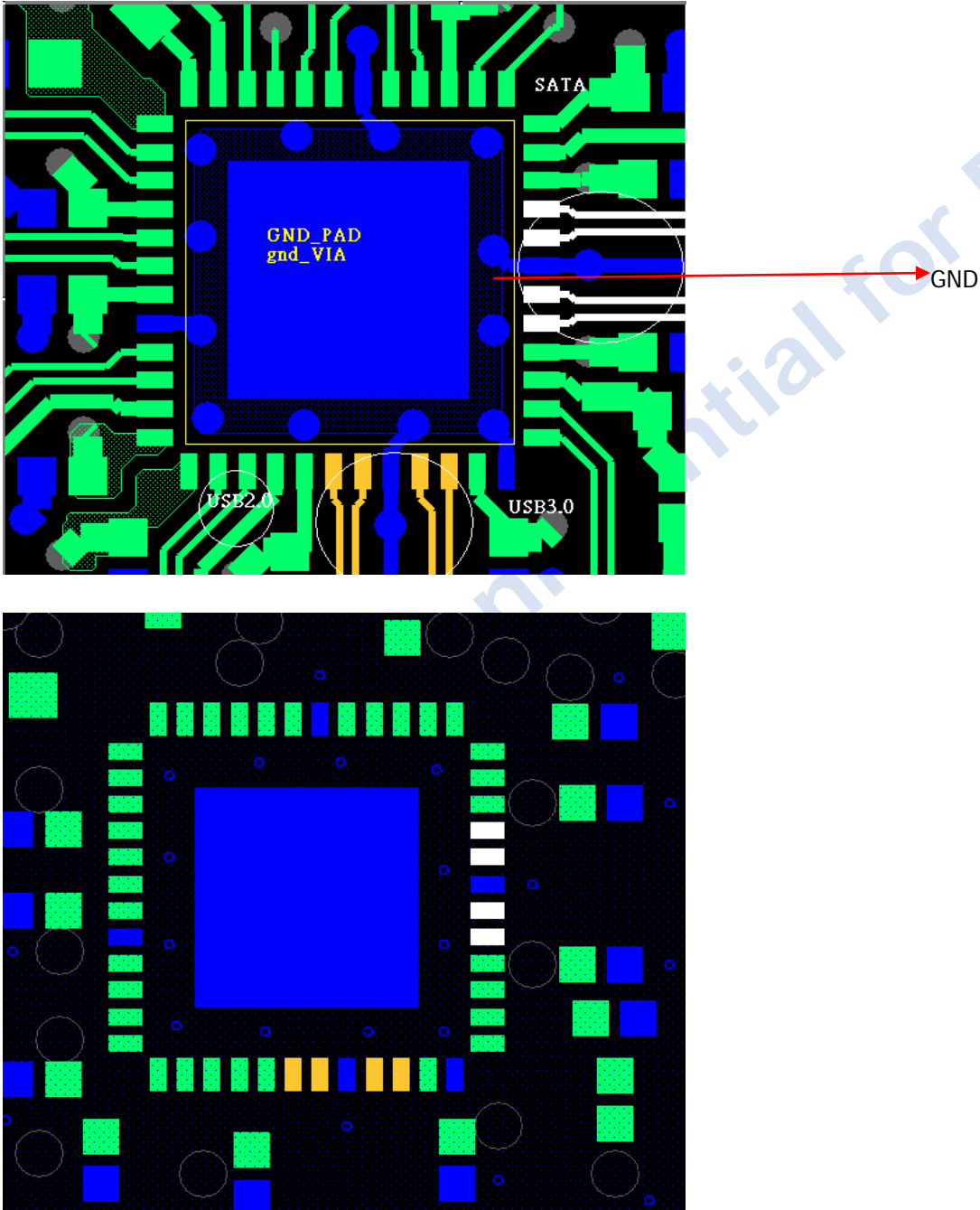
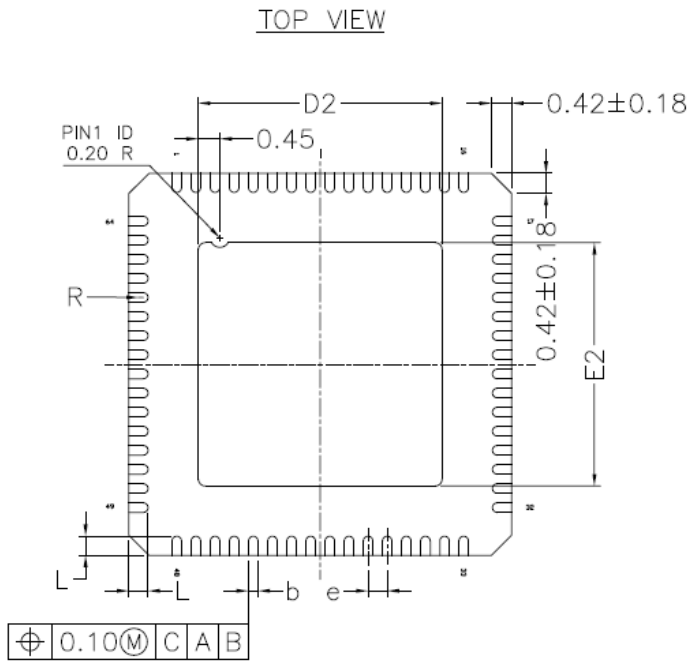
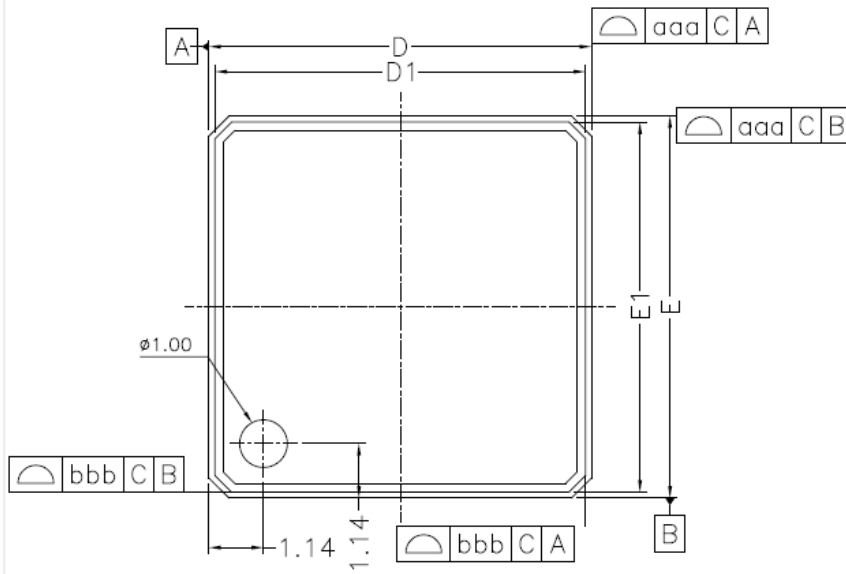
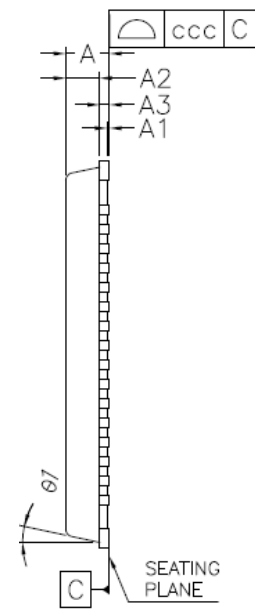


Figure 7: Symbol for via design rule under Thermal pad

10. Package Information



For FAE



AC

\* CONTROLLING DIMENSION : MM

SYMBOL	MILLIMETER			INCH		
	MIN.	NOM.	MAX.	MIN.	NOM.	MAX.
A	0.80	0.85	0.90	0.31	0.033	0.035
A1	0.00	0.01	0.05	0.00	0.0004	0.002
A2	0.00	0.65	0.70	0.00	0.026	0.028
A3	0.20 REF.			0.008 REF.		
b	0.15	0.20	0.25	0.006	0.008	0.010
D	8.00 bsc			0.315 bsc		
D1	7.75 bsc			0.305 bsc		
D2	4.95	5.10	5.25	0.195	0.201	0.207
E	8.00 bsc			0.315 bsc		
E1	7.75 bsc			0.305 bsc		
E2	4.95	5.10	5.25	0.195	0.201	0.207
L	0.30	0.40	0.50	0.012	0.016	0.020
e	0.40 bsc			0.016 bsc		
θ1	0°	---	12°	0°	---	12°
R	0.075	---	---	0.003	---	---
TOLERANCES OF FORM AND POSITION						
aaa	0.10			0.004		
bbb	0.10			0.004		
ccc	0.05			0.002		

**Figure 8: Mechanical Specification – QFN 64**

## 11. Top Marking Information

---

TBD

ASMedia Confidential

ASMedia Confidential