

# AT-320240Q3

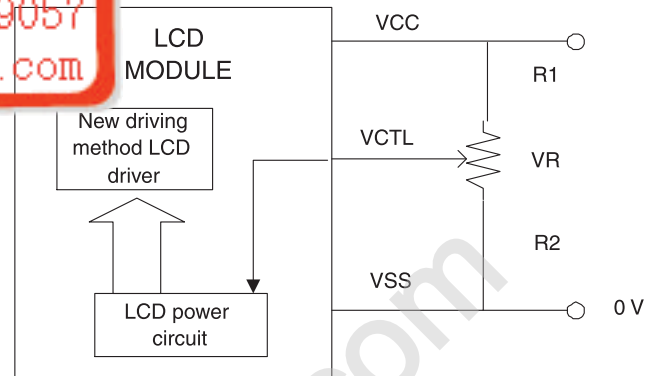
• 320 x 240 dots 1/240 Duty

## FEATURE

1. Construction : STN LCD, TAB IC, LED backlight, Bezel and PCB.
2. Option : Touch Panel, Touch Panel Controller.
3. Built-in Controller / Pure driver.
4. 5V or 3.3V single power input, Built-in DC/DC converter for LED driving.
5. Normal / External driving.

液晶之友 电话: 020-33819057  
<http://www.ledfriends.com>

## POWER SUPPLY



## ELECTRICAL CHARACTERISTICS

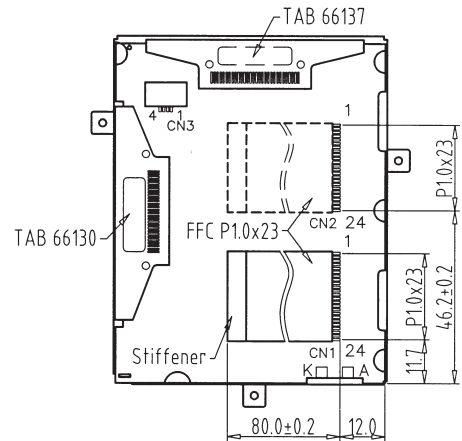
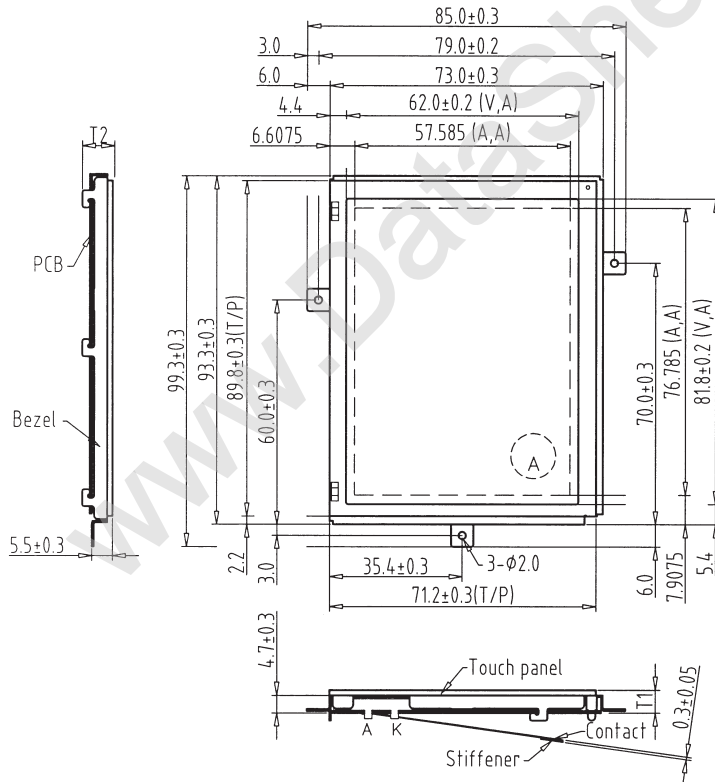
| Parameter                   | Symbol | Condition | Typ. Value | Unit. |
|-----------------------------|--------|-----------|------------|-------|
| LCD Driving Voltage         | VLCD   | 25°C      | 22.9       | V     |
| Supply Current (Controller) | IDD    | VDD=3.3V  | 20         | mA    |
| Supply Current (Driver)     | IDD    | VDD=3.3V  | 1.5        | mA    |

## INTERFACE

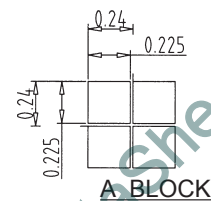
| 1      | 2   | 3   | 4    | 5  | 6   | 7   | 8   | 9   | 10  | 11  | 12  |
|--------|-----|-----|------|----|-----|-----|-----|-----|-----|-----|-----|
| /RESET | /RD | /WR | /CS  | A0 | DB0 | DB1 | DB2 | DB3 | DB4 | DB5 | DB6 |
| 13     | 14  | 15  | 16   | 17 | 18  | 19  | 20  | 21  | 22  | 23  | 24  |
| DB7    | VDD | VSS | VCTL | NC | SK  | D0  | DI  | CS  | INT | A   | K   |

## PURE DRIVER

| 1    | 2      | 3  | 4  | 5       | 6   | 7   | 8  | 9  | 10  | 11  | 12 |
|------|--------|----|----|---------|-----|-----|----|----|-----|-----|----|
| D0   | D1     | D2 | D3 | /DISOFF | FLM | M   | LP | CP | VCC | VSS | NC |
| 13   | 14     | 15 | 16 | 17      | 18  | 19  | 20 | 21 | 22  | 23  | 24 |
| VCTL | /RESET | SK | DO | DI      | CS  | INT | A  | K  | NC  | NC  | NC |



Back view



A BLOCK

### THICKNESS:

| VERSION      | T1        | T2        |
|--------------|-----------|-----------|
| EL BACKLIGHT | 4.2 ± 0.3 | 6.7 ± 0.3 |
| Touch Panel  | 6.1 ± 0.3 | 8.6Max    |

### Connector

CN1/2: Molex:52207-2490  
 AMP:2487951-4