

Preliminary Specification

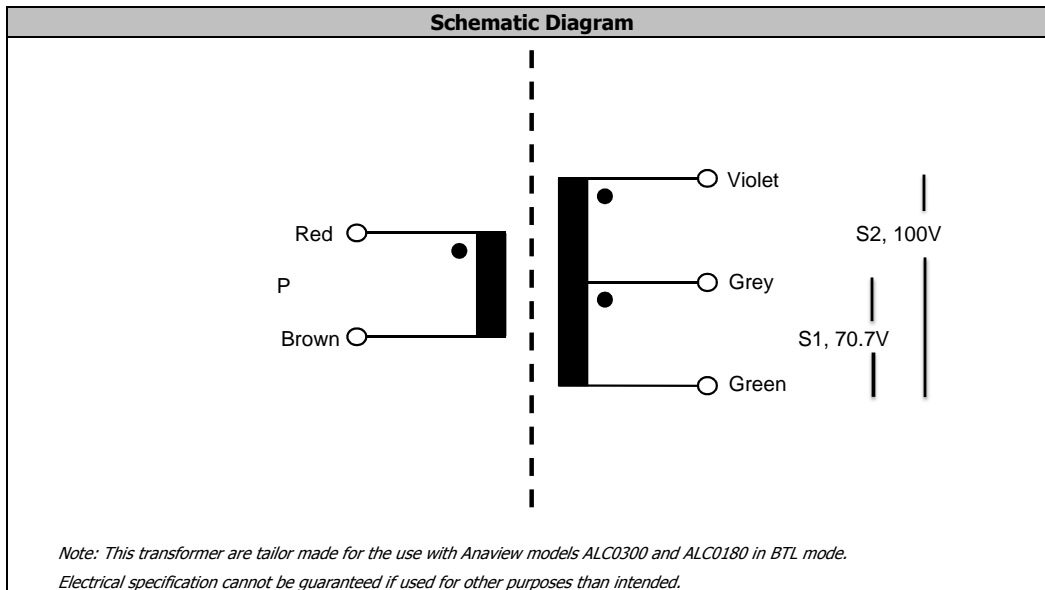
Item no.	AT350-P1S2	REV	PA	Issue	1	Date	20160104
Designed by	RAKJ					Date	20160104
Checked by						Date	

Specification	Audio transformer	REV
Item description	Tailor made for ALC0300/ALC0180 modules	

Electrical specifications @25°C						
Item	Test Item	Pins measured	Value	Pins shorted	Test Condition	Note
1	Insertion loss	P to S1/S2	typ. 0.5dB (10%)		30 Hz	@25°C wdgn Temp
2	Bandwidth*	P to S1/S2	<-1dB		30 Hz - 20 kHz	
3	THD+N	P to S1/S2	< 2%		30 Hz	@350W output power
5	Dielectric Strength	P to S1/S2	< 0.1mA		500Vdc	
6	Output voltage**	S1/S2	70.7 / 100 Vrms			
7	Continious output power @ 40°C Trise		175W			
8						
9						
10						
11						
12						
13						
14						
15						
16						
17						
18						
19	*At 350W output power; core will be saturated slightly below 30Hz, -1dB have not been reached at this point but THD > 2%.					
20	**When P are connected to either ALC0300 or ALC0180 in BTL.					

Environmental & Miscellaneous specifications		
Item	Parameter	Note
1	Ambient Temperature	-40°C - 85°C Ambient temperature for ALC0300/0180: 55°C
2	Storage Temperature	-40°C - 85°C
3	Moisture Sensitivity Level	MSL 1 According to IPC/JEDEC J-STD-020
4	UL94 Flammability Rating	V0
5	Unit Weight	4.0 kg
6	Component RoHS compliant according to	Directive 2011/65/EU Of the European Parliament
7	Component REACH compliant according to	Regulation (EC) No 1907/2006 Of the European Parliament
8	Component fulfills solderability requirements for	Lead free soldering According to IPC/JEDEC J-STD-020
9		
10		
11		
12		
13		
14		
15		
16		

Component Packing	
Carton box	
Packing Quantity:	XX pcs/carton box
PACKING MARKING (ETAL DOC GD 5.3.2)	



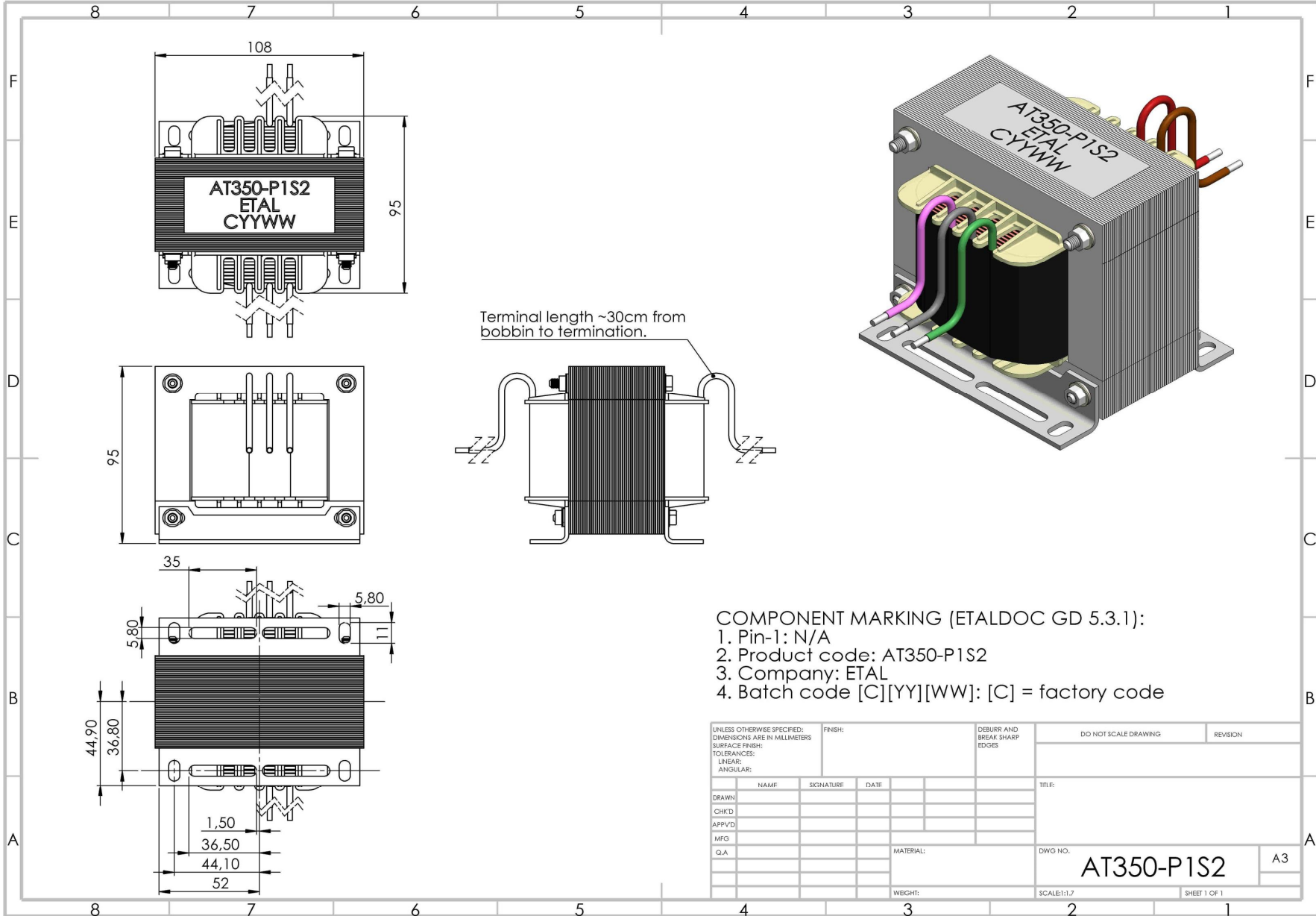
DISCLAIMER
Responsibility for verifying the performance, safety, reliability and compliance with legal standards of end products using this component falls to the manufacturer of said end product. Even for customer-specific products, conclusive validation of the component in the circuit can only be carried out by the customer.

Preliminary Specification

Specification	Audio transformer	REV
Item description	Tailor made for ALC0300/ALC0180 modules	

Item no.	AT350-P1S2	REV	PA	Issue	1	Date	20161121
Designed by	RAKJ					Date	20160104
Checked by						Date	

Mechanical Dimensions



COMPONENT MARKING (ETALDOC GD 5.3.1):

1. Pin-1: N/A
2. Product code: AT350-P1S2
3. Company: ETAL
4. Batch code [C][YY][WW]: [C] = factory code

UNLESS OTHERWISE SPECIFIED: DIMENSIONS ARE IN MILLIMETERS		FINISH:	DERURR AND BREAK SHARP EDGES	DO NOT SCALE DRAWING	REVISION
SURFACE FINISH:					
TOLERANCES:					
LINEAR:					
ANGULAR:					
DRAWN	NAME	SIGNATURE	DATE	TITLE:	
CHK'D					
APP'VD					
MFG					
G.A.				MATERIAL:	DWG NO. AT350-P1S2
				WEIGHT:	A3
				SCALE:1:1.7	SHEET 1 OF 1