

AT7373



6 Pin Primary-side current control IC with High PFC for LED Lighting

Immense Advance Tech.

FEATURES

- Primary-side Fly-back control without the photo-coupler
- Universal Input Voltage Range from 90VAC to 264VAC
- Transition-mode PFC operating
- Built-in Active Power Factor Correction Technique
- Constant Output Current Control LED driver
- Good Line and Load Regulation
- Open-LED Protection on DMG pin
- Over-Voltage Protection on VCC pin
- Short-LED Protection
- Cycle by Cycle Over current Protection on CS pin
- Over-Temperature Protection
- Gate Driving Voltage Clamping
- SOT26 Package Available

DESCRIPTION

AT7373 is a primary-side Fly-back control IC with active power factor correction function for LED lighting application.

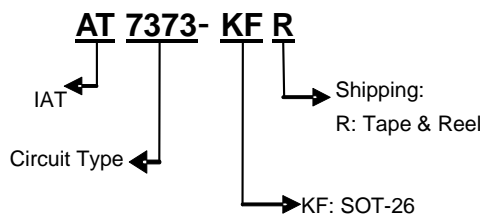
The IC achieves high power factor and low THD operation by BCM mode. The line and load regulation of LED current is about $\pm 3\%$ because of particular control method.

AT7373 also provides gate driving voltage clamping, VCC over voltage protection and system output open/short circuit protection to increase IC performance.

APPLICATIONS

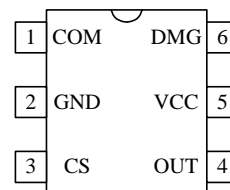
- LED lighting
- Down light
- Tube lamp
- PAR lamp
- Bulb

ORDER INFORMATION



PIN CONFIGURATIONS (TOP VIEW)

SOT-26



AT7373



6 Pin Primary-side current control IC with High PFC for LED Lighting

Immense Advance Tech.

PIN DESCRIPTIONS

Pin Name	Pin Description
COM	Output pin of error amplifier.
GND	Ground return for all internal circuit.
CS	Input current sense pin.
OUT	Gate driver output.
VCC	Power supply pin for all internal circuit.
DMG	Zero current demagnetization sensing.

TYPICAL APPLICATION CIRCUITS

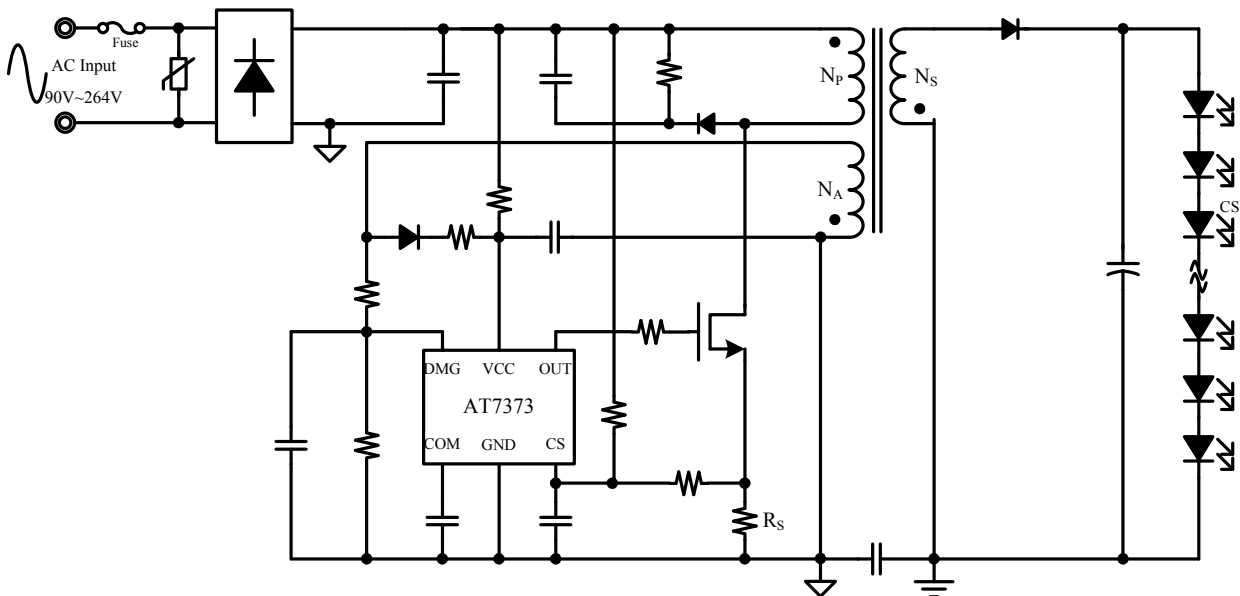


Figure 1

AT7373



6 Pin Primary-side current control IC with High PFC for LED Lighting

Immense Advance Tech.

ABSOLUTE MAXIMUM RATINGS (Note 1)

Parameter	Symbol	Range	Unit
Power supply pin	V_{CC}	40	V
DMG voltage to GND	V_{DMG}	-0.3 to 40	V
OUT voltage to GND	V_{OUT}	-0.3 to 40	V
CS voltage to GND	V_{CS}	-0.3 to 5.5	V
COM voltage to GND	V_{COM}	-0.3 to 5.5	V
Junction Temperature Range	T_j	-40 to +150	°C
Storage Temperature Range	T_{STG}	-65 to +150	°C
Lead Temperature (Soldering 10 sec)	T_{LEAD}	260	°C
Power Dissipation @ $T_A=25$ °C	P_D	0.3	W
Thermal Resistance Junction to Ambient (Note 2)	θ_{JA}	220	°C/W
Thermal Resistance Junction to Case	θ_{JC}	106.6	°C/W
ESD Rating (Human body mode) (Note 3)	V_{ESD}	2	kV

RECOMMENDED OPERATING CONDITIONS (Note4)

Parameter	Symbol	Operation Conditions	Unit
Power supply pin	V_{CC}	34.5	V
DMG voltage to GND	V_{DMG}	-0.3 to 11.2	V
OUT voltage to GND	V_{OUT}	-0.3 to 19	V
CS voltage to GND	V_{CS}	-0.3 to 5	V
COM voltage to GND	V_{COM}	-0.3 to 5	V
Operating Junction Temperature Range	T_J	-40 to +125	°C
Operating Ambient Temperature Range	T_{OPA}	-40 to +85	°C

Note 1: Stresses listed as the above “Absolute Maximum Ratings” may cause permanent damage to the device. These are for stress ratings. Functional operation of the device at these or any other conditions beyond those indicated in the operational sections of the specifications is not implied. Exposure to absolute maximum rating conditions for extended periods may remain possibility to affect device reliability.

Note 2: Thermal Resistance is specified with the component mounted on a low effective thermal conductivity test board in free air at $T_A=25$ °C.

Note 3: Devices are ESD sensitive. Handling precaution recommended.

Note 4: The device is not guaranteed to function outside its operating conditions.

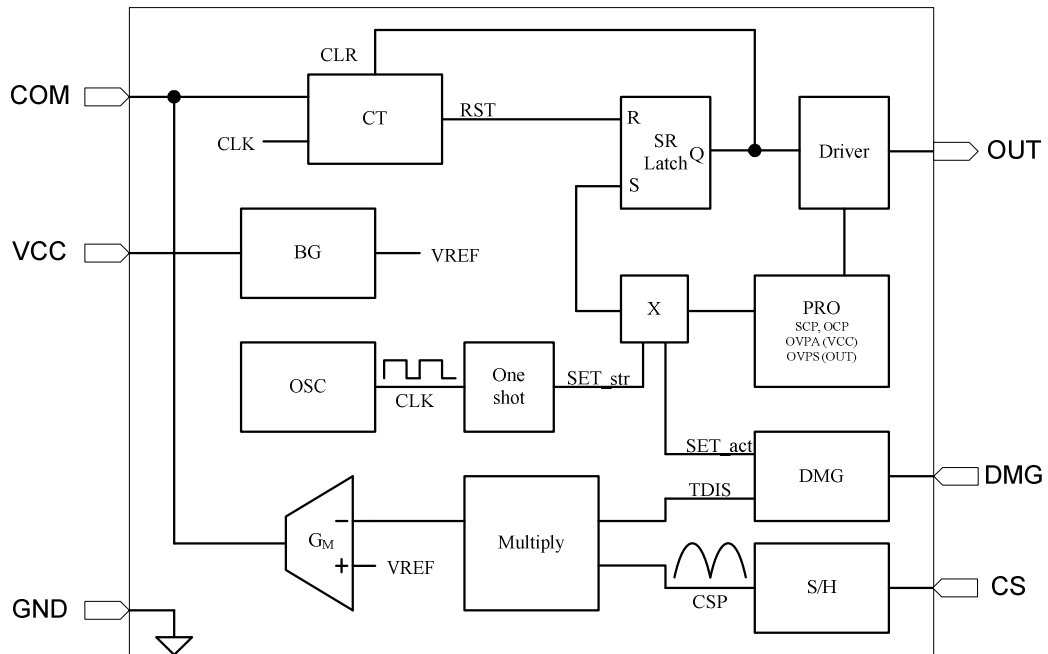
AT7373

6 Pin Primary-side current control IC with High PFC for LED Lighting



Immense Advance Tech.

BLOCK DIAGRAM



Block Diagram

Figure 2

AT7373



6 Pin Primary-side current control IC with High PFC for LED Lighting

Immense Advance Tech.

ELECTRICAL CHARACTERISTICS

T_A= 25°C, unless otherwise specified.

Parameter	Symbol	Condition	Min	Typ	Max	Unit
Turn-on voltage	V _{CC_ON}		17	18	19	V
Turn-off voltage	V _{CC_OFF}		8.5	9.5	10	V
Quiescent current 1	I _{Q1}	V _{CC} =17V, at V _{CC} off	--	30	50	uA
Quiescent current 2	I _{Q2}	Start up at 4.5 KHz	--	600	800	uA
Operation supply current	I _{CC}		--	2.5	3.0	mA
PROTECTION						
VCC voltage protection	V _{OVP}		31	32	34	V
Output voltage protection	V _{OVP}		10	10.5	11	V
CS limit voltage	V _{OCP}		1.15	1.25	1.35	V
Short circuit protection(Note5)	V _{O_STR}		--	3	--	V
OSCILLATOR						
Start up timer	T _{STR}		--	222	--	us
GM AMPLIFIER						
Transconductance	G _M		--	60	--	uA /V
Source current	I _{COMP_SOU}		--	20	--	uA
DRIVER						
Dropout voltage	V _{OH}	V _{CC} =33V, I _O = 10mA	--	1.2	1.5	V
	V _{OL}	V _{CC} =33V, I _O = -10mA	--	0.12	--	V
Rising time	T _{RISE}	V _{CC} =20V, C _O =1nF	--	40	--	ns
Falling time	T _{FAIL}	V _{CC} =20V, C _O =1nF	--	80	--	ns
Output clamp voltage	V _{O_CLAMP}		--	--	19	V
Leading edge blanking time	LEB _T		--	0.5	--	ns
OTP(Note 6)						
OTP Trip Point			--	150	--	°C
OTP Release Point			--	115	--	°C
OTP Threshold Hysteresis			--	35	--	°C

Note 5: Guaranteed by design.

Note 6: Auto Recovery Type.

AT7373

6 Pin Primary-side current control IC with High PFC for LED Lighting



Immense Advance Tech.

APPLICATION INFORMATION

1. Function Description

The AT7373 is a constant current Fly-back controller with primary side control and PFC function for LED lighting applications.

The controller is BCM operation with constant on time based regulator design to achieve high power factor performance.

The AT7373 is built-in functions of VCC over voltage protection, open LED protection, short LED protection, over temperature protection, primary side current limit, and gate clamp within.

The AT7373 sense switch current from CS voltage Multiplier by TDIS to get the output current information. By the system close loop feedback. The average output current can express as below.

$$I_{OUT} = \frac{N_P}{N_S} \times \frac{0.333 * \eta}{2 * R_S}$$

2. Pin Detail

2-1. COM

This is the output of the Gm amplifier. Connect with a suitable RC network to ground.

2-2. GND

GND is the reference node of internal circuit.

2-3. CS

MOSFET current signal sensing for Multiply and current limit setting function

$$I_{CS(Limit)} = \frac{1.25}{R_S}$$

2-4. OUT

Gate drive for external MOSFET switch and is built-in Gate clamp function.

2-5. VCC

Power supply for the controller during normal operation. The controller will start up when VCC reaches 18V (typical) and will shut-down when VCC voltage is below 9.5V (typical). A decoupling capacitor should be connected between the VCC and GND pin as close as possible.

The AT7373 perform VCC over voltage protection though VCC pin. Once VCC pin exceed in 32V, AT7373 turns off and latch out the MOSFET switcher until VCC under V_{CC_OFF} .

2-6. DMG

The Output voltage is reflected by the auxiliary winding(N_{AUX}) voltage of Flyback transformer, the DMG pin can sense output information to depart from start up voltage(V_{O_STR}) and protection voltage(V_{O_OVP}).

When DMG sense voltage under V_{O_STR} , the circuit will work on short circuit protection, and the system switching frequency $F_{STR}=1/T_{str}$.

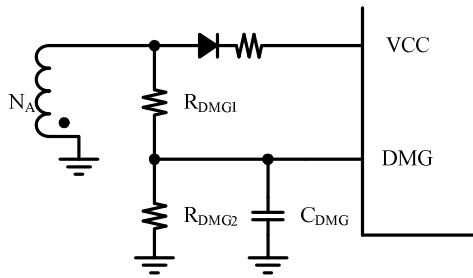
When DMG sense voltage over V_{O_OVP} , the circuit will work on over voltage protection, it will latch out off until VCC under V_{CC_OFF} .

AT7373

6 Pin Primary-side current control IC with High PFC for LED Lighting



Immense Advance Tech.



OVP Protection (By DMG)

$$V_{DMG_OVP} = \frac{N_S}{N_A} \times V_{OVPS} \times \frac{R_{DMG1} + R_{DMG2}}{R_{DMG2}}$$

OVP Protection (By VCC)

$$V_{VCC_OVP} = \frac{N_S}{N_A} \times V_{OVPA}$$

Short Circuit Protection

$$V_{O_Short} = \frac{N_S}{N_A} \times V_{O_STR} \times \frac{R_{DMG1} + R_{DMG2}}{R_{DMG2}}$$

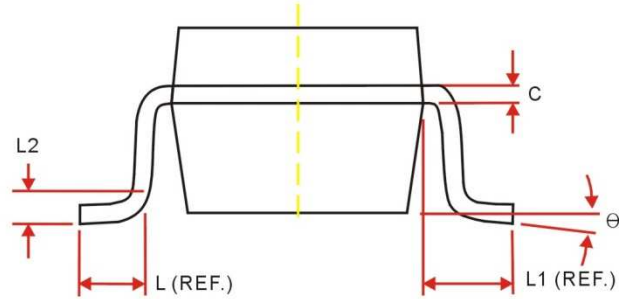
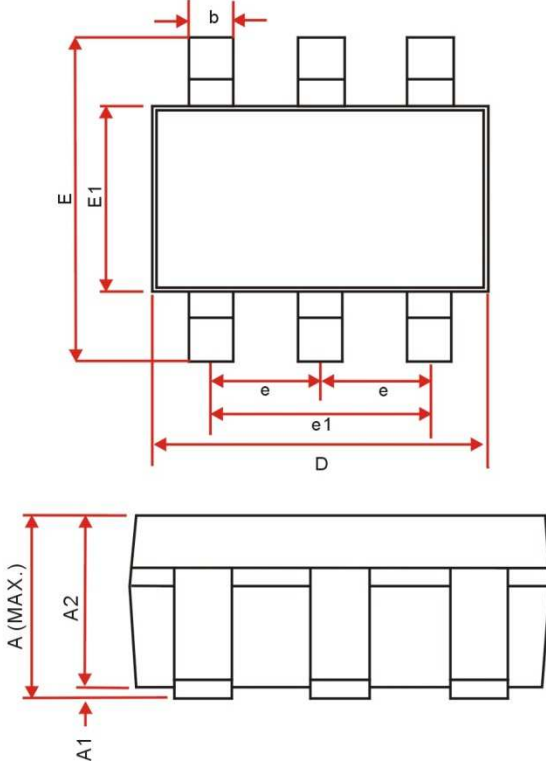
AT7373



6 Pin Primary-side current control IC with High PFC for LED Lighting

Immense Advance Tech.

PACKAGE OUTLINE DIMENSIONS SOT-26 PACKAGE OUTLINE DIMENSIONS



Symbol	Dimensions In Millimeters	
	Min	Max
A	1.45 MAX.	
A1	0	0.15
A2	0.90	1.30
C	0.08	0.22
D	2.90 REF.	
E	2.80 REF.	
E1	1.60 REF.	
L	0.30	0.60
L1	0.60 REF.	
L2	0.25 REF.	
θ	0°	10°
b	0.30	0.50
e	0.95 REF.	
e1	1.90 REF.	

Note:

Information provided by IAT is believed to be accurate and reliable. However, we cannot assume responsibility for use of any circuitry other than circuitry entirely embodied in an IAT product; nor for any infringement of patents or other rights of third parties that may result from its use. We reserve the right to change the circuitry and specifications without notice.

Life Support Policy: IAT does not authorize any IAT product for use in life support devices and/or systems. Life support devices or systems are devices or systems which, (I) are intended for surgical implant into the body or (II) support or sustain life, and whose failure to perform, when properly used in accordance with instructions for use provided in the labeling, can be reasonably expected to result in a significant injury to the user. Typical numbers are at 25°C and represent the most likely norm.