

Pioneer

Service Manual

ORDER NO.
CRT2276

7 INCH WIDE AV SYSTEM DISPLAY /CD PLAYER

AVX-P7000CD

UC,EW,ES

7 INCH WIDE AV SYSTEM DISPLAY

AVX-7000

UC,EW,ES

● This service manual should be used together with the following manual(s):

Model	Order No.	Mech. Module	Remarks
AVX-P7000CD/UC,EW,ES	CRT2379	—	—
AVX-7000/UC,EW,ES	CRT2380	—	—

● This manual contains the information on the LCD module and the Drive mechanism unit used in the AVX-P7000CD and AVX-7000. For the other information, refer to the main manuals listed above.

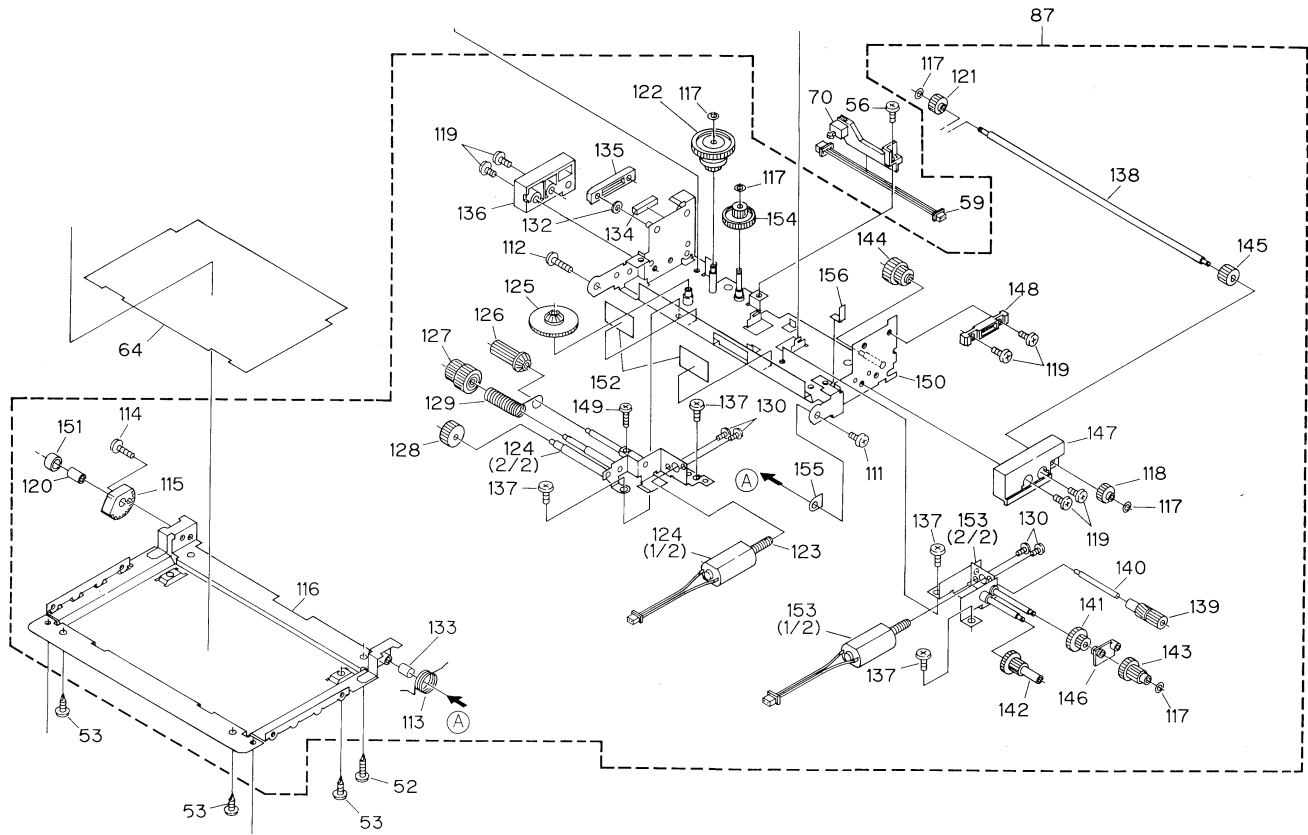
CONTENTS

1. EXPLODED VIEWS AND PARTS LIST	2
2. SCHEMATIC DIAGRAM.....	4
3. PCB CONNECTION DIAGRAM.....	6
4. ELECTRICAL PARTS LIST	10
5. GENERAL INFORMATION.....	12
5.1 DISASSEMBLY	12

PIONEER CORPORATION 4-1, Meguro 1-Chome, Meguro-ku, Tokyo 153-8654, Japan
PIONEER ELECTRONICS SERVICE INC. P.O.Box 1760, Long Beach, CA 90801-1760 U.S.A.
PIONEER ELECTRONIC [EUROPE] N.V. Haven 1087 Keetberglaan 1, 9120 Melsele, Belgium
PIONEER ELECTRONICS ASIACENTRE PTE.LTD. 253 Alexandra Road, #04-01, Singapore 159936

1. EXPLODED VIEWS AND PARTS LIST

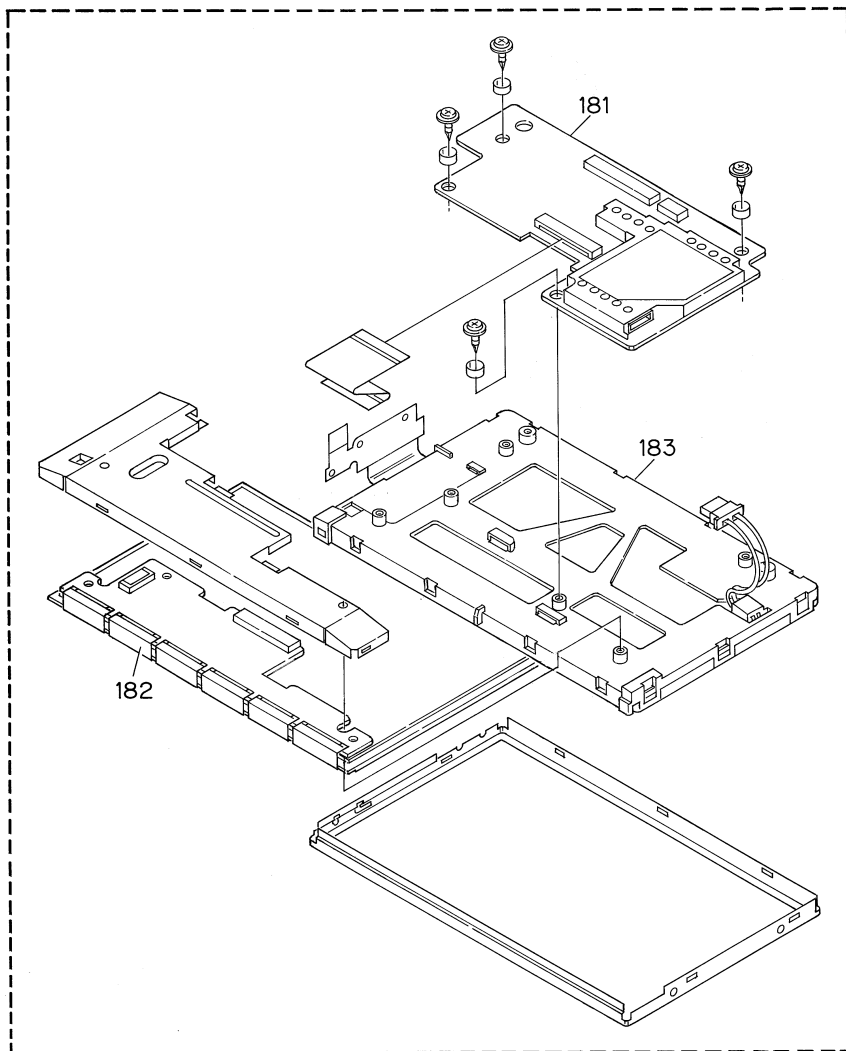
1.1 DRIVE MECHANISM UNIT



● DRIVE MECHANISM UNIT SECTION PARTS LIST

Mark No.	Description	Part No.	MarkNo.	Description	Part No.
111	ScrewM2X3	FB1521	136	Guide	376Y
112	ScrewM2X9	FB1523	137	ScrewM2.6X2.5	FB1519
113	Spring	FS1573	138	Shaft	FD1233
114	ScrewM2X5.5	FB1522	139	Worm Wheel	373V
115	Gear	FH1267	140	Gear Shaft	FD1232
116	Cover Unit(UC,EW model)	FK1850	141	Gear	373W
	Cover Unit(ES model)	FK1887	142	Gear	374F
117	Washer	FX1055	143	Gear	374G
118	Gear	374K	144	Gear	374H
119	ScrewM2.6X3.5	FB1520	145	Gear	374J
120	Collar	FH1268	146	Toe Gear	376W
121	Gear	374M	147	Guide	376Z
122	Torque Limiter	376F	148	Guide	376X
123	Gear	376J	149	ScrewM1.7X6	FB1524
124	Motor Assy	CXX1398	150	Try Assy	FK1847
125	Gear	376T	151	Spacer	HF1282
126	Gear	376U	152	Sheet	FX2482
127	Gear	376V	153	Motor Assy	CXX1399
128	Gear	FH1266	154	Worm Wheel	373T
129	Spring	FS1574	155	Nonwoven Fabric	FX2618
130	ScrewM2X3	FB1031	156	Sheet	FX2594
132	Collar	FX2631			
133	Pipe	FX2619			
134	Cushion	FX2483			
135	Guide	377A			

1.2 LCD MODULE



● LCD MODULE SECTION PARTS LIST

Mark No.	Description	Part No.
181	Video Unit	NMP70-8398-112
182	TFT-LCD Module	TFD70W14A
183	B/L Unit	NMP75-8376-211

2. SCHEMATIC DIAGRAM

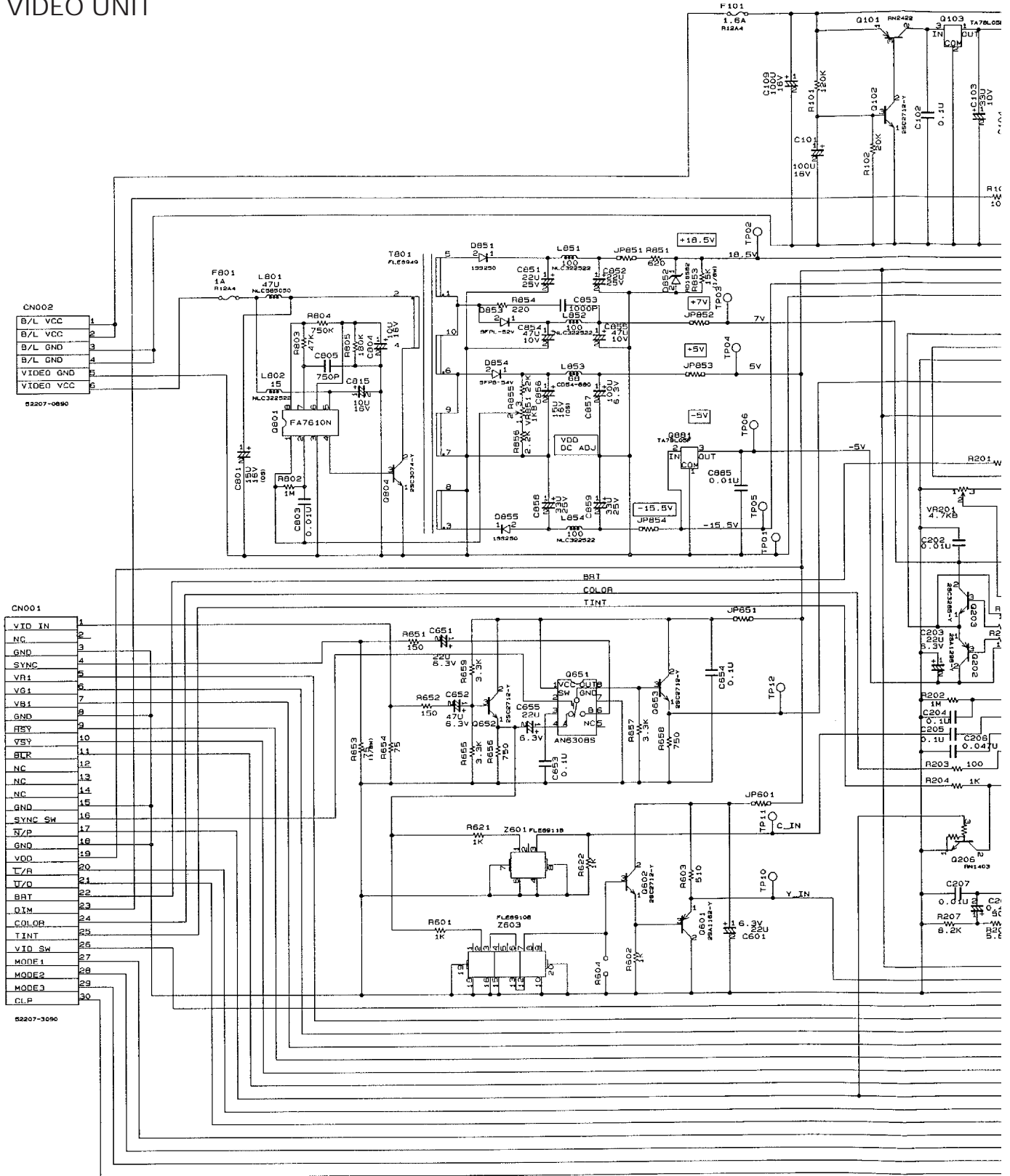
2.1 VIDEO UNIT

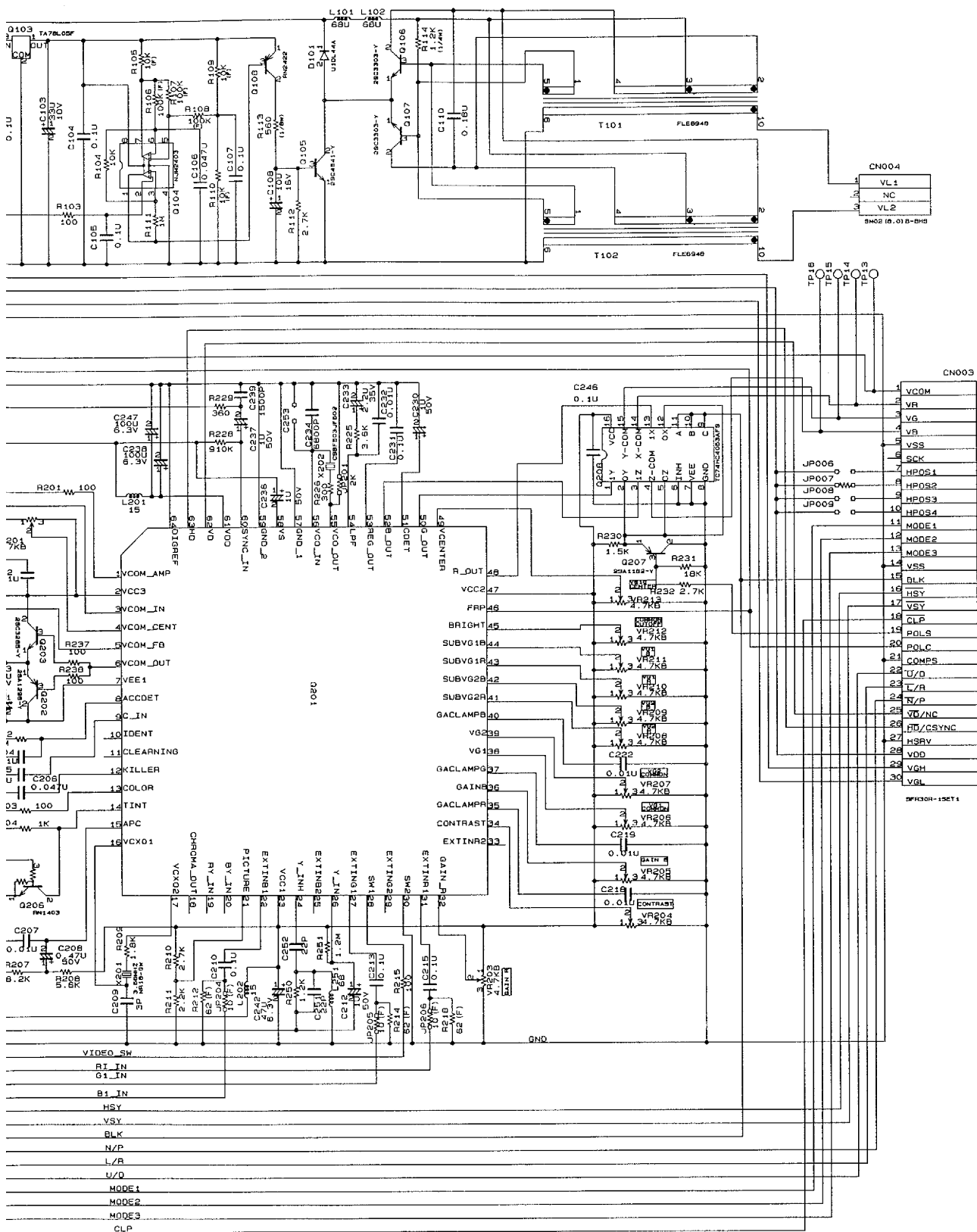
A

B

C

D





A
B
C
D

3. PCB CONNECTION DIAGRAM

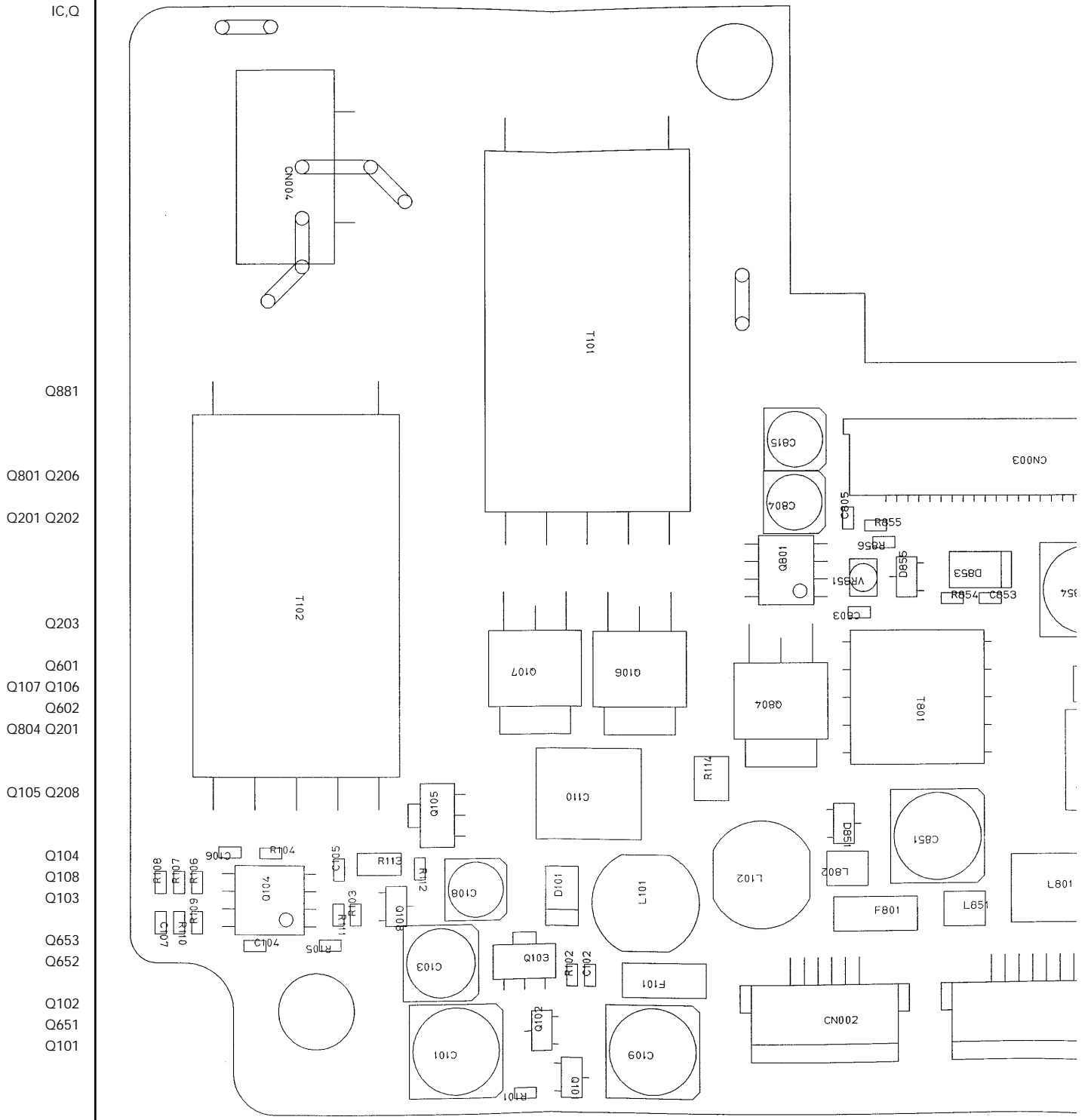
3.1 VIDEO UNIT

A

B

C

D

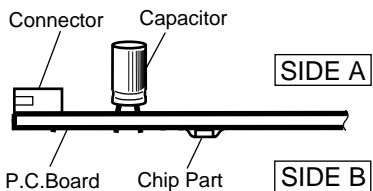


NOTE FOR PCB DIAGRAMS

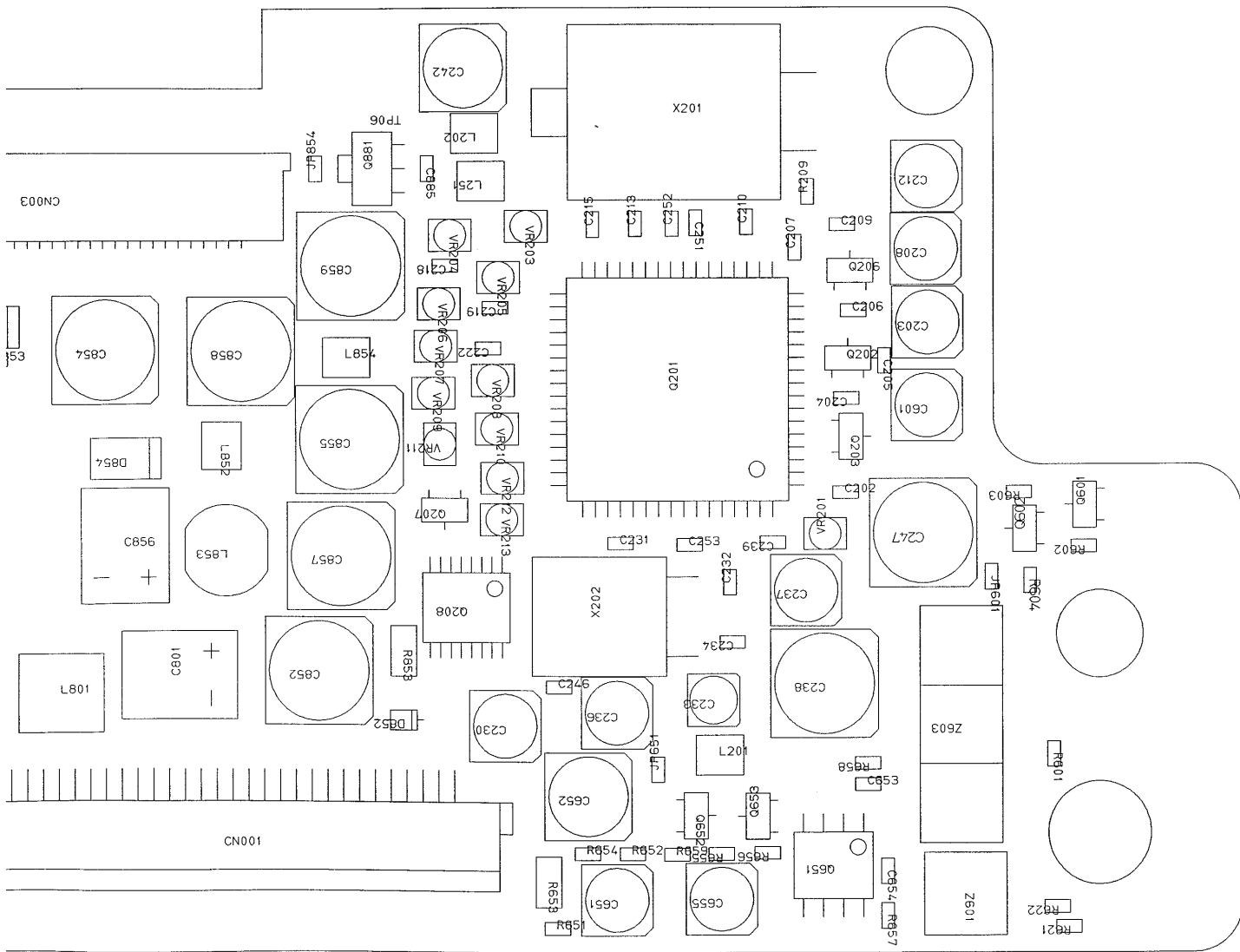
1. The parts mounted on this PCB include all necessary parts for several destination.

For further information for respective destinations, be sure to check with the schematic diagram.

2. Viewpoint of PCB diagrams



SIDE A



A

B

C

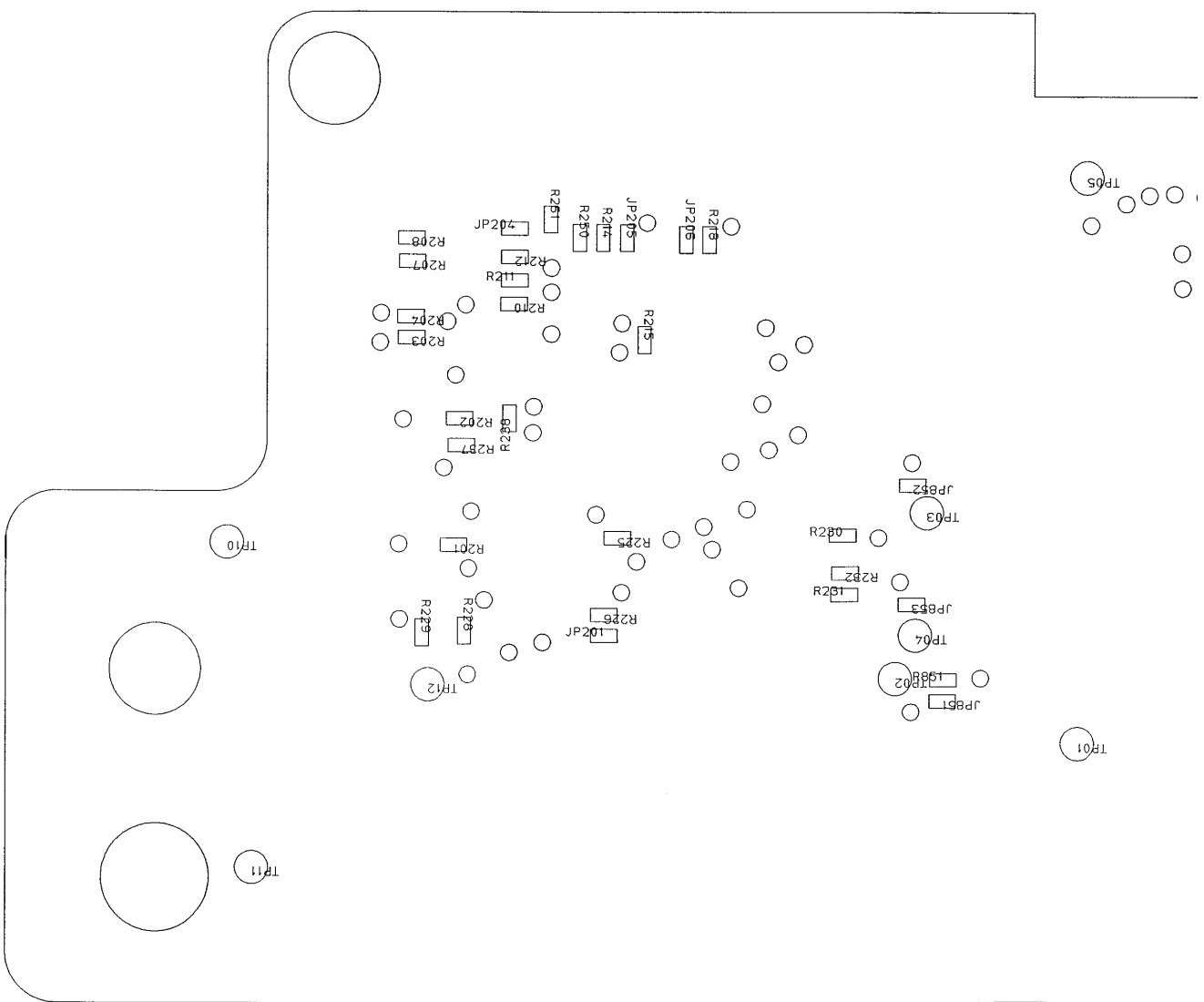
D

A

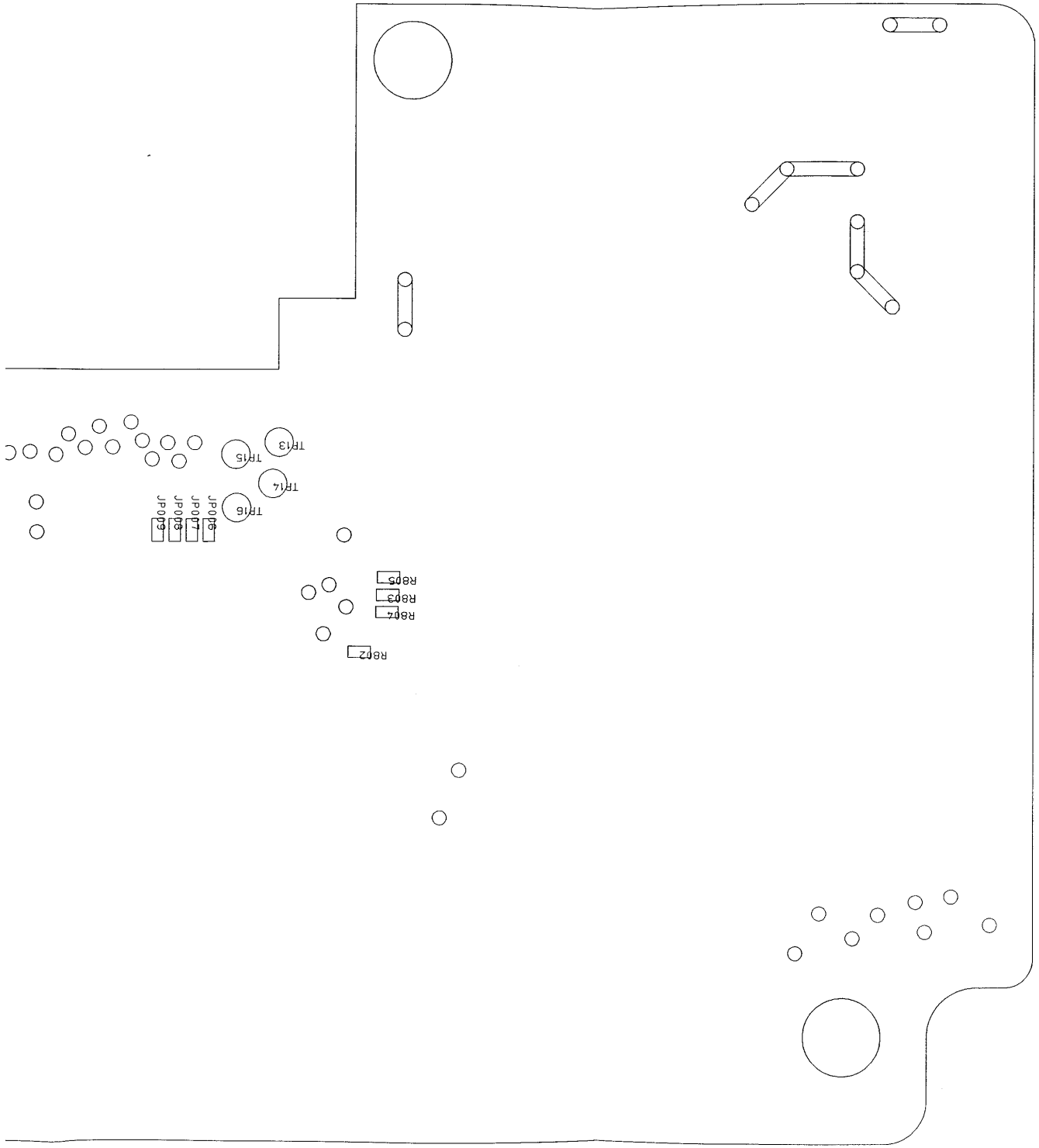
B

C

D



SIDE B



A
B
C
D

5. ELECTRICAL PARTS LIST

NOTE:

- Parts whose parts numbers are omitted are subject to being not supplied.
- The part numbers shown below indicate chip components.

Chip Resistor

RS1/OSOOOJ,RS1/OOSOOOJ

Chip Capacitor (except for CQS.....)

CKS....., CCS....., CSZS.....

====Circuit Symbol and No.====Part Name	Part No.	====Circuit Symbol and No.====Part Name	Part No.
Unit Number :		VR 203	
Unit Name : Video Unit		VR 204	
		VR 205	
MISCELLANEOUS		VR 206	
		VR 207	
Q 101	RN2422		
Q 102	2SC2712-Y	VR 208	
Q 103	TA78L05F	VR 209	
Q 104	NJM2403M	VR 210	
Q 105	2SC4541-Y	VR 211	
		VR 212	
Q 106	2SC3303-Y	VR 213	
Q 107	2SC3303-Y	VR 851	
Q 108	RN2422	X 201	NR18-GW3.58
Q 201	NJW1300A	X 202	CSBF503JF502
Q 202	2SA1298-Y	Z 601	FLE6911B
Q 203	2SC3265-Y		
Q 206	RN1403	Z 603	FLE6910B
Q 207	2SA1162-Y	JP 006	RS1/16S0R0J
Q 208	TC74HC4053AFS	JP 007	RS1/16S0R0J
Q 601	2SA1162-Y	JP 008	RS1/16S0R0J
		JP 009	RS1/16S0R0J
Q 602	2SC2712-Y		
Q 651	AN6308S	JP 201	RS1/16S202J
Q 652	2SC2712-Y	JP 204	RS1/16S10R0F
Q 653	2SC2712-Y	JP 205	RS1/16S10R0F
Q 801	FA7610N	JP 206	RS1/16S10R0F
		JP 601	RS1/16S0R0J
Q 804	2SC3074-Y		
Q 881	TA79L05F	JP 602	RS1/16S0R0J
D 101		JP 651	RS1/16S0R0J
D 851		JP 851	RS1/16S0R0J
D 852		JP 852	RS1/16S0R0J
		JP 853	RS1/16S0R0J
D 853		JP 854	
D 854		CN 001	RS1/16S0R0J
D 855	1SS250	CN 002	
F 101		CN 003	
F 801	CEK1173	CN 004	
L 101			
L 102			
L 201	LCTA150J3225		
L 202	LCTA150J3225	R 101	RS1/16S124J
L 251		R 102	RS1/16S203J
		R 103	RS1/16S101J
L 801		R 104	RS1/16S103J
L 802	LCTA150J3225	R 105	RS1/16S1002F
L 851	LCTA101J3225		
L 852	LCTA101J3225	R 106	RS1/16S1003F
L 853		R 107	RS1/16S1003F
		R 108	RS1/16S1003F
L 854	LCTA101J3225	R 109	RS1/16S1002F
T 101	FLE6948	R 110	RS1/16S1002F
T 102	FLE6948		
T 801	FLE6949		
VR 201			

RESISTORS

====Circuit Symbol and No.====Part Name	Part No.	====Circuit Symbol and No.====Part Name	Part No.
R 111	RS1/16S105J	C 207	CKSRYP103K50
R 112	RS1/16S272J	C 208	CEHV47M50
R 113	RS1/8S561J	C 209	CCSRCH030C50
R 114	RS1/4S122J	C 210	CKSRYP104Z25
R 201	RS1/16S101J	C 212	CEHV1R0M50
R 202	RS1/16S105J	C 213	CKSRYP104Z25
R 203	RS1/16S101J	C 215	CKSRYP104Z25
R 204	RS1/16S102J	C 218	CKSRYP103K50
R 207	RS1/16S822J	C 219	CKSRYP103K50
R 208	RS1/16S562J	C 222	CKSRYP103K50
R 209	RS1/16S182J	C 230	CEHV1R0M50
R 210	RS1/16S272J	C 231	CKSRYP104Z25
R 211	RS1/16S222J	C 232	CKSRYP103K25
R 212	RS1/16S62R0F	C 233	CEHV2R2M50
R 214	RS1/16S62R0F	C 234	CKSRYP682K50
R 215	RS1/16S101J	C 236	CEHV1R0M50
R 218	RS1/16S62R0F	C 237	CEHV1R0M50
R 225	RS1/16S472J	C 238	CEHV101M6R3
R 226	RS1/16S301J	C 239	CKSRYP152K50
R 228	RS1/16S911J	C 242	CEHV470M6R3
R 229	RS1/16S361J	C 246	CKSRYP104Z25
R 230	RS1/16S152J	C 247	CEHV101M6R3
R 231	RS1/16S183J	C 251	CCSRCH220J50
R 232	RS1/16S272J	C 252	CCSRCH220J50
R 237	RS1/16S101J	C 253	
R 238	RS1/16S101J	C 601	CEHV220M6R3
R 250	RS1/16S122J	C 651	CEHV220M6R3
R 251	RS1/16S105J	C 652	CEHV470M6R3
R 601	RS1/16S102J	C 653	CKSRYP104Z25
R 602	RS1/16S102J	C 654	CKSRYP104Z25
R 603	RS1/16S511J	C 655	
R 604	RS1/16S102J	C 801	CEHV220M6R3
R 621	RS1/16S102J	C 803	CKSRYP103K50
R 622	RS1/16S102J	C 804	
R 651	RS1/16S151J	C 805	CCSRCH751J25
R 652	RS1/16S151J	C 815	
R 653	RS1/16S750J	C 851	
R 654	RS1/16S750J	C 852	
R 655	RS1/16S332J	C 853	CKSRYP102K50
R 656	RS1/16S751J	C 854	
R 657	RS1/16S332J	C 855	
R 658	RS1/16S751J	C 856	
R 659	RS1/16S332J	C 857	
R 802	RS1/16S105J	C 858	
R 803	RS1/16S473J	C 859	
R 804	RS1/16S754J	C 885	CKSRYP103K50
R 805	RS1/16S184J		
R 851	RS1/16S621J		
R 853	RS1/16S153J		
R 854	RS1/16S221J		
R 855	RS1/16S223J		
R 856	RS1/16S222J		

CAPACITORS

C 101	CEHV101M16
C 102	CKSRYP104Z25
C 103	CEHV330M10
C 104	CKSRYP104Z25
C 105	CKSRYP104Z25
C 106	CKSRYP473K16
C 107	CKSRYP104Z25
C 108	CEHV100M16
C 109	CEHV101M16
C 110	
C 202	CKSRYP103K50
C 203	
C 204	CKSRYP104Z25
C 205	CKSRYP104Z25
C 206	CKSRYP473K16

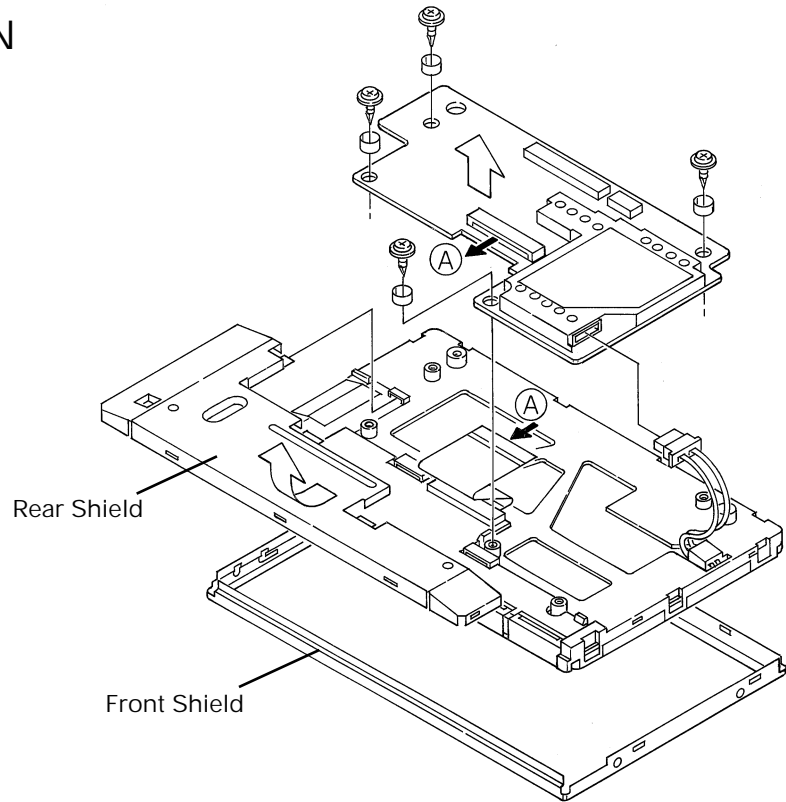
	1st production (TFD70W14-MM1)	Running change (TFD70W14-MM2)
HPOS	JP007: 0Ω Resistor (HPOS2=Hi)	JP008:0Ω Resistor (HPOS3=Hi)

5. GENERAL INFORMATION

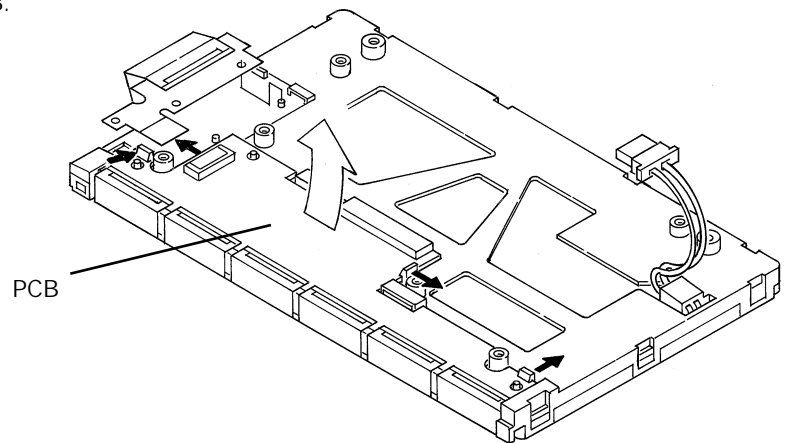
5.1 DISASSEMBLY

● Removing the Back Light Unit

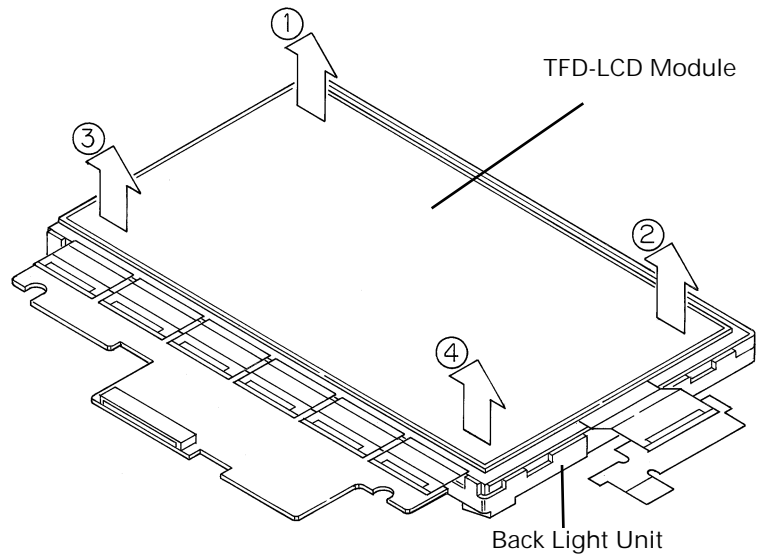
1. Remove the four screws.
2. Disconnect the two connectors.
3. Remove the rear shield and front shield.



4. Disconnect the connector and remove the PCB.

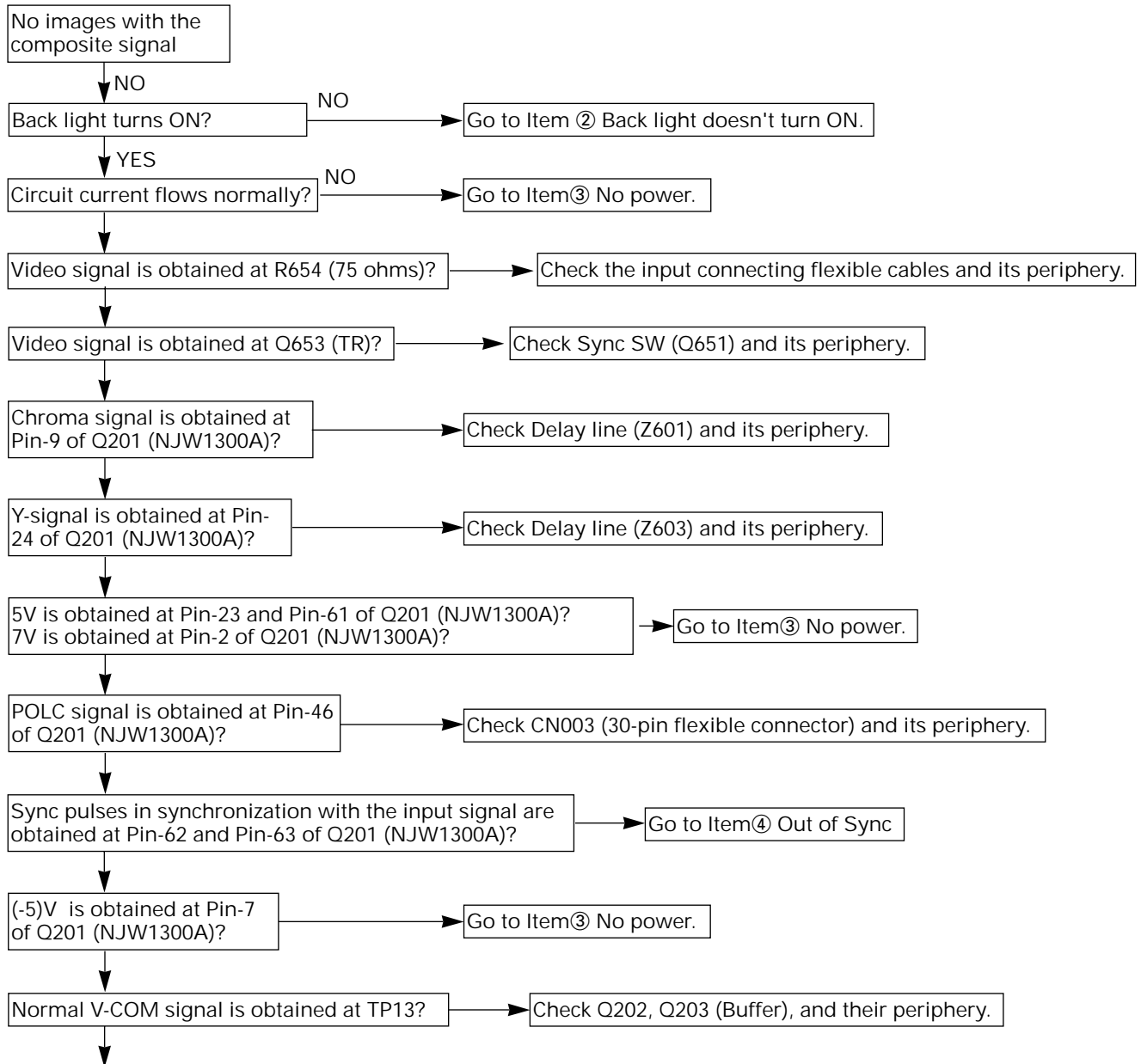


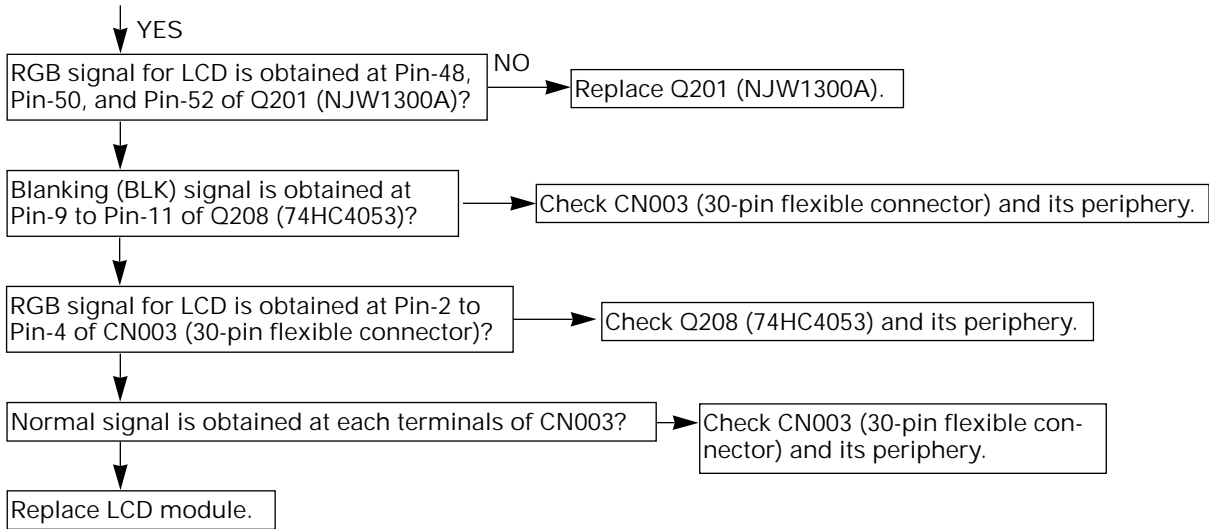
5. Remove the TFD-LCD Module.



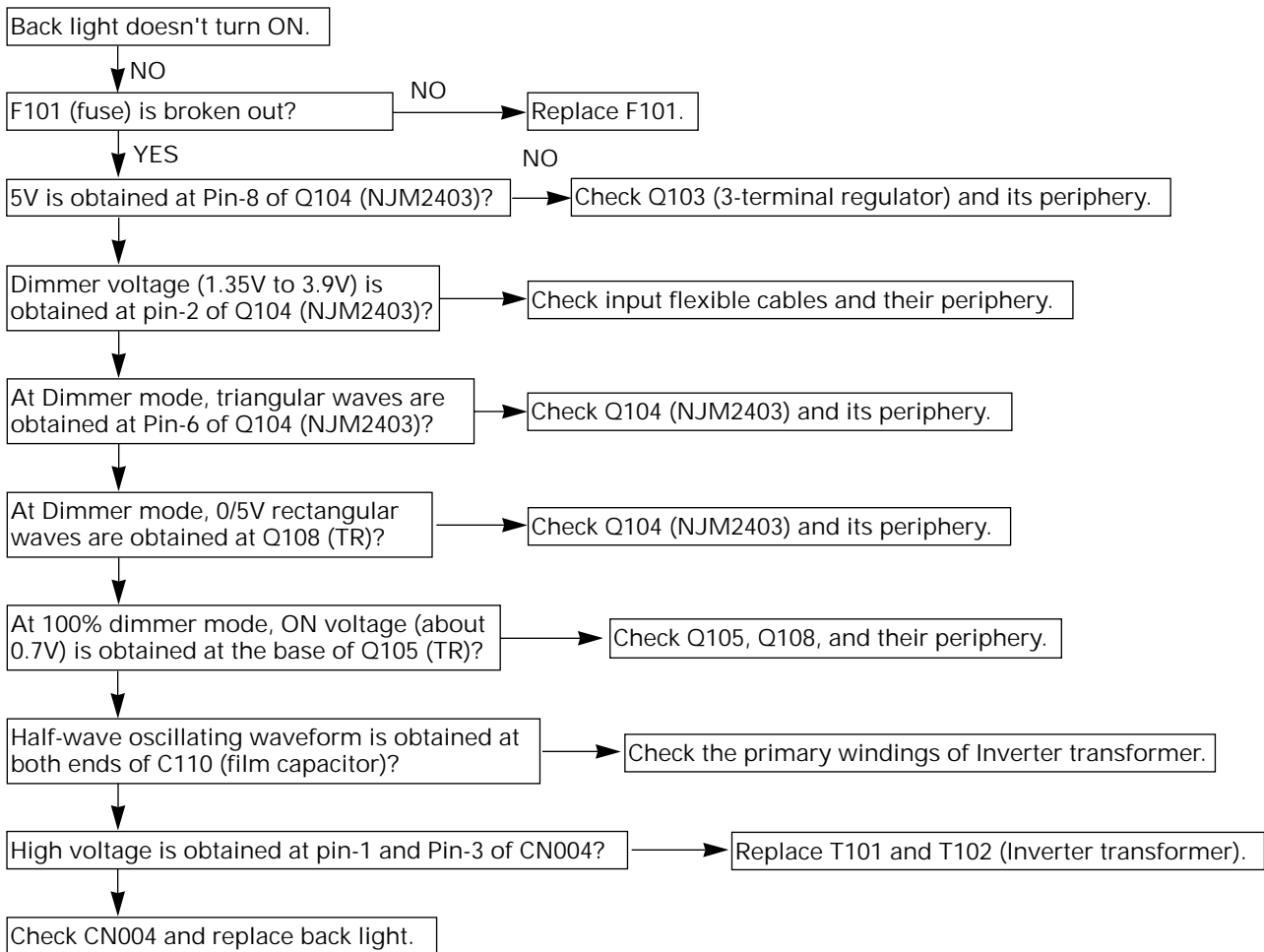
● CWX2389 LCD module troubleshooting

① No images with the composite signal

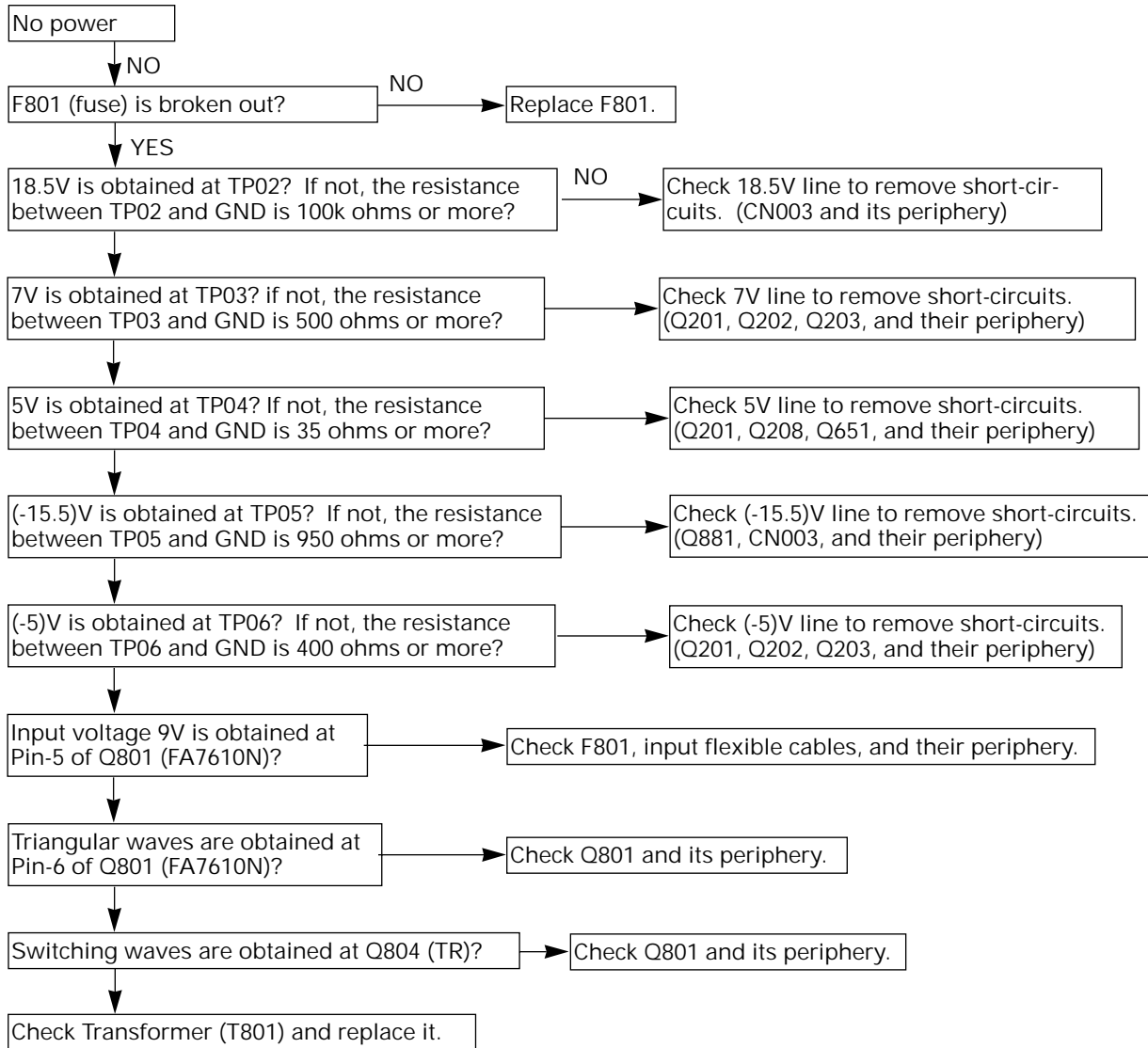




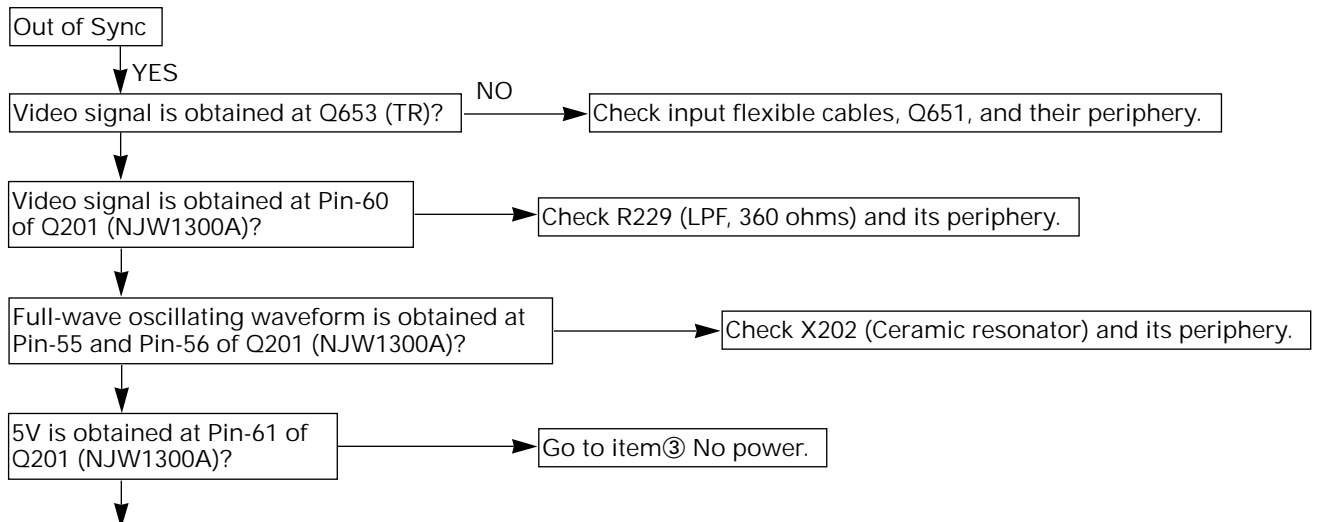
②Back light doesn't turn ON.



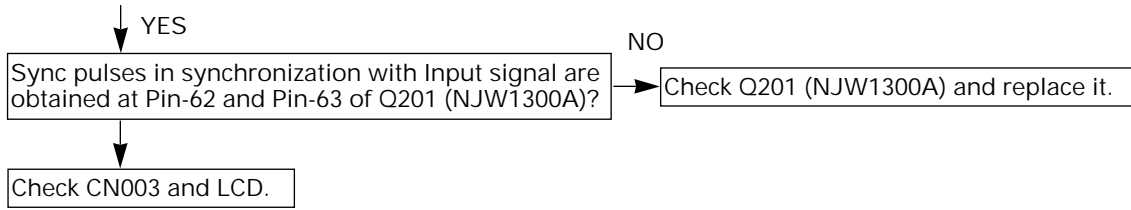
③No power



④Out of Sync



AVX-P7000CD,AVX-7000



⑤ No color with Composite signal

