

# AZ936

## 10 AMP LOW PROFILE POWER RELAY

### FEATURES

- High power switching (2000 VA)
- High sensitivity, 190 mW pickup
- Low profile (less than .25" height)
- SPST (1 Form A)
- DC coils up to 100 VDC
- UL file E44211, CSA file 720514
- TÜV file BL991234205002



### CONTACTS

<b>Arrangement</b>	SPST (1 Form A)
<b>Ratings</b>	<b>Resistive load:</b> Max. switched power: 240 W, 2000 VA Max. switched current: 10 A Max. switched voltage: 250 VAC/110 VDC
<b>Rated Load UL, CSA</b>	10 A at 125 VAC, resistive 8 A at 250/30 VDC, resistive 1/10 HP 125 VAC 1/10 HP 250 VAC
<b>TÜV</b>	10 A at 125 VAC, resistive 8 A at 250 VAC, 30 VDC, resistive
<b>Min. Load</b>	5 VDC, 0.1 A
<b>Material</b>	Silver tin oxide
<b>Resistance</b>	< 100 milliohms initially (6 V, 1 A voltage drop method)

### COIL

<b>Power At Pickup Voltage (typical)</b>	190 mW
<b>Max. Continuous Dissipation</b>	1.2 W at 20°C (68°F)
<b>Temperature Rise</b>	20°C (36°F) at nominal coil voltage
<b>Temperature</b>	Max. 115°C (239°F)

### NOTES

1. All values at 20°C (68°F).
2. Relay may pull in with less than "Must Operate" value.
3. Specifications subject to change without notice.

### GENERAL DATA

<b>Life Expectancy Mechanical Electrical</b>	Minimum operations 1 x 10 <sup>7</sup> 1 x 10 <sup>5</sup> at rated load
<b>Operate Time (typical)</b>	10 ms at nominal coil voltage
<b>Release Time (typical)</b>	2 ms at nominal coil voltage (with no coil suppression)
<b>Dielectric Strength (at sea level for 1 min.)</b>	1500 Vrms coil to contact 1000 Vrms contact to contact
<b>Insulation Resistance</b>	1000 megohms min. at 20°C, 500 VDC, 50% RH
<b>Dropout</b>	Greater than 5% of nominal coil voltage
<b>Ambient Temperature Operating Storage</b>	At nominal coil voltage -40°C (-40°F) to 70°C (158°F) -40°C (-42°F) to 115°C (239°F)
<b>Vibration</b>	0.062" DA at 10–55 Hz
<b>Shock</b>	10 g
<b>Enclosure</b>	P.B.T. polyester
<b>Terminals</b>	Tinned copper alloy, P.C.
<b>Max. Solder Temp.</b>	270°C (518°F)
<b>Max. Solder Time</b>	5 seconds
<b>Max. Solvent Temp.</b>	80°C (176°F)
<b>Max. Immersion Time</b>	30 seconds
<b>Weight</b>	5 grams

**ZETTLER** electronics

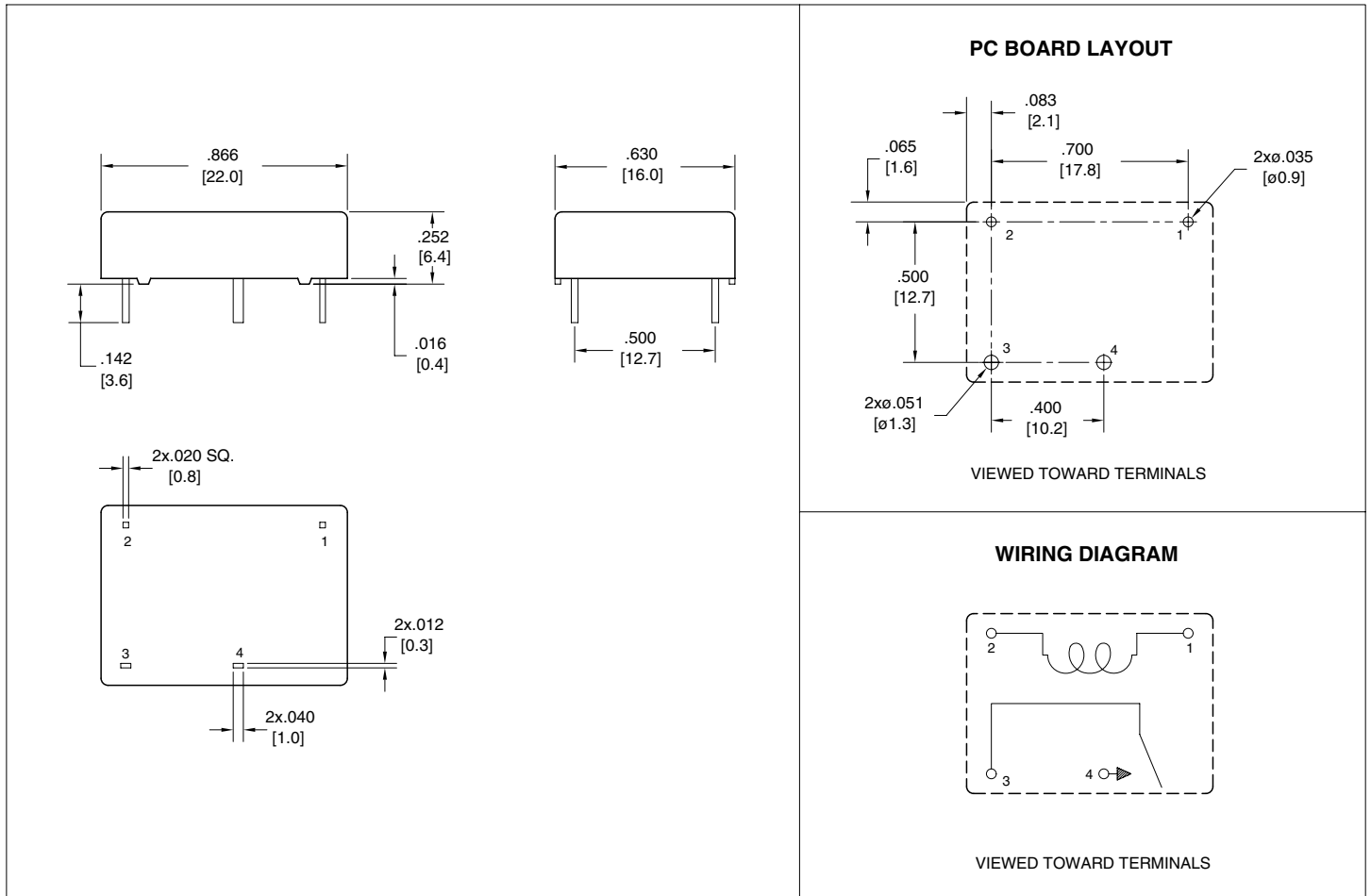
Logistic Design (UK) Limited. Unit 3, Eagle Centre Way, Luton LU4 9US www.zettlerrelay.com sales@zettlerrelay.com  
Telephone +44 (0) 1582 599 600 Fax +44 (0) 1582 599 700

# AZ936

## RELAY ORDERING DATA

COIL SPECIFICATIONS SPST-NO (1 Form A)				ORDER NUMBER	
Nominal Coil VDC	Must Operate VDC	Max. Continuous VDC	Coil Resistance $\pm 10\%$	Unsealed	Sealed
3	2.4	3.9	30	AZ936-1A-3D	AZ936-1A-3DE
5	4.0	6.5	83	AZ936-1A-5D	AZ936-1A-5DE
6	4.8	7.8	120	AZ936-1A-6D	AZ936-1A-6DE
9	7.2	11.7	270	AZ936-1A-9D	AZ936-1A-9DE
12	9.6	15.6	480	AZ936-1A-12D	AZ936-1A-12DE
24	19.2	31.2	1920	AZ936-1A-24D	AZ936-1A-24DE
48	33.6	52.8	4608	AZ936-1A-48D	AZ936-1A-48DE
100	70.0	110.0	20,000	AZ936-1A-100D	AZ936-1A-100DE

## MECHANICAL DATA



Dimensions in inches with metric equivalents in parentheses. Tolerance:  $\pm 0.010$ "

**ZETTLER** electronics

Logistic Design (UK) Limited. Unit 3, Eagle Centre Way, Luton LU4 9US [www.zettlerrelay.com](http://www.zettlerrelay.com) [sales@zettlerrelay.com](mailto:sales@zettlerrelay.com)  
Telephone +44 (0) 1582 599 600 Fax +44 (0) 1582 599 700

2000-04-21