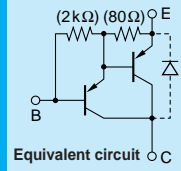


# Darlington

# 2SB1420



Silicon PNP Epitaxial Planar Transistor

Application : Chopper Regulator, DC Motor Driver and General Purpose

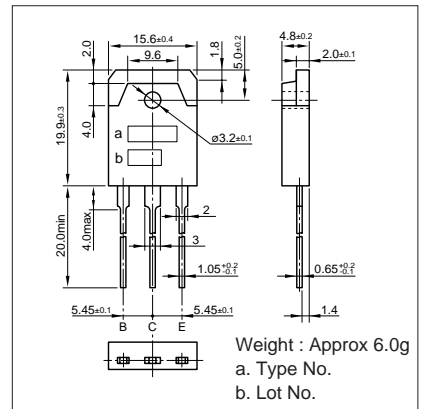
### Absolute maximum ratings (Ta=25°C)

Symbol	2SB1420	Unit
V <sub>CB0</sub>	-120	V
V <sub>CEO</sub>	-120	V
V <sub>EB0</sub>	-6	V
I <sub>C</sub>	-16(Pulse-26)	A
I <sub>B</sub>	-1	A
P <sub>C</sub>	80(T <sub>C</sub> =25°C)	W
T <sub>J</sub>	150	°C
T <sub>stg</sub>	-55 to +150	°C

### Electrical Characteristics (Ta=25°C)

Symbol	Conditions	2SB1420	Unit
I <sub>CB0</sub>	V <sub>CB</sub> =-120V	-10max	μA
I <sub>EB0</sub>	V <sub>EB</sub> =-6V	-10max	mA
V <sub>(BR)CEO</sub>	I <sub>C</sub> =-10mA	-120min	V
h <sub>FE</sub>	V <sub>CE</sub> =-4V, I <sub>C</sub> =-8A	2000min	
V <sub>CE(sat)</sub>	I <sub>C</sub> =-8A, I <sub>B</sub> =-16mA	-1.5max	V
V <sub>BE(sat)</sub>	I <sub>C</sub> =-8A, I <sub>B</sub> =-16mA	-2.5max	V
f <sub>T</sub>	V <sub>CE</sub> =-12V, I <sub>E</sub> =1A	50typ	MHz
COB	V <sub>CB</sub> =-10V, f=1MHz	350typ	pF

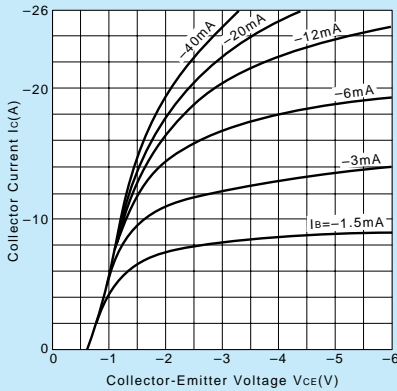
### External Dimensions MT-100(TO3P)



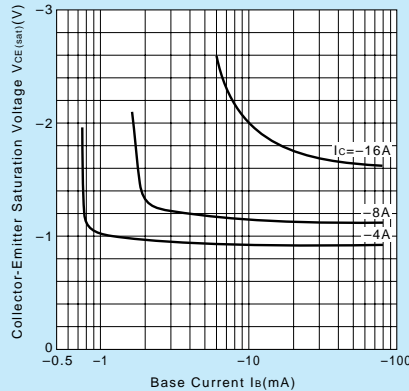
### Typical Switching Characteristics (Common Emitter)

V <sub>CC</sub> (V)	R <sub>L</sub> (Ω)	I <sub>C</sub> (A)	V <sub>BB1</sub> (V)	V <sub>BB2</sub> (V)	I <sub>B1</sub> (mA)	I <sub>B2</sub> (mA)	t <sub>on</sub> (μs)	t <sub>stg</sub> (μs)	t <sub>f</sub> (μs)
-24	2	-12	-10	5	-24	24	1.0typ	3.0typ	1.0typ

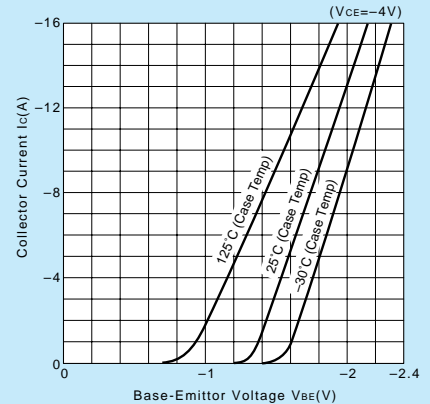
I<sub>C</sub>-V<sub>CE</sub> Characteristics (Typical)



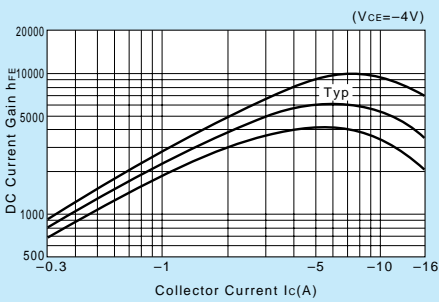
V<sub>CE(sat)</sub>-I<sub>B</sub> Characteristics (Typical)



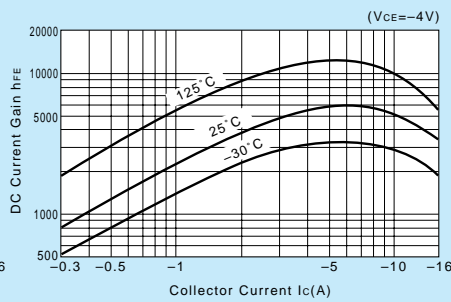
I<sub>C</sub>-V<sub>BE</sub> Temperature Characteristics (Typical)



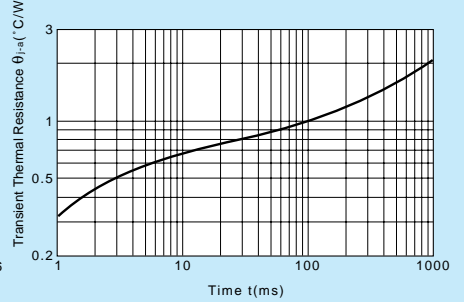
h<sub>FE</sub>-I<sub>C</sub> Characteristics (Typical)



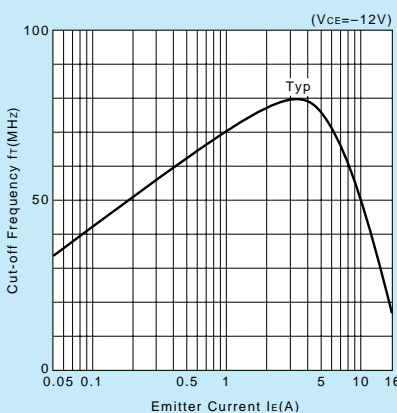
h<sub>FE</sub>-I<sub>C</sub> Temperature Characteristics (Typical)



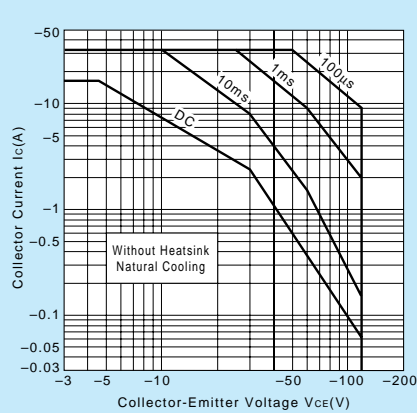
θ<sub>j-a</sub>-t Characteristics



f<sub>T</sub>-I<sub>E</sub> Characteristics (Typical)



Safe Operating Area (Single Pulse)



P<sub>C</sub>-T<sub>a</sub> Derating

