



# SAW Components

Data Sheet B3851





SAW Components

B3851

Low-Loss Filter for Mobile Communication

881,50 MHz

Preliminary Data



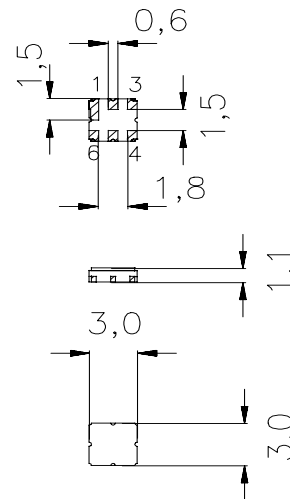
**Features**

- Low-loss RF filter for mobile telephone AMPS systems, receive path
- Usable passband 25 MHz
- No matching network required for operation at 50 Ω
- Ceramic package for **Surface Mounted Technology (SMT)**

**Terminals**

- Ni, gold-plated

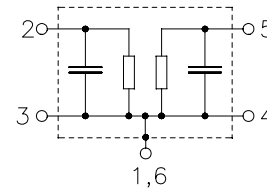
Ceramic package **DCC6C**



Dimensions in mm, approx. weight 0,037 g

**Pin configuration**

- 2 Input
- 5 Output
- 1,3,4,6 Ground



Type	Ordering code	Marking and Package according to	Packing according to
B3851	B39881-B3851-U410	C61157-A7-A67	F61074-V8088-Z000

Electrostatic Sensitive Device (ESD)

**Maximum ratings**

Operable temperature range	$T$	- 30 / + 85	°C	Source impedance 50 Ω
Storage temperature range	$T_{stg}$	- 40 / + 85	°C	
DC voltage	$V_{DC}$	5	V	
Input power max.	$P_{IN}$	5	dBm	



SAW Components

B3851

Low-Loss Filter for Mobile Communication

881,50 MHz

Preliminary Data



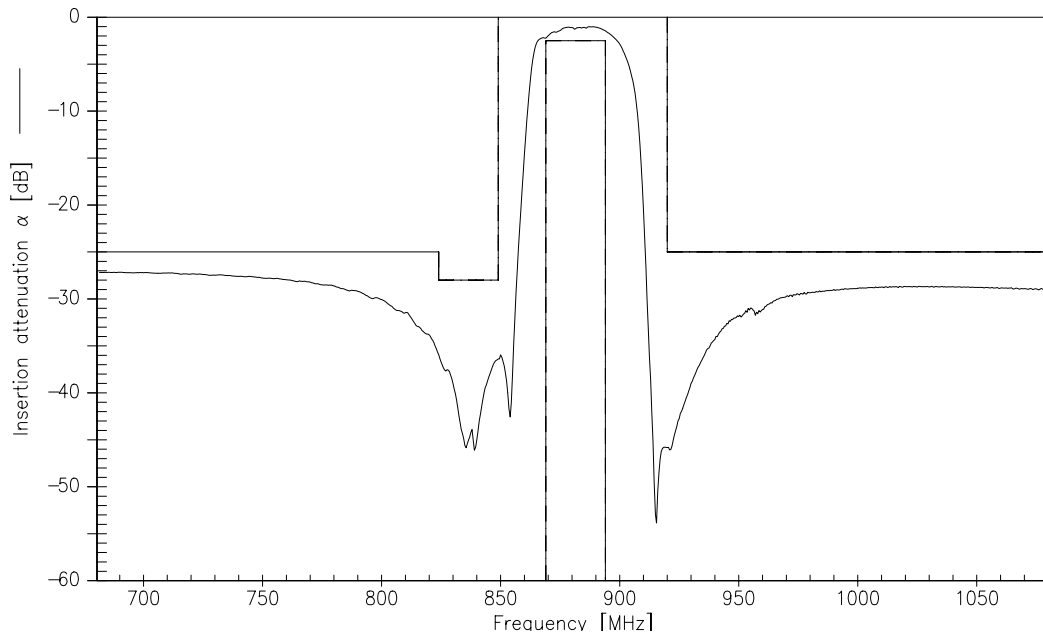
**Characteristics**

Operating temperature range:  $T = -30$  to  $+85^{\circ}\text{C}$   
 Terminating source impedance:  $Z_S = 50\ \Omega$   
 Terminating load impedance:  $Z_L = 50\ \Omega$

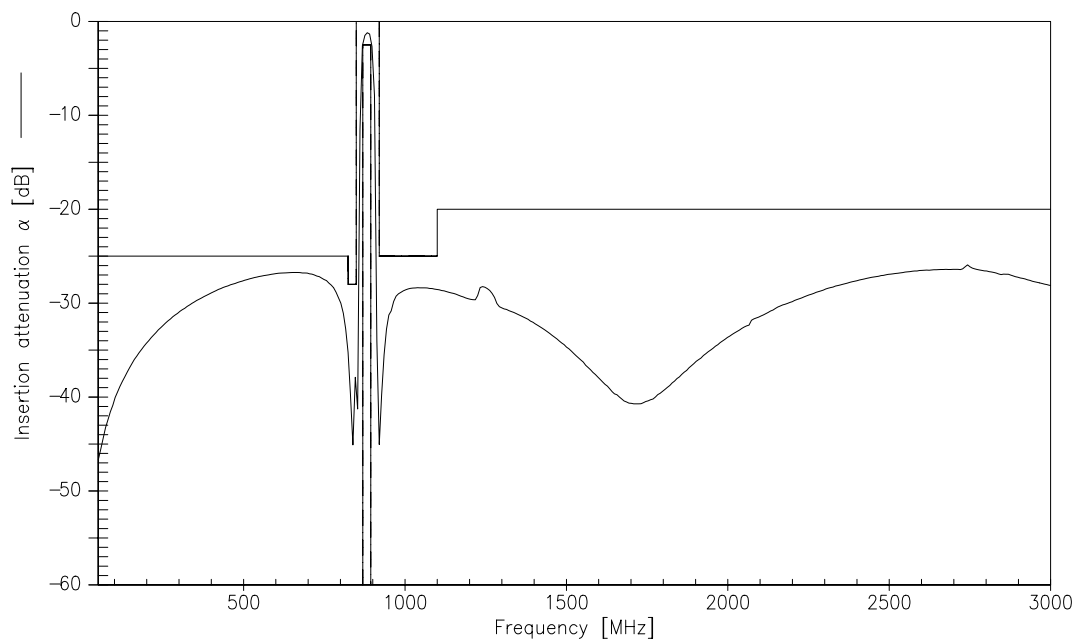
			min.	typ.	max.	
<b>Center frequency</b>	$f_c$		—	881,50	—	MHz
<b>Maximum insertion attenuation</b>	$\alpha_{\max}$	869,0 ... 894,0 MHz	—	2,4	2,5	dB
<b>Amplitude ripple (p-p)</b>	$\Delta\alpha$	869,0 ... 894,0 MHz	—	1,4	1,5	dB
<b>VSWR</b>		869,0 ... 894,0 MHz	—	1,7	1,9	
<b>Attenuation</b>	$\alpha$	0,0 ... 824,0 MHz	25,0	27,0	—	dB
		824,0 ... 849,0 MHz	28,0	35,0	—	dB
		920,0 ... 1100,0 MHz	25,0	29,0	—	dB
		1100,0 ... 3000,0 MHz	20,0	26,0	—	dB



Transfer function



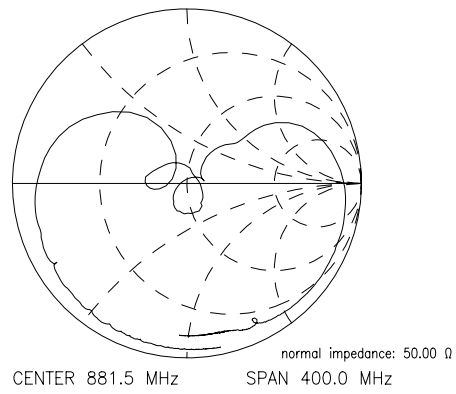
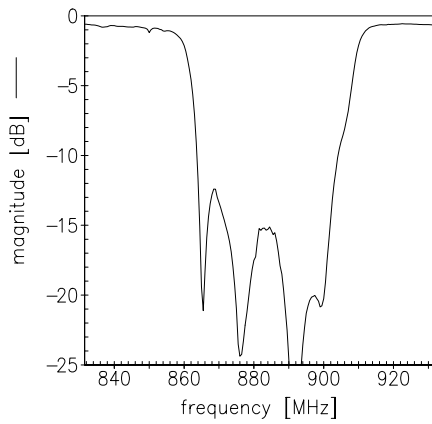
Transfer function (wideband)



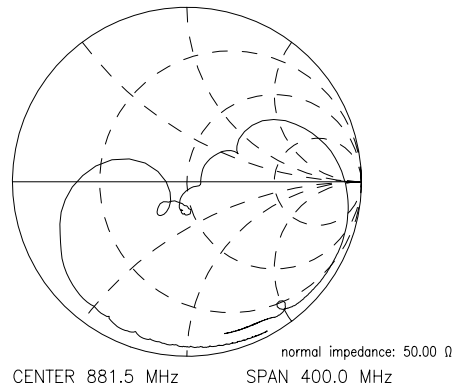
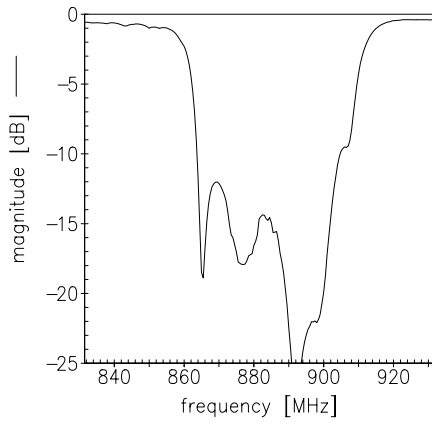


Reflection functions

$S_{11}$



$S_{22}$





**SAW Components**

**B3851**

**Low-Loss Filter for Mobile Communication**

**881,50 MHz**

Preliminary Data



**Published by EPCOS AG**

**Surface Acoustic Wave Components Division, SAW MC WT**

**P.O. Box 80 17 09, 81617 Munich, GERMANY**

© EPCOS AG 2002. Reproduction, publication and dissemination of this brochure and the information contained therein without EPCOS' prior express consent is prohibited.

Purchase orders are subject to the General Conditions for the Supply of Products and Services of the Electrical and Electronics Industry recommended by the ZVEI (German Electrical and Electronic Manufacturers' Association), unless otherwise agreed.

This brochure replaces the previous edition.

For questions on technology, prices and delivery please contact the Sales Offices of EPCOS AG or the international Representatives.

Due to technical requirements components may contain dangerous substances. For information on the type in question please also contact one of our Sales Offices.