



SAW Components

Data Sheet B3893





SAW Components

B3893

Low-Loss Filter

248,6 MHz

Data Sheet

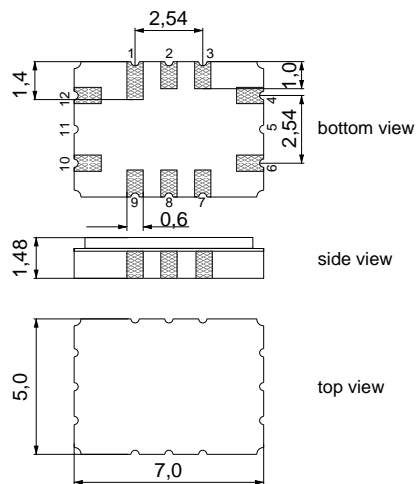
Ceramic package QCC12C

Features

- Low-loss IF filter for GSM-EDGE base station
- Clean-up Filter
- Ceramic SMD package

Terminals

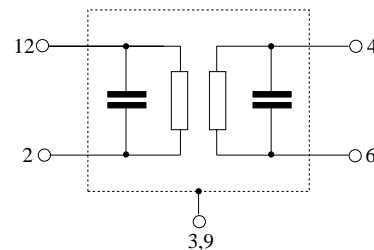
- Gold plated



Dimensions in mm, approx. weight 0,2 g

Pin configuration

- | | |
|-------------|-----------------|
| 12 | Input |
| 2 | Input ground |
| 4, 6 | balanced output |
| 1, 7, 8, 10 | to be grounded |
| 3, 9 | Case ground |



Type	Ordering code	Marking and Package according to	Packing according to
B3893	B39251-B3893-H310	C61157-A7-A95	F61074-V8170-Z000

Electrostatic Sensitive Device (ESD)

Maximum ratings

Operable temperature range	T	-30 / +80	°C	
Storage temperature range	T_{stg}	-40 / +85	°C	
DC voltage	V_{DC}	0	V	
Source power	P_s	10	dBm	
Source power	P_s	20	dBm	$t \leq 100$ hours



SAW Components

B3893

Low-Loss Filter

248,6 MHz

Data Sheet

Characteristics

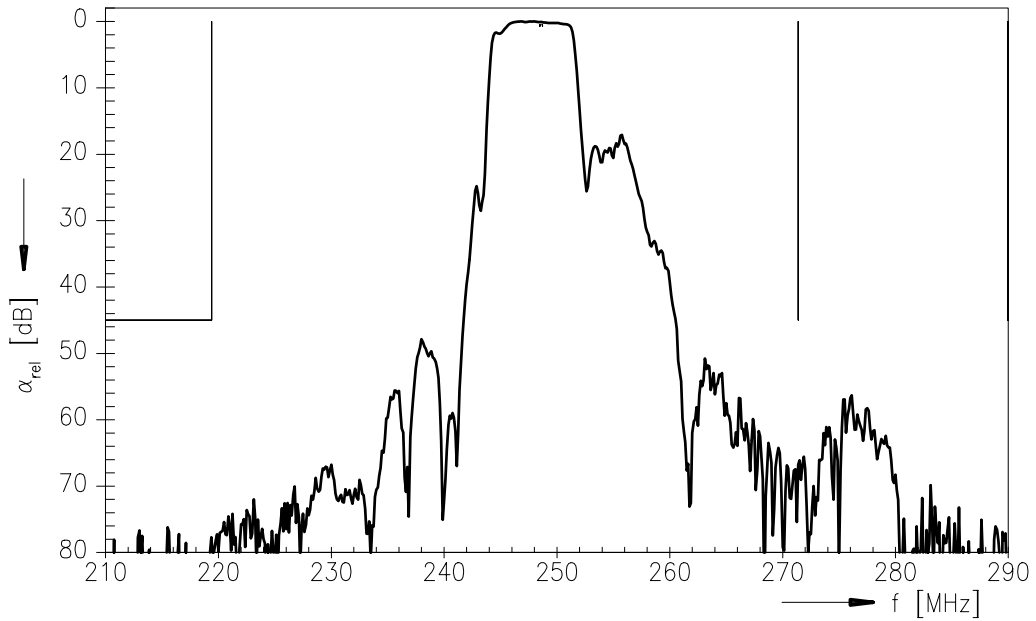
Operating temperature: $T = -20\text{ °C to }80\text{ °C}$
 Terminating source impedance: $Z_S = 50\ \Omega$
 Terminating load impedance: $Z_L = 200\ \Omega$

		min.	typ.	max.	
Nominal frequency	f_N	—	248,6	—	MHz
Minimum insertion attenuation (including losses in matching network)	α_{\min}	—	1,3	3,5	dB
Passband width					
	$\alpha_{\text{rel}} \leq 3,0\text{ dB}$	$B_{3,0\text{dB}}$	5,0	7,2	— MHz
Amplitude ripple (p-p)					
	$f_N \pm 120,0\text{ kHz}$	$\Delta\alpha$	—	0,2	0,5 dB
Group delay ripple (p-p)					
	$f_N \pm 120,0\text{ kHz}$	$\Delta\tau$	—	30	100 ns
Relative attenuation (relative to α_{\min})					
	10,0 MHz ... $f_N - 29,2\text{ MHz}$	α_{rel}	45	70	— dB
	@ $f_N + 22,80\text{ MHz}$		45	60	— dB
	@ $f_N + 52,00\text{ MHz}$		45	70	— dB
	@ $f_N + 74,80\text{ MHz}$		45	70	— dB
	@ $f_N + 104,0\text{ MHz}$		45	55	— dB
	@ $f_N + 126,8\text{ MHz}$		45	70	— dB
Temperature coefficient of frequency	TC_f	—	-36	—	ppm/K

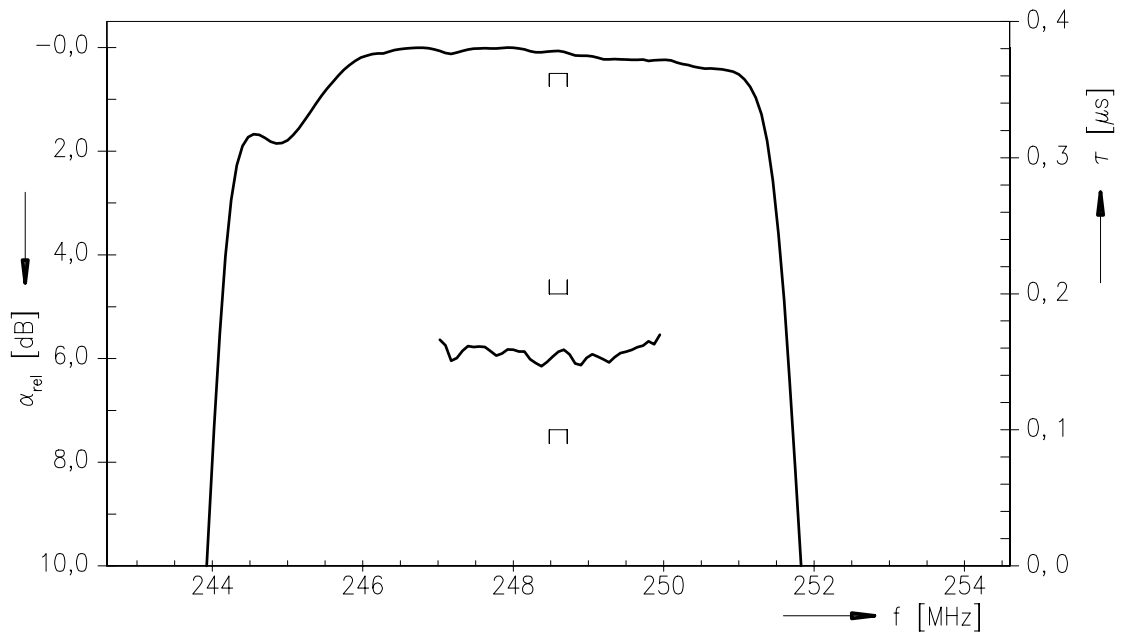


Data Sheet

Normalized transfer function:



Normalized transfer function (pass band):





SAW Components

B3893

Low-Loss Filter

248,6 MHz

Data Sheet

Published by EPCOS AG

Surface Acoustic Wave Components Division, SAW MC IS

P.O. Box 80 17 09, 81617 Munich, GERMANY

© EPCOS AG 2004. Reproduction, publication and dissemination of this brochure and the information contained therein without EPCOS' prior express consent is prohibited.

Purchase orders are subject to the General Conditions for the Supply of Products and Services of the Electrical and Electronics Industry recommended by the ZVEI (German Electrical and Electronic Manufacturers' Association), unless otherwise agreed.

This brochure replaces the previous edition.

For questions on technology, prices and delivery please contact the Sales Offices of EPCOS AG or the international Representatives.

Due to technical requirements components may contain dangerous substances. For information on the type in question please also contact one of our Sales Offices.