



# SAW Components

Data Sheet B9000





## SAW Components

B9000

## Low-Loss Filter for Mobile Communication

1575,42 MHz

Data Sheet



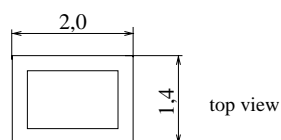
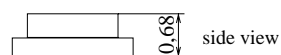
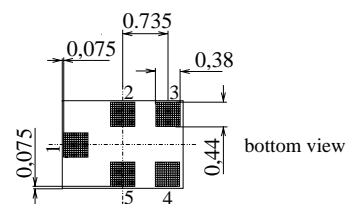
Chip sized SAW package

## Features

- Low-loss RF filter for GPS
- Low amplitude ripple
- No matching network required for operation at 50  $\Omega$
- Ceramic package for Surface Mounted Technology (SMT)

## Terminals

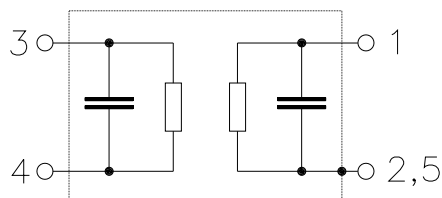
- Gold-plated Ni



Dimensions in mm, approx. weight 0,007 g

## Pin configuration

- |     |                    |
|-----|--------------------|
| 4   | Input, unbalanced  |
| 1   | Output, unbalanced |
| 2,5 | Case ground        |
| 3   | to be grounded     |



Type	Ordering code	Marking and Package according to	Packing according to
B9000	B39162-B9000-C710	C61157-A7-A82	F61074-V8151-Z000

Electrostatic Sensitive Device (ESD)

## Maximum ratings

Operating temperature range	$T$	- 40/+ 85	$^{\circ}\text{C}$	824...956, 1710...2170 MHz elsewhere
Storage temperature range	$T_{\text{stg}}$	- 40/+ 85	$^{\circ}\text{C}$	
DC voltage	$V_{\text{DC}}$	3	V	
Input Power max. (source impedance 50 $\Omega$ )	$P_{\text{IN}}$	25,0 10,0	dBm	



## SAW Components

B9000

## Low-Loss Filter for Mobile Communication

1575,42 MHz

## Data Sheet



## Characteristics

Operating Temperature Range:	$T$	= -40 °C to 85 °C
Terminating source impedance:	$Z_S$	= 50 $\Omega$
Terminating load impedance:	$Z_L$	= 50 $\Omega$

		min.	typ.	max.	
<b>Center frequency</b>	$f_C$	—	1575,42	—	MHz
<b>Maximum insertion attenuation</b>	$\alpha_{\max}$				
	1574,42 ... 1576,42 MHz*)	—	0,5	0,8	dB
	1574,42 ... 1576,42 MHz	—	0,5	0,9	dB
<b>Amplitude ripple</b>	$\Delta\alpha$				
	1574,42 ... 1576,42 MHz	—	0,0	0,3	dB
<b>Absolute attenuation</b>	$\alpha$				
	500,0MHz ... 894,0 MHz	16	18	—	dB
	894,0MHz ... 1500,0 MHz	15	17	—	dB
	1650,0MHz ... 4000,0 MHz	18	20	—	dB
	4000,0MHz ... 6000,0 MHz	15	20	—	dB
<b>VSWR</b>					
	1574,42MHz ... 1576,42MHz*)	—	1,1	1,5	
	1574,42MHz ... 1576,42 MHz	—	1,1	1,6	

\*)  $T_A = -30 \dots +70 \text{ }^\circ\text{C}$



SAW Components

B9000

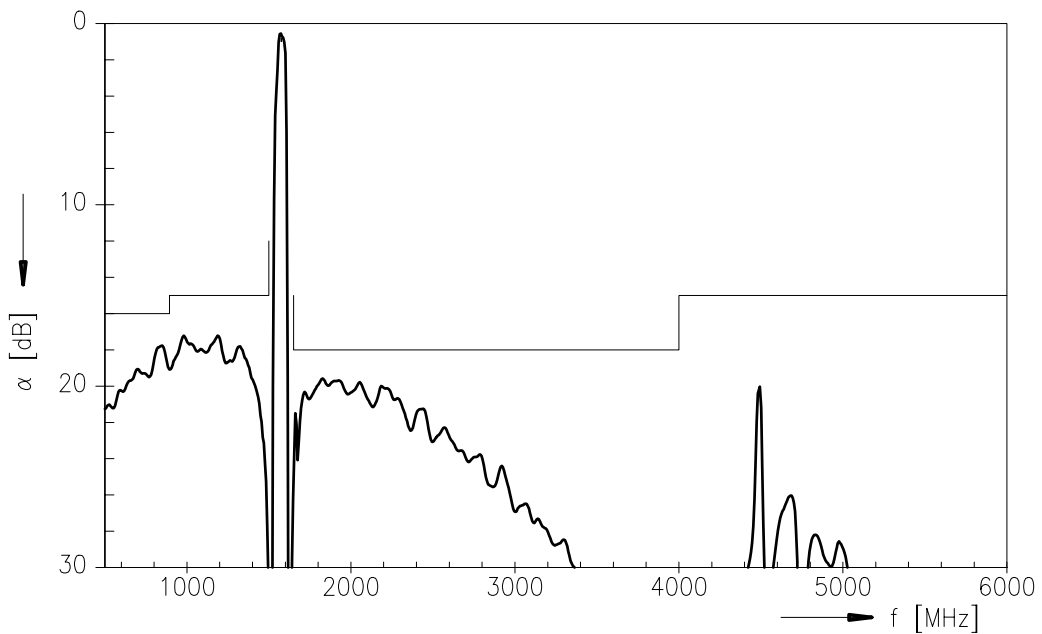
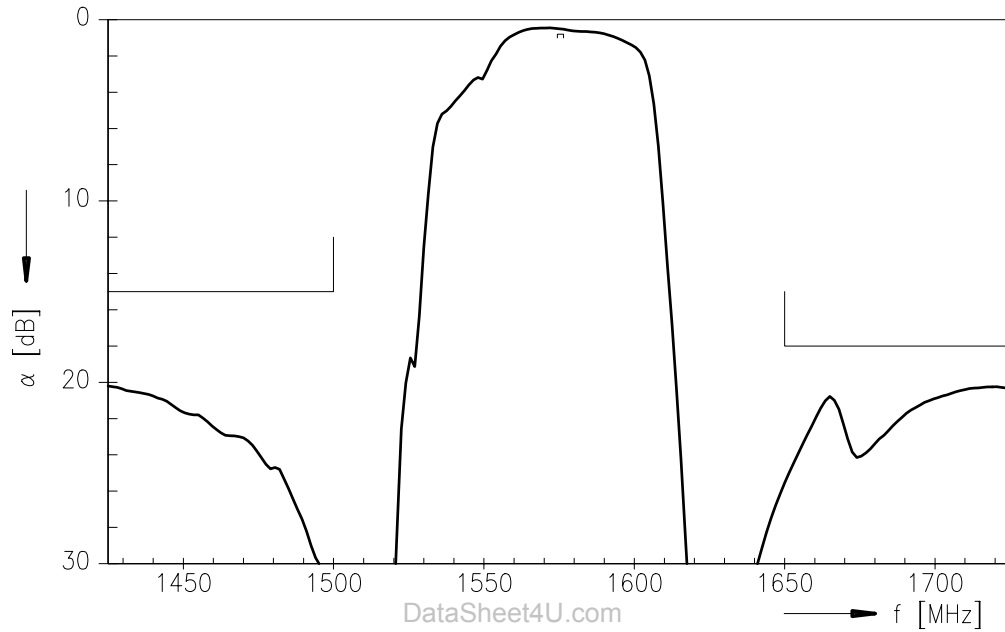
Low-Loss Filter for Mobile Communication

1575,42 MHz

Data Sheet



Transfer function



**SAW Components****B9000****Low-Loss Filter for Mobile Communication****1575,42 MHz**

Data Sheet

**Published by EPCOS AG****SAW MC WT, P.O. Box 80 17 09, 81617 Munich, GERMANY****TEL ++49 89 636 09, FAX ++49 89 636 2 26 89**

© EPCOS AG 2002. Reproduction, publication and dissemination of this brochure and the information contained therein without EPCOS' prior express consent is prohibited.

Purchase orders are subject to the General Conditions for the Supply of Products and Services of the Electrical and Electronics Industry recommended by the ZVEI (German Electrical and Electronic Manufacturers' Association), unless otherwise agreed.

This brochure replaces the previous edition.

For questions on technology, prices and delivery please contact the Sales Offices of EPCOS AG or the international Representatives.

Due to technical requirements components may contain dangerous substances. For information on the type in question please also contact one of our Sales Offices.