



SAW Components

Data Sheet B7806





SAW Components

B7806

Low-Loss Filter for Mobile Communication

1765,00 MHz

Data Sheet



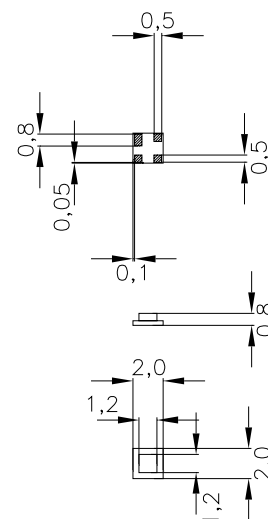
Chip sized SAW package

Features

- Low-loss RF filter for mobile telephone Korean PCS systems, transmit path
- Usable passband 30 MHz
- No matching network required for operation at 50 Ω
- Ceramic package for **Surface Mounted** technology (**SMT**)

Terminals

- Ni, gold-plated

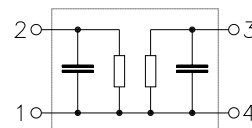


Dimensions in mm, approx. weight 0,01 g

Pin configuration

2	Input
1	Input - ground
3	Output
4	Output - ground

DataSheet4U.com



Type	Ordering code	Marking and Package according to	Packing according to
B7806	B39182-B7806-A510	C61157-A7-A63	F61074-V8099-Z000

Electrostatic Sensitive Device (ESD)

Maximum ratings

Operable temperature range	T	- 30/+ 85	$^{\circ}\text{C}$	CDMA signal
Storage temperature range	T_{stg}	- 40/+ 85	$^{\circ}\text{C}$	
DC voltage	V_{DC}	0	V	
Input power max.	P_{IN}	10	dBm	



SAW Components

B7806

Low-Loss Filter for Mobile Communication

1765,00 MHz

Data Sheet

**Characteristics**

Operating temperature range: $T = +25 \pm 2^\circ\text{C}$
 Terminating source impedance: $Z_S = 50 \Omega$
 Terminating load impedance: $Z_L = 50 \Omega$

				min.	typ.	max.	
Center frequency	f_c			—	1765,0	—	MHz
Maximum insertion attenuation	α_{\max}			—	2,7	3,0	dB
		1750,0 ... 1780,0	MHz				
Amplitude ripple (p-p)	$\Delta\alpha$			—	0,8	1,0	dB
		1750,0 ... 1780,0	MHz				
VSWR				—	1,9	2,0	
		1750,0 ... 1780,0	MHz				
Attenuation	α						
		1350,0 ... 1380,0	MHz	26,0	28,0	—	dB
		1660,0 ... 1690,0	MHz	22,0	23,0	—	dB
		1840,0 ... 1870,0	MHz (Rx)	30,0	34,0	—	dB
		2150,0 ... 2180,0	MHz	27,0	29,0	—	dB



SAW Components

B7806

Low-Loss Filter for Mobile Communication

1765,00 MHz

Data Sheet



Characteristics

Operating temperature range:	$T = -30$ to $+85^{\circ}\text{C}$
Terminating source impedance:	$Z_S = 50\ \Omega$
Terminating load impedance:	$Z_L = 50\ \Omega$

				min.	typ.	max.	
Center frequency	f_c			—	1765,0	—	MHz
Maximum insertion attenuation	α_{\max}			—	2,7	3,1	dB
		1750,0 ... 1780,0	MHz				
Amplitude ripple (p-p)	$\Delta\alpha$			—	0,8	1,1	dB
		1750,0 ... 1780,0	MHz				
VSWR				—	1,9	2,1	
		1750,0 ... 1780,0	MHz				
Attenuation	α						
		1350,0 ... 1380,0	MHz	26,0	28,0	—	dB
		1660,0 ... 1690,0	MHz	22,0	23,0	—	dB
		1840,0 ... 1870,0	MHz (Rx)	30,0	34,0	—	dB
		2150,0 ... 2180,0	MHz	27,0	29,0	—	dB

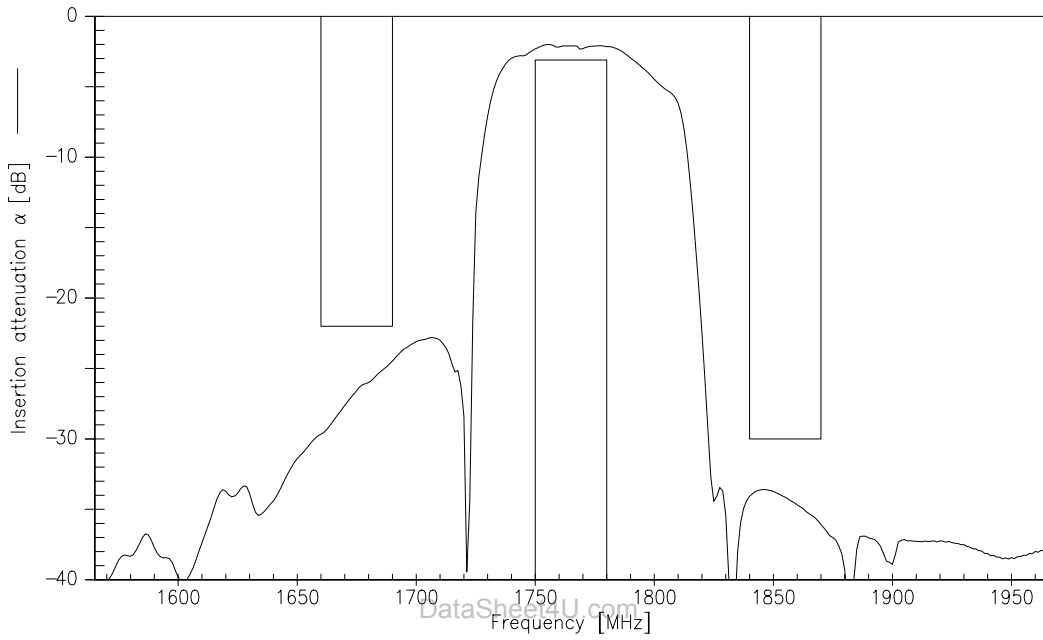


SAW Components **B7806**
Low-Loss Filter for Mobile Communication **1765,00 MHz**

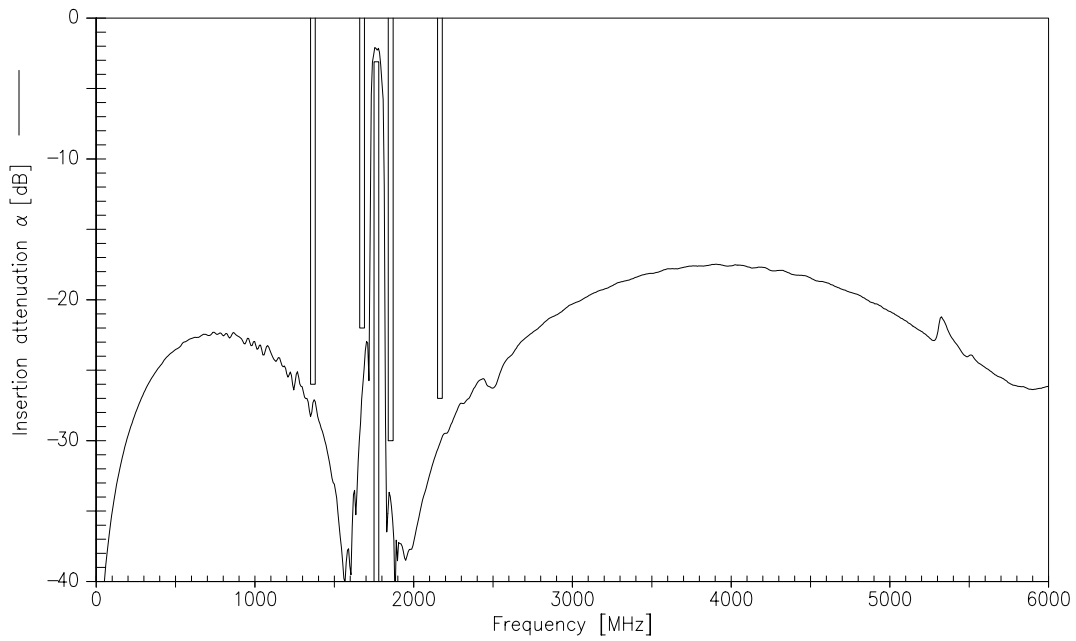
Data Sheet



Transfer function (25° C spec)



Transfer function (wideband)





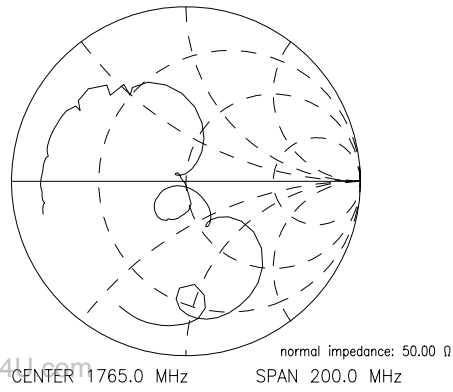
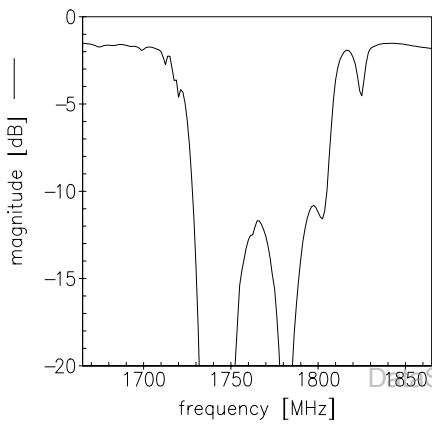
SAW Components **B7806**
Low-Loss Filter for Mobile Communication **1765,00 MHz**

Data Sheet

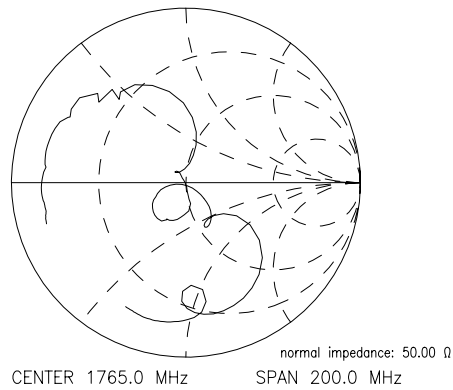
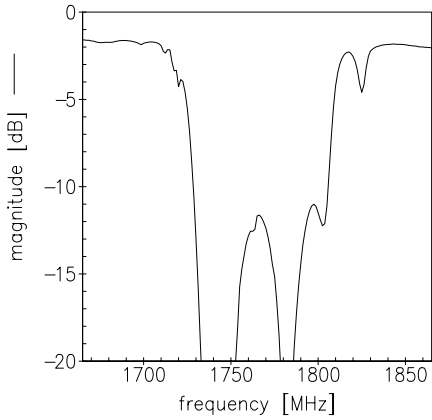


Reflection functions

S_{11}



S_{22}



**SAW Components****B7806****Low-Loss Filter for Mobile Communication****1765,00 MHz**

Data Sheet



et4U.com

DataSheet4U.com

Published by EPCOS AG**Surface Acoustic Wave Components Division, OFW E MF****P.O. Box 80 17 09, D-81617 München**

© EPCOS AG 1999. All Rights Reserved.

As far as patents or other rights of third parties are concerned, liability is only assumed for components per se, not for applications, processes and circuits implemented within components or assemblies.

The information describes the type of component and shall not be considered as assured characteristics.

Terms of delivery and rights to change design reserved.

For questions on technology, prices and delivery please contact the sales offices of EPCOS AG or the international representatives.

Due to technical requirements components may contain dangerous substances. For information on the type in question please also contact one of our sales offices.