



SAW Components

Data Sheet B4050





SAW Components

B4050

Low-Loss Filter for Automotive Telematics

1575,42 MHz

Data Sheet

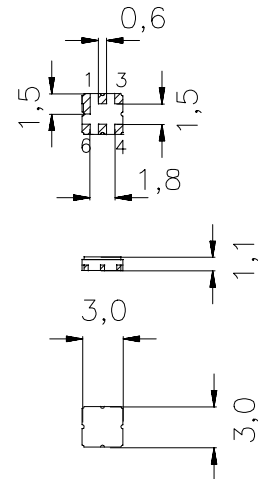
SMD ceramic package **DCC6D**

Features

- Low-loss RF filter for GPS application
- Usable passband 2,4 MHz
- Low insertion attenuation, low amplitude ripple
- Unbalanced to balanced operation
- Package for **Surface Mounted Technology (SMT)**
- Hermetically sealed ceramic package
- Compliant to EU RoHs Directive (2002/95/EC)
- Lead free soldering compatible with J - STD20C

Terminals

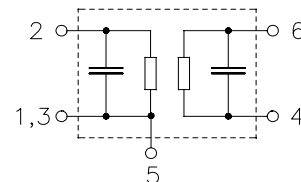
- Ni, gold-plated



Dimensions in mm, approx. weight 0,037 g

Pin configuration

- 2 Input, unbalanced
- 4, 6 Output, balanced
- 1, 3, 5 To be grounded
- 1, 3, 5 Case ground



Type	Ordering code	Marking and Package according to	Packing according to
B4050	B39162-B4050-U510	C61157-A7-A68	F61074-V8168-Z000

Electrostatic Sensitive Device (ESD)

Maximum ratings

Operable temperature range	T	- 40/ +105	°C	
Storage temperature range	T_{stg}	- 40/ +105	°C	
DC voltage	V_{DC}	0	V	
Source power	P_s	0	dBm	source impedance 50 Ω



SAW Components

B4050

Low-Loss Filter for Automotive Telematics

1575,42 MHz

Data Sheet

Characteristics

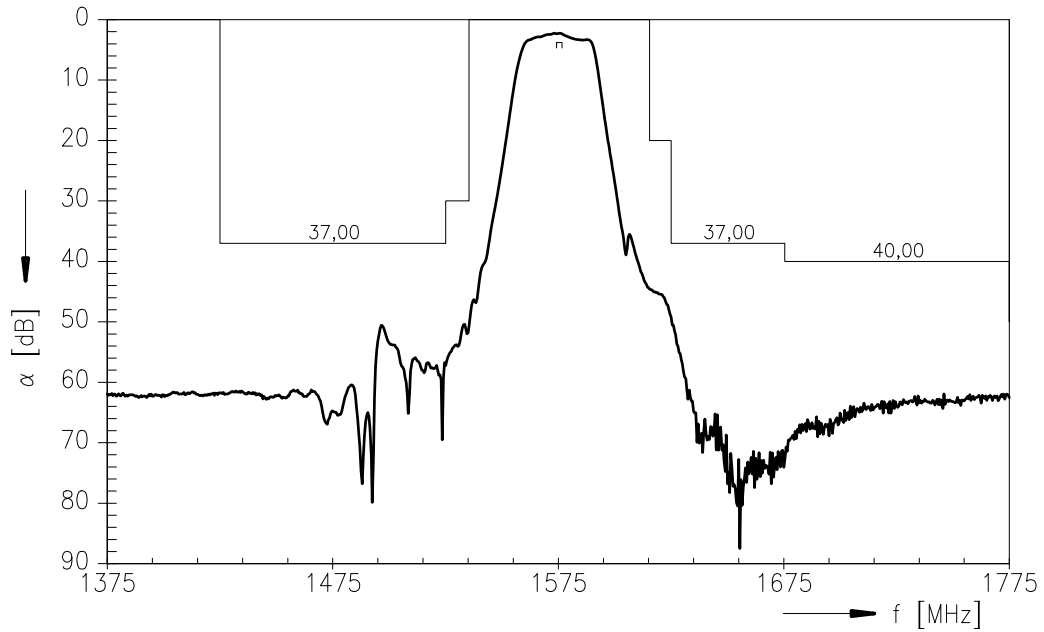
Operating temperature range: $T_A = -40^\circ\text{C} \dots +85^\circ\text{C}$
 Terminating source impedance: $Z_S = 50 \Omega$
 Terminating load impedance: $Z_L = 50 \Omega \text{ bal.}$

		min.	typ.	max.	
Nominal frequency	f_N	—	1575,42	—	MHz
Maximum insertion attenuation 1574,22 MHz ... 1576,62 MHz	α_{max}	—	3,3	3,8	dB
Amplitude ripple in passband (p-p) 1574,22 MHz ... 1576,62 MHz	$\Delta\alpha$	—	0,3	1,0	dB
Attenuation	α				
0,00 MHz ... 1250,00 MHz		50,0	60,0	—	dB
1425,00 MHz ... 1525,00 MHz		37,0	50,0	—	dB
1525,00 MHz ... 1535,42 MHz		30,0	44,0	—	dB
1615,42 MHz ... 1625,00 MHz		20,0	44,0	—	dB
1625,00 MHz ... 1675,00 MHz		37,0	46,0	—	dB
1675,00 MHz ... 1850,00 MHz		40,0	60,0	—	dB
1850,00 MHz ... 1910,00 MHz		50,0	60,0	—	dB
1910,00 MHz ... 2500,00 MHz		40,0	55,0	—	dB
2500,00 MHz ... 4000,00 MHz		20,0	52,0	—	dB

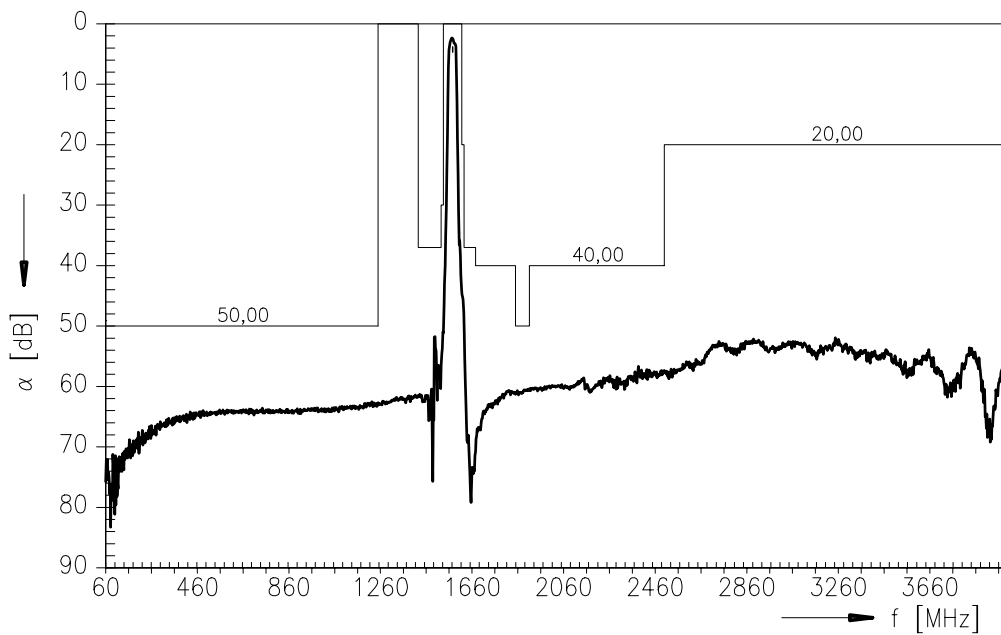


Data Sheet

Transfer function



Transfer function (pass band)





SAW Components

B4050

Low-Loss Filter for Automotive Telematics

1575,42 MHz

Data Sheet

Published by EPCOS AG

Surface Acoustic Wave Components Division, SAW CE AE

P.O. Box 80 17 09, 81617 Munich, GERMANY

©.EPCOS AG 2005. Reproduction, publication and dissemination of this brochure and the information contained therein without EPCOS' prior express consent is prohibited.

Purchase orders are subject to the General Conditions for the Supply of Products and Services of the Electrical and Electronics Industry recommended by the ZVEI (German Electrical and Electronic Manufacturers' Association), unless otherwise agreed.

This brochure replaces the previous edition.

For questions on technology, prices and delivery please contact the Sales Offices of EPCOS AG or the international Representatives.

Due to technical requirements components may contain dangerous substances. For information on the type in question please also contact one of our Sales Offices.