



# SAW Components

Preliminary Data Sheet B4057





**SAW Components**

**B4057**

**Low Loss Filter**

**1228.0 MHz**

Preliminary Data Sheet



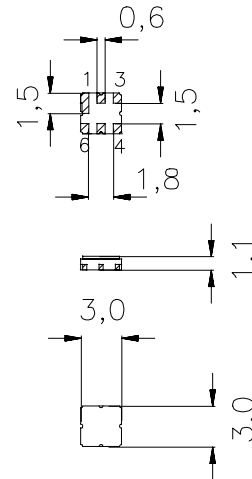
Ceramic package **DCC6D**

**Features**

- Low loss RF filter for GPS receivers
- Usable passband 20 MHz
- Low insertion attenuation, low amplitude ripple
- Unbalanced to balanced operation
- Ceramic package for **Surface Mounted Technology (SMT)**

**Terminals**

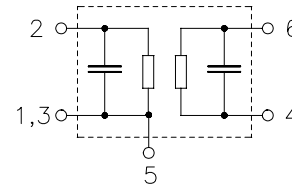
- Ni, gold-plated



Dimensions in mm, approx. weight 0,037 g

**Pin configuration**

- |         |                   |
|---------|-------------------|
| 2       | Input, unbalanced |
| 4, 6    | Output, balanced  |
| 1, 3, 5 | To be grounded    |
| 1, 3, 5 | Case ground       |



Type	Ordering code	Marking and Package according to	Packing according to
B4057	B39122-B4057-U510	C61157-A7-A68	F61074-V8089-Z000

**Electrostatic Sensitive Device (ESD)**

**Maximum ratings**

Operable temperature range	$T$	-40 / +85	°C	source impedance 50 $\Omega$
Storage temperature range	$T_{stg}$	-40 / +85	°C	
DC voltage	$V_{DC}$	0	V	
Source power	$P_S$	0	dBm	



SAW Components

B4057

Low Loss Filter

1228.0 MHz

Preliminary Data Sheet



**Characteristics**

Operating temperature range:  $T = -40\text{ °C to }+85\text{ °C}$   
 Terminating source impedance:  $Z_S = 50\ \Omega$   
 Terminating load impedance:  $Z_L = 50\ \Omega$  (balanced)

			min.	typ.	max.	
<b>Center frequency</b>	$f_c$		—	1228,0	—	MHz
<b>Maximum insertion attenuation</b>	$\alpha_{max}$	1218,0 ... 1238,0 MHz	—	3,0	3,5	dB
<b>Amplitude ripple (p-p)</b>	$\Delta\alpha$	1218,0 ... 1238,0 MHz	—	1,0	1,5	dB
<b>Absolute attenuation</b>	$\alpha$					
		0,0 ... 1088,0 MHz	35,0	53,0	—	dB
		1088,0 ... 1178,0 MHz	30,0	48,0	—	dB
		1178,0 ... 1193,0 MHz	11,0	30,0	—	dB
		1263,0 ... 1278,0 MHz	10,0	23,0	—	dB
		1278,0 ... 1368,0 MHz	28,0	31,0	—	dB
		1368,0 ... 1785,0 MHz	33,0	48,0	—	dB
		1785,0 ... 2500,0 MHz	27,0	48,0	—	dB
		2500,0 ... 4000,0 MHz	18,0	28,0	—	dB



SAW Components

B4057

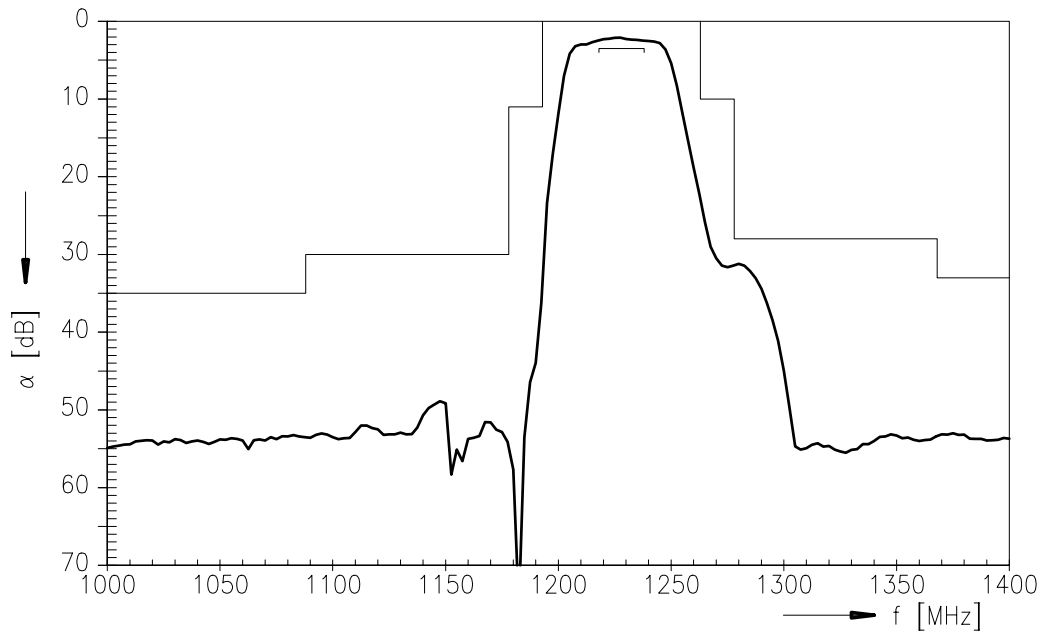
Low Loss Filter

1228.0 MHz

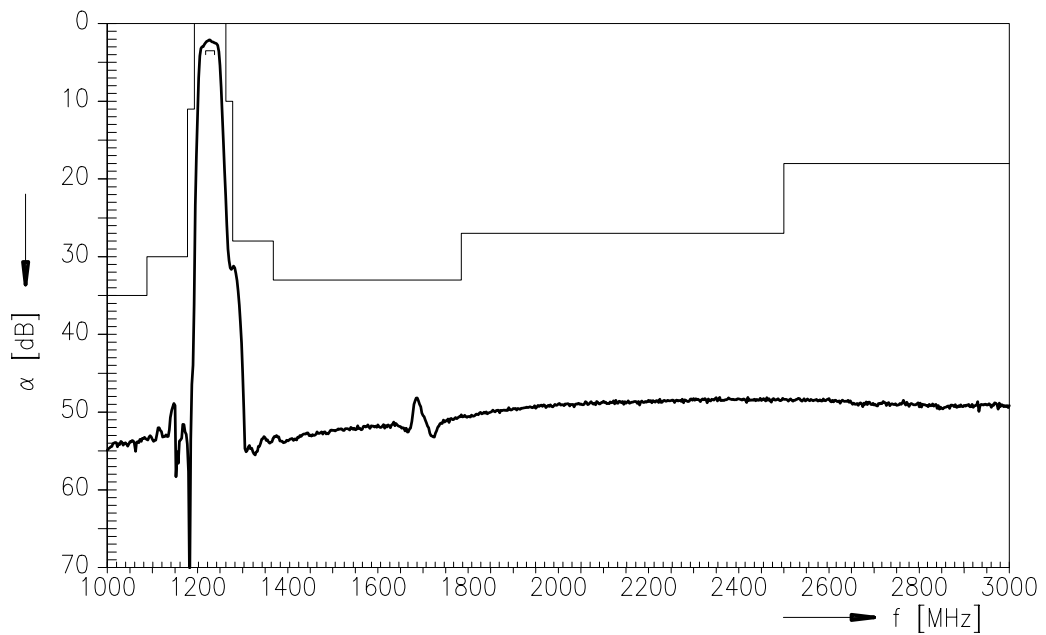
Preliminary Data Sheet



### Transfer function



### Transfer function (wide band)





**SAW Components**

**B4057**

**Low Loss Filter**

**1228.0 MHz**

PreliminaryData Sheet



**Published by EPCOS AG**

**Surface Acoustic Wave Components Division, SAW MC IS PD WL**

**P.O. Box 80 17 09, D-81617 München**

© EPCOS AG 2000. All Rights Reserved.

As far as patents or other rights of third parties are concerned, liability is only assumed for components per se, not for applications, processes and circuits implemented within components or assemblies.

The information describes the type of component and shall not be considered as assured characteristics.

Terms of delivery and rights to change design reserved.

For questions on technology, prices and delivery please contact the sales offices of EPCOS AG or the international representatives.

Due to technical requirements components may contain dangerous substances. For information on the type in question please also contact one of our sales offices.