



SAW Components

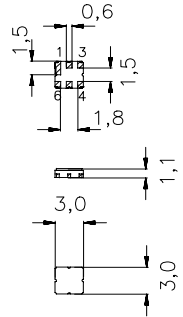
Data Sheet B4165

Data Sheet

A large, stylized, 3D-rendered graphic of the EPCOS logo. The letters "EPCOS" are rendered in a bold, white, sans-serif font, appearing to be part of a curved, metallic-looking structure. The background is dark and features a faint, glowing map of the world.

Features

- Low-loss RF filter for iDEN mobile telephone, receive path
- Low amplitude ripple
- No matching network required for operation at 50 Ω
- Ceramic Package for **Surface Mounted Technology (SMT)**

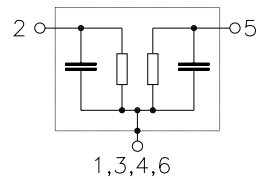
 Ceramic package **DCC6C**

Terminals

- Gold-plated Ni

Dimensions in mm, approx. weight 0,037g

Pin configuration

2	Input
5	Output
1, 3, 4, 6	Case ground



Type	Ordering code	Marking and Package according to	Packing according to
B4165	B39941-B4165-U410	C61157-A7-A67	F61074-V8088-Z000

Electrostatic Sensitive Device (ESD)
Maximum ratings

Operable temperature range	T	- 30 / + 70	$^{\circ}\text{C}$	source impedance 50 Ω continuous wave
Storage temperature range	T_{stg}	- 40 / + 85	$^{\circ}\text{C}$	
DC voltage	V_{DC}	0	V	
Input power max.	P_{IN}	0	dBm	



Characteristics

Operating temperature range:	$T = 25 \pm 2^\circ \text{C}$
Terminating source impedance:	$Z_S = 50 \Omega$
Terminating load impedance:	$Z_L = 50 \Omega$

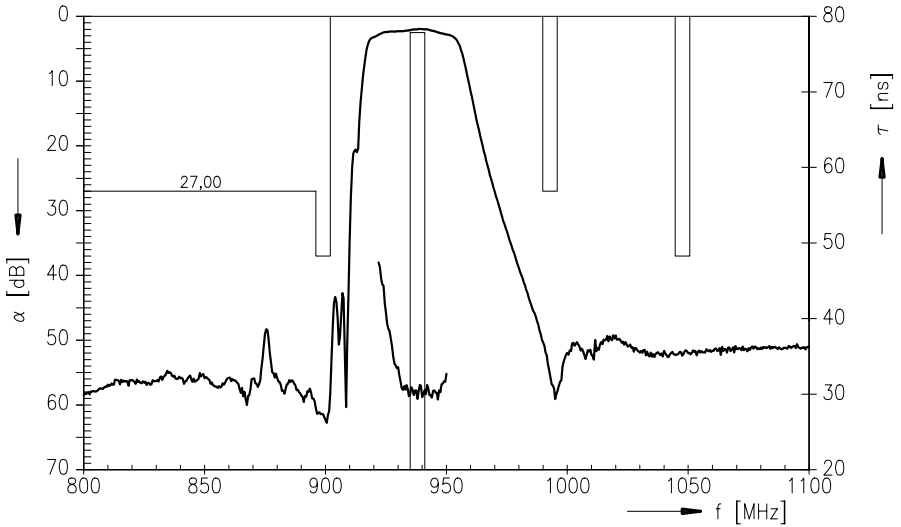
		min.	typ.	max.	
Center frequency	f_c	—	938,0	—	MHz
Maximum insertion attenuation	α_{\max}				
	935,000 ... 941,000 MHz	—	2,1	2,5	dB
Amplitude ripple (p-p)	$\Delta\alpha$				
	935,000 ... 941,000 MHz	—	0,2	1,0	dB
Group delay ripple (p-p)	$\Delta\tau$				
	935,000 ... 941,000 MHz	—	3	10	ns
Attenuation	α_{\min}				
	0,000 ... 896,000 MHz	27	47	—	dB
	896,000 ... 902,000 MHz	37	55	—	dB
	989,825 ... 995,825 MHz	27	52	—	dB
	1044,650 ... 1050,650 MHz	37	52	—	dB
	1154,300 ... 1160,300 MHz	47	50	—	dB
	1160,300 ... 3200,000 MHz	27	35	—	dB
Input and output return loss					
	935,000 ... 941,000 MHz	12	14	—	dB


Characteristics

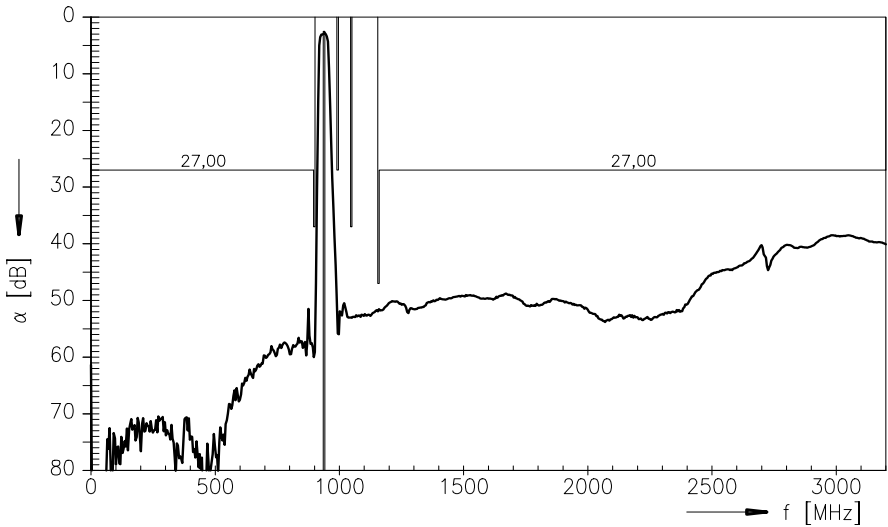
Operating temperature range:	$T = -30 \text{ to } +70^\circ \text{C}$
Terminating source impedance:	$Z_S = 50 \Omega$
Terminating load impedance:	$Z_L = 50 \Omega$

		min.	typ.	max.	
Center frequency	f_c	—	938,0	—	MHz
Maximum insertion attenuation	α_{\max}				
935,000 ... 941,000 MHz		—	2,5	3,0	dB
Amplitude ripple (p-p)	$\Delta\alpha$				
935,000 ... 941,000 MHz		—	0,5	1,0	dB
Group delay ripple (p-p)	$\Delta\tau$				
935,000 ... 941,000 MHz		—	3	10	ns
Attenuation	α_{\min}				
0,000 ... 896,000 MHz		27	47	—	dB
896,000 ... 902,000 MHz		37	48	—	dB
989,825 ... 995,825 MHz		27	50	—	dB
1044,650 ... 1050,650 MHz		37	51	—	dB
1154,300 ... 1160,300 MHz		47	50	—	dB
1160,300 ... 3200,000 MHz		27	35	—	dB
Input and output return loss					
935,000 ... 941,000 MHz		12	14	—	dB

Transfer function (25+/-2 °C)



Transfer function (wideband)





Published by EPCOS AG

Surface Acoustic Wave Components Division, SAW MC WT

P.O. Box 80 17 09, D-81617 München

© EPCOS AG 1999. All Rights Reserved.

As far as patents or other rights of third parties are concerned, liability is only assumed for components per se, not for applications, processes and circuits implemented within components or assemblies.

The information describes the type of component and shall not be considered as assured characteristics.

Terms of delivery and rights to change design reserved.

For questions on technology, prices and delivery please contact the sales offices of EPCOS AG or the international representatives.

Due to technical requirements components may contain dangerous substances. For information on the type in question please also contact one of our sales offices.