



SAW Components

Data Sheet B4221





SAW Components

B4221

Low-Loss Dual Band Filter for Mobile Communication

942,5 / 1842,5 MHz

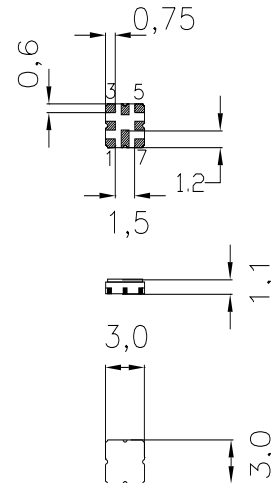
Preliminary Data



Ceramic package **QCC8D**

Features

- Low-loss RF filter for mobile telephone EGSM and PCN system , receive path
- Usable passband:
Filter 1 (EGSM): 35 MHz
Filter 2 (PCN): 75 MHz
- Suitable for GPRS class 1 to 12
- Ceramic package for **Surface Mounted Technology (SMT)**



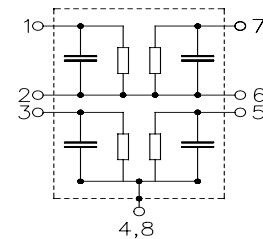
Dimensions in mm, approx. weight 0,037 g

Terminals

- Ni, gold-plated

Pin configuration

- | | |
|------|---------------------|
| 1 | Input [Filter 1] |
| 3 | Input [Filter 2] |
| 5 | Output [Filter 2] |
| 7 | Output [Filter 1] |
| 2, 6 | to be grounded |
| 4, 8 | Case ground |



Type	Ordering code	Marking and Package according to	Packing according to
B4221	B39182-B4221-U810	C61157-A7-A72	F61074-V8101-Z000

Electrostatic Sensitive Device (ESD)

Maximum ratings

Operable temperature range	T	- 20 / + 70	°C	
Storage temperature range	T_{stg}	- 40 / + 85	°C	
DC voltage	V_{DC}	3	V	
Input power max.	P_{IN}			
EGSM:		15	dBm	
PCN:		12	dBm	



Characteristics Filter 1 (EGSM)

Operating temperature range: $T = 25 \pm 2^{\circ}\text{C}$
 Terminating source impedance: $Z_S = 50 \Omega$
 Terminating load impedance: $Z_L = 50 \Omega$

			min.	typ.	max.	
Center frequency	f_c		—	942,50	—	MHz
Maximum insertion attenuation	α_{max}	925,0 ... 960,0 MHz	—	3,2	3,5	dB
Amplitude ripple (p-p)	$\Delta\alpha$	925,0 ... 960,0 MHz	—	1,4	1,9	dB
Input VSWR		925,0 ... 960,0 MHz	—	1,7	2,1	
Output VSWR		925,0 ... 960,0 MHz	—	1,7	2,1	
Attenuation	α_{min}	0,0 ... 700,0 MHz	40	45	—	dB
		700,0 ... 880,0 MHz	35	39	—	dB
		880,0 ... 905,0 MHz	31	36	—	dB
		905,0 ... 915,0 MHz	15	20	—	dB
		980,0 ... 982,0 MHz	20	27	—	dB
		982,0 ... 1005,0 MHz	25	29	—	dB
		1005,0 ... 1035,0 MHz	35	43	—	dB
		1035,0 ... 1300,0 MHz	33	37	—	dB
		1300,0 ... 1360,0 MHz	32	35	—	dB
		1360,0 ... 2500,0 MHz	28	32	—	dB
		2500,0 ... 3120,0 MHz	15	22	—	dB
		3120,0 ... 3700,0 MHz	8	11	—	dB
		3700,0 ... 6000,0 MHz	6	8	—	dB
Input reflection coefficient @ 1842,5 Mhz	Phase		-130	-120	-110	°



Characteristics Filter 1 (EGSM)

Operating temperature range: $T = -20$ to $+70^{\circ}\text{C}$
 Terminating source impedance: $Z_S = 50\ \Omega$
 Terminating load impedance: $Z_L = 50\ \Omega$

			min.	typ.	max.	
Center frequency	f_c		—	942,50	—	MHz
Maximum insertion attenuation	α_{\max}	925,0 ... 960,0 MHz	—	3,4	3,9	dB
Amplitude ripple (p-p)	$\Delta\alpha$	925,0 ... 960,0 MHz	—	1,6	2,0	dB
Input VSWR		925,0 ... 960,0 MHz	—	1,8	2,2	
Output VSWR		925,0 ... 960,0 MHz	—	1,8	2,2	
Attenuation	α_{\min}					
		0,0 ... 700,0 MHz	40	45	—	dB
		700,0 ... 880,0 MHz	35	39	—	dB
		880,0 ... 905,0 MHz	31	36	—	dB
		905,0 ... 915,0 MHz	15	20	—	dB
		980,0 ... 982,0 MHz	20	27	—	dB
		982,0 ... 1005,0 MHz	25	29	—	dB
		1005,0 ... 1035,0 MHz	35	43	—	dB
		1035,0 ... 1300,0 MHz	33	37	—	dB
		1300,0 ... 1360,0 MHz	32	35	—	dB
		1360,0 ... 2500,0 MHz	28	32	—	dB
		2500,0 ... 3120,0 MHz	15	22	—	dB
		3120,0 ... 3700,0 MHz	8	11	—	dB
		3700,0 ... 6000,0 MHz	6	8	—	dB
Input reflection coefficient @ 1842,5 MHz						
	Phase		-130	-120	-110	$^{\circ}$



Characteristics Filter 2 (PCN)

Operating temperature range: $T = 25 \pm 2^\circ\text{C}$

Terminating source impedance: $Z_S = 50 \Omega$

Terminating load impedance: $Z_L = 50 \Omega$

			min.	typ.	max.	
Center frequency	f_c		—	1842,5	—	MHz
Maximum insertion attenuation	α_{\max}					
	1805,0 ... 1815,0	MHz	—	3,0	3,5	dB
	1815,0 ... 1870,0	MHz	—	2,5	3,3	dB
	1870,0 ... 1880,0	MHz	—	3,0	3,5	dB
Amplitude ripple (p-p)	$\Delta\alpha$					
	1805,0 ... 1880,0	MHz	—	1,5	1,9	dB
Input VSWR						
	1805,0 ... 1880,0	MHz	—	1,8	2,1	
Output VSWR						
	1805,0 ... 1880,0	MHz	—	1,8	2,1	
Attenuation	α_{\min}					
	0,0 ... 1480,0	MHz	37	40	—	dB
	1480,0 ... 1710,0	MHz	25	35	—	dB
	1710,0 ... 1765,0	MHz	16	24	—	dB
	1765,0 ... 1785,0	MHz	11	19	—	dB
	1907,0 ... 1914,0	MHz	11	22	—	dB
	1914,0 ... 1980,0	MHz	16	23	—	dB
	1980,0 ... 3000,0	MHz	22	26	—	dB
	3000,0 ... 3400,0	MHz	20	29	—	dB
	3400,0 ... 4000,0	MHz	18	24	—	dB
	4000,0 ... 5000,0	MHz	12	19	—	dB
	5000,0 ... 6000,0	MHz	8	12	—	dB
Input reflection coefficient @ 947,5 MHz						
	Phase		-150	-140	-130	°



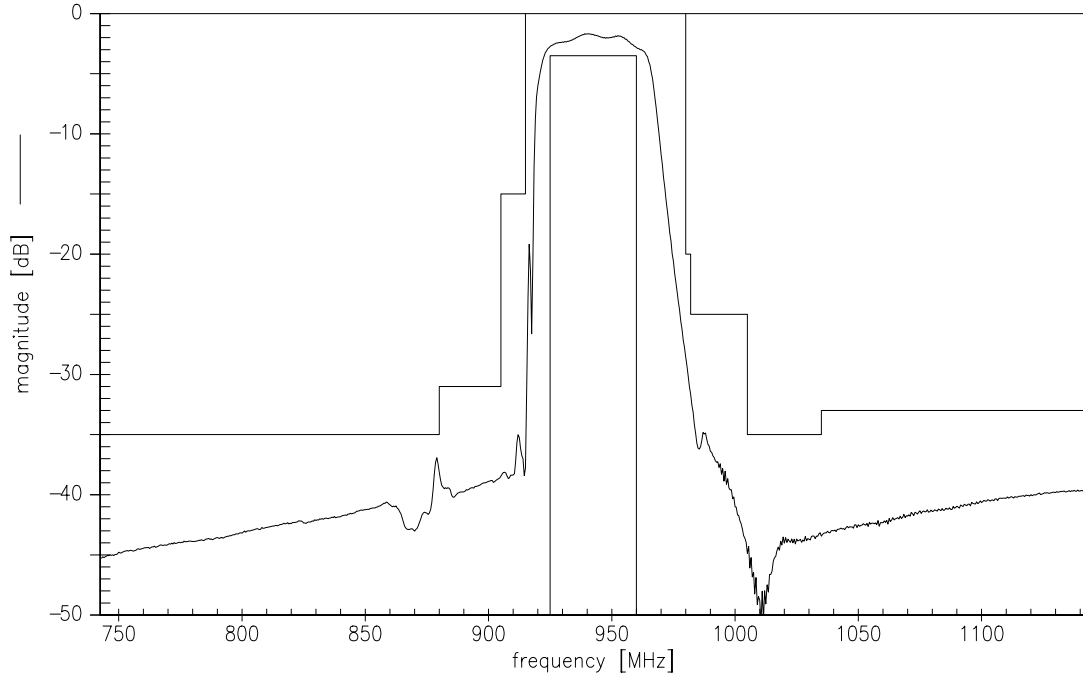
Characteristics Filter 2 (PCN)

Operating temperature range: $T = -20$ to $+70^{\circ}\text{C}$
 Terminating source impedance: $Z_S = 50\ \Omega$
 Terminating load impedance: $Z_L = 50\ \Omega$

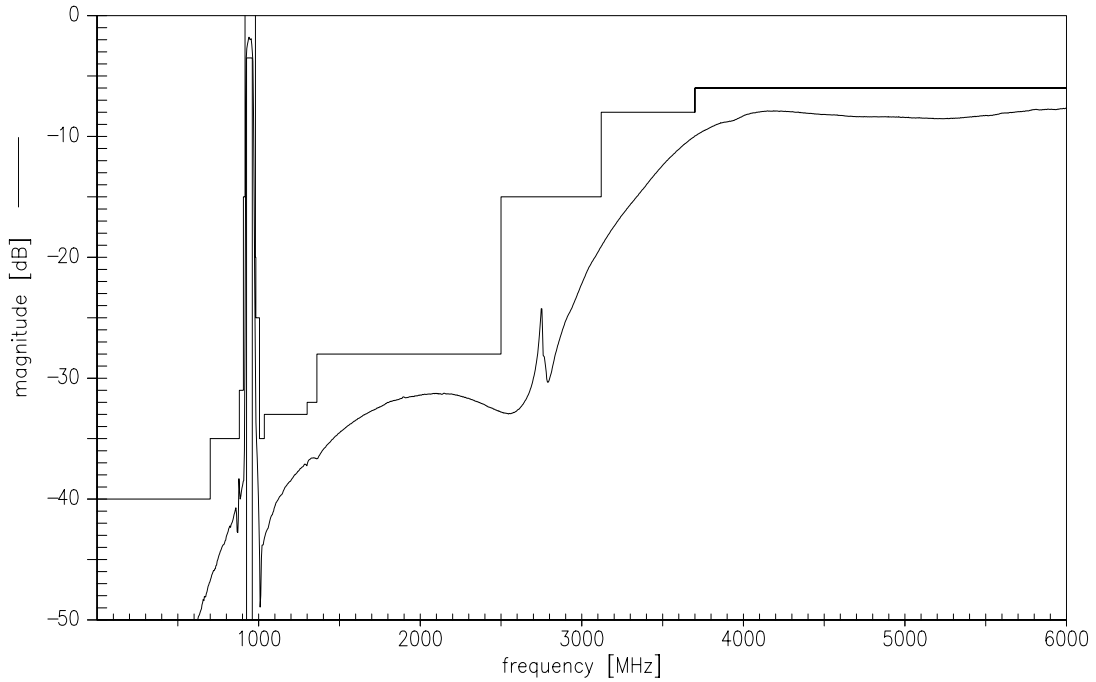
				min.	typ.	max.	
Center frequency	f_c			—	1842,5	—	MHz
Maximum insertion attenuation	α_{\max}						
		1805,0 ... 1815,0	MHz	—	3,3	3,9	dB
		1815,0 ... 1870,0	MHz	—	2,6	3,3	dB
		1870,0 ... 1880,0	MHz	—	3,3	3,9	dB
Amplitude ripple (p-p)	$\Delta\alpha$						
		1805,0 ... 1880,0	MHz	—	1,6	2,0	dB
Input VSWR							
		1805,0 ... 1880,0	MHz	—	1,9	2,2	
Output VSWR							
		1805,0 ... 1880,0	MHz	—	1,9	2,2	
Attenuation	α_{\min}						
		0,0 ... 1480,0	MHz	37	40	—	dB
		1480,0 ... 1710,0	MHz	25	35	—	dB
		1710,0 ... 1765,0	MHz	15	24	—	dB
		1765,0 ... 1785,0	MHz	10	19	—	dB
		1907,0 ... 1914,0	MHz	10	22	—	dB
		1914,0 ... 1980,0	MHz	15	23	—	dB
		1980,0 ... 3000,0	MHz	22	26	—	dB
		3000,0 ... 3400,0	MHz	20	29	—	dB
		3400,0 ... 4000,0	MHz	18	24	—	dB
		4000,0 ... 5000,0	MHz	12	19	—	dB
		5000,0 ... 6000,0	MHz	8	12	—	dB
Input reflection coefficient @ 947,5 MHz							
	Phase			-150	-140	-130	$^{\circ}$



Transfer function Filter 1 (EGSM)- spec at 25 °C

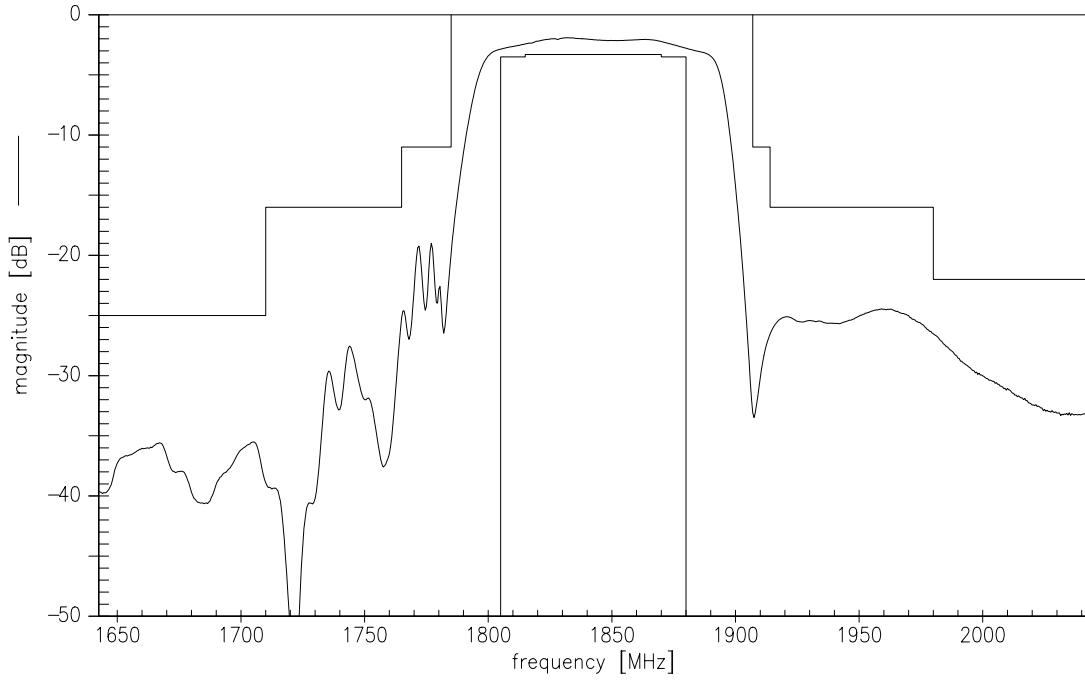


Transfer function Filter 1 (EGSM) - wideband

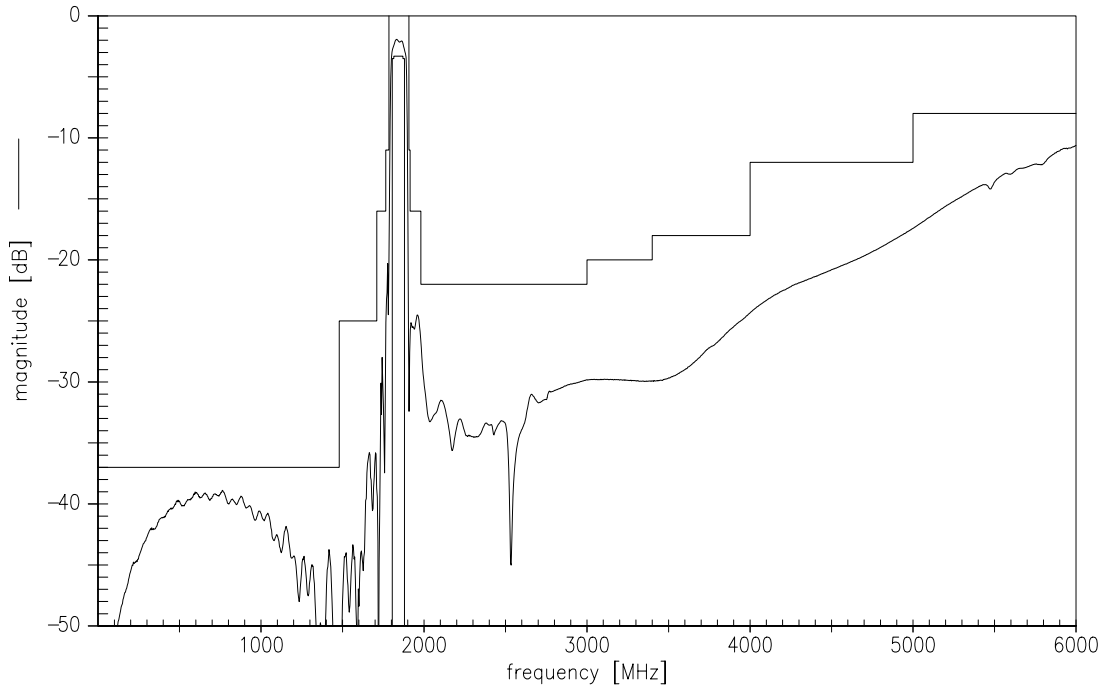




Transfer function Filter 2 (PCN) - spec at 25 °C



Transfer function Filter 2 (PCN) - wideband





SAW Components

B4221

Low-Loss Dual Band Filter for Mobile Communication

942,5 / 1842,5 MHz

Preliminary Data



Published by EPCOS AG

Surface Acoustic Wave Components Division, SAW MC WT

P.O. Box 80 17 09, D-81617 München

© EPCOS AG 2002. All Rights Reserved. Reproduction, publication and dissemination of this brochure and the information contained therein without EPCOS' prior express consent is prohibited.

The information contained in this brochure describes the type of component and shall not be considered as guaranteed characteristics. Purchase orders are subject to the General Conditions for the Supply of Products and Services of the Electrical and Electronics Industry recommended by the ZVEI (German Electrical and Electronic Manufacturers' Association), unless otherwise agreed.

This brochure replaces the previous edition.

For questions on technology, prices and delivery please contact the Sales Offices of EPCOS AG or the international Representatives.

Due to technical requirements components may contain dangerous substances. For information on the type in question please also contact one of our Sales Offices.