



SAW Components

Data Sheet B4235





SAW Components

B4235

Low-Loss Dual Band Filter for Mobile Communication

942,5/1842,5 MHz

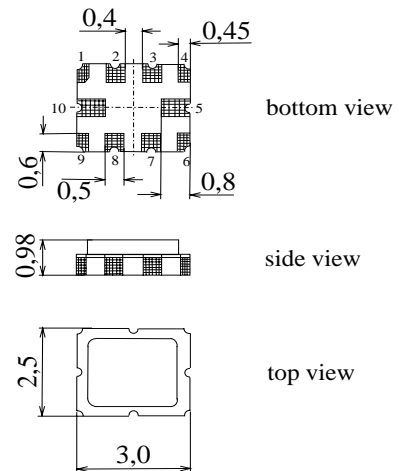
Data Sheet



Ceramic package **QCC10G**

Features

- Low-loss RF filter for mobile telephone GSM 900/1800 system , receive path
- Usable passband:
Filter 1 (GSM900): 35 MHz
Filter 2 (GSM1800): 75 MHz
- Unbalanced to balanced operation of both filters
- Impedance transformation from 50 Ω to 150 Ω for both filters
- Suitable for GPRS class 1 to 12
- Ceramic package for **Surface Mounted Technology (SMT)**
- RoHS compliant



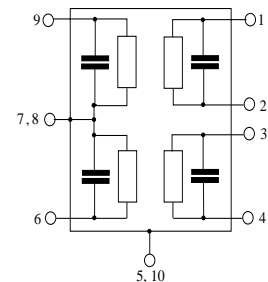
Terminals

- Ni, gold-plated

Dimensions in mm, approx. weight **27 mg**

Pin configuration

- 1, 2 Output, balanced [Filter 1]
- 3, 4 Output, balanced [Filter 2]
- 6 Input [Filter 2]
- 7,8 Case ground
- 9 Input [Filter 1]
- 5, 10 Case ground



Type	Ordering code	Marking and Package according to	Packing according to
B4235	B39182-B4235-H910	C61157-A7-A142	F61074-V8174-Z000

Electrostatic Sensitive Device (ESD)

Maximum ratings

Operable temperature range	T	- 40 / + 85	°C	
Storage temperature range	T_{stg}	- 40 / +85	°C	
DC voltage	V_{DC}	5	V	
ESD voltage	V_{ESD}^*	50	V	Machine Model, 10 pulses
Input power at Tx bands:				
GSM850, GSM900	P_{IN}	15	dBm	peak power of GSM signal, duty cycle 4:8
GSM1800, GSM1900				

* - acc. to JESD22-A115A (Machine Model), 10 negative & 10 positive pulses



Characteristics Filter 1 (GSM900)

Operating temperature range: $T = +25 \pm 2 \text{ }^\circ\text{C}$
 Terminating source impedance: $Z_S = 50 \text{ } \Omega$ (unbalanced)
 Terminating load impedance: $Z_L = 150 \text{ } \Omega$ (balanced) || 68 nH

			min.	typ.	max.	
Center frequency	f_c		—	942,5	—	MHz
Maximum insertion attenuation	α_{max}	925,0 ... 960,0 MHz	—	1,8	2,2	dB
Amplitude ripple (p-p)	$\Delta\alpha$	925,0 ... 960,0 MHz	—	0,6	1,2	dB
Input VSWR		925,0 ... 960,0 MHz	—	1,9	2,1	
Output VSWR		925,0 ... 960,0 MHz	—	1,9	2,1	
Output amplitude balance (S_{31}/S_{21})		925,0 ... 960,0 MHz	-2,0	—	2,0	dB
Output phase balance ($\phi(S_{31})-\phi(S_{21})+180^\circ$)		925,0 ... 960,0 MHz	-10,0	—	10,0	degree
Absolute attenuation	α_{abs}	10,0 ... 480,0 MHz	45,0	53,0	—	dB
		480,0 ... 880,0 MHz	30,0	38,0	—	dB
		880,0 ... 905,0 MHz	24,0	27,0	—	dB
		905,0 ... 915,0 MHz	20,0	25,0	—	dB
		980,0 ... 1050,0 MHz	23,0	30,0	—	dB
		1050,0 ... 3500,0 MHz	30,0	34,0	—	dB
		3500,0 ... 4500,0 MHz	22,0	26,0	—	dB
		4500,0 ... 6000,0 MHz	15,0	17,0	—	dB



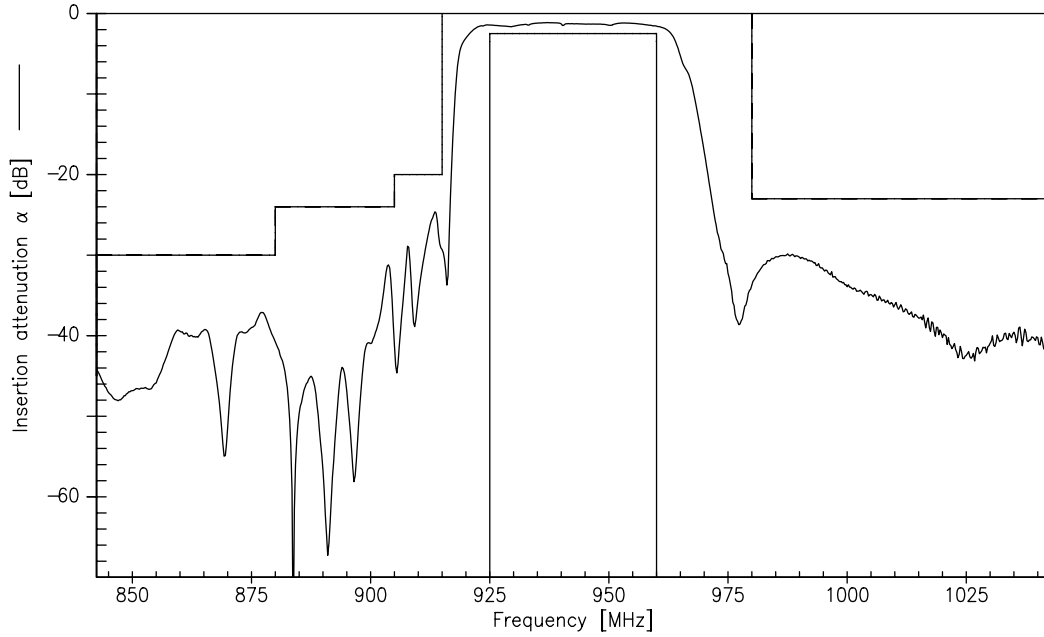
Characteristics Filter 1 (GSM900)

Operating temperature range: $T = -20$ to $+75^{\circ}\text{C}$
 Terminating source impedance: $Z_S = 50\ \Omega$ (unbalanced)
 Terminating load impedance: $Z_L = 150\ \Omega$ (balanced) || 68 nH

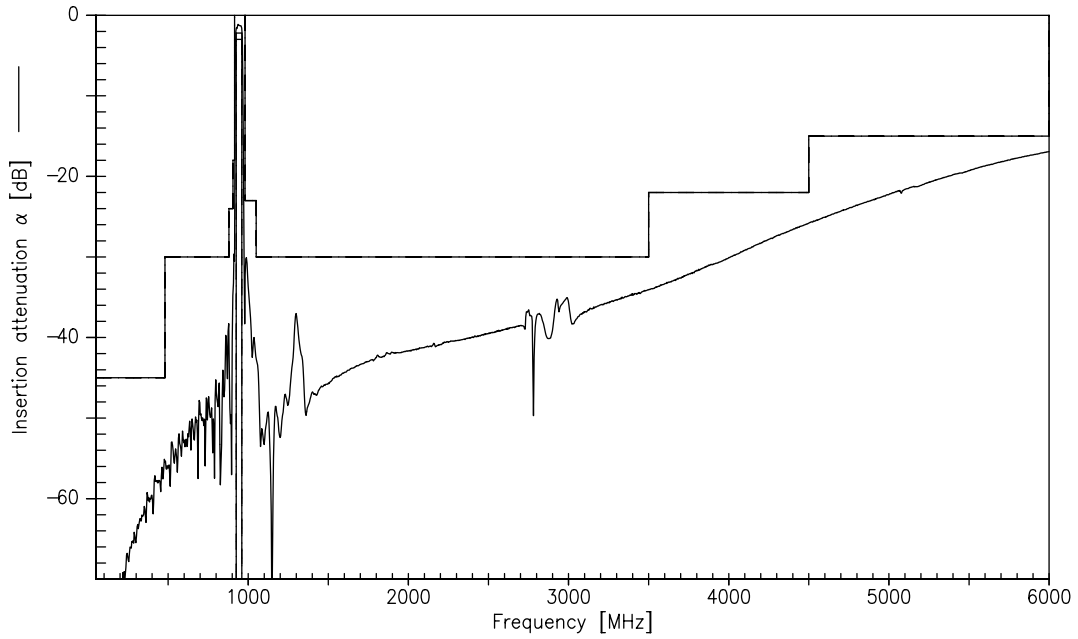
			min.	typ.	max.	
Center frequency	f_c		—	942,5	—	MHz
Maximum insertion attenuation	α_{\max}	925,0 ... 960,0 MHz	—	1,8	2,5	dB
Amplitude ripple (p-p)	$\Delta\alpha$	925,0 ... 960,0 MHz	—	0,9	1,5	dB
Input VSWR		925,0 ... 960,0 MHz	—	1,9	2,1	
Output VSWR		925,0 ... 960,0 MHz	—	1,9	2,1	
Output amplitude balance (S_{31}/S_{21})		925,0 ... 960,0 MHz	-2,5	—	2,5	dB
Output phase balance ($\phi(S_{31})-\phi(S_{21})+180^{\circ}$)		925,0 ... 960,0 MHz	-12,0	—	12,0	degree
Absolute attenuation	α_{abs}					
		10,0 ... 480,0 MHz	45,0	50,0	—	dB
		480,0 ... 880,0 MHz	30,0	38,0	—	dB
		880,0 ... 905,0 MHz	24,0	27,0	—	dB
		905,0 ... 915,0 MHz	11,0	18,0	—	dB
		980,0 ... 1050,0 MHz	23,0	30,0	—	dB
		1050,0 ... 3500,0 MHz	30,0	34,0	—	dB
		3500,0 ... 4500,0 MHz	22,0	26,0	—	dB
		4500,0 ... 6000,0 MHz	15,0	17,0	—	dB



Transfer function of filter 1 (Narrow Band)



Transfer function of filter 1 (Wide Band)





Characteristics Filter 2 (GSM1800)

Operating temperature range: $T = +25 \pm 2 \text{ }^\circ\text{C}$
 Terminating source impedance: $Z_S = 50 \text{ } \Omega$ (unbalanced)
 Terminating load impedance: $Z_L = 150 \text{ } \Omega$ (balanced) || 12.0 nH

			min.	typ.	max.	
Center frequency	f_c		—	1842,5	—	MHz
Maximum insertion attenuation	α_{\max}	1805,0 ... 1880,0 MHz	—	2,4	2,7	dB
Amplitude ripple (p-p)	$\Delta\alpha$	1805,0 ... 1880,0 MHz	—	1,2	1,5	dB
Input VSWR		1805,0 ... 1880,0 MHz	—	2,4	2,6	
Output VSWR		1805,0 ... 1880,0 MHz	—	2,2	2,4	
Output amplitude balance (S_{31}/S_{21})		1805,0 ... 1880,0 MHz	-1,5	—	1,5	dB
Output phase balance ($\phi(S_{31})-\phi(S_{21})+180^\circ$)		1805,0 ... 1880,0 MHz	-10,0	—	10,0	degree
Absolute attenuation	α_{abs}					
		10,0 ... 1000,0 MHz	40,0	50,0	—	dB
		1000,0 ... 1705,0 MHz	26,0	28,0	—	dB
		1705,0 ... 1785,0 MHz	13,0	17,0	—	dB
		1920,0 ... 1980,0 MHz	15,0	24,0	—	dB
		1980,0 ... 2030,0 MHz	24,0	28,0	—	dB
		2030,0 ... 5000,0 MHz	30,0	34,0	—	dB
		5000,0 ... 6000,0 MHz	25,0	30,0	—	dB



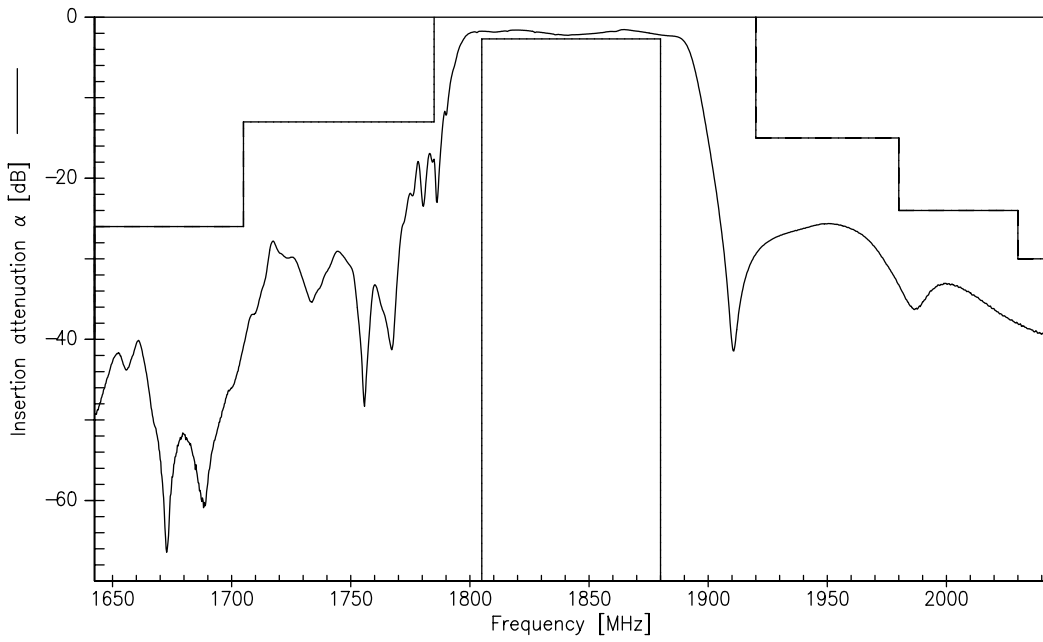
Characteristics Filter 2 (GSM1800)

Operating temperature range: $T = -20$ to $+75^{\circ}\text{C}$
 Terminating source impedance: $Z_S = 50\ \Omega$ (unbalanced)
 Terminating load impedance: $Z_L = 150\ \Omega$ (balanced) || 12.0 nH

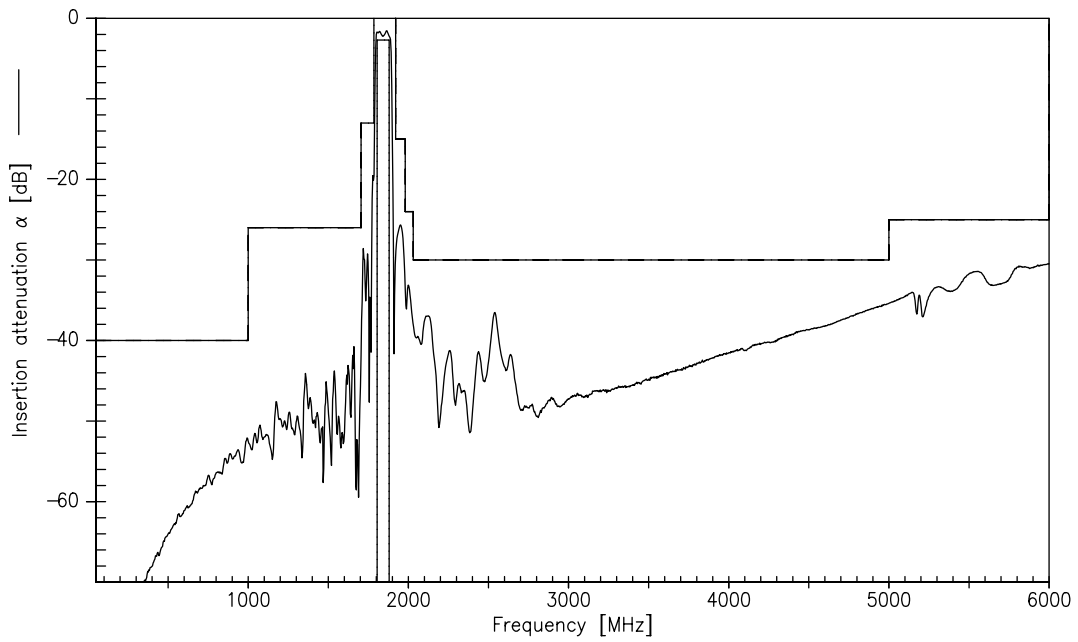
			min.	typ.	max.	
Center frequency	f_c		—	1842,5	—	MHz
Maximum insertion attenuation	α_{\max}	1805,0 ... 1880,0 MHz	—	2,4	2,7	dB
Amplitude ripple (p-p)	$\Delta\alpha$	1805,0 ... 1880,0 MHz	—	1,5	1,8	dB
Input VSWR		1805,0 ... 1880,0 MHz	—	2,4	2,6	
Output VSWR		1805,0 ... 1880,0 MHz	—	2,2	2,4	
Output amplitude balance (S_{31}/S_{21})		1805,0 ... 1880,0 MHz	-1,5	—	1,5	dB
Output phase balance ($\phi(S_{31})-\phi(S_{21})+180^{\circ}$)		1805,0 ... 1880,0 MHz	-10,0	—	10,0	degree
Absolute attenuation	α_{abs}					
		10,0 ... 1000,0 MHz	40,0	50,0	—	dB
		1000,0 ... 1705,0 MHz	26,0	28,0	—	dB
		1705,0 ... 1785,0 MHz	10,0	17,0	—	dB
		1920,0 ... 1980,0 MHz	15,0	24,0	—	dB
		1980,0 ... 2030,0 MHz	24,0	28,0	—	dB
		2030,0 ... 5000,0 MHz	30,0	34,0	—	dB
		5000,0 ... 6000,0 MHz	25,0	30,0	—	dB



Transfer function of filter 2 (Narrow Band)



Transfer function of filter 2 (Wide Band)





SAW Components

B4235

Low-Loss Dual Band Filter for Mobile Communication

942,5/1842,5 MHz

Data Sheet



Published by EPCOS AG

Surface Acoustic Wave Components Division, SAW COM WT PD

P.O. Box 80 17 09, 81617 Munich, GERMANY

© EPCOS AG 2005. Reproduction, publication and dissemination of this brochure and the information contained therein without EPCOS' prior express consent is prohibited.

Purchase orders are subject to the General Conditions for the Supply of Products and Services of the Electrical and Electronics Industry recommended by the ZVEI (German Electrical and Electronic Manufacturers' Association), unless otherwise agreed.

This brochure replaces the previous edition.

For questions on technology, prices and delivery please contact the Sales Offices of EPCOS AG or the international Representatives.

Due to technical requirements components may contain dangerous substances. For information on the type in question please also contact one of our Sales Offices.