

Ver 1.1

# **Radiation-Hardened QUAD DRIVER**

# **Datasheet**

**Part Number: B54LVDS031LVRH**



**北京微电子技术研究所**

## Page of Revise Control

Version No.	Publish Time	Revised Chapter	Revise Introduction	Note
1.0	20171116	---	---	
1.1	20180313	---	change version	

## TABLE OF CONTENTS

1. Features.....	1
2. General Description .....	1
3. Function Block Diagram.....	2
4. Packages and Pin Function Descriptions .....	2
5. Pin List.....	3
6. Detailed Description .....	4
6.1 Function Description.....	4
6.2 Storage Condition .....	4
6.3 Absolute Maximum Ratings .....	5
6.4 Recommended Operation Conditions .....	5
7. Specifications.....	6
8. Package Specifications .....	8
9. Appendix I Typical Application Example.....	10

## 1. Features

- >400 Mbps (200 MHz) switching rates
- +350mV nominal differential signaling with 100Ω load
- 3.3 V power supply
- TTL compatible inputs
- Ultra low power CMOS technology
- Cold spare on all pins
- 3.0ns maximum, propagation delay
- 400ps maximum, differential skew
- Radiation-hardened design:
  - Total-dose: 300 krad(Si)
  - Latchup immune (LET > 75MeV-cm<sup>2</sup>/mg)
- Packaging options:
  - 16-lead flatpack
- Compatible with IEEE 1596.3SCI LVDS
- Compatible with ANSI/TIA/EIA 644-1996 LVDS Standard

## 2. General Description

The B54LVDS031LVRH Quad Driver is a quad CMOS differential line driver designed for applications requiring ultra low power dissipation and high data rates. The device is designed to support data rates in excess of 400 Mbps(200 MHz) utilizing Low Voltage Differential Signaling(LVDS) technology. The B54LVDS031LVRH accepts TTL input levels and translates them to low voltage (340mV) differential output signals. In addition, the driver supports a three-state function that may be used to disable the output stage, disabling the load current, and thus dropping the device to an ultra low idle power state. The B54LVDS031LVRH and companion quad line receiver B54LVDS032LVRH provide new alternatives to high power pseudo-ECL devices for high speed point-to-point interface applications. Quad Driver is a quad CMOS differential line driver designed for applications requiring ultra low power dissipation and high data rates.

### 3. Function Block Diagram

B54LVDS031LVRH function block diagram is shown in figure 3-1.

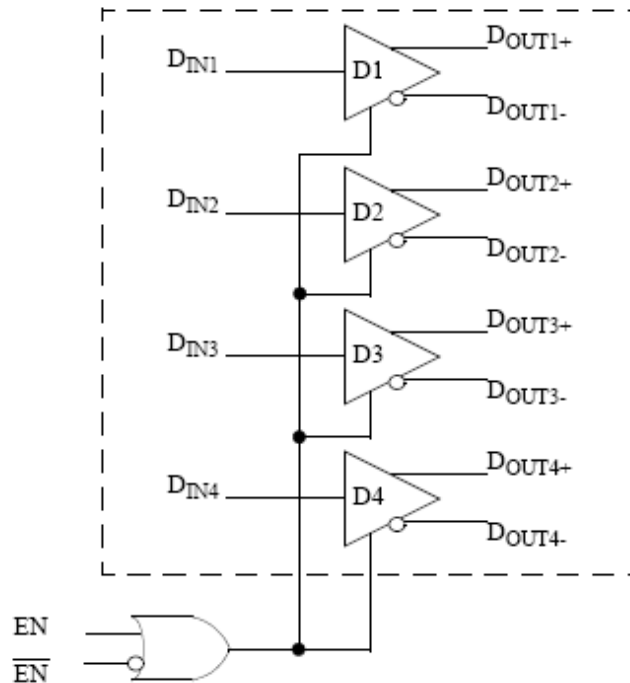


Figure 3-1 B54LVDS031LVRH Quad Driver Block Diagram

### 4. Packages and Pin Function Descriptions

The provided package is: FP16 and DIP16

B54LVDS031LVRH - pin configuration is shown in 4-1.

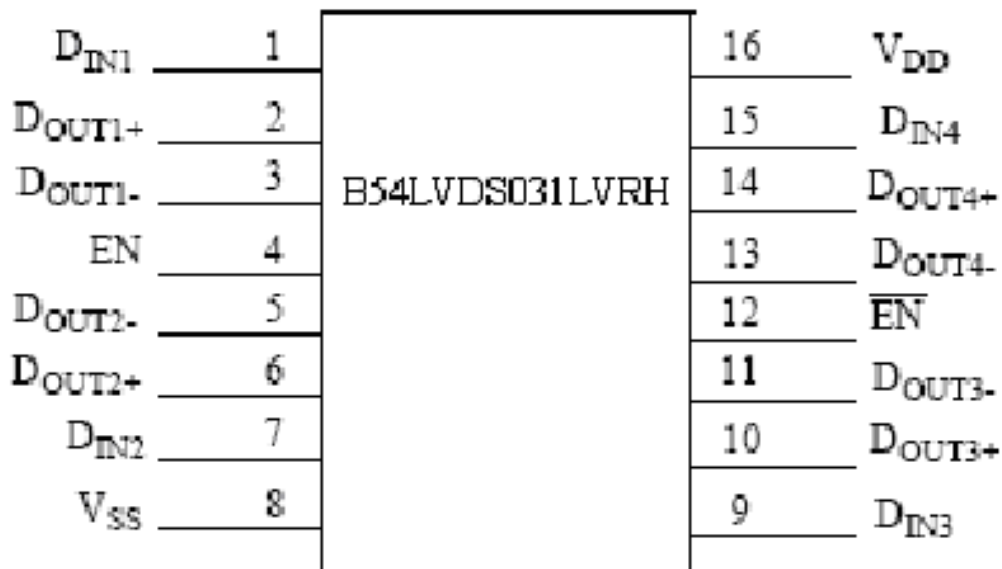


Figure 4-1 B54LVDS031LVRH pin configuration

Table 4-1 B54LVDS031LVRH Pin Function Descriptions

Pin No.	Name	Description
1, 7, 9, 15	$D_{IN}$	Driver input pin, TTL/CMOS compatible
2, 6, 10, 14	$D_{OUT+}$	Non-inverting driver output pin, LVDS levels
3, 5, 11, 13	$D_{OUT-}$	Inverting driver output pin, LVDS levels
4	EN	Active high enable pin, OR-ed with EN
12	$\overline{EN}$	Active low enable pin, OR-ed with EN
16	$V_{DD}$	Power supply pin, +3.3V + 10%
8	$V_{SS}$	Ground pin

## 5. Pin List

B54LVDS031LVRH pin list is shown in table 5-1.

**Table 5-1 B54LVDS031LVRH pin list**

Pin No.	Symbol	Function	Pin No.	Symbol	Function
1	D <sub>IN1</sub>	INPUT DATA1	9	D <sub>IN3</sub>	INPUT DATA3
2	D <sub>OUT1+</sub>	OUTPUT DATA1 POSITIVE	10	D <sub>OUT3+</sub>	OUTPUT DATA3 POSITIVE
3	D <sub>OUT1-</sub>	OUTPUT DATA1 NEGATIVE	11	D <sub>OUT3-</sub>	OUTPUT DATA3 NEGATIVE
4	EN	Active high enable pin	12	$\overline{EN}$	Active low enable pin
5	D <sub>OUT2-</sub>	OUTPUT DATA2 NEGATIVE	13	D <sub>OUT4-</sub>	OUTPUT DATA4 NEGATIVE
6	D <sub>OUT2+</sub>	OUTPUT DATA2 POSITIVE	14	D <sub>OUT4+</sub>	OUTPUT DATA4 POSITIVE
7	D <sub>IN2</sub>	INPUT DATA2	15	D <sub>IN4</sub>	INPUT DATA4
8	V <sub>SS</sub>	GND	16	V <sub>DD</sub>	POWER

## 6. Detailed Description

### 6.1 Function Description

The device is designed to support data rates in excess of 400 Mbps(200 MHz) utilizing Low Voltage Differential Signaling(LVDS) technology. The B54LVDS031LVRH accepts TTL input levels and translates them to low voltage (350mV) differential output signals. In addition, the driver supports a three-state function that may be used to disable the output stage, disabling the load current, and thus dropping the device to an ultra low idle power state. truth table is shown in table 6-1.

Table 6-1 truth table

ENABLE	$\overline{ENABLE}$	Input	Non-inverting Output	Inverting Output
L	H	X	Z	Z
All other combinations of ENABLE inputs		L	L	H
		H	H	L

L = Low logic state

X = Irrelevant

H = High logic state

Z = TRI-STATE (high impedance)

## 6.2 Storage Condition

Packaged product should be stored in the ventilate warehouse with ambient temperature  $10^{\circ}\text{C} \sim 30^{\circ}\text{C}$  and relative humidity less than 70%. There should be no acid, alkali or other radiant gas in the environment,

## 6.3 Absolute Maximum Ratings

- Supply voltage range to ground potential ( $V_{DD}$ ) :  $-0.3\text{V}$  to  $4.0\text{V}$
- DC input voltage range ( $V_{in}$ ) :  $-0.3\text{V}$  to  $(V_{DD}+0.3\text{V})$
- Storage temperature ( $T_{stg}$ ) :  $-65^{\circ}\text{C}$  to  $150^{\circ}\text{C}$
- Lead temperature ( $T_h$ ) :  $260^{\circ}\text{C}$
- Junction temperature (TJ):  $150^{\circ}\text{C}$
- Thermal resistance junction-to-case3 ( $R_{th(J-C)}$ ) :  $20^{\circ}\text{C}/\text{W}$

## 6.4 Recommended Operation Conditions

- Supply voltage relative to ground ( $V_{DD}$ ) :  $3.0\text{V}$  to  $3.6\text{V}$
- Case operation temperature range(TA) :  $-55^{\circ}\text{C}$  to  $125^{\circ}\text{C}$
- DC input voltage ( $V_{in}$ ) :  $0\text{V}$  to  $V_{DD}$



## 7. Specifications

All electrical characteristics are shown in table 7-1, Propagation Delay and Transition Time Waveforms are shown in Figure 7-1, Three-State Delay Waveform is shown in Figure 7-2.

**Table 7-1 B54LVDS031LVRH electrical characteristics**

PARAMETER	SYMBOL	CONDITION ( $-55^{\circ}\text{C} \leq T_A \leq 125^{\circ}\text{C}$ , $V_{DD}=3.3 \times$ ( $1 \pm 10\%$ ) V)	LIMIT		UNIT
			MIN	MAX	
High-level input voltage	$V_{IH}$		2.0	$V_{DD}$	V
Low-level input voltage	$V_{IL}$		GND	0.8	V
High-level output voltage	$V_{OH}$	$R_L=100\Omega$	—	1.65	V
Low-level output voltage	$V_{OL}$	$R_L=100\Omega$	0.925	—	V
Input leakage current	$I_{IN}$	$V_{IN}=V_{DD}$ or $V_{SS}$ , $V_{DD}=5.5\text{V}$	-10	10	$\mu\text{A}$
Cold spare current	$I_{CS}$	$V_{OUT}=3.6\text{V}$ , $V_{DD}=0\text{V}$ ,	-20	20	$\mu\text{A}$
		$V_{IN}=3.6\text{V}$ , $V_{DD}=0\text{V}$ ,	-20	20	
Differential Output Voltage	$V_{OD}$	$R_L=100\Omega$	250	400	mV
Change in Magnitude of VOD for Complementary Output States	$\Delta V_{OD}$	$R_L=100\Omega$	—	35	mV
Offset Voltage	$V_{OS}$	$R_L=100\Omega$ , $V_{OS}=(V_{OL}+V_{OH})/2$	1.125	1.450	V
Change in Magnitude of VOS for Complementary Output States	$\Delta V_{OS}$	$R_L=100\Omega$	—	25	mV
Input clamp voltage	$V_{CL}$	$I_{CL}=-18\text{mA}$	-1.5	—	V
Output Short Circuit Current <sup>a</sup>	$I_{OS}$	$V_{IN}=V_{DD}$ , $V_{OUT+}=0\text{V}$ 或 $V_{IN}=0\text{V}$ , $V_{OUT-}=0\text{V}$	-9.0	—	mA
Output Three-State Current	$I_{OZ}$	$V_{DD}=5.5\text{V}$ , $\overline{EN}=0\text{V}$ , $\overline{EN}=5.5\text{V}$ , $V_{OUT-}=0\text{V}$ or $V_{DD}$	-10	10	$\mu\text{A}$
Loaded supply current drivers enabled	$I_{CCL}$	$R_L=100\Omega$ all channels $V_{IN}=V_{DD}$ or $V_{SS}$ (all inputs)	—	18.0	mA
Loaded supply current drivers disabled	$I_{CCZ}$	$\overline{EN}=0\text{V}$ , $\overline{EN}=V_{DD}$ , $V_{IN}=V_{DD}$ or $0\text{V}$	—	3.0	mA
Function test		$f=200\text{MHz}$			
Differential Propagation Delay High to Low	$t_{PHLD}$	Figure 7-1	—	3.0	ns
Differential Propagation Delay Low to High	$t_{PLHD}$	Figure 7-1	—	3.0	ns

Differential Skew (tPHLD - tPLHD)	$t_{SKD}$	$t_{PLHD} - t_{PHLD}$	—	0.4	ns
Channel-to-Channel Skew <sup>b</sup>	$t_{SK1}$		—	0.5	ns
Chip-to-Chip Skew <sup>c</sup>	$t_{SK2}$		—	2.7	ns
Disable Time High to Z	$t_{PHZ}$	Figure 7-2	—	5.0	ns
Disable Time Low to Z	$t_{PLZ}$	Figure 7-2	—	5.0	ns
Enable Time Z to High	$t_{PZH}$	Figure 7-2	—	7.0	ns
Enable Time Z to Low	$t_{PZL}$	Figure 7-2	—	7.0	ns

Notes:

- 1、 Devices are tested @ VDD = 3.0V&3.6V.
- 2、 Current into device pins is defined as positive. Current out of device pins is defined as negative. All voltages are referenced to ground except differential voltages.
- 3、 Generator waveform for all tests unless otherwise specified: f = 1 MHz, ZO = 50Ω, tr < 1 ns, and tf < 1 ns.

<sup>a</sup> Output short circuit current (I<sub>OS</sub>) is specified as magnitude only, minus sign indicates direction only.

<sup>b</sup> Channel-to-Channel Skew is defined as the difference between the propagation delay of the channel and the other channels in the same chip with an event on the inputs.

<sup>c</sup> Chip to Chip Skew is defined as the difference between the minimum and maximum specified differential propagation delays.

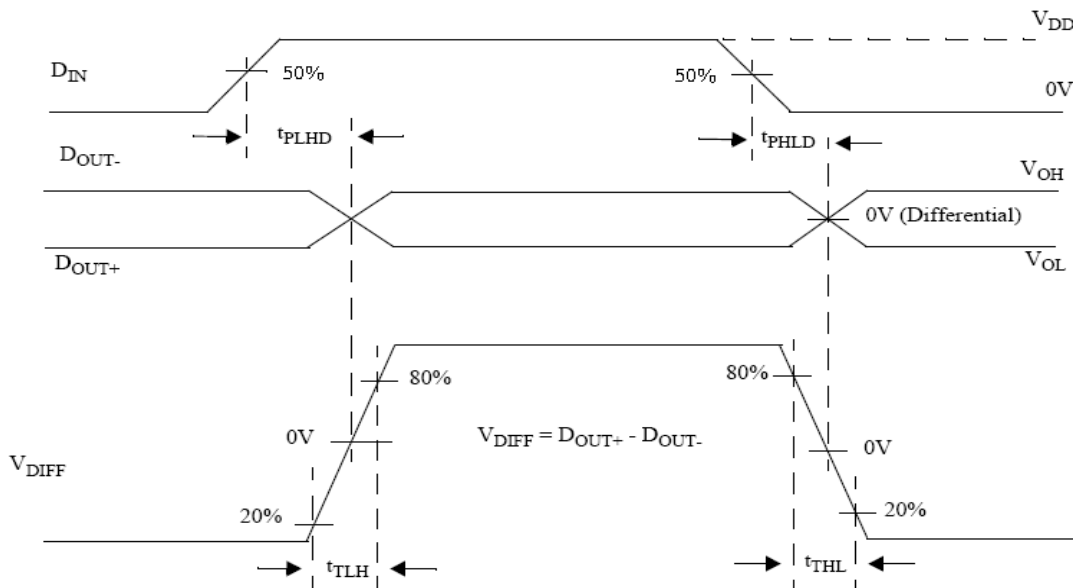


Figure.7-1. Driver Propagation Delay and Transition Time Waveforms

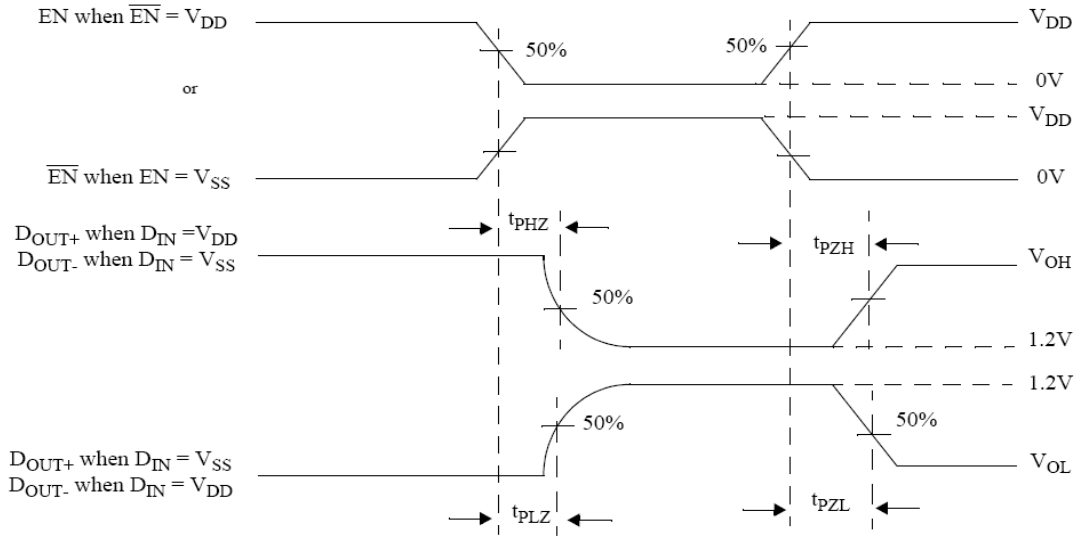


Figure.7-2. Driver Three-State Delay Waveform

## 8. Package Specifications

The specifications of FP16 package are shown in figure8-1.

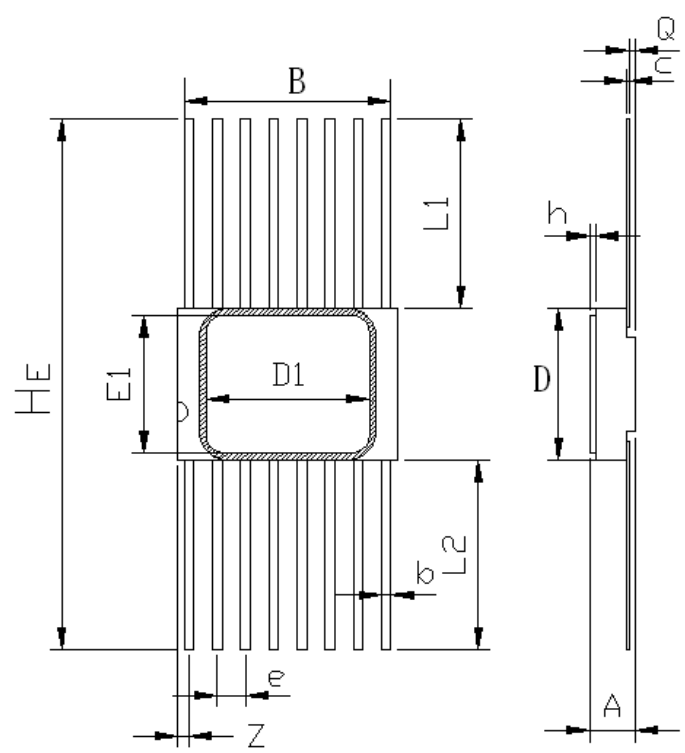


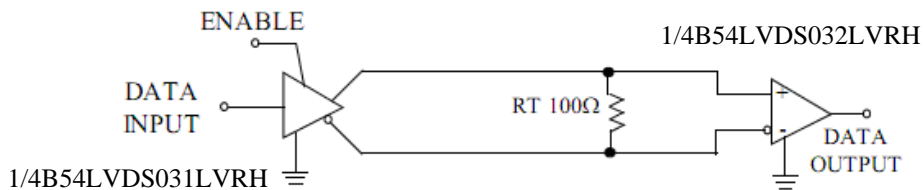
Figure 8-1 FP16 package specifications

Table 8-1 size symbol list

Symbol	Value (unit: mm)		
	Min	Normal	Max
A	1.60	—	2.50
B	8.94	—	9.69
b	0.25	—	0.54
c	0.07	—	0.20
D	6.55	—	7.25
e	—	1.27	—
He	18.76	19.41	20.06
Q	0.13	—	0.90
L1	5.75	—	6.75
L2	5.75	—	6.75
Z	—	—	1.27
D1	—	7.366	—
E1	—	6.223	—
h	0.22	—	0.28

## 9. Appendix I Typical Application Example

The B54LVDS031LVRH driver's intended use is primarily in an uncomplicated point-to-point configuration where ground differences are less than 1V as is shown in Appendix figure.1-1. This configuration provides a clean signaling environment for quick edge rates of the drivers. The receiver is connected to the driver through a balanced media such as a standard twisted pair cable, a parallel pair cable, or simply PCB traces. Typically, the characteristic impedance of the media is in the range of 100Ω. A termination resistor of 100Ω should be selected to match the media and is located as close to the receiver input pins as possible. The termination resistor converts the current sourced by the driver into voltages that are detected by the receiver. Other configurations are possible such as a multireceiver configuration, but the effects of a mid-stream connector(s), cable stub(s), and other impedance discontinuities, as well as ground shifting, noise margin limits, and total termination loading must be taken into account.



Appendix figure.1-1. Point-to-Point Application

The B54LVDS031LVRH differential line driver is a balanced current source design. A current mode driver, has a high output impedance and supplies a constant current for a range of loads (a voltage mode driver on the other hand supplies a constant voltage for a range of loads). Current is switched through the load in one direction to produce a logic state and in the other direction to produce the other logic state. The current mode requires (as discussed above) that a resistive termination be employed to terminate the signal and to complete the loop as shown in Appendix figure.1-1. AC or unterminated configurations are not allowed. The 3.5mA loop current will develop a differential voltage of 350mV across the 100Ω termination resistor which the receiver detects with a 250mV minimum differential noise margin neglecting resistive line losses (driven signal minus receiver threshold (350mV -

100mV = 250mV)). The signal is centered around +1.125V (Driver Offset, VOS) with respect to ground.

## 10. Appendix II Replaced Product

**Appendix table.1-1**

Device Type	Substituted Device Type
B54LVDS031LVRH	Aeroflex UT54LVDS031LV

## Service and Support:

Address: No.2 Siyingmen N. Road. Donggaodi. Fengtai District.Beijing.China.

Department: Department of international cooperation

Telephone: +86(0)10-67968115-6751

Email: [gjhz@mxtronics.com](mailto:gjhz@mxtronics.com)

Fax: +86(0)10-68757706

Zip code: 100076